

King County Solid Waste News

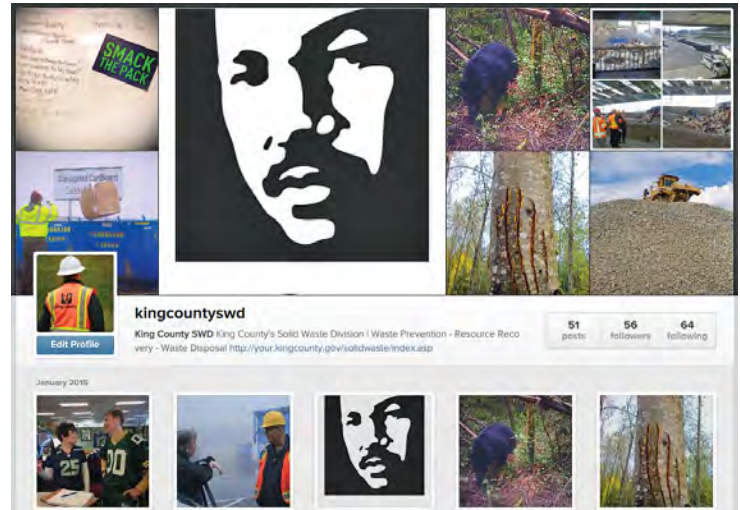
February 2015

Photogenic Trash

Every day, tons and tons of solid waste are brought to transfer stations and the landfill to be recycled and disposed. It's fascinating work, but the public rarely gets to see what waste prevention, resource recovery, and waste disposal looks like first-hand. That's why we decided to expand our social media presence to include Instagram – a social media channel that allows people to share photographs and videos with followers and the public.

Since the account went live in December, the division has posted more than 50 pictures and videos featuring events, facilities, capital improvement projects, and some of our more wild neighbors at the Cedar Hills Regional Landfill. Some cities have already begun following along, and we're hoping others do as well so they can see firsthand what day-to-day operations at the division look like.

The division's Instagram handle is @kingcountyswd, and links to the division's Instagram and other social media accounts are available on its website: your.kingcounty.gov/solidwaste/programs/social-media.asp



Capital Projects Update

Factoria Replacement Remains on Schedule

Work is proceeding on schedule to replace the 50-year-old Factoria Transfer Station in Bellevue with a larger, more efficient facility that will offer numerous recycling opportunities and benefits to customers and the environment. In early January, a second neighbor newsletter, written in multiple languages, was mailed to approximately 5,100 residents and businesses surrounding the station. The project website, <http://your.kingcounty.gov/solidwaste/facilities/factoria-replacement-project.asp>, has also been updated to include the second newsletter and construction photos. Construction is expected to last until December 2017, and the new facility will be built in the same general areas as the existing transfer station. The current station will remain open throughout the entire construction process.

Recycling Mercury-Containing Light Bulbs and Tubes Gets Easier

Safely recycling compact fluorescent lights (CFLs), fluorescent tubes, and other light bulbs that contain toxic mercury is about to get a lot easier at several King County solid waste recycling and transfer stations.

Thanks to a new statewide product stewardship law that resulted in the LightRecycle Washington program, mercury-containing light bulbs and tubes are now accepted at no charge at the Bow Lake, Enumclaw, and Vashon recycling and transfer stations.

The mercury-containing light bulb and tube recycling collection service at King County's Shoreline Recycling and Transfer Station has been changed from a paid drop-off service to a no-charge service.



The household hazardous waste facility at the County's Factoria Transfer Station will continue to accept CFLs, fluorescent tubes, and other mercury-containing lights at no charge.

There is a limit of 10 bulbs/tubes per person, per day at King County facilities and at all other LightRecycle Washington collection locations.

The product stewardship law requires lighting manufacturers to create a statewide program for collecting and recycling mercury-containing lights. The program is funded through an environmental handling charge that is added to the retail price of lights containing mercury.

More information about the new program can be found at www.lightrecyclewa.org.



Lighting the Way to Efficiency and Cost Savings

Over the past few months, two phases of lighting retrofit work at the Cedar Hills Regional Landfill have been taking place. The result is a significant reduction in energy use, while improving light quality. The new lights are a mixture of super high efficiency LEDs and long-life efficient fluorescent lamps, which will reduce maintenance for a number of years. Over the next few months, most of the outdoor and miscellaneous trailer lighting will be replaced or retrofitted at the landfill.

In 2015, lighting retrofits will also be coming to a number of other recycling and transfer stations, including Algona, Enumclaw, Houghton, Renton, Shoreline, and Vashon. Beyond the environmental benefit of these projects, they are also a good financial investment – paying for themselves through the savings in just a few years. In addition to the deep energy savings we are beginning to capture at our transfer stations, the county is also working behind the scenes to ensure our office computers are running more energy efficiently, thereby reducing energy use for those working at King Street Center.

Upcoming Meetings

For upcoming meetings, follow these links:

- Metropolitan Solid Waste Management Advisory Committee (MSWMAC): your.kingcounty.gov/solidwaste/about/mswmac.asp
- Solid Waste Advisory Committee (SWAC): your.kingcounty.gov/solidwaste/about/swac.asp



Comprehensive Solid Waste Management Plan Update

The Comprehensive Solid Waste Management Plan is the guiding policy document for the regional solid waste system. The plan presents proposed strategies for managing King County's solid waste over the next six years, with consideration for the next 20 years.

In December, the division asked its two advisory committees to devote time at every meeting to discuss what is needed to reach a 70 percent recycling rate by 2030. Achieving this recycling rate is a high priority for King County and a major component of the overall plan.

The 2013 draft plan is available on the division's website: your.kingcounty.gov/solidwaste/about/Planning/documents/2013-swd-comp-plan.pdf

The previously adopted 2001 Comprehensive Solid Waste Management can be found here: your.kingcounty.gov/solidwaste/about/planning/documents/Comp_Plan_table-of-contents.pdf

Transfer and Waste Management Plan

In 2013, the King County Council adopted an ordinance directing the division to review the adopted 2006 Solid Waste Transfer and Waste Management Plan and determine if changes could be made to the transfer system plan. The review is considering demand management strategies to address operational, policy, and capital improvements in Northeast King County. Traffic studies, customer surveys, and other data are being assessed to help the division plan appropriately for the future.

The division is currently in Phase 2 of the review process. On February 12, a second workshop was held at the Bellevue Community Center. A draft report is due to the King County Council on March 31, 2015. The final report is due June 30, 2015.

For more information, visit the project website: your.kingcounty.gov/solidwaste/about/plan-review.asp

Cedar Hills Landfill Tours

Tours of the landfill can be arranged by contacting the landfill administrative office at 206-263-1000, Monday through Friday from 8 a.m. to 5 p.m. Requests can also be submitted online. Tours are generally held from 8 a.m. to 3 p.m. in a division vehicle that can accommodate up to nine people.

