

King County Solid Waste News

March 2016

2015 By the Numbers

Recycling

2015 was a banner year for recycling at Solid Waste Division transfer facilities.

A total of 18,174 tons were recycled in 2015 - an increase of 33 percent over last year. The division's two newest recycling and transfer stations, Shoreline and Bow Lake, accounted for 75 percent of the materials collected at all division transfer stations.

Yard waste remains the largest category of materials recycled (48 percent), followed by scrap metal, clean wood, and cardboard.

The Resource Recovery Program, which seeks to enhance recycling by directing customers, providing additional recycling containers and signage for self-haulers, and floor sorting, showed its importance with a total of 1,160 additional tons of cardboard, scrap metal, and clean wood collected and recycled. In 2015, the King County Council approved additional staffing for permanent Resource Recovery at the Bow Lake, Shoreline, and Enumclaw recycling and transfer stations in 2016.

Installation of new cardboard and comingled recycling compactors at the Shoreline, Enumclaw, Renton, Houghton, and Vashon stations helped to lower transportation costs by \$128,427 and reduced greenhouse gas emissions despite an increase in the amount of tons recycled.

Participating in the state-sponsored LightRecycle program helped King County residents recycle more than 15,000 pounds of mercury-containing bulbs and tubes at King County transfer stations.

Only three months into its year-long pilot program, the new yard and food waste disposal service at Vashon saw 426 customers turn 106.29 tons of yard and food waste into nutrient-rich compost.

Tonnage

In addition to increased recycling levels, total tonnage also increased in 2015.

Compared to 2014, total tonnage grew by 2.8 percent, about 24,500 tons, to 880,703 total tons of garbage and yard waste disposed at our transfer stations and the Cedar Hills Regional Landfill in 2015.



Tonnage levels increased in 2015 by 2.8 percent compared to 2014.



Division staff at the Shoreline Recycling and Transfer Station sort cardboard as part of resource recovery.

Landfill Gas Recovery

The Solid Waste Division designs landfill cells to capture landfill gas created from decomposing garbage and transport it for processing into clean, renewable energy. BioEnergy Washington (BEW), which contracts with the division to process landfill gas into pipeline-quality Renewable Natural Gas (RNG) for sale to Puget Sound Energy, continues to purify significant volumes of landfill gas into usable methane. In 2015, the division provided saleable RNG worth approximately \$1.3 million to BEW. The gas is being sold as RNG for transportation uses in the California market. The RNG produced at the BEW facility in 2015 displaced the equivalent of 11,459,783 gallons of diesel fuel.



Landfill gas is collected and transported via pipeline to the onsite BEW plant.

Landfill 50th Celebration

For the past 50 years the Cedar Hills Regional Landfill in Maple Valley has served as King County's primary disposal location.

To celebrate the life of the landfill and the services it has provided, the King County Solid Waste Division will hold an event on Saturday, April 23 from 10 to 11:30 a.m.

This commemorative event will give the public a chance to tour the landfill and experience our operations first-hand. Guests will also get to know landfill heavy equipment and see how the Solid Waste Division continues to be a national leader in waste prevention, resource recovery, and waste disposal.

In addition to the tour, Deputy County Executive Fred Jarrett and other county leaders will speak about the importance of the landfill to our region, our residents, and our efforts to combat climate change.

Reservations for the event are required and must be made by April 17. This is a great learning opportunity for the whole family – children ages 5 and over are welcome to join if accompanied by an adult. Space is limited to 108 people.

Parking will be provided at the landfill and participants will board a King County Metro buses for the guided tour. The buses are wheelchair accessible. To ensure safety, tour participants must wear closed-toe footwear and follow instructions from employees.

To RSVP or to request accommodations or an interpreter, contact Solid Waste Division Communications Specialist Anna Kegel, 206-477-1693 or Anna.Kegel@kingcounty.gov.



Equity and Social Justice in the Solid Waste Division

In September 2014, King County Executive Dow Constantine signed an Executive Order calling for the development of the first Equity and Social Justice (ESJ) Strategic Plan for King County.

Guiding the county's ESJ efforts are Ordinance 16948, which directs all county departments and divisions to "consider equity and social justice impacts in all decision-making so that decisions increase fairness and opportunity for all people, particularly people of color, low-income communities, and people with limited English proficiency.

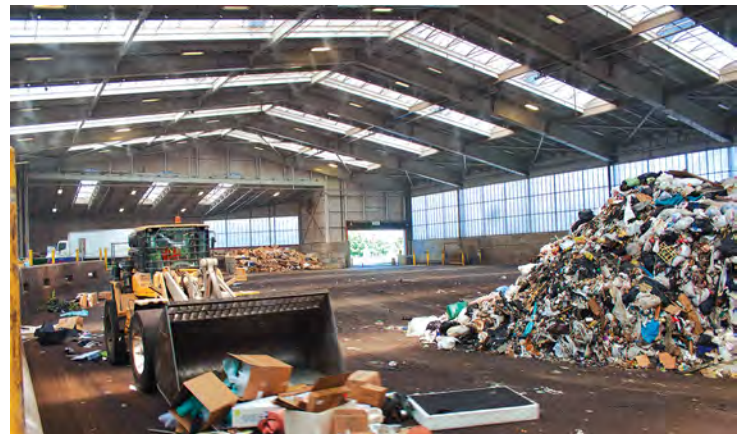
Though it is complex, at its core ESJ means everyone has the opportunity to be successful regardless of their station in life.

Both internally and externally, the Solid Waste Division has many ESJ-related programs that seek to provide fairness for the community and residents, as well as for our customers, stakeholders, and employees.

Our newest ESJ-focused program is "Destination: Zero Waste." Created by our External ESJ Committee, this program will bring underrepresented school children to tour the Bow Lake Recycling and Transfer Station to learn about our operations, see our award-winning facility, understand where their waste goes, and be introduced to future career opportunities with King County.

To make our division as inclusive as possible, we specifically sought out school districts that have student populations who live in poverty, have limited English skills, and who are people of color. To reduce the financial burden to schools the division will transport the students to the facility via King County Metro Buses for free.

The first tour is scheduled for the end of May.



The division's newest ESJ-related program is Destination: Zero Waste, which will provide free tours of the Bow Lake Recycling and Transfer Station to underrepresented school children.

Upcoming Meetings

For information about upcoming meetings, follow these links:

- Metropolitan Solid Waste Management Advisory Committee (MSWMAC): your.kingcounty.gov/solidwaste/about/mswmac.asp
- Solid Waste Advisory Committee (SWAC): your.kingcounty.gov/solidwaste/about/swac.asp
- Cedar Hills Regional Landfill Community Meeting: Twice a year the division holds a landfill community meeting to give residents and neighbors updates on the landfill and its operations. The next meeting will be on April 13, 2016, from 7 to 9 p.m. at the King County Library Service Center in Issaquah. More information about these meetings can be found here: your.kingcounty.gov/solidwaste/facilities/cedar-hills-meetings.asp

