



Traffic and Service Time Study

Transfer Plan Advisory Committee

September, 26 2014



King County

Department of
Natural Resources and Parks
Solid Waste Division

Waste
Prevention

Resource
Recovery

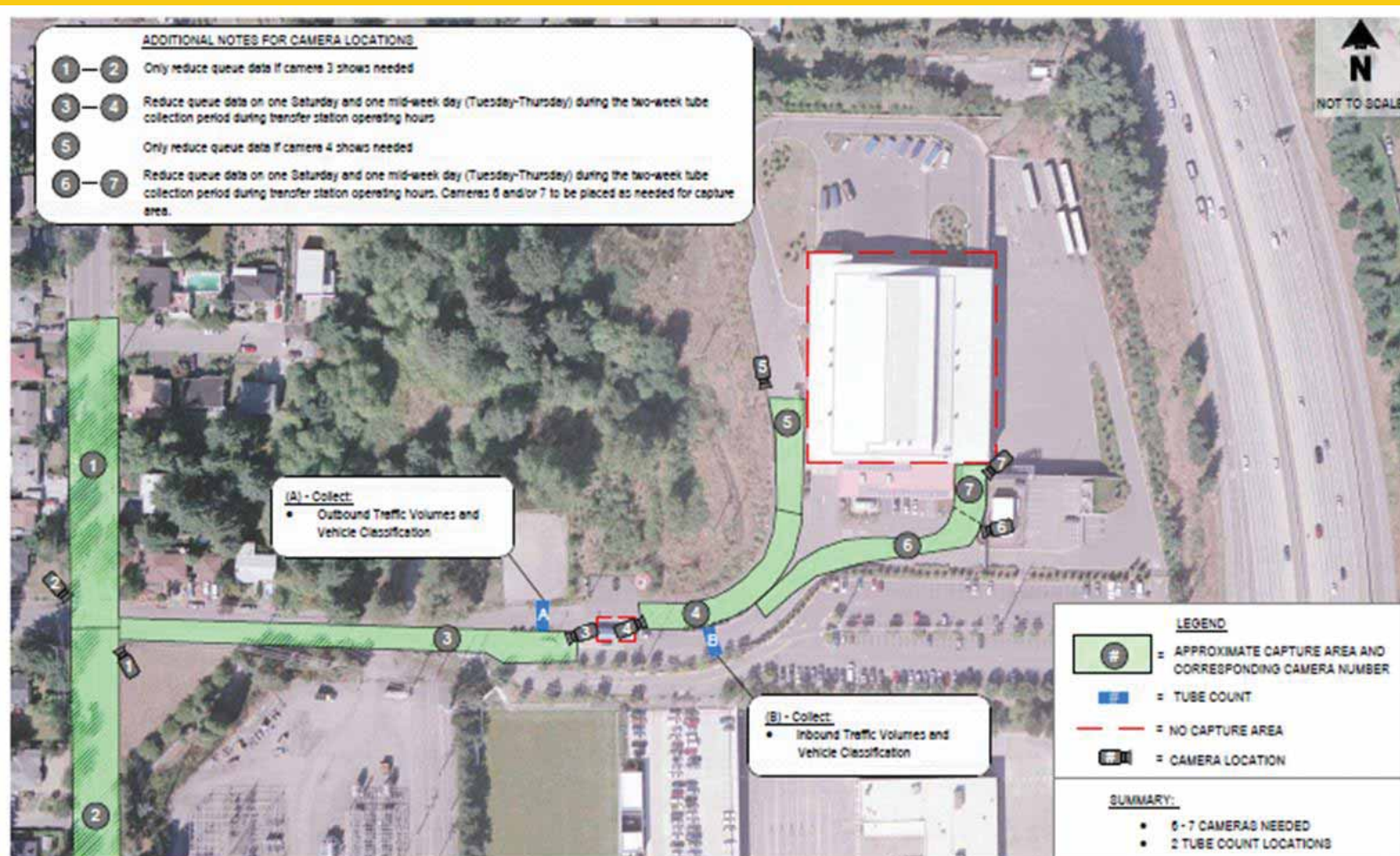
Waste
Disposal

Study Partners

- SWD is working with Transpo Group and URS to perform traffic studies and customer questionnaires
 - On-site work throughout September
 - Initial analysis in October

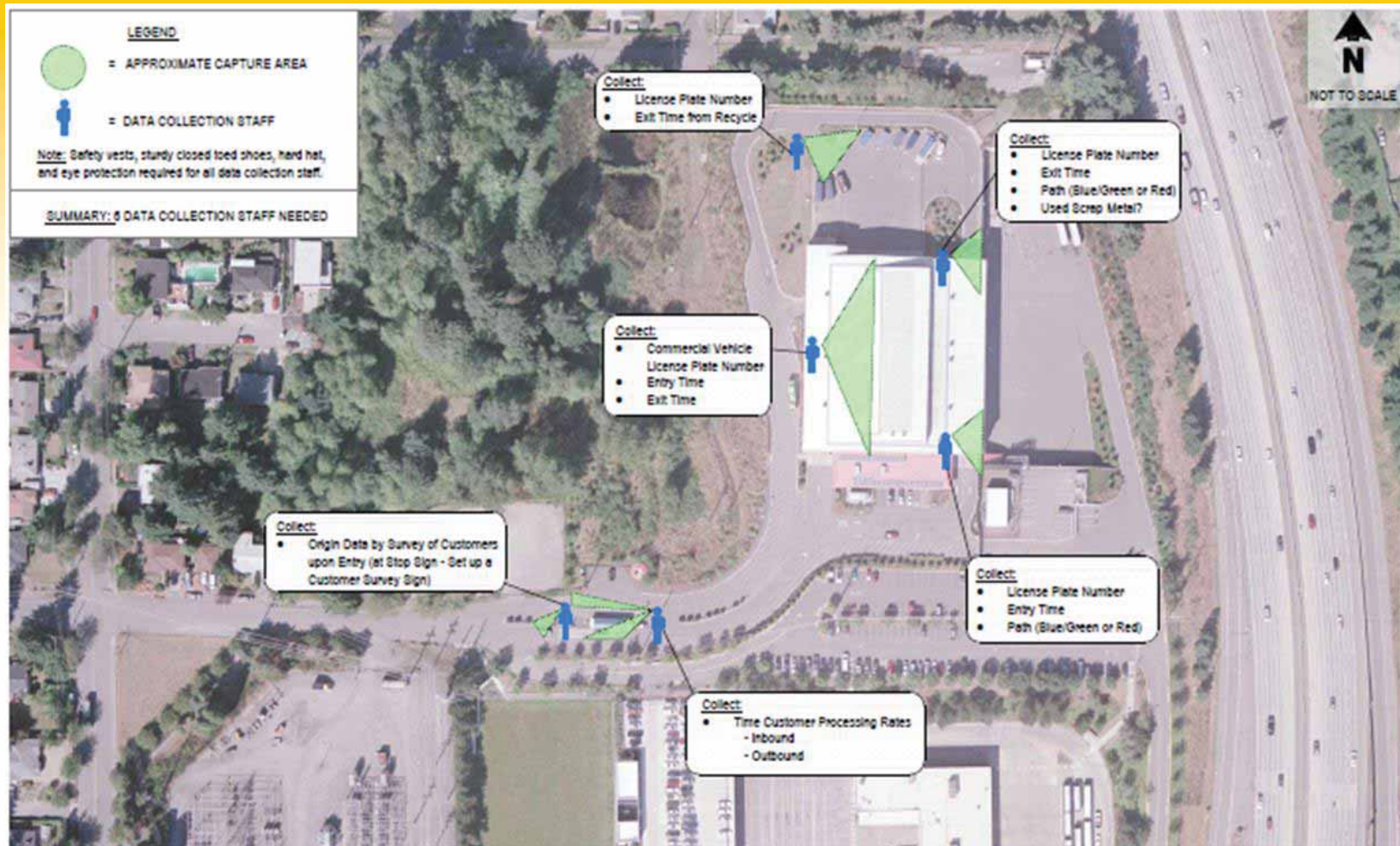
Data Elements

- Site access volumes
- Site ingress/egress queuing
- Internal queuing
- Internal trip patterns
- Vehicle duration/travel time onsite
- Customer type and trip origin
- Offsite traffic movement



Shoreline Data Collection Plan - Camera / Tubes

EXHIBIT



Shoreline Data Collection Plan - Manual

EXHIBIT

Results

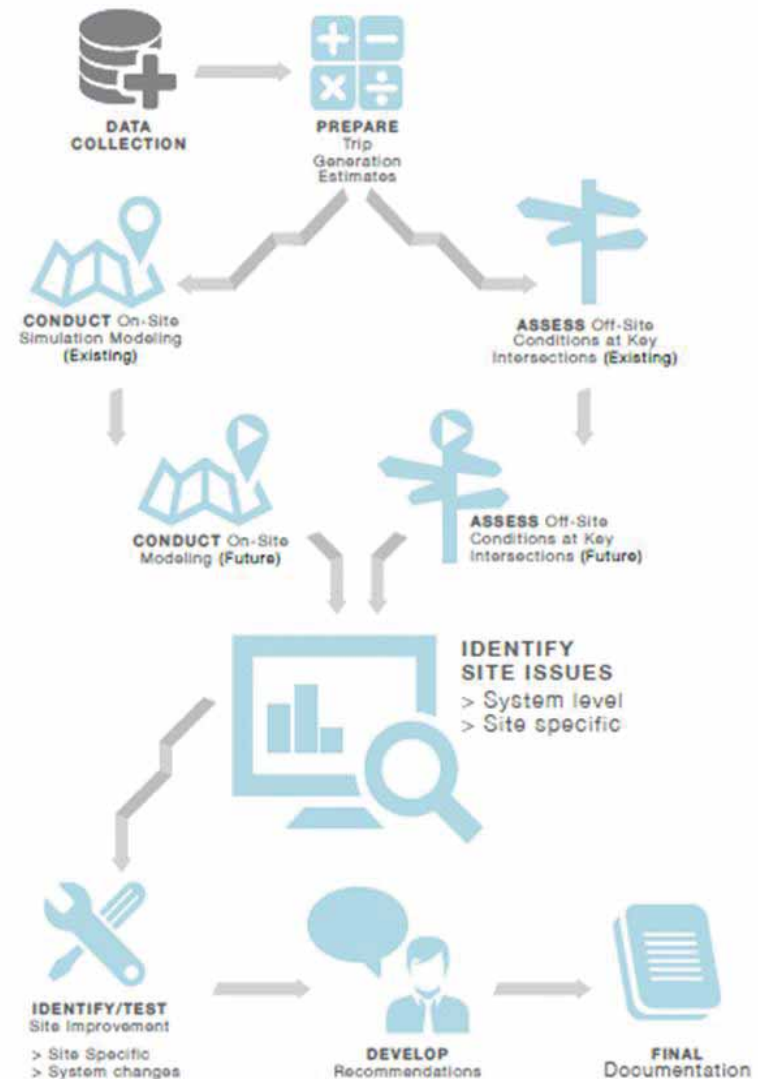
- Wait time by site
- Time in station
- Internal bottlenecks
- Customer origins
- Local traffic impacts
- Greenhouse gas impacts

Analysis

- Results will indicate areas where changes may increase capacity
- Results will identify in what circumstances a site would exceed capacity
- Results will identify potential neighborhood impacts

Traffic Study Process

- Model base concept for worst case year for each site
- Add strategies, e.g., direct commercial, to model
- Assess outcomes for individual sites and system
- Apply model when significant differences are identified – do not model every potential variation or every year





King Street Center
201 South Jackson Street, Suite 701
Seattle, WA 98104-3855
206-477-4466
711 TTY Relay
www.kingcounty.gov/solidwaste