

# *Design Advisory Group Meeting #2*

*February 28, 2019*



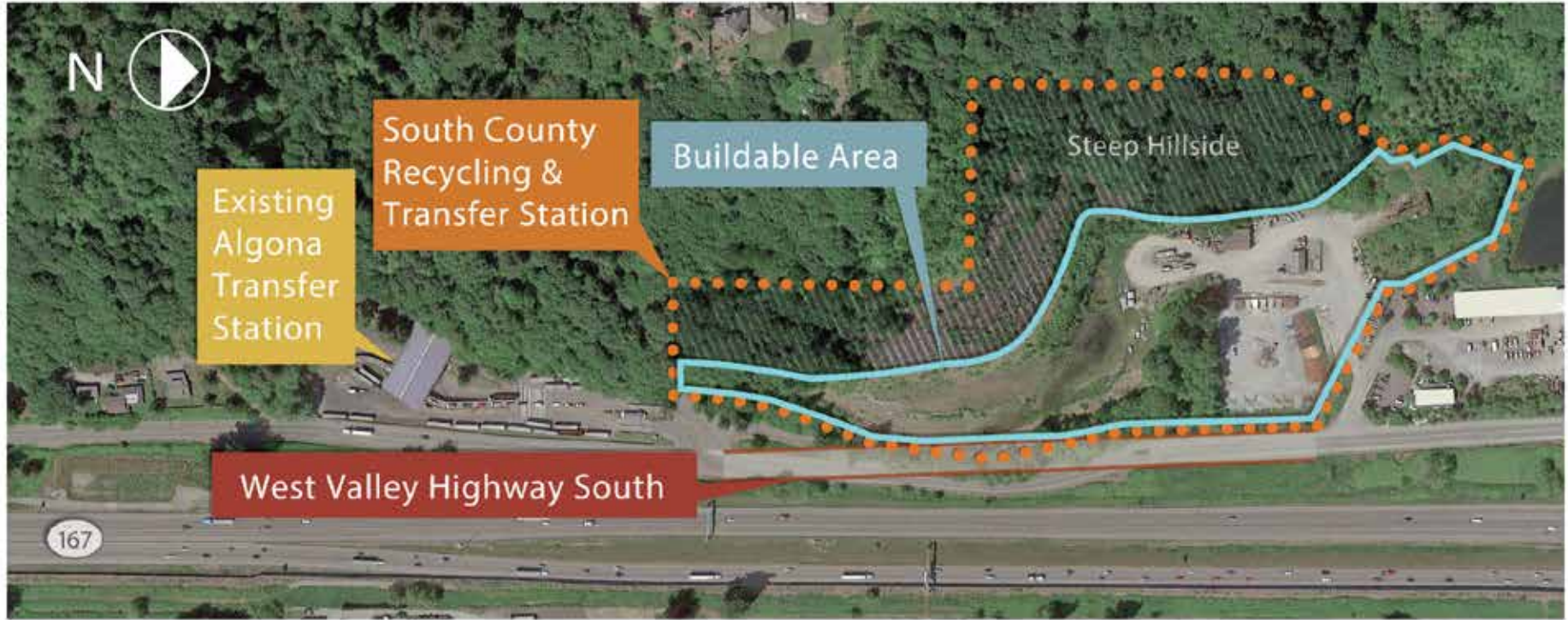
**South County Recycling and Transfer Station**

# Welcome and Introductions

# Design Advisory Group Charter Review

- Roles and Responsibilities
- Commitment
- Expectations and Ground Rules
- Member Criteria

# Design Advisory Group Project Key Messages





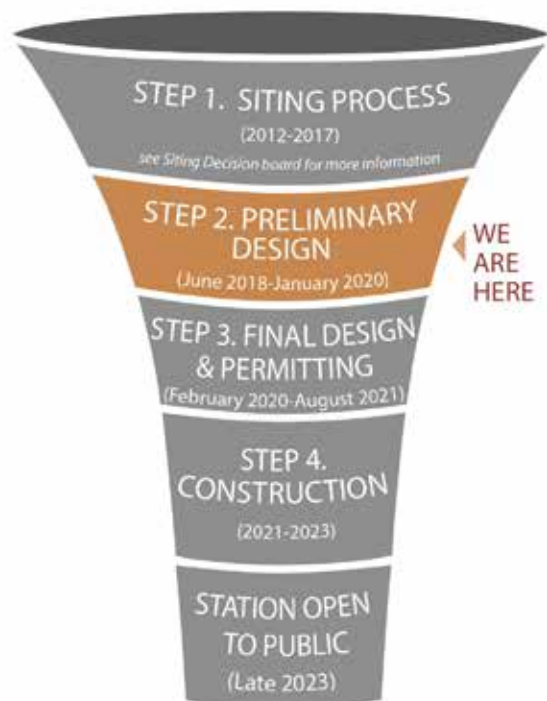
# Public Open House Input

- Operations –
  - Differences between current station and new station design
  - Concerned construction impacts
  - Concerned about slope stability, traffic, noise and odor and interested in details about controls and data
  - Want facility to be invisible in terms of impacts (they smell it, hear it, or feel it)
- Aesthetic Goals – “complement Algona City Hall” and “industrial/commercial fits with Algona”
- Conceptual Layouts –concerned with traffic, generally preferred Concept 1 flow
- Community Benefits – involve public in art decision making, consider a community room, screen facility with trees

## Public Open House on December 12<sup>th</sup> at Algona City Hall







## STEP 2. PRELIMINARY DESIGN

### Employee Engagement

### Community Engagement

- Design Advisory Group
- Open House Meetings
- Presentations to community groups, neighbors, and others
- Online Open House

### Environmental Assessments

### Green Building and Sustainable Design Features

### To Achieve Better Outcomes, King County Integrates and Implements Pro-Equity and Social Justice Practices, Including:

- Leadership, operations, and services
- Plans, policies, and budgets
- Workplace and workforce
- Community partnerships
- Communication and education
- Facility and system improvements

### Evaluate Technologies to Improve Efficiency of Waste Handling

### Community engagement will be used throughout the design process:

- Open houses will be held to gather community input for conceptual design
- King County is seeking members for a Design Advisory Group including residents, business owners, waste haulers, city leaders, and community-based organizations to influence transfer station design
- King County staff are available to meet with community groups, neighbors, and others to discuss the project
- Online public comment opportunities allow people who cannot attend meetings to provide their input



# Preliminary Project Design Requirements

Factoria Recycling & Transfer Station



## PROJECT DESIGN REQUIREMENTS:

- Enclosed solid waste transfer and processing building
- Garbage compactors
- Recycling collection and sorting area
- Employee facilities
- Equipment fueling station
- Scales and scale house
- Household hazardous waste disposal service
- West Valley Highway South road improvements
- Public art
- Green building certification
- Stormwater management
- Stream restoration and enhancements

Recyclable materials sorting at  
Factoria Recycling & Transfer Station



Thornton Creek Improvements at  
Shoreline Recycling & Transfer Station



Scales and scale house at Bow Lake  
Recycling & Transfer Station



South County Recycling and Transfer Station



# Common and Distinct Design Features

Place your dot  
beside the layout  
you like the best



## COMMON ELEMENTS IN ALL CONCEPTS

- All customers enter at south end of site
- Customers can loop back through site to drop off various materials
- Administration Building and Staff Facilities have central location to Transfer Station
- Truck and trailer parking at the north side of the site
- Truck maintenance bays are in Transfer Station lower level
- Stream is routed south

### CONCEPT 1

- Collection trucks split from public after entry
- Tipping floor is grade-separated (includes a wall to lift and dump waste over)
- Public recycling area faces west
- Transfer truck circulation is on the east side of the site
- Household hazardous waste disposal service, Administration Building, and Staff Facilities have separate lane after scale house



### CONCEPT 2

- Collection trucks and transfer trucks exit to south
- Tipping floor is one large, flat area
- Public recycling area faces south








### CONCEPT 3

- Transfer trucks access at north end of site
- Tipping floor is grade-separated (includes a wall to lift and dump waste over)
- Public recycling area faces southwest
- Household hazardous waste disposal service, Administration Building, and Staff Facilities have separate site entry
- Layout utilizes more buildable site area than other concepts



## Aesthetic Goals - *What do you think?*

**Which do you like best?** Place your dot beside the station you like best.

<p>1</p>  <p>Bow Lake Recycling &amp; Transfer Station</p>	
<p>2</p>  <p>Factoria Recycling &amp; Transfer Station</p>	
<p>3</p>  <p>Seattle North Transfer Station</p>	
<p>4</p>  <p>Seattle South Transfer Station</p>	
<p>5</p>  <p>Tacoma Recovery &amp; Transfer Station</p>	



King County will design new facility to minimize noise, dust, and odor emissions.

Features include:

- **Enclosed transfer station** dampens noise and minimizes odor and dust
- **Misting systems** capture dust and suppress odors
- **Capacity to load compacted waste into trailers** removes waste from the tipping floor, removing odor and unsanitary conditions
- Potential **roll-up doors** that close quickly and quietly



*Let us know your thoughts*



Children touring Bow Lake Recycling & Transfer Station



Tipping floor observation room at  
Seattle North Transfer Station



Still Spinning artwork at Factoria Recycling & Transfer Station



## Principles of equity and social justice are a priority for how we site, design, and build a transfer station

Community benefits of the recycling transfer station include the following:

- **New recycling and household hazardous waste disposal services** for South King County
- **Re-aligning West Valley Highway** sightlines and safety
- **New sidewalks** along the highway
- Stream **enhancements and restoration**
- **Stormwater management**
- **Preservation** of wooded slope on west side of the site
- Enhanced **building and grounds aesthetics**
- Potential for a **community meeting space**
- **Education** and tour opportunities
- **Apprentice programs and small supplier construction** initiatives
- **Public art**

 Let us know  
your thoughts...

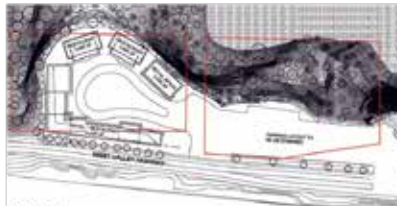
**SITE IMPROVEMENTS**

**ART**

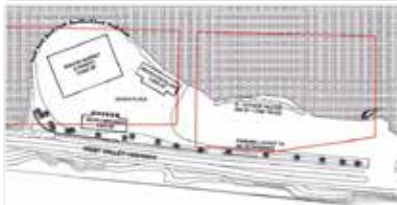
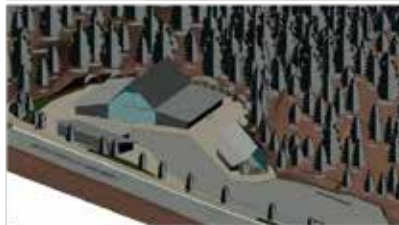
**BUILDINGS**

# Existing Algona Transfer Station Property - *What do you want there?*

The existing Algona Transfer Station will be demolished when the new South County Recycling & Transfer Station opens. **King County will deed the existing transfer station property to City of Algona.** Below are some options for the property.



Option A



Option B

## Option A:

- Buildings arranged around perimeter
- Food destination

## Option B:

- Large centrally-located building
- Smaller buildings around central building

## COMMERCIAL SPACE IDEAS

- Wine Tasting Room
- Micro-Brewery/Bar
- Micro Distillery
- Interior Farmer's Market
- Artisan shops on perimeter

## OPTION A

## OPTION B

## OTHER IDEAS?

*Break*



# Key Design Elements

- Designed for 2043 waste projections and traffic flow
- King County Sustainability goal – Living Building Challenge Energy Petal Certification
- Addition of recycling opportunities not currently provided in Algonia



*Factoria Recycling & Transfer Station*

# Preferred Site Layout and Traffic Flow



# Living Building Challenge

- Place Petal
  - Reduce Site Impacts
  - Restore Site
  - Protect Habitat
  - Alternative Transportation
  - Urban Agriculture
- Energy Petal
  - Passive Design
  - Operational Energy Reductions
  - Renewable Energy Goals
- Beauty Petal
  - Meaningfully integrate public art
  - Contain design features intended solely for human delight
  - Provide interpretive and educational features for visitors



Photos: PXHERE copyright free (top)  
Seattle Daily Journal of Commerce (bottom)



# Project Updates

- Online Open House input summary to date
- Community engagement
- Site entrances and exits
- Field work
  - Tree survey
  - Geotechnical drilling
  - Cultural resources
  - Noise study
- Beginning site and building design
- Public art coordination with 4Culture on artist selection

# Design Advisory Group Schedule

- DAG Meeting #2
  - February 28, 2019 6:00-8:00 PM
  - Preliminary Design: Site concept review, public engagement and outreach update
- DAG Meeting #3
  - May 2019 6:00-8:00 PM
  - Draft Design: Site plan review, public engagement and outreach update
- DAG Meeting #4
  - September 2019 6:00-8:00 PM
  - Updated Design: Site plan review, public engagement and outreach update
- DAG Final Meeting
  - December 2019 6:00-8:00 PM
  - Final Design: Schedule if needed

**Meetings to be held at Algona City Hall  
200 Washington Boulevard, Algona, WA 98001**



*Photo from Seattle Daily Journal of Commerce Website*

***ADJOURN***