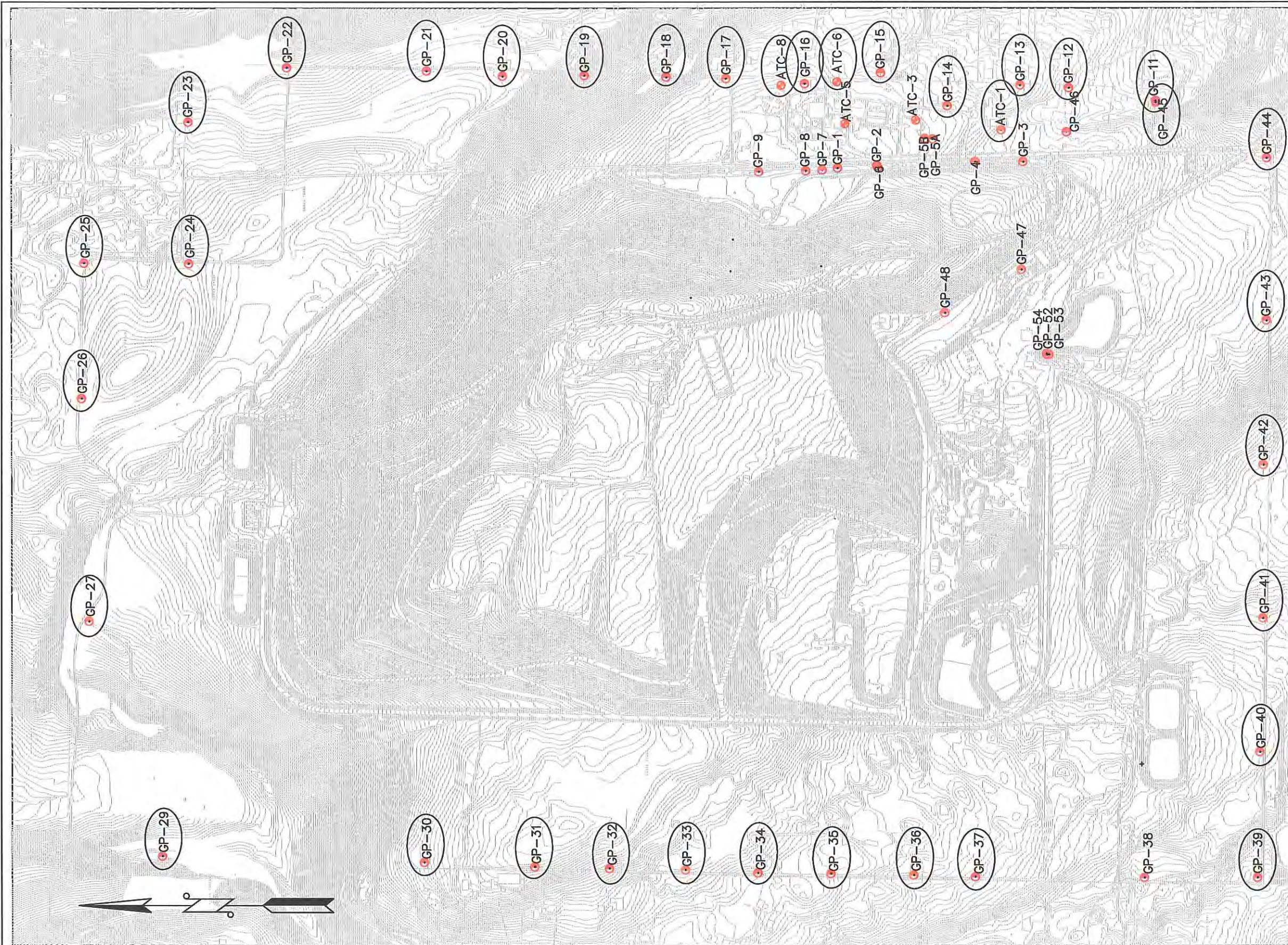


## **Attachment G**

# **2014 Landfill Gas Probe Monitoring Results**





Northing	Easting	Elev	Description	Inst. Date
170,000.33	1,701,942.93	640.02	GP-1 CASE EL	1985/86
169,740.00	1,701,960.00	622.00	GP-2 CASE EL	1985/86
168,758.11	1,701,985.28	594.21	GP-3 CASE EL	1985/86
169,058.18	1,701,972.94	606.19	GP-4 CASE EL	1985/86
169,370.19	1,702,134.95	616.23	GP-5A GRND EL	1988
169,422.02	1,702,138.87	619.63	GP-5B CASE EL	1988
169,731.73	1,701,946.48	635.59	GP-6 CASE EL	1988
170,101.22	1,701,930.58	640.66	GP-7 CASE EL	1988
170,208.37	1,701,925.10	642.67	GP8 CASE EL	1988
170,519.95	1,701,919.34	645.27	GP-9 CASE EL	1988
			GP-10 NOT INSTALLED	1988
167,890.09	1,702,389.27	567.15	GP-11 CASE EL	1988
168,466.64	1,702,473.27	568.08	GP-12 CASE EL	1988
168,790.03	1,702,490.84	588.15	GP-13 CASE EL	1988
169,271.56	1,702,354.75	613.32	GP-14 CASE EL	1988
169,724.93	1,702,446.19	618.75	GP-15 CASE EL	1988
170,214.28	1,702,500.56	630.19	GP-16 CASE EL	1988
170,738.83	1,702,535.09	625.18	GP-17 CASE EL	1988
171,132.85	1,702,543.29	600.83	GP-18 CASE EL	1988
171,634.52	1,702,554.91	544.15	GP-19 CASE EL	1988
172,224.83	1,702,550.70	496.61	GP-20 CASE EL	1988
172,729.15	1,702,584.65	489.79	GP-21 CASE EL	1988
173,662.40	1,702,607.81	374.84	GP-22 CASE EL	1988
174,317.16	1,702,248.74	501.77	GP-23 CASE EL	1988
174,313.44	1,701,311.74	544.72	GP-24 CASE EL	1988
175,011.63	1,701,324.89	533.86	GP-25 CASE EL	1988
175,043.82	1,700,364.55	541.69	GP-26 CASE EL	1988
174,963.78	1,698,935.68	484.75	GP-27 CASE EL	1988
			GP-28 NOT INSTALLED	1988
174,455.39	1,697,385.67	431.05	GP-29 CASE EL	1988
172,787.40	1,697,339.61	644.62	GP-30 CASE EL	1988
172,013.96	1,697,321.72	673.37	GP-31 CASE EL	1988
171,524.28	1,697,308.08	647.57	GP-32 CASE EL	1988
171,017.18	1,697,293.36	625.03	GP-33 CASE EL	1988
170,537.12	1,697,287.04	604.93	GP-34 CASE EL	1988
170,083.32	1,697,286.32	596.28	GP-35 CASE EL	1988
169,510.89	1,697,265.94	574.92	GP-36 CASE EL	1988
169,049.03	1,697,252.08	557.38	GP-37 CASE EL	1988
167,909.72	1,697,243.54	523.57	GP-38 CASE EL	1988
167,239.45	1,697,232.41	541.03	GP-39 CASE EL	1988
167,205.68	1,698,100.32	502.77	GP-40 CASE EL	1988
167,191.96	1,698,965.50	482.97	GP-41 CASE EL	1988
167,183.37	1,699,979.90	457.95	GP-42 CASE EL	1988
167,160.00	1,700,961.11	536.86	GP-43 CASE EL	1988
167,135.28	1,702,007.20	529.11	GP-44 CASE EL	1994
167,888.74	1,702,378.77	567.47	GP-45 CASE EL	1994
168,482.15	1,702,182.52	589.79	GP-46 CASE EL	1994
168,783.75	1,701,272.71	600.07	GP-47 CASE EL	1994
169,289.65	1,700,985.98	616.56	GP-48 CASE EL	1994
168,612.91	1,700,710.62	561.13	GP-52 GRND EL	2001
168,601.99	1,700,711.34	561.02	GP-53 GRND EL	2001
168,617.89	1,700,717.53	561.20	GP-54 GRND EL	2001
168,916.92	1,702,195.87	591.29	GP-ATC-1 GRND EL	1985/86
169,479.79	1,702,259.97	616.25	GP-ATC-3 GRND EL	1985/86
			GP-ATC-4 ABANDONED/REMOVED	
169,950.42	1,702,235.30	625.65	GP-ATC-5 GRND EL	1985/86
170,002.70	1,702,512.99	620.16	GP-ATC-6 GRND EL	1985/86
170,371.26	1,702,490.56	629.94	GP-ATC-8 GRND EL	1985/86

- LEGEND**
- INTERIOR LFG MONITORING PROBES
  - LFG MIGRATION MONITORING PROBES

DATE	REVISION	BY
Mar 2013	Baseline - Sept 2011	GTU

**KING COUNTY DEPARTMENT OF NATURAL RESOURCES AND PARKS**  
**SOLID WASTE DIVISION**

**CEDAR HILLS REGIONAL LANDFILL**  
**LANDFILL GAS MIGRATION MONITORING PLAN**

APPROVED VICTOR O. OKEREKE DATE 03-19-07  
 RECOMMENDED TOM THENO DATE 09-28-07  
 DESIGNED N/A DRAWN PHAM / McEWEN  
 PROJECT NO. \_\_\_\_\_ SURVEY NO. \_\_\_\_\_ SHEET **1** OF 1  
S:\CD\CD\Cad\mri\gas-probe-loc\all-fig-to-2016\_CadProbeOnly-01-aug2012.tmap.dwg



**CEDAR REGIONAL HILLS LANDFILL  
COMPLIANCE LANDFILL GAS MIGRATION PROBES**

<b>Probe ID</b>	<b>Date/Time</b>	<b>CH4 %vol</b>	<b>CO2 %vol</b>	<b>O2 %vol</b>	<b>Lower Explosive Limit %LEL</b>	<b>Static Pressure in INWC</b>	<b>Comments</b>
ATC-01S	1/23/2014 8:29	0.0	0.1	21.0	0.0	-1.44	
ATC-01S	2/13/2014 7:47	--	--	--	--	-0.21	No Reading - Water
ATC-01S	3/11/2014 9:05	--	--	--	--	-2.59	No Reading - Water
ATC-01S	4/23/2014 11:06	0.0	0.1	19.2	0.0	0	
ATC-01S	5/15/2014 6:47	0.0	0.1	20.9	0.0	-0.18	
ATC-01S	6/10/2014 7:00	0.0	2.2	16.6	0.0	0.14	
ATC-01S	7/16/2014 10:06	0.0	3.1	17.6	0.0	0.23	
ATC-01S	8/19/2014 13:30	0.0	2.7	17.9	0.0	0	
ATC-01S	9/10/2014 8:29	0.0	2.8	19.6	0.0	0.08	
ATC-01S	10/21/2014 14:10	0.0	2.2	19.5	0.0	0.01	
ATC-01S	11/12/2014 11:31	0.0	0.1	20.4	0.0	0	
ATC-01S	12/12/2014 7:55	--	--	--	--	-2.69	No Reading - Water
ATC-01D	1/23/2014 8:31	0.0	0.1	21.0	0.0	0	
ATC-01D	2/13/2014 7:49	0.0	0.0	20.8	0.0	0.02	
ATC-01D	3/11/2014 9:07	0.0	0.1	21.0	0.0	-0.16	
ATC-01D	4/23/2014 11:07	0.0	0.0	20.6	0.0	0	
ATC-01D	5/15/2014 6:48	0.0	0.1	20.9	0.0	0.14	
ATC-01D	6/10/2014 7:01	0.0	0.1	21.0	0.0	0.05	
ATC-01D	7/16/2014 10:08	0.0	0.1	20.3	0.0	0.02	
ATC-01D	8/19/2014 13:31	0.0	0.0	19.3	0.0	0.02	
ATC-01D	9/10/2014 8:31	0.0	0.1	21.0	0.0	0.12	
ATC-01D	10/21/2014 14:12	0.0	0.1	20.9	0.0	0	
ATC-01D	11/12/2014 11:32	0.0	0.1	20.4	0.0	0	
ATC-01D	12/12/2014 7:57	0.0	0.1	21.0	0.0	0.15	
ATC-06S	1/23/2014 9:29	0.0	0.1	21.0	0.0	-5.78	
ATC-06S	2/13/2014 8:54	0.0	0.1	20.9	0.0	1.5	
ATC-06S	3/11/2014 9:56	0.0	0.1	21.0	0.0	0.27	
ATC-06S	4/23/2014 12:44	0.0	0.1	20.4	0.0	5.24	
ATC-06S	5/15/2014 7:54	0.0	0.1	21.0	0.0	-4.8	
ATC-06S	6/10/2014 7:56	0.0	2.3	16.2	0.0	0.11	
ATC-06S	7/16/2014 11:04	0.0	2.1	18.4	0.0	0	
ATC-06S	8/19/2014 14:21	0.0	1.8	18.2	0.0	0	
ATC-06S	9/10/2014 9:28	0.0	1.9	20.1	0.0	0.01	
ATC-06S	10/21/2014 15:10	0.0	0.1	20.9	0.0	0	
ATC-06S	11/12/2014 12:19	0.0	0.1	20.6	0.0	0	
ATC-06S	12/12/2014 8:57	0.0	0.1	21.0	0.0	0.05	
ATC-06D	1/23/2014 9:31	0.0	1.0	3.3	0.0	0.1	
ATC-06D	2/13/2014 8:56	0.0	0.9	1.9	0.0	0.21	
ATC-06D	3/11/2014 9:58	0.0	0.9	1.3	0.0	-3.22	
ATC-06D	4/23/2014 12:45	0.0	0.8	1.2	0.0	4.63	
ATC-06D	5/15/2014 7:55	0.0	0.8	1.1	0.0	3.65	
ATC-06D	6/10/2014 7:58	0.0	0.4	13.2	0.0	-0.02	
ATC-06D	7/16/2014 11:05	0.0	0.3	17.1	0.0	-0.08	
ATC-06D	8/19/2014 14:22	0.0	0.2	18.0	0.0	0	
ATC-06D	9/10/2014 9:30	0.0	0.3	20.7	0.0	-0.44	
ATC-06D	10/21/2014 15:11	0.0	0.9	17.0	0.0	0.23	
ATC-06D	11/12/2014 12:21	0.0	0.8	14.7	0.0	0.26	
ATC-06D	12/12/2014 8:58	0.0	1.0	7.2	0.0	-0.06	

**CEDAR REGIONAL HILLS LANDFILL  
COMPLIANCE LANDFILL GAS MIGRATION PROBES**

<b>Probe ID</b>	<b>Date/Time</b>	<b>CH4 %vol</b>	<b>CO2 %vol</b>	<b>O2 %vol</b>	<b>Lower Explosive Limit %LEL</b>	<b>Static Pressure in INWC</b>	<b>Comments</b>
ATC-08S	1/23/2014 9:42	0.0	1.7	16.2	0.0	0.05	
ATC-08S	2/13/2014 9:07	0.0	0.1	20.8	0.0	0.11	
ATC-08S	3/11/2014 10:07	0.0	0.0	21.0	0.0	-4.97	
ATC-08S	4/23/2014 12:53	0.0	0.1	20.5	0.0	0	
ATC-08S	5/15/2014 8:07	0.0	2.1	11.5	0.0	0.12	
ATC-08S	6/10/2014 8:08	0.0	3.3	16.3	0.0	0.09	
ATC-08S	7/16/2014 11:14	0.0	2.9	18.1	0.0	-12.62	
ATC-08S	8/19/2014 14:31	0.0	1.7	17.8	0.0	0	
ATC-08S	9/10/2014 9:40	0.0	1.9	19.6	0.0	0.21	
ATC-08S	10/21/2014 14:59	0.0	2.1	19.3	0.0	0.02	
ATC-08S	11/12/2014 12:30	0.0	1.3	17.8	0.0	0	
ATC-08S	12/12/2014 8:46	0.0	0.1	21.0	0.0	0.16	
ATC-08D	1/23/2014 9:43	0.0	0.2	20.7	0.0	-0.01	
ATC-08D	2/13/2014 9:09	0.0	0.2	19.0	0.0	1.37	
ATC-08D	3/11/2014 10:09	0.0	0.3	16.9	0.0	-4.65	
ATC-08D	4/23/2014 12:55	0.0	0.3	17.9	0.0	0.1	
ATC-08D	5/15/2014 8:08	0.0	0.3	18.9	0.0	0.13	
ATC-08D	6/10/2014 8:09	0.0	0.3	20.4	0.0	0.05	
ATC-08D	7/16/2014 11:16	0.0	0.2	19.4	0.0	0	
ATC-08D	8/19/2014 14:32	0.0	0.1	17.3	0.0	0.08	
ATC-08D	9/10/2014 9:41	0.0	0.2	20.1	0.0	0.13	
ATC-08D	10/21/2014 15:01	0.0	0.3	19.3	0.0	0.05	
ATC-08D	11/12/2014 12:32	0.0	0.3	17.9	0.0	0.23	
ATC-08D	12/12/2014 8:47	0.0	0.1	20.5	0.0	-0.18	
GP-11A	1/23/2014 8:04	0.0	0.1	20.8	0.0	-0.22	
GP-11A	2/13/2014 7:35	0.0	0.1	20.4	0.0	0.59	
GP-11A	3/11/2014 8:03					0.01	
GP-11A	4/23/2014 10:43	0.0	0.4	19.7	0.0	4.49	
GP-11A	5/15/2014 8:30	0.0	0.6	18.9	0.0	-6.52	
GP-11A	6/10/2014 6:49	0.0	0.4	20.2	0.0	-9.7	
GP-11A	7/16/2014 9:14	0.0	1.4	17.8	0.0	0.37	
GP-11A	8/19/2014 13:19	0.0	1.1	18.1	0.0	0	
GP-11A	9/10/2014 8:13	0.0	2.0	19.5	0.0	0.06	
GP-11A	10/21/2014 14:00	0.0	1.6	19.5	0.0	0	
GP-11A	11/12/2014 11:15	0.0	1.1	19.3	0.0	-0.5	
GP-11A	12/12/2014 9:07	0.0	0.6	20.7	0.0	0.1	
GP-11B	1/23/2014 8:06	0.0	0.1	20.9	0.0	-0.71	
GP-11B	2/13/2014 7:37	0.0	0.3	16.5	0.0	-1.36	
GP-11B	3/11/2014 8:06	0.0	0.0	21.0	0.0	-2.99	
GP-11B	4/23/2014 10:44	0.0	0.8	6.6	0.0	0.34	
GP-11B	5/15/2014 8:32	0.0	0.0	21.0	0.0	1	
GP-11B	6/10/2014 6:51	0.0	0.1	21.1	0.0	0.22	
GP-11B	7/16/2014 9:15	0.0	1.5	16.9	0.0	0.06	
GP-11B	8/19/2014 13:21	0.0	0.0	19.0	0.0	0.8	
GP-11B	9/10/2014 8:15	0.0	0.1	20.9	0.0	-1.26	
GP-11B	10/21/2014 14:02	0.0	0.1	20.8	0.0	-1.03	
GP-11B	11/12/2014 11:17	0.0	0.1	20.5	0.0	-0.07	
GP-11B	12/12/2014 9:09	0.0	0.1	21.0	0.0	-2.02	

**CEDAR REGIONAL HILLS LANDFILL  
COMPLIANCE LANDFILL GAS MIGRATION PROBES**

<b>Probe ID</b>	<b>Date/Time</b>	<b>CH4 %vol</b>	<b>CO2 %vol</b>	<b>O2 %vol</b>	<b>Lower Explosive Limit %LEL</b>	<b>Static Pressure in INWC</b>	<b>Comments</b>
GP-11C	1/23/2014 8:08	0.0	0.1	20.8	0.0	-0.54	
GP-11C	2/13/2014 7:39	0.0	0.1	18.5	0.0	-0.04	
GP-11C	3/11/2014 8:07	0.0	0.0	21.0	0.0	-2.49	
GP-11C	4/23/2014 10:45	0.0	0.2	9.2	0.0	0.41	
GP-11C	5/15/2014 8:34	0.0	0.0	21.0	0.0	1.01	
GP-11C	6/10/2014 6:52	0.0	0.1	21.0	0.0	0.2	
GP-11C	7/16/2014 9:16	0.0	0.0	19.6	0.0	0.01	
GP-11C	8/19/2014 13:22	0.0	0.0	15.7	0.0	0.7	
GP-11C	9/10/2014 8:16	0.0	0.0	20.9	0.0	-1.21	
GP-11C	10/21/2014 14:03	0.0	0.0	20.9	0.0	-0.86	
GP-11C	11/12/2014 11:19	0.0	0.1	20.5	0.0	0.01	
GP-11C	12/12/2014 9:11	0.0	0.1	21.0	0.0	-1.57	
GP-11D	1/23/2014 8:11	0.0	0.1	20.8	0.0	0	
GP-11D	2/13/2014 7:40	0.0	0.1	20.6	0.0	0.1	
GP-11D	3/11/2014 8:09	--	--	--	--	0.02	No Reading - Water
GP-11D	4/23/2014 10:47	0.0	0.1	20.4	0.0	0.2	
GP-11D	5/15/2014 8:35	0.0	0.1	21.0	0.0	0.18	
GP-11D	6/10/2014 6:54	0.0	0.1	21.0	0.0	0.19	
GP-11D	7/16/2014 9:18	0.0	0.1	19.4	0.0	-0.07	
GP-11D	8/19/2014 13:24	0.0	0.0	19.3	0.0	0.09	
GP-11D	9/10/2014 8:18	0.0	0.1	20.8	0.0	0.12	
GP-11D	10/21/2014 14:05	0.0	0.1	20.7	0.0	0.1	
GP-11D	11/12/2014 11:20	0.0	0.1	20.4	0.0	0.13	
GP-11D	12/12/2014 9:12	0.0	0.1	21.0	0.0	0.04	
GP-12A	1/23/2014 8:46	0.0	0.1	21.0	0.0	-1.41	
GP-12A	2/13/2014 7:54	0.0	0.0	20.9	0.0	0.2	
GP-12A	3/11/2014 8:48	0.0	0.0	21.0	0.0	0.11	
GP-12A	4/23/2014 11:21	0.0	0.0	20.7	0.0	0.17	
GP-12A	5/15/2014 7:03	0.0	0.0	21.0	0.0	0.05	
GP-12A	6/10/2014 7:11	0.0	0.1	21.0	0.0	0.24	
GP-12A	7/16/2014 9:32	0.0	0.1	19.6	0.0	0.09	
GP-12A	8/19/2014 13:46	0.0	0.4	18.9	0.0	0	
GP-12A	9/10/2014 8:38	0.0	1.1	20.3	0.0	0.09	
GP-12A	10/21/2014 14:17	0.0	1.5	19.9	0.0	0	
GP-12A	11/12/2014 11:46	0.0	0.4	20.2	0.0	0.02	
GP-12A	12/12/2014 8:10	0.0	0.1	21.0	0.0	-1.04	
GP-12B	1/23/2014 8:48	0.0	0.1	21.0	0.0	-1.72	
GP-12B	2/13/2014 7:56	0.0	0.0	20.9	0.0	0.31	
GP-12B	3/11/2014 8:49	0.0	0.0	21.0	0.0	0.68	
GP-12B	4/23/2014 11:23	0.0	0.0	20.8	0.0	0	
GP-12B	5/15/2014 7:05	0.0	0.0	21.0	0.0	0.06	
GP-12B	6/10/2014 7:13	0.0	0.1	21.0	0.0	0	
GP-12B	7/16/2014 9:33	0.0	0.0	19.8	0.0	0.18	
GP-12B	8/19/2014 13:48	0.0	0.0	19.4	0.0	0	
GP-12B	9/10/2014 8:39	0.0	0.0	21.0	0.0	0.18	
GP-12B	10/21/2014 14:18	0.0	0.1	21.0	0.0	0	
GP-12B	11/12/2014 11:47	0.0	0.1	20.3	0.0	0.6	
GP-12B	12/12/2014 8:12	0.0	0.0	21.0	0.0	0.09	

**CEDAR REGIONAL HILLS LANDFILL  
COMPLIANCE LANDFILL GAS MIGRATION PROBES**

<b>Probe ID</b>	<b>Date/Time</b>	<b>CH4 %vol</b>	<b>CO2 %vol</b>	<b>O2 %vol</b>	<b>Lower Explosive Limit %LEL</b>	<b>Static Pressure in INWC</b>	<b>Comments</b>
GP-12C	1/23/2014 8:51	0.0	0.2	19.0	0.0	-17.4	
GP-12C	2/13/2014 7:57	0.0	0.2	18.9	0.0	0.77	
GP-12C	3/11/2014 8:51	0.0	0.1	19.3	0.0	-4.89	
GP-12C	4/23/2014 11:24	0.0	0.1	19.6	0.0	0	
GP-12C	5/15/2014 7:06	0.0	0.1	20.3	0.0	0.04	
GP-12C	6/10/2014 7:14	0.0	0.2	20.6	0.0	0.48	
GP-12C	7/16/2014 9:35	0.0	0.1	19.2	0.0	0.02	
GP-12C	8/19/2014 13:49	0.0	0.0	18.8	0.0	0	
GP-12C	9/10/2014 8:41	0.0	0.1	20.6	0.0	0.13	
GP-12C	10/21/2014 14:20	0.0	0.2	19.2	0.0	5.78	
GP-12C	11/12/2014 11:49	0.0	0.2	18.1	0.0	-5.19	
GP-12C	12/12/2014 8:14	0.0	0.2	17.7	0.0	11.41	
GP-12D	1/23/2014 8:52	0.0	0.7	3.9	0.0	-2.44	
GP-12D	2/13/2014 7:59	0.0	0.9	2.8	0.0	-0.04	
GP-12D	3/11/2014 8:53	0.0	0.8	1.9	0.0	-8.9	
GP-12D	4/23/2014 11:25	0.0	0.5	14.1	0.0	1.58	
GP-12D	5/15/2014 7:08	0.0	0.8	2.3	0.0	0.45	
GP-12D	6/10/2014 7:16	0.0	0.2	21.0	0.0	0.05	
GP-12D	7/16/2014 9:37	0.0	0.1	19.9	0.0	-0.03	
GP-12D	8/19/2014 13:51	0.0	0.1	17.7	0.0	0.72	
GP-12D	9/10/2014 8:42	0.0	0.1	21.0	0.0	-1.16	
GP-12D	10/21/2014 14:21	0.0	0.3	20.7	0.0	-1.25	
GP-12D	11/12/2014 11:50	0.0	0.3	19.5	0.0	-2.62	
GP-12D	12/12/2014 8:16	0.0	0.8	6.4	0.0	1.17	
GP-13A	1/23/2014 8:37	0.0	0.1	21.0	0.0	0.6	
GP-13A	2/3/2014 11:21	0.0	0.1	21.0	0.0	1.83	
GP-13A	2/13/2014 8:03	0.0	0.1	20.9	0.0	0.17	
GP-13A	2/18/2014 13:39	0.0	0.1	20.7	0.0	0.22	
GP-13A	2/25/2014 10:13	0.0	0.1	20.7	0.0	0	
GP-13A	3/11/2014 8:56	0.0	0.0	21.0	0.0	0.25	
GP-13A	3/25/2014 13:04	0.0	0.1	20.4	0.0	0.01	
GP-13A	3/31/2014 12:24	0.0	0.1	20.7	0.0	0.01	
GP-13A	4/7/2014 10:40	0.0	0.1	20.7	0.0	0.15	
GP-13A	4/23/2014 11:11	0.0	0.0	20.6	0.0	0	
GP-13A	5/7/2014 14:47	0.0	0.0	19.7	0.0	0.07	
GP-13A	5/15/2014 6:54	0.0	0.0	21.0	0.0	0.08	
GP-13A	6/4/2014 13:40	0.0	0.1	20.8	0.0	-29.09	
GP-13A	6/10/2014 7:20	0.0	2.5	15.4	0.0	0.15	
GP-13A	6/16/2014 13:22	0.0	2.5	16.9	0.0	0.17	
GP-13A	6/23/2014 12:09	0.0	2.1	17.9	0.0	0.19	
GP-13A	6/30/2014 12:13	0.0	2.4	18.0	0.0	0.19	
GP-13A	7/7/2014 13:47	0.0	2.3	18.7	0.0	-0.06	
GP-13A	7/16/2014 9:44	0.0	2.0	18.3	0.0	0.09	
GP-13A	7/23/2014 12:36	0.0	2.2	19.4	0.0	0.01	
GP-13A	7/28/2014 12:19	0.0	1.9	19.3	0.0	0.12	
GP-13A	8/14/2014 10:28	0.0	1.8	17.5	0.0	0	
GP-13A	8/19/2014 13:37	0.0	1.4	18.2	0.0	0	
GP-13A	9/10/2014 8:46	0.0	1.7	19.7	0.0	0.18	
GP-13A	10/21/2014 14:25	0.0	1.4	20.0	0.0	0	
GP-13A	11/12/2014 11:37	0.0	1.6	18.8	0.0	0	
GP-13A	12/12/2014 8:02	0.0	0.1	21.0	0.0	0.05	



**CEDAR REGIONAL HILLS LANDFILL  
COMPLIANCE LANDFILL GAS MIGRATION PROBES**

<b>Probe ID</b>	<b>Date/Time</b>	<b>CH4 %vol</b>	<b>CO2 %vol</b>	<b>O2 %vol</b>	<b>Lower Explosive Limit %LEL</b>	<b>Static Pressure in INWC</b>	<b>Comments</b>
GP-13B	1/23/2014 8:38	0.0	0.1	21.0	0.0	0	
GP-13B	2/3/2014 11:23	0.0	0.1	21.0	0.0	0	
GP-13B	2/13/2014 8:04	0.0	0.1	20.9	0.0	0.19	
GP-13B	2/18/2014 13:41	0.0	0.1	20.7	0.0	0.24	
GP-13B	2/25/2014 10:15	0.0	0.2	20.5	0.0	0.58	
GP-13B	3/11/2014 8:58	0.0	0.0	21.0	0.0	0.17	
GP-13B	3/25/2014 13:05	0.0	0.1	20.6	0.0	0.11	
GP-13B	3/31/2014 12:26	0.0	0.1	20.6	0.0	0.07	
GP-13B	4/7/2014 10:42	0.0	0.1	20.6	0.0	0.24	
GP-13B	4/23/2014 11:12	0.0	0.0	20.5	0.0	0.03	
GP-13B	5/7/2014 14:49	0.0	0.0	19.6	0.0	0.13	
GP-13B	5/15/2014 6:56	0.0	0.1	20.8	0.0	0.09	
GP-13B	6/4/2014 13:42	0.0	0.1	20.7	0.0	0.18	
GP-13B	6/10/2014 7:21	0.0	0.2	21.0	0.0	0.24	
GP-13B	6/16/2014 13:24	0.0	0.2	20.7	0.0	0.18	
GP-13B	6/23/2014 12:10	0.0	0.1	20.8	0.0	0.25	
GP-13B	6/30/2014 12:15	0.0	0.1	20.6	0.0	0.22	
GP-13B	7/7/2014 13:48	0.0	0.1	20.9	0.0	-0.01	
GP-13B	7/16/2014 9:46	0.0	0.0	20.0	0.0	0.02	
GP-13B	7/23/2014 12:38	0.0	0.1	21.0	0.0	0.04	
GP-13B	7/28/2014 12:21	0.0	0.1	20.9	0.0	0.03	
GP-13B	8/14/2014 10:29	0.0	0.0	18.5	0.0	-0.07	
GP-13B	8/19/2014 13:38	0.0	0.0	19.0	0.0	-0.05	
GP-13B	9/10/2014 8:48	0.0	0.0	21.0	0.0	-0.02	
GP-13B	10/21/2014 14:27	0.0	0.1	20.9	0.0	0.04	
GP-13B	11/12/2014 11:39	0.0	0.5	16.4	0.0	0.11	
GP-13B	12/12/2014 8:04	0.0	0.1	20.7	0.0	0.06	
GP-13C	1/23/2014 8:40	0.0	0.1	21.0	0.0	0	
GP-13C	2/3/2014 11:25	0.0	0.1	21.0	0.0	-1.25	
GP-13C	2/13/2014 8:06	0.0	0.0	21.0	0.0	0.15	
GP-13C	2/18/2014 13:42	0.0	0.1	20.5	0.0	2.12	
GP-13C	2/25/2014 10:17	0.0	0.1	19.9	0.0	-0.32	
GP-13C	3/11/2014 9:00	0.0	0.0	21.0	0.0	-0.01	
GP-13C	3/25/2014 13:07	0.0	0.2	13.3	0.0	0.21	
GP-13C	3/31/2014 12:28	0.0	0.1	20.5	0.0	0.29	
GP-13C	4/7/2014 10:44	0.0	0.0	20.7	0.0	0.37	
GP-13C	4/23/2014 11:14	0.0	0.1	16.6	0.0	0	
GP-13C	5/7/2014 14:51	0.0	0.0	19.8	0.0	0.1	
GP-13C	5/15/2014 6:57	0.0	0.1	14.2	0.0	0.13	
GP-13C	6/4/2014 13:44	0.0	0.1	20.8	0.0	0.17	
GP-13C	6/10/2014 7:23	0.0	0.1	19.9	0.0	0.13	
GP-13C	6/16/2014 13:25	0.0	0.2	14.0	0.0	0.33	
GP-13C	6/23/2014 12:12	0.0	0.0	18.4	0.0	0.43	
GP-13C	6/30/2014 12:16	0.0	0.0	20.6	0.0	0.36	
GP-13C	7/7/2014 13:50	0.0	0.0	21.0	0.0	-0.07	
GP-13C	7/16/2014 9:48	0.0	0.0	19.7	0.0	0.03	
GP-13C	7/23/2014 12:40	0.0	0.0	21.0	0.0	0	
GP-13C	7/28/2014 12:22	0.0	0.0	20.6	0.0	0	
GP-13C	8/14/2014 10:31	0.0	0.0	18.6	0.0	0	
GP-13C	8/19/2014 13:39	0.0	0.0	8.9	0.0	0	
GP-13C	9/10/2014 8:49	0.0	0.0	21.0	0.0	-0.05	
GP-13C	10/21/2014 14:28	0.0	0.0	21.0	0.0	-0.06	
GP-13C	11/12/2014 11:40	0.0	0.1	20.4	0.0	-0.08	
GP-13C	12/12/2014 8:05	0.0	0.1	21.0	0.0	0.12	

**CEDAR REGIONAL HILLS LANDFILL  
COMPLIANCE LANDFILL GAS MIGRATION PROBES**

<b>Probe ID</b>	<b>Date/Time</b>	<b>CH4 %vol</b>	<b>CO2 %vol</b>	<b>O2 %vol</b>	<b>Lower Explosive Limit %LEL</b>	<b>Static Pressure in INWC</b>	<b>Comments</b>
GP-13D	1/23/2014 8:42	0.0	0.1	21.0	0.0	-2.23	
GP-13D	2/3/2014 11:26	0.0	0.1	21.0	0.0	-1.29	
GP-13D	2/13/2014 8:07	0.0	0.0	21.0	0.0	-1.2	
GP-13D	2/18/2014 13:44	0.0	0.3	18.4	0.0	2.55	
GP-13D	2/25/2014 10:19	0.0	0.1	20.7	0.0	-1.5	
GP-13D	3/11/2014 9:01	0.0	0.0	21.0	0.0	-5.64	
GP-13D	3/25/2014 13:09	0.0	0.4	17.0	0.0	6.03	
GP-13D	3/31/2014 12:29	0.0	0.2	19.9	0.0	0.43	
GP-13D	4/7/2014 10:47	0.0	0.0	20.7	0.0	-2.76	
GP-13D	4/23/2014 11:17	0.0	0.3	17.3	0.0	0.44	
GP-13D	5/7/2014 14:52	0.0	0.0	19.9	0.0	0.09	
GP-13D	5/15/2014 6:59	0.0	0.1	20.0	0.0	0.94	
GP-13D	6/4/2014 13:46	0.0	0.1	20.8	0.0	-1.06	
GP-13D	6/10/2014 7:24	0.0	0.1	21.0	0.0	-0.36	
GP-13D	6/16/2014 13:27	0.0	0.3	16.6	0.0	0.27	
GP-13D	6/23/2014 12:13	0.0	0.0	21.0	0.0	0.3	
GP-13D	6/30/2014 12:18	0.0	0.0	20.7	0.0	-1.38	
GP-13D	7/7/2014 13:51	0.0	0.0	21.1	0.0	-0.82	
GP-13D	7/16/2014 9:50	0.0	0.0	20.2	0.0	-0.27	
GP-13D	7/23/2014 12:41	0.0	0.0	21.0	0.0	-0.62	
GP-13D	7/28/2014 12:24	0.0	0.0	21.0	0.0	-0.55	
GP-13D	8/14/2014 10:33	0.0	0.0	18.6	0.0	-1.23	
GP-13D	8/19/2014 13:41	0.0	0.2	15.7	0.0	1.49	
GP-13D	9/10/2014 8:51	0.0	0.0	21.0	0.0	-2.76	
GP-13D	10/21/2014 14:30	0.0	0.0	21.0	0.0	-1.85	
GP-13D	11/12/2014 11:42	0.0	0.1	20.5	0.0	-1.34	
GP-13D	12/12/2014 8:07	0.0	0.0	21.0	0.0	-1.62	
GP-14A	1/23/2014 8:59	0.0	0.1	21.0	0.0	-2.26	
GP-14A	2/3/2014 11:37	0.0	0.7	13.9	0.0	-1.1	
GP-14A	2/13/2014 8:13	0.0	0.6	15.0	0.0	-0.84	
GP-14A	2/18/2014 13:49	0.0	0.1	20.9	0.0	1.72	
GP-14A	2/25/2014 10:24	0.0	0.1	20.7	0.0	-0.19	
GP-14A	3/11/2014 9:12	0.0	0.0	21.0	0.0	-0.44	
GP-14A	3/25/2014 13:15	0.0	0.3	18.2	0.0	5.45	
GP-14A	3/31/2014 12:34	0.0	0.1	20.7	0.0	0.43	
GP-14A	4/7/2014 10:54	0.0	0.1	20.7	0.0	-2.82	
GP-14A	4/23/2014 11:31	0.0	0.2	19.9	0.0	0.63	
GP-14A	5/7/2014 14:56	0.0	0.0	20.1	0.0	0.16	
GP-14A	5/15/2014 7:16	0.0	0.1	20.6	0.0	0.72	
GP-14A	6/4/2014 13:52	0.0	0.1	20.9	0.0	-0.63	
GP-14A	6/10/2014 7:29	0.0	0.0	21.0	0.0	0.14	
GP-14A	6/16/2014 13:32	0.0	0.2	17.9	0.0	1.18	
GP-14A	6/23/2014 12:20	0.0	0.0	21.0	0.0	-0.09	
GP-14A	6/30/2014 12:23	0.0	0.0	20.7	0.0	-2.2	
GP-14A	7/7/2014 13:57	0.0	0.0	21.0	0.0	-0.01	
GP-14A	7/16/2014 9:57	0.0	0.0	20.3	0.0	-0.24	
GP-14A	7/23/2014 12:47	0.0	0.0	21.0	0.0	-0.11	
GP-14A	7/28/2014 12:31	0.0	0.0	21.0	0.0	-0.55	
GP-14A	8/14/2014 10:38	0.0	0.0	18.7	0.0	-1.07	
GP-14A	8/19/2014 13:58	0.0	0.0	16.6	0.0	1.57	
GP-14A	9/10/2014 8:56	0.0	0.0	21.0	0.0	-2.92	
GP-14A	10/21/2014 14:34	0.0	0.1	20.5	0.0	-1.67	
GP-14A	11/12/2014 11:56	0.0	0.1	20.6	0.0	-1.24	
GP-14A	12/12/2014 8:22	0.0	0.8	14.4	0.0	-0.72	

**CEDAR REGIONAL HILLS LANDFILL  
COMPLIANCE LANDFILL GAS MIGRATION PROBES**

<b>Probe ID</b>	<b>Date/Time</b>	<b>CH4 %vol</b>	<b>CO2 %vol</b>	<b>O2 %vol</b>	<b>Lower Explosive Limit %LEL</b>	<b>Static Pressure in INWC</b>	<b>Comments</b>
GP-14B	1/23/2014 9:01	0.0	0.1	21.0	0.0	-2.37	
GP-14B	2/3/2014 11:39	0.0	0.1	21.0	0.0	0	
GP-14B	2/13/2014 8:14	0.0	0.1	21.0	0.0	-0.98	
GP-14B	2/18/2014 13:50	0.0	1.5	15.9	0.0	1.71	
GP-14B	2/25/2014 10:25	0.0	0.1	20.8	0.0	-1.45	
GP-14B	3/11/2014 9:14	0.0	0.0	21.0	0.0	-7.14	
GP-14B	3/25/2014 13:17	0.0	1.3	16.3	0.0	5.29	
GP-14B	3/31/2014 12:35	0.0	0.1	20.8	0.0	0.29	
GP-14B	4/7/2014 10:55	0.0	0.0	20.9	0.0	-1.62	
GP-14B	4/23/2014 11:32	0.0	1.5	15.2	0.0	0.46	
GP-14B	5/7/2014 14:58	0.0	0.0	20.1	0.0	-0.14	
GP-14B	5/15/2014 7:18	0.0	0.1	20.9	0.0	0.54	
GP-14B	6/4/2014 13:53	0.0	0.1	20.8	0.0	-0.01	
GP-14B	6/10/2014 7:30	0.0	0.0	21.0	0.0	-0.25	
GP-14B	6/16/2014 13:33	0.0	1.4	15.5	0.0	0.45	
GP-14B	6/23/2014 12:21	0.0	0.0	21.0	0.0	0.2	
GP-14B	6/30/2014 12:25	0.0	0.0	20.7	0.0	-1.09	
GP-14B	7/7/2014 14:00	0.0	0.0	20.9	0.0	-0.95	
GP-14B	7/16/2014 9:59	0.0	0.0	20.4	0.0	-0.28	
GP-14B	7/23/2014 12:48	0.0	0.0	21.0	0.0	-0.85	
GP-14B	7/28/2014 12:32	0.0	0.0	21.0	0.0	-0.73	
GP-14B	8/14/2014 10:39	0.0	0.0	18.7	0.0	-1.18	
GP-14B	8/19/2014 14:00	0.0	1.0	14.7	0.0	1.39	
GP-14B	9/10/2014 8:57	0.0	0.0	21.0	0.0	-3.07	
GP-14B	10/21/2014 14:35	0.0	0.0	21.0	0.0	-1.78	
GP-14B	11/12/2014 11:58	0.0	0.1	20.6	0.0	-1.35	
GP-14B	12/12/2014 8:23	0.0	0.1	21.0	0.0	-0.83	
GP-15A	1/23/2014 9:15	0.0	0.1	21.0	0.0	-0.24	
GP-15A	2/3/2014 11:45	0.0	0.0	0.0	0.0	-0.44	
GP-15A	2/13/2014 8:42	0.0	0.3	20.7	0.0	8.38	
GP-15A	2/18/2014 13:55	0.0	0.0	0.0	0.0	2.99	
GP-15A	2/25/2014 10:31	0.0	0.0	0.0	0.0	-3.83	
GP-15A	3/11/2014 9:42					0.14	
GP-15A	3/25/2014 15:11	0.0	0.4	17.6	0.0	-4.54	
GP-15A	3/31/2014 12:40	0.0	0.5	20.6	0.0	2.79	
GP-15A	4/7/2014 11:10	0.0	0.8	20.5	0.0	-5.93	
GP-15A	4/23/2014 12:34					0	
GP-15A	4/23/2014 12:35	0.0	2.0	8.8	0.0	0.2	
GP-15A	5/7/2014 14:08	0.0	0.7	19.8	0.0	-4.43	
GP-15A	5/15/2014 7:33	0.0	0.5	20.9	0.0	-10.35	
GP-15A	6/4/2014 14:08	0.0	0.5	20.7	0.0	0.18	
GP-15A	6/10/2014 7:37	0.0	0.4	21.0	0.0	0.23	
GP-15A	6/16/2014 13:52	0.0	0.4	20.9	0.0	0.51	
GP-15A	6/23/2014 12:27	0.0	0.3	20.9	0.0	0.46	
GP-15A	6/30/2014 12:31	0.0	0.4	20.4	0.0	0.1	
GP-15A	7/7/2014 14:06	0.0	0.3	20.4	0.0	-0.06	
GP-15A	7/16/2014 10:32	0.0	0.7	19.5	0.0	0.3	
GP-15A	7/23/2014 12:54	0.0	0.6	20.8	0.0	0.02	
GP-15A	7/28/2014 12:39	0.0	0.4	20.5	0.0	0.14	
GP-15A	8/14/2014 10:56	0.0	0.8	18.2	0.0	0.16	
GP-15A	8/19/2014 14:11	0.0	1.0	17.9	0.0	0	
GP-15A	9/10/2014 9:08	0.0	0.0	0.0	0.0	-0.23	
GP-15A	10/21/2014 14:51	0.0	0.0	0.0	0.0	-17.66	
GP-15A	11/12/2014 12:10	0.0	0.0	0.0	0.0	0	

**CEDAR REGIONAL HILLS LANDFILL  
COMPLIANCE LANDFILL GAS MIGRATION PROBES**

<b>Probe ID</b>	<b>Date/Time</b>	<b>CH4 %vol</b>	<b>CO2 %vol</b>	<b>O2 %vol</b>	<b>Lower Explosive Limit %LEL</b>	<b>Static Pressure in INWC</b>	<b>Comments</b>
GP-15C	1/23/2014 9:21	0.0	2.2	8.5	0.0	-3.84	
GP-15C	2/3/2014 11:46	0.0	2.6	5.5	0.0	0.26	
GP-15C	2/13/2014 8:44	0.0	3.0	3.6	0.0	0.06	
GP-15C	2/18/2014 13:57	0.0	2.2	7.5	0.0	0.42	
GP-15C	2/25/2014 10:34	0.0	2.5	5.7	0.0	-0.13	
GP-15C	3/11/2014 9:44	0.0	1.8	10.9	0.0	-5.25	
GP-15C	3/25/2014 14:12	0.0	2.5	6.6	0.0	0.59	
GP-15C	3/31/2014 12:42	0.0	1.9	9.5	0.0	1.29	
GP-15C	4/7/2014 11:12	0.0	0.3	19.4	0.0	0.22	
GP-15C	4/23/2014 12:37	0.0	0.2	20.0	0.0	-2.89	
GP-15C	5/7/2014 14:10	--	--	--	--	0.44	No Reading - Water
GP-15C	5/15/2014 7:35	--	--	--	--	1.32	No Reading - Water
GP-15C	6/4/2014 14:09	--	--	--	--	-0.6	No Reading - Water
GP-15C	6/10/2014 7:39	--	--	--	--	0.3	No Reading - Water
GP-15C	6/16/2014 13:54	--	--	--	--	1.19	No Reading - Water
GP-15C	6/23/2014 12:29	--	--	--	--	0.2	No Reading - Water
GP-15C	6/30/2014 12:33	--	--	--	--	-0.01	No Reading - Water
GP-15C	7/7/2014 14:08	--	--	--	--	0.34	No Reading - Water
GP-15C	7/16/2014 10:34	--	--	--	--	0.54	No Reading - Water
GP-15C	7/23/2014 12:56	0.0	2.8	4.2	0.0	0	
GP-15C	7/28/2014 12:41	--	--	--	--	0.2	No Reading - Water
GP-15C	8/14/2014 10:58	--	--	--	--	0	No Reading - Water
GP-15C	8/19/2014 14:13	0.0	2.2	4.7	0.0	0.73	
GP-15C	9/10/2014 9:10	0.0	1.0	15.2	0.0	-1.32	
GP-15C	10/21/2014 14:48	0.0	2.0	10.3	0.0	-0.69	
GP-15C	11/12/2014 12:11	0.0	1.1	15.0	0.0	0.69	
GP-15D	1/23/2014 9:21	0.0	0.2	21.0	0.0	0.06	
GP-15D	2/3/2014 11:48	0.0	0.2	21.0	0.0	0	
GP-15D	2/13/2014 8:46	0.0	0.2	20.7	0.0	-3.5	
GP-15D	2/18/2014 13:59	0.0	0.2	20.9	0.0	-3.51	
GP-15D	2/25/2014 10:36	0.0	0.2	20.6	0.0	-4.72	
GP-15D	3/11/2014 9:46	0.0	0.2	20.7	0.0	-22	Water at 53 Seconds
GP-15D	3/25/2014 14:15	0.0	0.3	20.7	0.0	-1.86	Water at 48 Seconds
GP-15D	3/31/2014 12:44	--	--	--	--	-3.91	No Reading - Water
GP-15D	4/7/2014 11:14	--	--	--	--	-5.22	No Reading - Water
GP-15D	5/7/2014 14:13	--	--	--	--	-3.18	No Reading - Water
GP-15D	5/15/2014 7:38	0.0	0.1	21.0	0.0	-3.53	
GP-15D	6/4/2014 14:11	0.0	0.2	20.8	0.0	-1.19	
GP-15D	6/10/2014 7:41	0.0	0.1	21.0	0.0	-4.73	
GP-15D	6/16/2014 13:55	0.0	0.2	21.0	0.0	-4.31	
GP-15D	6/23/2014 12:31	0.0	0.0	21.0	0.0	-2.94	
GP-15D	6/30/2014 12:35	0.0	0.1	20.4	0.0	-2.06	
GP-15D	7/7/2014 14:10	0.0	0.1	20.4	0.0	-3.9	
GP-15D	7/16/2014 10:35	0.0	0.1	20.1	0.0	-4	
GP-15D	7/23/2014 12:57	0.0	0.1	21.0	0.0	-4.37	
GP-15D	7/28/2014 12:43	0.0	0.1	20.5	0.0	-4.35	
GP-15D	8/14/2014 11:00	0.0	0.1	18.4	0.0	-4.3	
GP-15D	8/19/2014 14:14	0.0	0.0	19.0	0.0	-3.81	
GP-15D	9/10/2014 9:12	0.0	0.1	21.0	0.0	-3.66	
GP-15D	10/21/2014 14:50	0.0	0.2	20.7	0.0	-4.46	
GP-15D	11/12/2014 12:13	0.0	0.2	20.4	0.0	-4.35	

**CEDAR REGIONAL HILLS LANDFILL  
COMPLIANCE LANDFILL GAS MIGRATION PROBES**

<b>Probe ID</b>	<b>Date/Time</b>	<b>CH4 %vol</b>	<b>CO2 %vol</b>	<b>O2 %vol</b>	<b>Lower Explosive Limit %LEL</b>	<b>Static Pressure in INWC</b>	<b>Comments</b>
GP-16A	1/23/2014 9:34	0.0	0.2	21.0	0.0	0.04	
GP-16A	2/3/2014 11:59	0.0	0.2	21.0	0.0	0.78	
GP-16A	2/13/2014 9:00	0.0	0.1	20.6	0.0	0.06	
GP-16A	2/18/2014 14:08	0.0	0.1	21.2	0.0	0.15	
GP-16A	2/25/2014 10:45	0.0	0.0	0.0	0.0	0.41	
GP-16A	3/11/2014 10:01					-0.86	
GP-16A	3/25/2014 14:25	0.0	0.2	20.9	0.0	0.17	
GP-16A	3/31/2014 12:52	0.0	0.3	20.5	0.0	0.68	
GP-16A	4/7/2014 11:23	0.0	0.2	20.7	0.0	0.6	
GP-16A	4/23/2014 12:48	0.0	0.3	19.9	0.0	0.06	
GP-16A	5/7/2014 14:21	0.0	0.1	20.0	0.0	0.1	
GP-16A	5/15/2014 8:00	0.0	0.3	20.8	0.0	0.26	
GP-16A	6/4/2014 14:19	0.0	0.3	20.6	0.0	0.22	
GP-16A	6/10/2014 8:01	0.0	2.3	17.6	0.0	-0.01	
GP-16A	6/16/2014 13:43	0.0	4.9	13.0	0.0	0.31	
GP-16A	6/23/2014 12:45	0.0	5.0	14.5	0.0	0.02	
GP-16A	6/30/2014 12:44	0.0	5.2	15.3	0.0	0.31	
GP-16A	7/7/2014 14:18	0.0	4.8	16.5	0.0	0.12	
GP-16A	7/16/2014 11:09	0.0	5.0	16.6	0.0	0.09	
GP-16A	7/23/2014 13:05	0.0	5.3	18.4	0.0	0.01	
GP-16A	7/28/2014 12:50	0.0	4.5	18.2	0.0	0.32	
GP-16A	8/14/2014 11:06	0.0	3.9	16.7	0.0	0	
GP-16A	8/19/2014 14:25	0.0	2.8	17.2	0.0	0	
GP-16A	9/10/2014 9:33	0.0	3.2	19.0	0.0	0.01	
GP-16A	10/21/2014 15:07	0.0	1.3	20.1	0.0	0.07	
GP-16A	11/12/2014 12:25	0.0	0.2	20.3	0.0	0.04	
GP-16A	12/12/2014 8:50	0.0	0.2	21.0	0.0	-0.04	
GP-16B	1/23/2014 9:37	0.0	0.1	21.0	0.0	-2.23	
GP-16B	2/3/2014 12:01	0.0	0.2	20.5	0.0	-0.18	
GP-16B	2/13/2014 9:02	0.0	0.2	20.0	0.0	-1.24	
GP-16B	2/18/2014 14:10	0.0	0.3	19.7	0.0	1.83	
GP-16B	2/25/2014 10:51	0.0	0.1	20.2	0.0	0.02	
GP-16B	3/11/2014 10:02	0.0	0.1	21.0	0.0	-8.12	
GP-16B	3/25/2014 14:27	0.0	0.2	20.4	0.0	0.6	
GP-16B	3/25/2014 14:28	0.0	1.1	13.1	0.0	6.79	
GP-16B	3/31/2014 12:54	0.0	0.2	20.1	0.0	1.12	
GP-16B	4/7/2014 11:25	0.0	0.1	20.8	0.0	-2.73	
GP-16B	4/23/2014 12:50	0.0	0.4	18.2	0.0	1.91	
GP-16B	5/7/2014 14:23	0.0	0.1	19.6	0.0	0.62	
GP-16B	5/15/2014 8:01	0.0	0.1	21.0	0.0	-0.19	
GP-16B	6/4/2014 14:20	--	--	--	--	-0.96	No Reading - Water
GP-16B	6/10/2014 8:03	--	--	--	--	-0.19	No Reading - Water
GP-16B	6/16/2014 13:45	0.0	0.2	20.4	0.0	0.16	
GP-16B	6/23/2014 12:47	0.0	0.1	21.0	0.0	0.22	
GP-16B	6/30/2014 12:45	0.0	0.1	20.4	0.0	-2.4	
GP-16B	7/7/2014 14:20	0.0	0.1	20.6	0.0	-1.51	
GP-16B	7/16/2014 11:10	0.0	0.1	20.1	0.0	-0.57	
GP-16B	7/23/2014 13:07	0.0	0.1	21.0	0.0	-0.85	
GP-16B	7/28/2014 12:52	0.0	0.1	20.9	0.0	-1.67	
GP-16B	8/14/2014 11:08	0.0	0.1	18.3	0.0	-0.9	
GP-16B	8/19/2014 14:27	0.0	0.2	18.2	0.0	1.71	
GP-16B	9/10/2014 9:35	0.0	0.1	21.0	0.0	-3.86	
GP-16B	10/21/2014 15:03	0.0	0.2	20.5	0.0	-0.02	
GP-16B	11/12/2014 12:26	0.0	0.1	20.4	0.0	-2.67	
GP-16B	12/12/2014 8:52	0.0	0.1	21.0	0.0	-1.08	

**CEDAR REGIONAL HILLS LANDFILL  
COMPLIANCE LANDFILL GAS MIGRATION PROBES**

<b>Probe ID</b>	<b>Date/Time</b>	<b>CH4 %vol</b>	<b>CO2 %vol</b>	<b>O2 %vol</b>	<b>Lower Explosive Limit %LEL</b>	<b>Static Pressure in INWC</b>	<b>Comments</b>
GP-16C	1/23/2014 9:38	0.0	0.1	21.0	0.0	-2.07	
GP-16C	2/3/2014 12:03	0.0	0.1	21.0	0.0	-0.9	
GP-16C	2/13/2014 9:04	0.0	1.2	12.7	0.0	-1.21	
GP-16C	2/18/2014 14:12	0.0	0.1	20.8	0.0	2.98	
GP-16C	2/25/2014 10:53	0.0	0.1	20.8	0.0	-1.22	
GP-16C	3/11/2014 10:04	0.0	0.0	21.0	0.0	-8.31	
GP-16C	3/31/2014 12:55	0.0	0.1	20.6	0.0	0.9	
GP-16C	4/7/2014 11:26	0.0	0.1	20.8	0.0	-1.71	
GP-16C	4/23/2014 12:51	0.0	1.0	12.9	0.0	0.87	
GP-16C	5/7/2014 14:24	0.0	0.0	20.0	0.0	0.12	
GP-16C	5/15/2014 8:03	0.0	0.1	21.0	0.0	1.1	
GP-16C	6/4/2014 14:22	0.0	0.1	20.9	0.0	-0.07	
GP-16C	6/10/2014 8:05	0.0	0.1	21.0	0.0	-0.4	
GP-16C	6/16/2014 13:46	0.0	0.7	16.3	0.0	0.49	
GP-16C	6/23/2014 12:49	0.0	0.0	21.0	0.0	1.19	
GP-16C	6/30/2014 12:47	0.0	0.0	20.4	0.0	-2	
GP-16C	7/7/2014 14:21	0.0	0.1	20.7	0.0	-0.67	
GP-16C	7/16/2014 11:12	0.0	0.0	20.2	0.0	-0.32	
GP-16C	7/23/2014 13:09	0.0	0.1	21.0	0.0	-0.59	
GP-16C	7/28/2014 12:54	0.0	0.1	20.8	0.0	-0.38	
GP-16C	8/14/2014 11:10	0.0	0.0	18.7	0.0	-0.93	
GP-16C	8/19/2014 14:28	0.0	0.7	12.6	0.0	1.57	
GP-16C	9/10/2014 9:36	0.0	0.1	21.0	0.0	-2.96	
GP-16C	10/21/2014 15:05	0.0	0.1	20.9	0.0	-1.53	
GP-16C	11/12/2014 12:28	0.0	0.1	20.4	0.0	-0.93	
GP-16C	12/12/2014 8:53	0.0	1.0	17.1	0.0	-1.05	
GP-17A	1/23/2014 12:39						
GP-17A	2/13/2014 11:46	0.0	0.3	13.4	0.0	0.45	
GP-17A	3/11/2014 13:19					-14.93	
GP-17A	4/23/2014 15:14					0	
GP-17A	5/15/2014 10:47	0.0	1.1	20.1	0.0	0.52	
GP-17A	6/10/2014 10:28	0.0	0.2	20.6	0.0	0.28	
GP-17A	7/16/2014 13:23					0.27	
GP-17A	8/19/2014 15:08	0.0	3.6	9.9	0.0	0	
GP-17A	9/10/2014 12:44	0.0	3.7	13.9	0.0	0.11	
GP-17A	10/21/2014 9:03	0.0	0.0	0.0	0.0	-0.02	
GP-17A	11/12/2014 13:56	0.0	0.0	0.0	0.0	0	
GP-17A	12/12/2014 10:59	0.0	1.3	17.1	0.0	0.17	
GP-17B	1/23/2014 12:41	0.0	0.4	19.3	0.0	0	
GP-17B	2/13/2014 11:48	0.0	1.0	16.5	0.0	0.04	
GP-17B	3/11/2014 13:20	0.0	0.7	17.1	0.0	0.08	
GP-17B	4/23/2014 15:16	0.0	0.9	16.8	0.0	0	
GP-17B	5/15/2014 10:49	0.0	0.7	17.2	0.0	0.05	
GP-17B	6/10/2014 10:30	0.0	0.8	18.0	0.0	0.59	
GP-17B	7/16/2014 13:25	0.0	0.7	17.4	0.0	-0.1	
GP-17B	8/19/2014 15:10	0.0	0.5	15.9	0.0	0	
GP-17B	9/10/2014 12:46	0.0	0.7	16.1	0.0	-2.86	
GP-17B	10/21/2014 9:04	0.0	0.8	17.1	0.0	-0.01	
GP-17B	11/12/2014 13:57	0.0	0.9	15.3	0.0	0	
GP-17B	12/12/2014 11:01	0.0	1.1	15.5	0.0	0.03	

**CEDAR REGIONAL HILLS LANDFILL  
COMPLIANCE LANDFILL GAS MIGRATION PROBES**

<b>Probe ID</b>	<b>Date/Time</b>	<b>CH4 %vol</b>	<b>CO2 %vol</b>	<b>O2 %vol</b>	<b>Lower Explosive Limit %LEL</b>	<b>Static Pressure in INWC</b>	<b>Comments</b>
GP-17C	1/23/2014 12:43	0.0	0.1	20.9	0.0	-1.27	
GP-17C	2/13/2014 11:50	0.0	0.1	20.6	0.0	-0.76	
GP-17C	3/11/2014 13:22	0.0	0.0	20.1	0.0	-7.39	
GP-17C	4/23/2014 15:17	0.0	0.1	20.0	0.0	1.25	
GP-17C	5/15/2014 10:51	0.0	0.0	20.8	0.0	1.19	
GP-17C	6/10/2014 10:32	0.0	0.1	21.0	0.0	-0.56	
GP-17C	7/16/2014 13:26	0.0	0.0	19.8	0.0	0.17	
GP-17C	8/19/2014 15:11	0.0	0.0	18.6	0.0	1.57	
GP-17C	9/10/2014 12:48	0.0	0.0	19.5	0.0	-2.61	
GP-17C	10/21/2014 9:06	0.0	0.1	20.8	0.0	-1.54	
GP-17C	11/12/2014 13:59	0.0	0.1	20.0	0.0	-0.38	
GP-17C	12/12/2014 11:03	0.0	0.1	20.2	0.0	-1.63	
GP-18A	1/23/2014 12:47	--	--	--	--		No Reading - Water
GP-18A	2/13/2014 11:52	--	--	--	--	1.83	No Reading - Water
GP-18A	3/11/2014 13:31	--	--	--	--	0.55	No Reading - Water
GP-18A	4/23/2014 15:19	--	--	--	--	-0.05	No Reading - Water
GP-18A	5/15/2014 10:54	--	--	--	--	0.2	No Reading - Water
GP-18A	6/10/2014 10:35	0.0	1.4	15.5	0.0	-0.32	
GP-18A	7/16/2014 13:33	--	--	--	--	0.09	No Reading - Water
GP-18A	8/19/2014 15:14	0.0	1.7	16.3	0.0	0	
GP-18A	9/10/2014 12:51	0.0	2.2	16.6	0.0	0.1	
GP-18A	10/21/2014 9:09	--	--	--	--	0	No Reading - Water
GP-18A	11/12/2014 14:01	--	--	--	--	-0.04	No Reading - Water
GP-18A	12/12/2014 11:06	--	--	--	--	-0.03	No Reading - Water
GP-18B	1/23/2014 12:50	0.0	0.4	12.2	0.0	0	
GP-18B	2/13/2014 11:54	0.0	0.4	11.8	0.0	0.16	
GP-18B	3/11/2014 13:33	0.0	0.3	12.1	0.0	0.16	
GP-18B	4/23/2014 15:21	0.0	0.3	13.3	0.0	0	
GP-18B	5/15/2014 10:56	0.0	0.2	13.2	0.0	0.13	
GP-18B	6/10/2014 10:37	0.0	0.3	14.2	0.0	0.01	
GP-18B	7/16/2014 13:35	0.0	0.2	13.2	0.0	0.02	
GP-18B	8/19/2014 15:15	0.0	0.1	13.2	0.0	0	
GP-18B	9/10/2014 12:53	0.0	0.3	14.0	0.0	0.15	
GP-18B	10/21/2014 9:11	0.0	0.5	14.5	0.0	0	
GP-18B	11/12/2014 14:03	0.0	0.3	14.6	0.0	0	
GP-18B	12/12/2014 11:08	0.0	0.4	13.7	0.0	0	
GP-18C	1/23/2014 12:51	0.0	0.1	20.5	0.0	-0.67	
GP-18C	2/13/2014 11:55	0.0	0.5	14.5	0.0	-1.9	
GP-18C	3/11/2014 13:34	0.0	0.0	20.2	0.0	-7.31	
GP-18C	4/23/2014 15:22	0.0	0.6	14.5	0.0	1.4	
GP-18C	5/15/2014 10:58	0.0	0.1	18.8	0.0	1.32	
GP-18C	6/10/2014 10:39	0.0	0.2	19.4	0.0	-0.43	
GP-18C	7/16/2014 13:37	0.0	0.1	17.5	0.0	0.39	
GP-18C	8/19/2014 15:17	0.0	0.1	14.6	0.0	1.86	
GP-18C	9/10/2014 12:54	0.0	0.0	19.4	0.0	-1.47	
GP-18C	10/21/2014 9:12	0.0	0.5	15.6	0.0	-1.53	
GP-18C	11/12/2014 14:04	0.0	0.1	20.1	0.0	-0.38	
GP-18C	12/12/2014 11:10	0.0	0.3	17.3	0.0	-1.31	

**CEDAR REGIONAL HILLS LANDFILL  
COMPLIANCE LANDFILL GAS MIGRATION PROBES**

<b>Probe ID</b>	<b>Date/Time</b>	<b>CH4 %vol</b>	<b>CO2 %vol</b>	<b>O2 %vol</b>	<b>Lower Explosive Limit %LEL</b>	<b>Static Pressure in INWC</b>	<b>Comments</b>
GP-19A	1/23/2014 12:56	--	--	--	--	-1.57	No Reading - Water
GP-19A	2/13/2014 11:59	--	--	--	--	0.98	No Reading - Water
GP-19A	3/11/2014 13:37	--	--	--	--	0.14	No Reading - Water
GP-19A	4/23/2014 15:25	0.0	0.1	20.5	0.0	0	
GP-19A	5/15/2014 11:30	--	--	--	--	0.14	No Reading - Water
GP-19A	6/10/2014 10:42	0.0	0.0	21.0	0.0	0.41	
GP-19A	7/16/2014 13:40	0.0	0.0	19.9	0.0	0.03	
GP-19A	8/19/2014 15:20	0.0	0.8	18.1	0.0	0	
GP-19A	9/10/2014 12:58	0.0	1.1	18.4	0.0	0.01	
GP-19A	10/21/2014 9:15	0.0	0.1	20.8	0.0	0	
GP-19A	11/12/2014 14:07	0.0	0.0	20.3	0.0	0	
GP-19A	12/12/2014 11:13	0.0	0.0	20.5	0.0	0	
GP-19B	1/23/2014 12:57	0.0	0.7	15.6	0.0	0.06	
GP-19B	2/13/2014 12:00	0.0	0.7	14.9	0.0	0.31	
GP-19B	3/11/2014 13:39	0.0	0.5	15.1	0.0	0.29	
GP-19B	4/23/2014 15:26	0.0	0.6	15.3	0.0	0	
GP-19B	5/15/2014 11:31	0.0	0.5	15.6	0.0	0.26	
GP-19B	6/10/2014 10:45	0.0	0.6	16.1	0.0	-0.54	
GP-19B	7/16/2014 13:42	0.0	0.4	15.8	0.0	0.04	
GP-19B	8/19/2014 15:21	0.0	0.3	15.4	0.0	0	
GP-19B	9/10/2014 13:00	0.0	0.5	15.5	0.0	0.1	
GP-19B	10/21/2014 9:17	0.0	0.7	16.3	0.0	0	
GP-19B	11/12/2014 14:09	0.0	0.6	16.1	0.0	0.01	
GP-19B	12/12/2014 11:14	0.0	0.7	15.9	0.0	0	
GP-19C	1/23/2014 13:01	0.0	0.1	21.0	0.0	-0.02	
GP-19C	2/13/2014 12:02	0.0	0.1	20.5	0.0	-0.06	
GP-19C	3/11/2014 13:40	0.0	0.0	20.4	0.0	-0.64	
GP-19C	4/23/2014 15:28	0.0	0.1	20.4	0.0	0.1	
GP-19C	5/15/2014 11:33	0.0	0.0	20.8	0.0	0.09	
GP-19C	6/10/2014 10:46	0.0	0.0	21.0	0.0	0.26	
GP-19C	7/16/2014 13:44	0.0	0.0	19.9	0.0	0.06	
GP-19C	8/19/2014 15:23	0.0	0.0	19.3	0.0	0.15	
GP-19C	9/10/2014 13:01	0.0	0.0	19.6	0.0	-0.09	
GP-19C	10/21/2014 9:18	0.0	0.1	20.9	0.0	-0.09	
GP-19C	11/12/2014 14:10	0.0	0.1	20.3	0.0	-0.02	
GP-19C	12/12/2014 11:16	0.0	0.1	20.5	0.0	-0.06	
GP-20A	1/23/2014 13:05	0.0	0.1	21.0	0.0	-0.6	
GP-20A	2/13/2014 12:06	0.0	0.1	20.4	0.0	1.03	
GP-20A	3/11/2014 13:44	0.0	0.0	20.5	0.0	0.89	
GP-20A	4/23/2014 15:31	0.0	0.0	20.6	0.0	0	
GP-20A	5/15/2014 11:04	0.0	0.0	20.9	0.0	0.07	
GP-20A	6/10/2014 10:50	0.0	0.0	21.0	0.0	0.16	
GP-20A	7/16/2014 13:47	0.0	1.1	18.5	0.0	0.12	
GP-20A	8/19/2014 15:26	0.0	1.1	18.3	0.0	0	
GP-20A	9/10/2014 13:05	0.0	0.9	19.0	0.0	0.15	
GP-20A	10/21/2014 9:21	0.0	0.9	20.3	0.0	0	
GP-20A	11/12/2014 14:15	0.0	0.1	20.5	0.0	0	
GP-20A	12/12/2014 11:19	0.0	0.0	20.5	0.0	0.1	



**CEDAR REGIONAL HILLS LANDFILL  
COMPLIANCE LANDFILL GAS MIGRATION PROBES**

<b>Probe ID</b>	<b>Date/Time</b>	<b>CH4 %vol</b>	<b>CO2 %vol</b>	<b>O2 %vol</b>	<b>Lower Explosive Limit %LEL</b>	<b>Static Pressure in INWC</b>	<b>Comments</b>
GP-20B	1/23/2014 13:07	0.0	0.3	19.9	0.0	0.01	
GP-20B	2/13/2014 12:07	0.0	0.3	10.7	0.0	0.26	
GP-20B	3/11/2014 13:45	0.0	0.1	19.6	0.0	-0.03	
GP-20B	4/23/2014 15:32	0.0	0.3	15.1	0.0	0.14	
GP-20B	5/15/2014 11:05	0.0	0.1	19.3	0.0	0.16	
GP-20B	6/10/2014 10:52	0.0	0.3	17.6	0.0	0.13	
GP-20B	7/16/2014 13:48	0.0	0.2	16.9	0.0	0.23	
GP-20B	8/19/2014 15:27	0.0	0.1	16.3	0.0	0	
GP-20B	9/10/2014 13:06	0.0	0.2	18.3	0.0	0.1	
GP-20B	10/21/2014 9:23	0.0	0.3	13.5	0.0	0	
GP-20B	11/12/2014 14:16	0.0	0.2	19.9	0.0	-0.01	
GP-20B	12/12/2014 11:21	0.0	0.3	11.3	0.0	0	
GP-20C	1/23/2014 13:10	0.0	0.2	5.6	0.0	0.03	
GP-20C	2/13/2014 12:09	0.0	0.1	19.3	0.0	0.44	
GP-20C	3/11/2014 13:47	0.0	0.2	5.8	0.0	0.19	
GP-20C	4/23/2014 15:33	0.0	0.3	18.9	0.0	0.19	
GP-20C	5/15/2014 11:07	0.0	0.1	5.3	0.0	0.02	
GP-20C	6/10/2014 10:53	0.0	0.2	5.3	0.0	0.57	
GP-20C	7/16/2014 13:50	0.0	0.1	6.2	0.0	0.23	
GP-20C	8/19/2014 15:29	0.0	0.0	6.4	0.0	0.03	
GP-20C	9/10/2014 13:08	0.0	0.1	5.9	0.0	-0.05	
GP-20C	10/21/2014 9:25	0.0	0.2	4.0	0.0	0.06	
GP-20C	11/12/2014 14:18	0.0	0.2	9.2	0.0	-0.05	
GP-20C	12/12/2014 11:23	0.0	0.1	20.4	0.0	0	
GP-21A	1/23/2014 13:13	0.0	0.1	21.0	0.0	-0.01	
GP-21A	2/13/2014 12:12	0.0	0.1	20.4	0.0	0.05	
GP-21A	3/11/2014 13:51					-0.11	
GP-21A	4/23/2014 15:36	0.0	0.1	20.5	0.0	1.98	
GP-21A	5/15/2014 11:12	0.0	0.0	20.4	0.0	-3.56	
GP-21A	6/10/2014 10:57	0.0	0.1	21.0	0.0	-0.38	
GP-21A	7/16/2014 13:56	0.0	0.0	19.8	0.0	-0.53	
GP-21A	8/19/2014 15:32	0.0	1.1	17.0	0.0	0	
GP-21A	9/10/2014 13:32	0.0	1.4	17.5	0.0	0.1	
GP-21A	10/21/2014 9:28	0.0	1.6	18.0	0.0	0.02	
GP-21A	11/12/2014 14:20	0.0	0.7	17.7	0.0	-0.2	
GP-21A	12/12/2014 11:26	0.0	0.0	20.5	0.0	-0.02	
GP-21B	1/23/2014 13:15	0.0	0.1	8.7	0.0	0.06	
GP-21B	2/13/2014 12:13	0.0	0.1	8.4	0.0	0.17	
GP-21B	3/11/2014 13:53	0.0	0.1	9.2	0.0	0.11	
GP-21B	4/23/2014 15:37	0.0	0.1	8.5	0.0	0	
GP-21B	5/15/2014 11:13	0.0	0.0	8.5	0.0	0.12	
GP-21B	6/10/2014 10:58	0.0	0.1	9.1	0.0	0.4	
GP-21B	7/16/2014 13:57	0.0	0.0	9.0	0.0	0.37	
GP-21B	8/19/2014 15:33	0.0	0.0	8.7	0.0	0	
GP-21B	9/10/2014 13:33	0.0	0.1	9.0	0.0	0.1	
GP-21B	10/21/2014 9:29	0.0	0.2	9.4	0.0	0	
GP-21B	11/12/2014 14:23	0.0	0.1	9.1	0.0	0	
GP-21B	12/12/2014 11:28	0.0	0.1	8.8	0.0	0.01	

**CEDAR REGIONAL HILLS LANDFILL  
COMPLIANCE LANDFILL GAS MIGRATION PROBES**

<b>Probe ID</b>	<b>Date/Time</b>	<b>CH4 %vol</b>	<b>CO2 %vol</b>	<b>O2 %vol</b>	<b>Lower Explosive Limit %LEL</b>	<b>Static Pressure in INWC</b>	<b>Comments</b>
GP-21C	1/23/2014 13:17	0.0	0.1	21.0	0.0	-0.01	
GP-21C	2/13/2014 12:14	0.0	0.1	12.9	0.0	1.9	
GP-21C	3/11/2014 13:54	0.0	0.2	9.9	0.0	0.72	
GP-21C	4/23/2014 15:38					0	
GP-21C	5/15/2014 11:14	0.0	0.0	8.8	0.0	0.35	
GP-21C	6/10/2014 10:59	0.0	0.1	13.6	0.0	1.18	
GP-21C	7/16/2014 13:58					0.46	
GP-21C	8/19/2014 15:34	0.0	0.0	0.0	0.0	0	
GP-21C	9/10/2014 13:34	0.0	0.1	12.1	0.0	0.08	
GP-21C	10/21/2014 9:31	0.0	0.0	0.0	0.0	0.48	
GP-21C	11/12/2014 14:24	0.0	0.1	20.3	0.0	-0.1	
GP-21C	12/12/2014 11:29	0.0	0.1	9.2	0.0	-0.17	
GP-22A	1/23/2014 13:22	0.0	0.6	20.5	0.0	-10.54	
GP-22A	2/13/2014 12:19	0.0	0.4	20.1	0.0	9.35	
GP-22A	3/11/2014 13:58	--	--	--	--	0.94	No Reading - Water
GP-22A	4/23/2014 15:42	0.0	0.6	19.8	0.0	8.57	
GP-22A	5/15/2014 11:20	0.0	0.2	20.3	0.0	-8.8	
GP-22A	6/10/2014 11:03	0.0	2.3	12.0	0.0	0.2	
GP-22A	7/16/2014 14:02	0.0	2.8	11.9	0.0	0.19	
GP-22A	8/19/2014 15:38	0.0	3.0	14.3	0.0	0	
GP-22A	9/10/2014 13:46	0.0	3.8	14.5	0.0	0.21	
GP-22A	10/21/2014 9:36	0.0	1.0	19.0	0.0	6.83	
GP-22A	11/12/2014 14:28	0.0	1.2	18.3	0.0	-0.55	Water at 30 Seconds
GP-22A	12/12/2014 11:33	0.0	0.6	19.6	0.0	2.03	
GP-22C	1/23/2014 13:24	0.0	0.8	12.2	0.0	-0.83	
GP-22C	2/13/2014 12:20	0.0	0.8	11.4	0.0	-1.78	
GP-22C	3/11/2014 14:00	0.0	0.7	10.8	0.0	-6.62	
GP-22C	4/23/2014 15:43	0.0	1.7	9.1	0.0	1.72	
GP-22C	5/15/2014 11:22	0.0	1.7	8.7	0.0	1.6	
GP-22C	6/10/2014 11:05	0.0	2.3	7.9	0.0	0.14	
GP-22C	7/16/2014 14:04	1.4	2.5	6.4	28.0	0.72	
GP-22C	8/19/2014 15:39	0.0	2.5	5.8	0.0	2.14	
GP-22C	9/10/2014 13:48	0.0	2.9	5.5	0.0	-1.02	
GP-22C	10/21/2014 9:37	0.0	3.6	4.9	0.0	-1.4	
GP-22C	11/12/2014 14:29	0.0	3.1	5.3	0.0	-0.07	
GP-22C	12/12/2014 11:35	0.0	2.9	5.4	0.0	0.71	
GP-23A	1/23/2014 13:30	0.0	0.1	21.0	0.0	-2.19	
GP-23A	2/13/2014 13:06	--	--	--	--	0.01	No Reading - Water
GP-23A	3/11/2014 14:04	0.0	0.0	20.5	0.0	0	
GP-23A	4/23/2014 15:47	--	--	--	--	0	No Reading - Water
GP-23A	5/15/2014 11:40	--	--	--	--	0.11	No Reading - Water
GP-23A	6/10/2014 11:10	--	--	--	--	0.13	No Reading - Water
GP-23A	7/16/2014 14:09	--	--	--	--	0	No Reading - Water
GP-23A	8/21/2014 8:37	--	--	--	--	0	No Reading - Water
GP-23A	9/10/2014 14:03	0.0	0.0	19.5	0.0	0	
GP-23A	10/21/2014 9:44	--	--	--	--	0	No Reading - Water
GP-23A	11/12/2014 14:34	0.0	0.1	20.4	0.0	0	
GP-23A	12/12/2014 11:39	--	--	--	--	0.12	No Reading - Water

**CEDAR REGIONAL HILLS LANDFILL  
COMPLIANCE LANDFILL GAS MIGRATION PROBES**

<b>Probe ID</b>	<b>Date/Time</b>	<b>CH4 %vol</b>	<b>CO2 %vol</b>	<b>O2 %vol</b>	<b>Lower Explosive Limit %LEL</b>	<b>Static Pressure in INWC</b>	<b>Comments</b>
GP-23B	1/23/2014 13:32	0.0	0.1	21.0	0.0	0.05	
GP-23B	2/13/2014 13:07	0.0	0.1	20.0	0.0	0.29	
GP-23B	3/11/2014 14:06	0.0	0.0	20.6	0.0	-1.14	
GP-23B	4/23/2014 15:48	0.0	0.1	20.6	0.0	0	
GP-23B	5/15/2014 11:42	0.0	0.0	20.9	0.0	0.06	
GP-23B	6/10/2014 11:11	0.0	0.0	21.0	0.0	0.14	
GP-23B	7/16/2014 14:12	0.0	0.0	19.4	0.0	0.12	
GP-23B	8/21/2014 8:38	0.0	0.0	19.3	0.0	0	
GP-23B	9/10/2014 14:04	0.0	0.0	19.6	0.0	0.21	
GP-23B	10/21/2014 9:48	0.0	0.1	20.9	0.0	0	
GP-23B	11/12/2014 14:35	0.0	0.1	20.5	0.0	0	
GP-23B	12/12/2014 11:41	0.0	0.0	20.5	0.0	0	
GP-23C	1/23/2014 13:34	0.0	0.1	21.0	0.0	-1.36	
GP-23C	2/13/2014 13:09	0.0	0.0	20.1	0.0	0	
GP-23C	3/11/2014 14:07	0.0	0.0	20.6	0.0	0	
GP-23C	4/23/2014 15:50	0.0	0.0	20.7	0.0	0	
GP-23C	5/15/2014 11:43	0.0	0.0	20.8	0.0	0.12	
GP-23C	6/10/2014 11:13	0.0	0.0	21.0	0.0	0.13	
GP-23C	7/16/2014 14:13	0.0	0.0	19.3	0.0	0.12	
GP-23C	8/21/2014 8:40	0.0	0.0	19.2	0.0	0	
GP-23C	9/10/2014 14:06	0.0	0.0	19.6	0.0	0	
GP-23C	10/21/2014 9:51	0.0	0.1	20.9	0.0	0	
GP-23C	11/12/2014 14:37	0.0	0.1	20.5	0.0	0	
GP-23C	12/12/2014 11:43	0.0	0.0	20.5	0.0	-0.34	
GP-24A	1/23/2014 13:38	0.0	4.2	11.2	0.0	0.07	
GP-24A	2/13/2014 13:12	0.0	3.9	9.9	0.0	0.15	
GP-24A	3/11/2014 14:15	0.0	3.2	11.7	0.0	0.12	
GP-24A	4/23/2014 15:53	0.0	4.1	8.8	0.0	0	
GP-24A	5/15/2014 11:47	0.0	3.4	10.0	0.0	0.12	
GP-24A	6/10/2014 12:20	0.0	5.2	11.1	0.0	0.15	
GP-24A	7/16/2014 14:16	0.0	5.7	12.6	0.0	0.11	
GP-24A	8/21/2014 9:08	0.0	5.9	14.0	0.0	0	
GP-24A	9/10/2014 14:20	0.0	5.4	13.9	0.0	0	
GP-24A	10/21/2014 9:59	0.0	4.8	15.9	0.0	0	
GP-24A	11/12/2014 14:40	0.0	4.0	12.7	0.0	0	
GP-24A	12/12/2014 11:47	0.0	4.5	9.4	0.0	0.01	
GP-24B	1/23/2014 13:40	0.0	1.0	18.9	0.0	0.06	
GP-24B	2/13/2014 13:14	0.0	0.9	18.1	0.0	0.17	
GP-24B	3/11/2014 14:17	0.0	2.1	14.0	0.0	0	
GP-24B	4/23/2014 15:54	0.0	2.4	12.5	0.0	0	
GP-24B	5/15/2014 11:48	0.0	1.4	15.3	0.0	0.06	
GP-24B	6/10/2014 12:22	0.0	0.8	18.7	0.0	0.19	
GP-24B	7/16/2014 14:18	0.0	0.5	18.9	0.0	0.23	
GP-24B	8/21/2014 9:09	0.0	0.1	19.2	0.0	-0.37	
GP-24B	9/10/2014 14:21	0.0	0.2	19.1	0.0	-0.31	
GP-24B	10/21/2014 10:00	0.0	0.7	20.2	0.0	-0.46	
GP-24B	11/12/2014 14:42	0.0	2.4	17.8	0.0	0	
GP-24B	12/12/2014 11:48	0.0	3.0	14.1	0.0	0.08	

**CEDAR REGIONAL HILLS LANDFILL  
COMPLIANCE LANDFILL GAS MIGRATION PROBES**

<b>Probe ID</b>	<b>Date/Time</b>	<b>CH4 %vol</b>	<b>CO2 %vol</b>	<b>O2 %vol</b>	<b>Lower Explosive Limit %LEL</b>	<b>Static Pressure in INWC</b>	<b>Comments</b>
GP-025	1/23/2014 13:43	0.0	3.5	13.7	0.0	0	
GP-025	2/13/2014 13:17	0.0	2.8	14.1	0.0	0.05	
GP-025	3/11/2014 14:24	0.0	0.1	20.3	0.0	3.58	
GP-025	4/23/2014 15:56	0.0	3.1	11.1	0.0	0	
GP-025	5/15/2014 11:51	0.0	3.4	10.7	0.0	0.09	
GP-025	6/10/2014 12:16	0.0	3.7	14.7	0.0	0.16	
GP-025	7/16/2014 14:21	0.0	3.1	16.2	0.0	0.22	
GP-025	8/21/2014 9:13	0.0	3.4	17.0	0.0	-0.01	
GP-025	9/10/2014 14:27	0.0	3.1	16.9	0.0	0.01	
GP-025	10/21/2014 10:03	0.0	4.0	16.6	0.0	-0.01	
GP-025	11/12/2014 14:44	0.0	5.2	11.2	0.0	0	
GP-025	12/12/2014 11:51	0.0	4.1	10.8	0.0	0.01	
GP-026	1/23/2014 13:46	0.0	1.1	19.8	0.0	0.09	
GP-026	2/13/2014 13:20	0.0	1.2	17.1	0.0	0.1	
GP-026	3/11/2014 14:32	0.0	1.1	17.3	0.0	-0.01	
GP-026	4/23/2014 15:59	0.0	1.2	17.1	0.0	0.02	
GP-026	5/15/2014 11:55	0.0	0.7	19.5	0.0	0.77	
GP-026	6/10/2014 12:25	0.0	0.7	19.9	0.0	0.25	
GP-026	7/16/2014 14:25	0.0	0.4	18.7	0.0	0.21	
GP-026	8/21/2014 9:16	0.0	0.3	19.1	0.0	-0.85	
GP-026	9/10/2014 14:30	0.0	0.4	19.1	0.0	-0.5	
GP-026	10/21/2014 10:07	0.0	0.7	19.9	0.0	-1.11	
GP-026	11/12/2014 14:47	0.0	1.0	18.9	0.0	0	
GP-026	12/12/2014 11:54	0.0	1.2	18.2	0.0	-0.1	
GP-027	1/23/2014 13:51	0.0	8.9	7.9	0.0	0.04	
GP-027	2/13/2014 13:23	0.0	8.2	8.1	0.0	0.17	
GP-027	3/11/2014 14:35	0.0	7.3	8.1	0.0	0.12	
GP-027	4/23/2014 16:02	0.0	7.3	8.5	0.0	-0.01	
GP-027	5/15/2014 12:26	0.0	7.6	7.2	0.0	0.07	
GP-027	6/10/2014 12:29	0.0	9.3	7.4	0.0	0.02	
GP-027	7/16/2014 14:29	0.0	9.2	7.3	0.0	0.19	
GP-027	8/21/2014 9:20	0.0	11.1	7.4	0.0	0	
GP-027	9/10/2014 14:34	0.0	11.4	6.9	0.0	0.1	
GP-027	10/21/2014 10:10	0.0	11.4	6.7	0.0	0	
GP-027	11/12/2014 14:52	0.0	10.9	6.0	0.0	0	
GP-027	12/12/2014 11:58	0.0	9.3	6.9	0.0	0	
GP-29A	1/23/2014 13:57	0.0	0.7	20.4	0.0	0.02	
GP-29A	2/13/2014 13:27	0.0	0.6	19.8	0.0	0.16	
GP-29A	3/11/2014 14:40	0.0	0.5	19.9	0.0	-0.01	
GP-29A	4/23/2014 16:11	0.0	1.6	18.8	0.0	0	
GP-29A	5/15/2014 12:31	0.0	0.5	19.8	0.0	0.05	
GP-29A	6/10/2014 12:34	0.0	0.7	20.2	0.0	0.2	
GP-29A	7/16/2014 14:35	0.0	0.6	18.7	0.0	0.08	
GP-29A	8/21/2014 9:26	0.0	0.8	18.7	0.0	0	
GP-29A	9/10/2014 14:39	0.0	0.9	18.6	0.0	0	
GP-29A	10/21/2014 10:16	0.0	0.8	20.0	0.0	0	
GP-29A	11/12/2014 14:56	0.0	1.6	19.0	0.0	0	
GP-29A	12/12/2014 12:04	0.0	0.5	20.1	0.0	0	

**CEDAR REGIONAL HILLS LANDFILL  
COMPLIANCE LANDFILL GAS MIGRATION PROBES**

<b>Probe ID</b>	<b>Date/Time</b>	<b>CH4 %vol</b>	<b>CO2 %vol</b>	<b>O2 %vol</b>	<b>Lower Explosive Limit %LEL</b>	<b>Static Pressure in INWC</b>	<b>Comments</b>
GP-29B	1/23/2014 14:00	0.0	0.7	21.0	0.0	-1.94	
GP-29B	2/13/2014 13:29	0.0	0.7	20.0	0.0	-1.08	
GP-29B	3/11/2014 14:42	0.0	0.1	20.5	0.0	3.12	
GP-29B	4/23/2014 16:12	0.0	0.8	20.2	0.0	0	
GP-29B	5/15/2014 12:32	0.0	0.6	19.9	0.0	0.11	
GP-29B	6/10/2014 12:36	0.0	0.7	20.5	0.0	0.16	
GP-29B	7/16/2014 14:37	0.0	0.4	19.1	0.0	0.08	
GP-29B	8/21/2014 9:27	0.0	0.4	18.9	0.0	-0.01	
GP-29B	9/10/2014 14:40	0.0	0.2	19.2	0.0	-0.04	
GP-29B	10/21/2014 10:18	0.0	0.6	20.0	0.0	-0.03	
GP-29B	11/12/2014 14:58	0.0	0.4	20.3	0.0	0	
GP-29B	12/12/2014 12:06	0.0	0.5	20.3	0.0	0	
GP-30A	1/23/2014 14:10	0.0	2.3	18.7	0.0	0.45	
GP-30A	2/13/2014 13:36	0.0	2.2	17.9	0.0	0.77	
GP-30A	3/11/2014 15:12	0.0	0.7	17.4	0.0	0.17	
GP-30A	4/23/2014 7:05	0.0	2.2	17.2	0.0	1.9	
GP-30A	5/15/2014 12:42	0.0	2.1	17.7	0.0	0.38	
GP-30A	6/10/2014 12:45	0.0	2.8	17.9	0.0	0.33	
GP-30A	7/16/2014 15:12	0.0	2.4	17.6	0.0	0.11	
GP-30A	8/21/2014 10:30	0.0	2.4	17.6	0.0	-0.05	
GP-30A	9/10/2014 15:09	0.0	2.2	17.6	0.0	0.08	
GP-30A	10/21/2014 10:57	0.0	2.6	18.3	0.0	-0.11	
GP-30A	11/12/2014 15:06	0.0	2.7	17.6	0.0	0.15	
GP-30A	12/12/2014 13:01	0.0	2.2	18.6	0.0	-0.49	
GP-30B	1/23/2014 14:14	0.0	0.8	20.4	0.0	-0.03	
GP-30B	2/13/2014 13:38	0.0	1.1	19.4	0.0	-1.84	
GP-30B	3/11/2014 15:13	0.0	0.5	19.6	0.0	-1.47	
GP-30B	4/23/2014 7:07	0.0	1.6	17.9	0.0	-0.62	
GP-30B	5/15/2014 12:43	0.0	0.9	18.1	0.0	0.36	
GP-30B	6/10/2014 12:47	0.0	1.1	18.7	0.0	-0.65	
GP-30B	7/16/2014 15:14	0.0	1.1	18.1	0.0	0.15	
GP-30B	8/21/2014 10:32	0.0	1.2	18.4	0.0	-0.56	
GP-30B	9/10/2014 15:11	0.0	0.1	19.5	0.0	-0.03	
GP-30B	10/21/2014 10:59	0.0	0.6	20.1	0.0	-0.93	
GP-30B	11/12/2014 15:08	0.0	1.1	19.1	0.0	0.48	
GP-30B	12/12/2014 13:03	0.0	0.1	20.6	0.0	-1.84	
GP-31A	1/23/2014 14:17	0.0	1.3	20.1	0.0	13.54	
GP-31A	2/13/2014 13:40	0.0	1.1	19.4	0.0	7.12	
GP-31A	3/11/2014 15:16	--	--	--	--	1.18	No Reading - Water
GP-31A	4/23/2014 7:10	0.0	0.0	0.0	0.0	0	
GP-31A	5/15/2014 12:47	--	--	--	--	-11.14	No Reading - Water
GP-31A	6/10/2014 12:50	--	--	--	--	0.91	No Reading - Water
GP-31A	7/16/2014 15:16	0.0	8.3	7.5	0.0	-3.76	
GP-31A	8/21/2014 10:35	0.0	6.8	11.9	0.0	0	
GP-31A	9/10/2014 15:14	0.0	6.3	13.3	0.0	0.16	
GP-31A	10/21/2014 11:08	0.0	5.8	15.4	0.0	-0.01	
GP-31A	11/12/2014 15:11	0.0	6.5	14.0	0.0	0	
GP-31A	12/12/2014 13:06	0.0	4.9	16.1	0.0	0.08	

**CEDAR REGIONAL HILLS LANDFILL  
COMPLIANCE LANDFILL GAS MIGRATION PROBES**

<b>Probe ID</b>	<b>Date/Time</b>	<b>CH4 %vol</b>	<b>CO2 %vol</b>	<b>O2 %vol</b>	<b>Lower Explosive Limit %LEL</b>	<b>Static Pressure in INWC</b>	<b>Comments</b>
GP-31B	1/23/2014 14:20	0.0	0.3	14.6	0.0	-0.03	
GP-31B	2/13/2014 13:41	0.0	0.3	14.4	0.0	-0.24	
GP-31B	3/11/2014 15:18	0.0	0.2	14.3	0.0	0.69	
GP-31B	4/23/2014 7:11	0.0	0.3	16.7	0.0	-0.05	
GP-31B	5/15/2014 12:49	0.0	0.1	16.6	0.0	1.58	
GP-31B	6/10/2014 12:52	0.0	0.2	19.1	0.0	-0.7	
GP-31B	7/16/2014 15:18	0.0	0.2	16.7	0.0	0.24	
GP-31B	8/21/2014 10:36	0.0	0.2	16.8	0.0	-0.57	
GP-31B	9/10/2014 15:15	0.0	0.2	17.2	0.0	-0.29	
GP-31B	10/21/2014 11:09	0.0	0.3	17.1	0.0	-0.95	
GP-31B	11/12/2014 15:13	0.0	0.4	14.5	0.0	0.99	
GP-31B	12/12/2014 13:08	0.0	0.3	16.6	0.0	-1.57	
GP-31C	1/23/2014 14:22	0.0	2.3	9.5	0.0	-0.67	
GP-31C	2/13/2014 13:43	0.0	2.1	10.5	0.0	1.51	
GP-31C	3/11/2014 15:19	0.0	0.0	20.0	0.0	-1.07	
GP-31C	4/23/2014 7:13	0.0	1.3	15.6	0.0	0	
GP-31C	5/15/2014 12:50	0.0	1.1	15.6	0.0	0.06	
GP-31C	6/10/2014 12:53	0.0	1.3	16.8	0.0	0.29	
GP-31C	7/16/2014 15:19	0.0	1.1	15.5	0.0	-0.01	
GP-31C	8/21/2014 10:38	0.0	1.3	15.3	0.0	0	
GP-31C	9/10/2014 15:17	0.0	1.2	15.5	0.0	0.05	
GP-31C	10/21/2014 11:11	0.0	1.5	16.0	0.0	0	
GP-31C	11/12/2014 15:14	0.0	1.5	15.4	0.0	-0.01	
GP-31C	12/12/2014 13:09	0.0	1.6	15.6	0.0	0	
GP-32A	1/23/2014 14:25	0.0	0.5	20.9	0.0	0.03	
GP-32A	2/13/2014 13:45	0.0	0.6	19.8	0.0	0.17	
GP-32A	3/11/2014 15:22	0.0	0.5	18.5	0.0	0.1	
GP-32A	4/23/2014 7:17	0.0	0.9	18.7	0.0	0	
GP-32A	5/15/2014 12:53	0.0	0.8	17.7	0.0	0.13	
GP-32A	6/10/2014 12:56	0.0	0.0	21.0	0.0	0.35	
GP-32A	7/16/2014 15:22	0.0	0.1	19.8	0.0	0	
GP-32A	8/21/2014 10:41	0.0	0.0	19.6	0.0	0	
GP-32A	9/10/2014 15:20	0.0	0.2	19.4	0.0	0.13	
GP-32A	10/21/2014 11:14	0.0	0.1	20.6	0.0	-0.02	
GP-32A	11/12/2014 15:17	0.0	0.7	18.9	0.0	0.02	
GP-32A	12/12/2014 13:12	0.0	0.1	20.9	0.0	0.09	
GP-32B	1/23/2014 14:27	0.0	0.2	21.0	0.0	0.01	
GP-32B	2/13/2014 13:47	0.0	0.2	20.4	0.0	0.19	
GP-32B	3/11/2014 15:24	0.0	0.1	20.0	0.0	0.17	
GP-32B	4/23/2014 7:18	0.0	0.2	20.4	0.0	0	
GP-32B	5/15/2014 12:55	0.0	0.1	20.3	0.0	0.11	
GP-32B	6/10/2014 12:58	0.0	0.3	20.8	0.0	0.21	
GP-32B	7/16/2014 15:24	0.0	0.0	19.8	0.0	0.16	
GP-32B	8/21/2014 10:43	0.0	0.1	19.5	0.0	0	
GP-32B	9/10/2014 15:21	0.0	0.1	19.5	0.0	0.14	
GP-32B	10/21/2014 11:15	0.0	0.2	20.6	0.0	0.01	
GP-32B	11/12/2014 15:18	0.0	0.3	19.9	0.0	0	
GP-32B	12/12/2014 13:13	0.0	0.5	20.4	0.0	0.03	

**CEDAR REGIONAL HILLS LANDFILL  
COMPLIANCE LANDFILL GAS MIGRATION PROBES**

<b>Probe ID</b>	<b>Date/Time</b>	<b>CH4 %vol</b>	<b>CO2 %vol</b>	<b>O2 %vol</b>	<b>Lower Explosive Limit %LEL</b>	<b>Static Pressure in INWC</b>	<b>Comments</b>
GP-32C	1/23/2014 14:29	0.0	0.3	20.8	0.0	-0.01	
GP-32C	2/13/2014 13:48	0.0	0.3	20.4	0.0	0.19	
GP-32C	3/11/2014 15:25	0.0	0.2	20.1	0.0	0.17	
GP-32C	4/23/2014 7:20	0.0	0.3	20.3	0.0	0	
GP-32C	5/15/2014 12:56	0.0	0.1	20.3	0.0	0.13	
GP-32C	6/10/2014 12:59	0.0	0.2	20.9	0.0	0.19	
GP-32C	7/16/2014 15:25	0.0	0.1	19.5	0.0	0.04	
GP-32C	8/21/2014 10:45	0.0	0.1	19.5	0.0	0	
GP-32C	9/10/2014 15:23	0.0	0.1	19.5	0.0	-1.31	
GP-32C	10/21/2014 11:17	0.0	0.2	20.5	0.0	0.03	
GP-32C	11/12/2014 15:20	0.0	0.3	20.0	0.0	0	
GP-32C	12/12/2014 13:15	0.0	0.3	20.7	0.0	0.04	
GP-33A	1/23/2014 14:32	0.0	0.1	21.0	0.0	0.11	
GP-33A	2/13/2014 13:51	0.0	0.1	20.6	0.0	0.06	
GP-33A	3/11/2014 15:28	0.0	0.0	20.2	0.0	0.14	
GP-33A	4/23/2014 7:23	0.0	0.1	20.6	0.0	0	
GP-33A	5/15/2014 12:59	0.0	0.0	20.4	0.0	0.12	
GP-33A	6/10/2014 13:02	0.0	2.2	17.5	0.0	0.25	
GP-33A	7/16/2014 15:28	0.0	2.7	16.4	0.0	0	
GP-33A	8/21/2014 10:53	0.0	3.2	16.3	0.0	0	
GP-33A	9/10/2014 15:26	0.0	3.1	16.4	0.0	0.11	
GP-33A	10/21/2014 11:20	0.0	3.1	17.4	0.0	0	
GP-33A	11/12/2014 15:23	0.0	0.1	20.3	0.0	0	
GP-33A	12/12/2014 13:17	0.0	0.1	20.9	0.0	0.03	
GP-33B	1/23/2014 14:33	0.0	0.1	21.0	0.0	0	
GP-33B	2/13/2014 13:52	0.0	0.0	20.6	0.0	0.1	
GP-33B	3/11/2014 15:30	0.0	0.0	20.2	0.0	0	
GP-33B	4/23/2014 7:25	0.0	0.1	20.7	0.0	0	
GP-33B	5/15/2014 13:00	0.0	0.0	20.5	0.0	0.11	
GP-33B	6/10/2014 13:04	0.0	0.0	21.0	0.0	0.38	
GP-33B	7/16/2014 15:30	0.0	0.0	19.6	0.0	0.1	
GP-33B	8/21/2014 10:54	0.0	0.6	17.4	0.0	0	
GP-33B	9/10/2014 15:27	0.0	0.6	18.1	0.0	0.17	
GP-33B	10/21/2014 11:21	0.0	0.8	18.6	0.0	0	
GP-33B	11/12/2014 15:24	0.0	0.1	20.2	0.0	0.36	
GP-33B	12/12/2014 13:19	0.0	0.0	21.0	0.0	-0.13	
GP-33C	1/23/2014 14:35	0.0	0.1	21.0	0.0	-0.8	
GP-33C	2/13/2014 13:54	0.0	0.0	20.7	0.0	-1.64	
GP-33C	3/11/2014 15:32	0.0	0.0	20.3	0.0	-3.06	
GP-33C	4/23/2014 7:26	0.0	0.1	20.6	0.0	-1.04	
GP-33C	5/15/2014 13:02	0.0	0.0	20.4	0.0	0.04	
GP-33C	6/10/2014 13:05	0.0	0.0	21.0	0.0	-1.21	
GP-33C	7/16/2014 15:31	0.0	0.0	19.7	0.0	-0.18	
GP-33C	8/21/2014 10:56	0.0	0.0	19.6	0.0	-1.16	
GP-33C	9/10/2014 15:29	0.0	0.0	19.6	0.0	-0.98	
GP-33C	10/21/2014 11:23	0.0	0.1	20.8	0.0	-1.57	
GP-33C	11/12/2014 15:26	0.0	0.1	20.4	0.0	0.04	
GP-33C	12/12/2014 13:21	0.0	0.0	21.0	0.0	-2.85	

**CEDAR REGIONAL HILLS LANDFILL  
COMPLIANCE LANDFILL GAS MIGRATION PROBES**

<b>Probe ID</b>	<b>Date/Time</b>	<b>CH4 %vol</b>	<b>CO2 %vol</b>	<b>O2 %vol</b>	<b>Lower Explosive Limit %LEL</b>	<b>Static Pressure in INWC</b>	<b>Comments</b>
GP-34A	1/23/2014 14:38	0.0	0.1	21.0	0.0	-3.46	
GP-34A	2/13/2014 13:56	--	--	--	--	9.6	No Reading - Water
GP-34A	3/11/2014 15:35	--	--	--	--	-0.06	No Reading - Water
GP-34A	4/23/2014 7:29	--	--	--	--	-0.56	No Reading - Water
GP-34A	5/15/2014 13:04	--	--	--	--	-0.19	No Reading - Water
GP-34A	6/10/2014 13:10	--	--	--	--	0.9	No Reading - Water
GP-34A	7/16/2014 15:35	--	--	--	--	0	No Reading - Water
GP-34A	8/21/2014 10:59	0.0	9.4	7.8	0.0	0	
GP-34A	9/10/2014 15:32	0.0	8.9	9.6	0.0	0	
GP-34A	10/21/2014 11:29	0.0	8.9	10.3	0.0	0	
GP-34A	11/12/2014 15:29	0.0	4.9	14.2	0.0	8.58	
GP-34A	12/12/2014 13:24	--	--	--	--	0.11	No Reading - Water
GP-34B	1/23/2014 14:40	0.0	0.1	21.0	0.0	0.14	
GP-34B	2/13/2014 13:58	0.0	0.1	20.6	0.0	0	
GP-34B	3/11/2014 15:37	0.0	0.0	20.3	0.0	0.07	
GP-34B	4/23/2014 7:31	0.0	0.3	16.9	0.0	0	
GP-34B	5/15/2014 13:06	0.0	0.1	20.1	0.0	0.13	
GP-34B	6/10/2014 13:11	0.0	0.1	21.0	0.0	0.19	
GP-34B	7/16/2014 15:39	0.0	0.1	19.3	0.0	0.12	
GP-34B	8/21/2014 11:00	0.0	0.1	19.6	0.0	-0.04	
GP-34B	9/10/2014 15:35	0.0	8.7	9.6	0.0	0	
GP-34B	10/21/2014 11:26	0.0	0.1	20.8	0.0	0	
GP-34B	11/12/2014 15:30	0.0	0.2	20.4	0.0	0	
GP-34B	12/12/2014 13:26	0.0	0.0	20.8	0.0	-0.14	
GP-34C	1/23/2014 14:42	0.0	0.1	21.0	0.0	-0.91	
GP-34C	2/13/2014 14:00	0.0	0.0	20.7	0.0	-1.79	
GP-34C	3/11/2014 15:38	0.0	0.0	19.8	0.0	-5.76	
GP-34C	4/23/2014 7:32	0.0	0.1	5.5	0.0	0.54	
GP-34C	5/15/2014 13:08	0.0	0.0	20.0	0.0	1.22	
GP-34C	6/10/2014 13:13	0.0	0.0	20.9	0.0	-0.55	
GP-34C	7/16/2014 15:41	0.0	0.0	17.0	0.0	0.43	
GP-34C	8/21/2014 11:02	0.0	0.0	18.5	0.0	-1.25	
GP-34C	9/10/2014 15:38	0.0	0.1	18.4	0.0	-0.96	
GP-34C	10/21/2014 11:27	0.0	0.1	18.6	0.0	-1.41	
GP-34C	11/12/2014 15:32	0.0	0.1	20.5	0.0	-0.35	
GP-34C	12/12/2014 13:28	0.0	0.0	19.0	0.0	-1.92	
GP-35A	1/23/2014 14:45	0.0	0.1	21.0	0.0	0.02	
GP-35A	2/13/2014 14:02	0.0	0.0	20.7	0.0	0.12	
GP-35A	3/11/2014 15:42	0.0	0.0	20.4	0.0	0	
GP-35A	4/23/2014 7:37	0.0	0.1	20.5	0.0	0	
GP-35A	5/15/2014 13:11	0.0	0.0	20.4	0.0	0.07	
GP-35A	6/10/2014 13:16	0.0	0.1	21.0	0.0	0.17	
GP-35A	7/16/2014 15:44	0.7	7.6	5.6	14.0	0	
GP-35A	8/21/2014 11:05	0.0	5.2	15.0	0.0	0	
GP-35A	9/10/2014 15:52	0.0	5.6	14.5	0.0	0	
GP-35A	10/21/2014 11:32	0.0	5.0	16.2	0.0	0	
GP-35A	11/12/2014 15:35	0.0	0.2	20.5	0.0	0.01	
GP-35A	12/12/2014 13:31	0.0	0.1	20.7	0.0	0.08	



**CEDAR REGIONAL HILLS LANDFILL  
COMPLIANCE LANDFILL GAS MIGRATION PROBES**

<b>Probe ID</b>	<b>Date/Time</b>	<b>CH4 %vol</b>	<b>CO2 %vol</b>	<b>O2 %vol</b>	<b>Lower Explosive Limit %LEL</b>	<b>Static Pressure in INWC</b>	<b>Comments</b>
GP-35B	1/23/2014 14:46	0.0	0.1	21.0	0.0	0	
GP-35B	2/13/2014 14:04	0.0	0.0	20.7	0.0	0.15	
GP-35B	3/11/2014 15:43	0.0	0.0	20.4	0.0	0.08	
GP-35B	4/23/2014 7:38	0.0	0.1	20.8	0.0	0	
GP-35B	5/15/2014 13:12	0.0	0.0	20.4	0.0	0.06	
GP-35B	6/10/2014 13:18	0.0	0.0	21.0	0.0	0.19	
GP-35B	7/16/2014 15:46	0.0	0.0	19.6	0.0	0.23	
GP-35B	8/21/2014 11:07	0.0	0.0	19.6	0.0	0	
GP-35B	9/10/2014 15:54	0.0	0.0	19.5	0.0	0.09	
GP-35B	10/21/2014 11:33	0.0	0.1	20.7	0.0	0	
GP-35B	11/12/2014 15:36	0.0	0.1	20.4	0.0	0	
GP-35B	12/12/2014 13:32	0.0	0.0	20.9	0.0	0.03	
GP-35C	1/23/2014 14:48	0.0	0.1	21.0	0.0	-0.01	
GP-35C	2/13/2014 14:05	0.0	0.0	20.7	0.0	0	
GP-35C	3/11/2014 15:44	0.0	0.0	20.4	0.0	-0.12	
GP-35C	4/23/2014 7:40	0.0	0.1	20.4	0.0	0.03	
GP-35C	5/15/2014 13:14	0.0	0.1	20.3	0.0	0.04	
GP-35C	6/10/2014 13:19	0.0	0.1	21.0	0.0	0.03	
GP-35C	7/16/2014 15:47	0.0	0.0	19.5	0.0	-2.42	
GP-35C	8/21/2014 11:09	0.0	0.0	19.6	0.0	-0.03	
GP-35C	9/10/2014 15:55	0.0	0.0	19.5	0.0	-0.03	
GP-35C	10/21/2014 11:35	0.0	0.1	20.8	0.0	-0.03	
GP-35C	11/12/2014 15:38	0.0	0.1	20.6	0.0	-0.03	
GP-35C	12/12/2014 13:34	0.0	0.1	19.4	0.0	0	
GP-36A	1/23/2014 14:51	0.0	0.3	6.8	0.0	0.4	
GP-36A	2/13/2014 14:08	0.0	0.0	20.8	0.0	1.03	
GP-36A	3/11/2014 15:48	0.0	0.1	10.6	0.0	0.48	
GP-36A	4/23/2014 7:43	0.0	0.3	6.5	0.0	0.05	
GP-36A	5/15/2014 13:17	0.0	0.2	5.8	0.0	0.21	
GP-36A	6/10/2014 13:23	0.0	0.2	21.0	0.0	-0.05	
GP-36A	7/16/2014 15:50	0.0	0.4	19.2	0.0	0.09	
GP-36A	8/21/2014 11:11	0.0	0.6	19.2	0.0	-1.71	
GP-36A	9/10/2014 15:58	0.0	0.7	18.9	0.0	-0.44	
GP-36A	10/21/2014 11:38	0.0	0.3	20.7	0.0	-1.4	
GP-36A	11/12/2014 15:41	0.0	0.6	17.3	0.0	1.4	
GP-36A	12/12/2014 13:36	0.0	0.3	3.0	0.0	2.68	
GP-36B	1/23/2014 14:52	0.0	0.3	13.3	0.0	0.25	
GP-36B	2/13/2014 14:09	0.0	0.1	20.8	0.0	0.54	
GP-36B	3/11/2014 15:49	--	--	--	--	0.41	No Reading - Water
GP-36B	4/23/2014 7:44	--	--	--	--	0.22	No Reading - Water
GP-36B	5/15/2014 13:18	--	--	--	--	0.63	No Reading - Water
GP-36B	6/10/2014 13:25	0.0	0.0	21.0	0.0	0.14	
GP-36B	7/16/2014 15:52	0.0	2.8	14.1	0.0	0	
GP-36B	8/21/2014 11:13	0.0	4.1	16.1	0.0	0.02	
GP-36B	9/10/2014 16:00	0.0	3.8	16.4	0.0	0.39	
GP-36B	10/21/2014 11:39	0.0	3.5	17.8	0.0	0	
GP-36B	11/12/2014 15:42	0.0	3.6	14.6	0.0	0	
GP-36B	12/12/2014 13:38	0.0	0.0	20.9	0.0	0.19	

**CEDAR REGIONAL HILLS LANDFILL  
COMPLIANCE LANDFILL GAS MIGRATION PROBES**

<b>Probe ID</b>	<b>Date/Time</b>	<b>CH4 %vol</b>	<b>CO2 %vol</b>	<b>O2 %vol</b>	<b>Lower Explosive Limit %LEL</b>	<b>Static Pressure in INWC</b>	<b>Comments</b>
GP-36C	1/23/2014 14:54	0.0	0.4	8.5	0.0	-0.66	
GP-36C	2/13/2014 14:11	0.0	0.7	3.3	0.0	-1.59	
GP-36C	3/11/2014 15:50	0.0	0.3	8.5	0.0	-6.12	
GP-36C	4/23/2014 7:46	0.0	0.4	8.0	0.0	1.52	
GP-36C	5/15/2014 13:19	0.0	0.2	7.0	0.0	2.54	
GP-36C	6/10/2014 13:27	0.0	0.3	9.2	0.0	-0.06	
GP-36C	7/16/2014 15:53	0.0	0.2	6.5	0.0	0.42	
GP-36C	8/21/2014 11:15	0.0	0.3	8.2	0.0	-1.41	
GP-36C	9/10/2014 16:01	0.0	0.3	7.7	0.0	-1.7	
GP-36C	10/21/2014 11:41	0.0	0.4	7.4	0.0	-1.75	
GP-36C	11/12/2014 15:44	0.0	0.4	10.0	0.0	-0.48	
GP-36C	12/12/2014 13:40	0.0	0.3	9.8	0.0	-0.83	
GP-37A	1/23/2014 14:56	0.0	0.6	10.7	0.0	-1.4	
GP-37A	2/13/2014 14:13	--	--	--	--	-0.02	No Reading - Water
GP-37A	3/11/2014 15:53	--	--	--	--	0.8	No Reading - Water
GP-37A	4/23/2014 9:56	--	--	--	--	0.27	No Reading - Water
GP-37A	5/15/2014 13:22	--	--	--	--	0.44	No Reading - Water
GP-37A	6/10/2014 13:31	0.0	0.2	10.0	0.0	0.64	
GP-37A	7/16/2014 15:55	--	--	--	--	0.43	No Reading - Water
GP-37A	8/21/2014 11:18	0.0	1.9	15.6	0.0	0	
GP-37A	9/10/2014 16:04	0.0	1.9	15.9	0.0	0.12	
GP-37A	10/21/2014 11:47	0.0	2.1	16.7	0.0	0	
GP-37A	11/12/2014 15:45	--	--	--	--	0	No Reading - Water
GP-37A	12/12/2014 13:42	--	--	--	--	-0.04	No Reading - Water
GP-37B	1/23/2014 14:58	0.0	0.2	20.7	0.0	0.04	
GP-37B	2/13/2014 14:14	0.0	3.7	16.2	0.0	0.17	
GP-37B	3/11/2014 15:53	--	--	--	--	0.73	Blocked
GP-37B	4/23/2014 9:57	0.0	0.2	19.3	0.0	-0.91	
GP-37B	5/15/2014 13:24	0.0	0.1	18.9	0.0	-0.06	
GP-37B	6/10/2014 13:33	0.0	0.2	20.4	0.0	0.64	
GP-37B	7/16/2014 15:56	0.0	0.1	18.8	0.0	0.6	
GP-37B	8/21/2014 11:19	0.0	1.8	15.7	0.0	0.2	
GP-37B	9/10/2014 16:04	0.0	1.4	16.3	0.0	0.42	
GP-37B	10/21/2014 11:44	0.0	0.7	7.8	0.0	0.6	
GP-37B	11/12/2014 15:47	0.0	0.4	19.8	0.0	-0.19	
GP-37B	12/12/2014 13:45	0.0	0.2	20.5	0.0	0.05	
GP-37C	1/23/2014 15:00	0.0	0.6	1.9	0.0	-0.59	
GP-37C	2/13/2014 14:15	0.0	0.7	2.6	0.0	-0.45	
GP-37C	3/11/2014 15:55	0.0	0.4	4.4	0.0	-5.06	
GP-37C	4/23/2014 9:59	0.0	0.6	1.9	0.0	1.22	
GP-37C	5/15/2014 13:26	0.0	0.4	1.0	0.0	2.65	
GP-37C	6/10/2014 13:35	0.0	0.5	1.8	0.0	0.11	
GP-37C	7/16/2014 15:58	0.0	0.4	1.0	0.0	0.66	
GP-37C	8/21/2014 11:21	0.0	0.5	2.6	0.0	-1.48	
GP-37C	9/10/2014 16:06	0.0	0.4	3.2	0.0	-2.15	
GP-37C	10/21/2014 11:45	0.0	0.6	5.2	0.0	-1.69	
GP-37C	11/12/2014 15:49	0.0	0.5	9.8	0.0	-0.12	
GP-37C	12/12/2014 13:46	0.0	0.8	3.5	0.0	-2.04	

**CEDAR REGIONAL HILLS LANDFILL  
COMPLIANCE LANDFILL GAS MIGRATION PROBES**

<b>Probe ID</b>	<b>Date/Time</b>	<b>CH4 %vol</b>	<b>CO2 %vol</b>	<b>O2 %vol</b>	<b>Lower Explosive Limit %LEL</b>	<b>Static Pressure in INWC</b>	<b>Comments</b>
GP-039	1/23/2014 15:08	0.0	1.5	18.1	0.0	0	
GP-039	2/13/2014 14:21	0.0	1.4	17.7	0.0	0.82	
GP-039	3/11/2014 16:05	0.0	1.0	18.2	0.0	0.18	
GP-039	4/23/2014 10:03	0.0	1.5	16.9	0.0	0.14	
GP-039	5/15/2014 14:27	0.0	1.6	16.9	0.0	0.05	
GP-039	6/10/2014 14:11	0.0	1.8	17.3	0.0	0.16	
GP-039	7/16/2014 16:03	0.0	1.9	17.1	0.0	0.11	
GP-039	8/21/2014 11:26	0.0	1.8	17.8	0.0	-0.04	
GP-039	9/10/2014 16:11	0.0	1.6	18.0	0.0	-0.09	
GP-039	10/21/2014 11:52	0.0	1.0	18.4	0.0	-0.2	
GP-039	11/12/2014 15:53	0.0	1.1	18.8	0.0	0.14	
GP-039	12/12/2014 13:52	0.0	0.8	18.1	0.0	0.02	
GP-040	1/23/2014 15:12	0.0	0.1	19.1	0.0	-0.37	
GP-040	2/13/2014 14:29	0.0	0.1	17.6	0.0	0.13	
GP-040	3/11/2014 16:10	0.0	0.0	18.5	0.0	-0.01	
GP-040	4/23/2014 10:06	0.0	0.1	16.3	0.0	0	
GP-040	5/15/2014 13:52	0.0	0.0	15.9	0.0	0.13	
GP-040	6/10/2014 14:18	0.0	0.1	20.8	0.0	0.88	
GP-040	7/16/2014 16:07	0.0	0.0	15.7	0.0	0.01	
GP-040	8/21/2014 11:29	0.0	0.0	15.1	0.0	0	
GP-040	9/10/2014 16:14	0.0	0.0	18.7	0.0	-0.08	
GP-040	10/21/2014 11:55	0.0	0.1	20.3	0.0	-0.1	
GP-040	11/12/2014 15:56	0.0	0.1	20.5	0.0	0.01	
GP-040	12/12/2014 13:55	0.0	0.0	20.6	0.0	0.02	
GP-41A	1/23/2014 15:15	0.0	0.1	21.0	0.0	0.07	
GP-41A	2/13/2014 14:38	0.0	0.0	20.6	0.0	0.18	
GP-41A	3/11/2014 16:14	0.0	0.0	20.4	0.0	0.14	
GP-41A	4/23/2014 10:09	0.0	0.0	20.1	0.0	0	
GP-41A	5/15/2014 13:55	0.0	0.0	20.3	0.0	0.08	
GP-41A	6/10/2014 14:25	0.0	0.0	20.9	0.0	0.21	
GP-41A	7/16/2014 16:10	0.0	3.8	14.4	0.0	0.1	
GP-41A	8/21/2014 11:33	0.0	4.3	16.0	0.0	0	
GP-41A	9/10/2014 16:17	0.0	4.2	16.1	0.0	0.09	
GP-41A	10/21/2014 11:58	0.0	3.7	17.8	0.0	0	
GP-41A	11/12/2014 15:59	0.0	0.1	20.5	0.0	0	
GP-41A	12/12/2014 13:59	0.0	0.1	21.0	0.0	0	
GP-41B	1/23/2014 15:17	0.0	0.1	21.0	0.0	0.18	
GP-41B	2/13/2014 14:39	0.0	0.0	20.7	0.0	0.22	
GP-41B	3/11/2014 16:16	0.0	0.0	20.4	0.0	0.07	
GP-41B	4/23/2014 10:10	0.0	0.0	20.2	0.0	-0.02	
GP-41B	5/15/2014 13:56	0.0	0.0	20.3	0.0	0.14	
GP-41B	6/10/2014 14:27	0.0	0.0	20.9	0.0	0.45	
GP-41B	7/16/2014 16:11	0.0	0.6	5.9	0.0	0.09	
GP-41B	8/21/2014 11:34	0.0	0.7	6.4	0.0	0	
GP-41B	9/10/2014 16:19	0.0	0.7	6.6	0.0	0.08	
GP-41B	10/21/2014 12:00	0.0	0.8	6.3	0.0	-0.02	
GP-41B	11/12/2014 16:01	0.0	0.8	5.3	0.0	0	
GP-41B	12/12/2014 14:00	0.0	0.0	21.0	0.0	0	

**CEDAR REGIONAL HILLS LANDFILL  
COMPLIANCE LANDFILL GAS MIGRATION PROBES**

<b>Probe ID</b>	<b>Date/Time</b>	<b>CH4 %vol</b>	<b>CO2 %vol</b>	<b>O2 %vol</b>	<b>Lower Explosive Limit %LEL</b>	<b>Static Pressure in INWC</b>	<b>Comments</b>
GP-41C	1/23/2014 15:18	0.0	0.1	21.0	0.0	0.1	
GP-41C	2/13/2014 14:41	0.0	0.0	20.6	0.0	0.09	
GP-41C	3/11/2014 16:17	0.0	0.0	20.4	0.0	0	
GP-41C	4/23/2014 10:11	0.0	0.0	20.4	0.0	0	
GP-41C	5/15/2014 13:58	0.0	0.0	20.3	0.0	0.06	
GP-41C	6/10/2014 14:28	0.0	0.0	20.9	0.0	0.05	
GP-41C	7/16/2014 16:13	0.0	0.0	19.4	0.0	0.09	
GP-41C	8/21/2014 11:36	0.0	0.0	19.5	0.0	0	
GP-41C	9/10/2014 16:20	0.0	0.1	19.3	0.0	0	
GP-41C	10/21/2014 12:02	0.0	0.1	20.5	0.0	0	
GP-41C	11/12/2014 16:02	0.0	0.1	20.3	0.0	0	
GP-41C	12/12/2014 14:02	0.0	0.0	21.0	0.0	0.03	
GP-42A	1/23/2014 15:22	--	--	--	--		No Reading - Water
GP-42A	2/13/2014 14:48	--	--	--	--	0.83	No Reading - Water
GP-42A	3/11/2014 16:21	--	--	--	--	-3.32	No Reading - Water
GP-42A	4/23/2014 10:14	--	--	--	--	0.14	No Reading - Water
GP-42A	5/15/2014 14:01	--	--	--	--	-5.48	No Reading - Water
GP-42A	6/10/2014 14:33	--	--	--	--	0.66	No Reading - Water
GP-42A	7/16/2014 16:16	0.0	0.0	19.4	0.0	0.3	
GP-42A	8/21/2014 11:41	0.0	6.2	10.1	0.0	-0.07	
GP-42A	9/10/2014 16:24	0.0	6.4	10.2	0.0	0.24	
GP-42A	10/21/2014 12:05	0.0	0.1	20.6	0.0	-0.01	
GP-42A	11/12/2014 16:06	--	--	--	--	0	No Reading - Water
GP-42A	12/12/2014 14:05	--	--	--	--	-0.32	No Reading - Water
GP-42B	1/23/2014 15:25	0.0	0.1	20.9	0.0	0.03	
GP-42B	2/13/2014 14:49	0.1	0.1	20.6	2.0	-0.29	
GP-42B	3/11/2014 16:22	0.0	0.0	20.5	0.0	-2.14	
GP-42B	4/23/2014 10:16	0.0	0.4	16.7	0.0	0	
GP-42B	5/15/2014 14:03	0.0	0.3	18.5	0.0	1.28	
GP-42B	6/10/2014 14:35	0.0	0.5	19.3	0.0	-0.17	
GP-42B	7/16/2014 16:17	0.0	0.5	17.9	0.0	0.61	
GP-42B	8/21/2014 11:42	0.0	0.4	18.6	0.0	-0.42	
GP-42B	9/10/2014 16:25	0.0	0.1	19.0	0.0	-0.14	
GP-42B	10/21/2014 12:06	0.0	0.1	20.5	0.0	-0.79	
GP-42B	11/12/2014 16:08	0.0	0.2	20.4	0.0	0.5	
GP-42B	12/12/2014 14:07	0.0	0.0	21.0	0.0	-1.57	
GP-43A	1/23/2014 15:29	0.0	0.1	21.0	0.0	0	
GP-43A	2/13/2014 14:52	0.1	0.1	20.6	2.0	0.48	
GP-43A	3/11/2014 16:26	0.0	0.0	20.4	0.0	0.04	
GP-43A	4/23/2014 10:30	0.0	0.1	20.0	0.0	-0.24	
GP-43A	5/15/2014 14:08	0.0	0.0	20.1	0.0	0.23	
GP-43A	6/10/2014 14:42	0.0	0.0	20.9	0.0	0.47	
GP-43A	7/16/2014 16:21	0.0	0.0	19.4	0.0	0.26	
GP-43A	8/21/2014 11:46	0.0	0.0	19.5	0.0	-0.03	
GP-43A	9/10/2014 16:28	0.0	0.1	19.3	0.0	0.21	
GP-43A	10/21/2014 12:10	0.0	0.1	20.6	0.0	-0.08	
GP-43A	11/12/2014 16:12	0.0	0.1	20.5	0.0	-0.22	
GP-43A	12/12/2014 14:11	0.0	0.0	21.0	0.0	-0.04	

**CEDAR REGIONAL HILLS LANDFILL  
COMPLIANCE LANDFILL GAS MIGRATION PROBES**

<b>Probe ID</b>	<b>Date/Time</b>	<b>CH4 %vol</b>	<b>CO2 %vol</b>	<b>O2 %vol</b>	<b>Lower Explosive Limit %LEL</b>	<b>Static Pressure in INWC</b>	<b>Comments</b>
GP-43B	1/23/2014 15:31	0.0	0.1	21.0	0.0	0.01	
GP-43B	2/13/2014 14:54	0.1	0.0	20.6	2.0	0.19	
GP-43B	3/11/2014 16:28	0.0	0.0	20.5	0.0	0	
GP-43B	4/23/2014 10:31	0.0	0.0	20.4	0.0	-0.03	
GP-43B	5/15/2014 14:09	0.0	0.0	20.1	0.0	0.12	
GP-43B	6/10/2014 14:44	0.0	0.0	20.9	0.0	-0.01	
GP-43B	7/16/2014 16:23	0.0	0.0	19.4	0.0	0.08	
GP-43B	8/21/2014 11:48	0.0	0.0	19.5	0.0	0	
GP-43B	9/10/2014 16:30	0.0	0.0	19.4	0.0	0.09	
GP-43B	10/21/2014 12:12	0.0	0.0	20.7	0.0	-0.02	
GP-43B	11/12/2014 16:13	0.0	0.1	20.5	0.0	-0.02	
GP-43B	12/12/2014 14:13	0.0	0.0	21.0	0.0	0.02	
GP-43C	1/23/2014 15:32	0.0	0.1	21.0	0.0	0.05	
GP-43C	2/13/2014 14:55	0.1	0.1	19.4	2.0	0.19	
GP-43C	3/11/2014 16:29	0.0	0.0	20.6	0.0	-0.06	
GP-43C	4/23/2014 10:33	0.0	0.1	17.4	0.0	0.03	
GP-43C	5/15/2014 14:11	0.0	0.0	20.1	0.0	0.07	
GP-43C	6/10/2014 14:45	0.0	0.0	21.0	0.0	0.09	
GP-43C	7/16/2014 16:24	0.0	0.0	19.1	0.0	0.09	
GP-43C	8/21/2014 11:50	0.0	0.0	19.2	0.0	-0.02	
GP-43C	9/10/2014 16:31	0.0	0.0	19.5	0.0	0.02	
GP-43C	10/21/2014 12:13	0.0	0.1	16.2	0.0	-0.03	
GP-43C	11/12/2014 16:15	0.0	0.1	20.5	0.0	0	
GP-43C	12/12/2014 14:14	0.0	0.1	19.3	0.0	0.02	
GP-44A	1/23/2014 15:37	0.0	0.1	21.0	0.0	0.13	
GP-44A	2/13/2014 15:00	0.1	0.0	20.6	2.0	0.25	
GP-44A	3/11/2014 16:33	0.0	0.0	20.5	0.0	0.14	
GP-44A	4/23/2014 10:35	0.0	0.0	20.5	0.0	0.02	
GP-44A	5/15/2014 14:16	0.0	0.0	20.2	0.0	0.16	
GP-44A	6/10/2014 14:55	0.0	0.0	21.0	0.0	0.91	
GP-44A	7/16/2014 16:28	0.0	0.0	19.1	0.0	0.19	
GP-44A	8/21/2014 11:53	0.0	0.2	19.5	0.0	0	
GP-44A	9/10/2014 16:35	0.0	0.2	19.3	0.0	0.13	
GP-44A	10/21/2014 12:20	0.0	0.1	20.6	0.0	0	
GP-44A	11/12/2014 16:18	0.0	0.1	20.4	0.0	-0.03	
GP-44A	12/12/2014 14:19	0.0	0.0	21.0	0.0	0.05	
GP-44B	1/23/2014 15:38	0.0	1.0	8.5	0.0	-2.46	
GP-44B	2/13/2014 15:01	0.1	0.6	13.1	2.0	-0.13	
GP-44B	3/11/2014 16:35	0.0	0.7	9.2	0.0	-5.78	
GP-44B	4/23/2014 10:37	0.0	0.7	10.9	0.0	2.18	
GP-44B	5/15/2014 14:17	0.0	0.5	9.6	0.0	0.81	
GP-44B	6/10/2014 14:57	0.0	0.0	21.0	0.0	-0.11	
GP-44B	7/16/2014 16:30	0.0	0.1	17.6	0.0	0.07	
GP-44B	8/21/2014 11:55	0.0	0.1	18.2	0.0	-0.15	
GP-44B	9/10/2014 16:37	0.0	0.0	19.4	0.0	-0.23	
GP-44B	10/21/2014 12:17	0.0	0.8	10.4	0.0	0.06	
GP-44B	11/12/2014 16:20	0.0	0.8	14.9	0.0	0.7	
GP-44B	12/12/2014 14:20	0.0	0.2	19.1	0.0	-1.86	

**CEDAR REGIONAL HILLS LANDFILL  
COMPLIANCE LANDFILL GAS MIGRATION PROBES**

<b>Probe ID</b>	<b>Date/Time</b>	<b>CH4 %vol</b>	<b>CO2 %vol</b>	<b>O2 %vol</b>	<b>Lower Explosive Limit %LEL</b>	<b>Static Pressure in INWC</b>	<b>Comments</b>
GP-44C	1/23/2014 15:40	0.0	0.1	21.0	0.0	0.1	
GP-44C	2/13/2014 15:03	0.1	0.0	20.6	2.0	0.31	
GP-44C	3/11/2014 16:36	0.0	0.0	20.6	0.0	0	
GP-44C	4/23/2014 10:38	0.0	0.0	20.5	0.0	0.12	
GP-44C	5/15/2014 14:19	0.0	0.0	20.0	0.0	0.07	
GP-44C	6/10/2014 14:58	0.0	0.0	21.0	0.0	0.19	
GP-44C	7/16/2014 16:32	0.0	0.0	19.0	0.0	0.01	
GP-44C	8/21/2014 11:56	0.0	0.0	19.6	0.0	0	
GP-44C	9/10/2014 16:38	0.0	0.0	19.5	0.0	-0.5	
GP-44C	10/21/2014 12:19	0.0	0.0	20.5	0.0	0	
GP-44C	11/12/2014 16:21	0.0	0.1	20.2	0.0	0	
GP-44C	12/12/2014 14:22	0.0	0.0	21.0	0.0	0.06	
GP-45S	1/23/2014 8:14	0.0	0.1	21.0	0.0	0.07	
GP-45S	2/13/2014 7:30	0.0	0.1	20.4	0.0	0.1	
GP-45S	3/11/2014 7:56	0.0	0.0	20.9	0.0	0	
GP-45S	4/23/2014 10:49	0.0	0.0	20.5	0.0	0	
GP-45S	5/15/2014 8:39	0.0	0.0	21.0	0.0	0.26	
GP-45S	6/10/2014 6:44	0.0	0.1	21.0	0.0	0.11	
GP-45S	7/16/2014 9:08	0.0	0.0	19.8	0.0	0.02	
GP-45S	8/21/2014 12:01	0.0	0.0	19.6	0.0	0	
GP-45S	9/10/2014 8:20	0.0	0.0	21.0	0.0	0.12	
GP-45S	10/21/2014 13:55	0.0	0.0	20.7	0.0	0.02	
GP-45S	11/12/2014 11:22	0.0	0.1	20.5	0.0	0.02	
GP-45S	12/12/2014 9:14	0.0	0.1	21.0	0.0	0.19	
GP-45I	1/23/2014 8:17	0.0	0.1	21.0	0.0	0.07	
GP-45I	2/13/2014 7:31	0.0	0.1	20.5	0.0	-0.01	
GP-45I	3/11/2014 7:58	0.0	0.0	20.8	0.0	0.08	
GP-45I	4/23/2014 10:50	0.0	0.1	16.3	0.0	0.02	
GP-45I	5/15/2014 8:41	0.0	0.1	19.4	0.0	0.01	
GP-45I	6/10/2014 6:46	0.0	0.1	21.0	0.0	0.3	
GP-45I	7/16/2014 9:10	0.0	0.0	19.8	0.0	0.19	
GP-45I	8/21/2014 12:02	0.0	0.0	19.6	0.0	-0.02	
GP-45I	9/10/2014 8:21	0.0	0.0	21.0	0.0	-0.05	
GP-45I	10/21/2014 13:57	0.0	0.0	20.7	0.0	-0.05	
GP-45I	11/12/2014 11:23	0.0	0.1	20.5	0.0	0	
GP-45I	12/12/2014 9:16	0.0	0.0	21.0	0.0	-0.06	
GP-45D	1/23/2014 8:20	0.0	0.1	21.0	0.0	-0.57	
GP-45D	2/13/2014 7:33	0.0	0.1	20.4	0.0	-1.04	
GP-45D	3/11/2014 7:59	0.0	0.0	20.9	0.0	-2.26	
GP-45D	4/23/2014 10:52	0.0	0.1	19.1	0.0	0.32	
GP-45D	5/15/2014 8:42	0.0	0.0	20.8	0.0	0.59	
GP-45D	6/10/2014 6:47	0.0	0.0	21.0	0.0	0.07	
GP-45D	7/16/2014 9:12	0.0	0.0	19.8	0.0	-0.05	
GP-45D	8/21/2014 12:04	0.0	0.0	19.6	0.0	-0.3	
GP-45D	9/10/2014 8:23	0.0	0.0	21.0	0.0	-0.89	
GP-45D	10/21/2014 13:58	0.0	0.0	20.8	0.0	-0.65	
GP-45D	11/12/2014 11:25	0.0	0.1	20.6	0.0	0.11	
GP-45D	12/12/2014 9:18	0.0	0.0	21.0	0.0	-1.31	