

Recycling Services



King County

Department of
Natural Resources and Parks
Solid Waste Division

at King County Recycling & Transfer Facilities

Recycling services vary by facility. Next to each type of material, note which facilities offer recycling. See list of facilities on back page. For hours, fees, and other information about facility services, call 206-477-4466, ask employees at each facility, or visit www.kingcounty.gov/recycling-transfer.



- Make sure all recyclables are empty, clean, and dry. **NO** liquids or food.
- **NO** bagged recyclable materials. Keep them loose.
- Only put items you know can be recycled in recycling bins. When in doubt, find out.



Sort It Out *Required*

Customers who haul their own garbage or recyclable materials to King County recycling and garbage transfer facilities **must separate** corrugated cardboard, scrap metal, clean wood, and yard waste – and place them in marked recycling bins or areas at facilities offering recycling for those materials. Note which facilities offer recycling for each type of material. No fees are charged to recycle cardboard or scrap metal. The fee for clean wood and yard waste is **less** than the garbage fee.

Did you know?

70 percent of what ends up in the King County Cedar Hills Regional Landfill could have been reused, recycled, or composted.

Clean wood (unpainted, untreated)



Lumber, pallets, plywood, crates. **NO** metal hinges or latches. **NO** items longer than 8 feet. Fees apply.

At Bow Lake,
Enumclaw,
Factoria,
Shoreline

Scrap metal



Materials with 50% or more metal. **NO** paint cans, sealed drums, pressurized containers, concrete, barbed wire, ammunition or shell casings. Containers must be empty. Remove any fluids.

At Bow Lake,
Enumclaw,
Factoria,
Houghton,
Shoreline

Corrugated cardboard



Must be empty and flattened. **NO** wax-coated or food-soiled cardboard.

At Bow Lake,
Cedar Falls,
Enumclaw,
Factoria,
Houghton,
Renton,
Shoreline,
Skykomish

Yard waste



Branches, grass, leaves, stumps, wood rounds. **NO** food, metal, plastic, rocks, sod, or soil. **NO** items longer than 8 feet. **NO** branches larger than 4 inches diameter. Fees apply.

At Bow Lake,
Cedar Falls,
Enumclaw,
Factoria,
Shoreline

RECYCLE

Place all these materials together in the same recycling bin.

NO liquids or food. All materials must be empty, clean, and dry.

NO bagged recyclable materials. Keep them loose. **NO** plastic bags.
NO shredded paper. **NO** corrugated cardboard boxes.

Accepted for recycling at Bow Lake, Cedar Falls, Enumclaw, Factoria, Houghton, Renton, Shoreline, Skykomish

Paper



Cartons, cups, plastic containers



Glass bottles and jars, metal cans



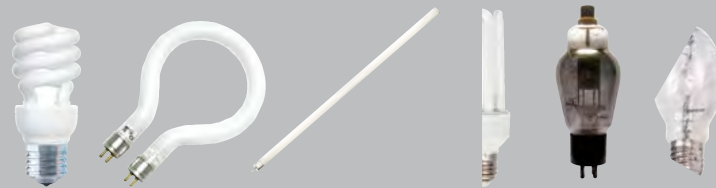
Major appliances

Accepted for recycling at Bow Lake, Enumclaw, Factoria, Shoreline



NOT accepted in garbage. Refrigerant-type appliances: Fees apply.

Mercury-containing light bulbs and tubes



Accepted for recycling at Bow Lake, Enumclaw, Shoreline, and Factoria Hazardous Waste Drop-off

NOT accepted in garbage. CFLs, HID bulbs, and fluorescent tubes up to 8 feet in length. **NO** incandescent, halogen, or LED bulbs. Limit: 10 bulbs/tubes per vehicle per day.

Textiles



Accepted for recycling at Bow Lake, Cedar Falls, Enumclaw, Factoria, Houghton, Renton, Shoreline

Clothing, shoes, linens. Torn, worn, stained items accepted. **NO** carpet. **NO** wet or mildewed items.

GARBAGE

When in doubt, call King County Solid Waste Division at 206-477-4466

Types of paper **NOT** accepted for recycling



Paper plates, paper napkins, paper towels



Pizza boxes and other food-soiled paper



Shredded paper



Wax-coated cardboard boxes

Types of glass **NOT** accepted for recycling



Ceramics and glassware



Incandescent light bulbs



Windows and mirrors

Types of metal **NOT** accepted for recycling



Aerosol cans



Foil, foil trays, foil paper



Hangers



Paint cans



Sharp objects

Types of plastic **NOT** accepted for recycling



Candy wrappers, chip bags



Diapers



Foam



Foam containers and cups



Packing peanuts



Plastic utensils



Prescription bottles/vials



Small loose caps, lids (less than 3")

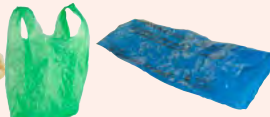


Toxic product containers

Plastics below are **NOT** accepted for recycling, **except** at Bow Lake and Shoreline. (See back page.)
For other recycling options, visit [What do I do with...?](#)



Bubble wrap, plastic air pillows



Plastic bags



Styrofoam blocks

Plastic wrap and bags



Accepted for recycling at Bow Lake and Shoreline. Residential customers only.

Must be empty, clean, and dry. **NO** food or liquid. **NO** candy or chip bags, labels, or tape.

Polystyrene (Styrofoam) blocks and coolers



Accepted for recycling at Bow Lake and Shoreline. Residential customers only.

Must be empty, clean, and dry. **NO** packing peanuts, food packaging, food, liquid, stickers, or tape.

Mattresses and box springs



Accepted for recycling at Bow Lake, Enumclaw, Factoria, Shoreline. To recycle: No wet items. Torn or stained OK. Handling fee and quantity limit apply.

Limit: Combined total of 6 pieces per customer per day. Handling fee for each mattress, futon, or box spring (any size) applies at all facilities.

Tires



Accepted for recycling at Bow Lake, Factoria, and Shoreline. Garbage fee applies.

Passenger and light truck tires only. Tires with rims OK. Limit: 4 tires per customer.

Facility locations

Algona Transfer Station
35315 West Valley Hwy,
Algona 98001

Bow Lake Recycling and Transfer Station
18800 Orillia Rd S, Tukwila 98188

Cedar Falls Drop Box
16925 Cedar Falls Rd SE,
North Bend 98045

Enumclaw Recycling and Transfer Station
1650 Battersby Ave E,
Enumclaw 98022

Factoria Recycling and Transfer Station
13800 SE 32nd St,
Bellevue 98005

Houghton Recycling and Transfer Station
11724 NE 60th St, Kirkland 98033

Renton Recycling and Transfer Station
3021 NE 4th St, Renton 98056

Shoreline Recycling and Transfer Station
2300 N 165th St, Shoreline 98133

Skykomish Drop Box
74324 NE Old Cascade Hwy,
Skykomish 98288

For more information, call King County Solid Waste Division at 206-477-4466 (TTY Relay: 711) or visit kingcounty.gov/recycling-transfer.

Alternate formats available.

Other resources for recycling and reducing waste

Curbside recycling

Contact your hauler to sign up for curbside collection. See www.kingcounty.gov/garbage to find the garbage and recycling hauler for your area.

Electronics

Recycle monitors, computers, and televisions at no charge. For information, visit www.ecyclewashington.org or www.kingcounty.gov/TakeltBack.

Household hazardous wastes

Products such as paint thinner and pesticides that contain toxic, flammable, or corrosive ingredients can be taken to Hazardous Wastemobile or hazardous waste collection sites. Visit www.hazwastehelp.org or call the Household Hazards Line at 206-296-2692 (Mon. - Fri. from 9 a.m. - 4:30 p.m.).

Prevent waste

Waste prevention means not creating the waste in the first place. For example, we can reduce food waste, purchase products with less packaging, and get off mailing lists to reduce unwanted mail. For more information, see <https://kingcounty.gov/waste-prevention>.

Residential recycling collection events

Drop off materials not collected curbside. For information, visit <https://kingcounty.gov/recycling-events>.

What do I do with...?

This King County website directory lists businesses and organizations that accept unwanted items for reuse, recycling, or proper disposal. Visit www.kingcounty.gov/WhatDoIDoWith.



King County

Department of
Natural Resources and Parks
Solid Waste Division

Waste
Prevention

Resource
Recovery

Waste
Disposal

