


Northeast Recycling and Transfer Station

Criteria Parcels 2-8 Acres in Size


Criteria Parcels 2-8 Acres
 Study Area for Northeast Recycling and Transfer Station
 Incorporated Areas
 Urban Growth Boundary
 King County Boundary

Houghton Parcels
 Critical Aquifer Recharge Areas I
 Critical Aquifer Recharge Areas II

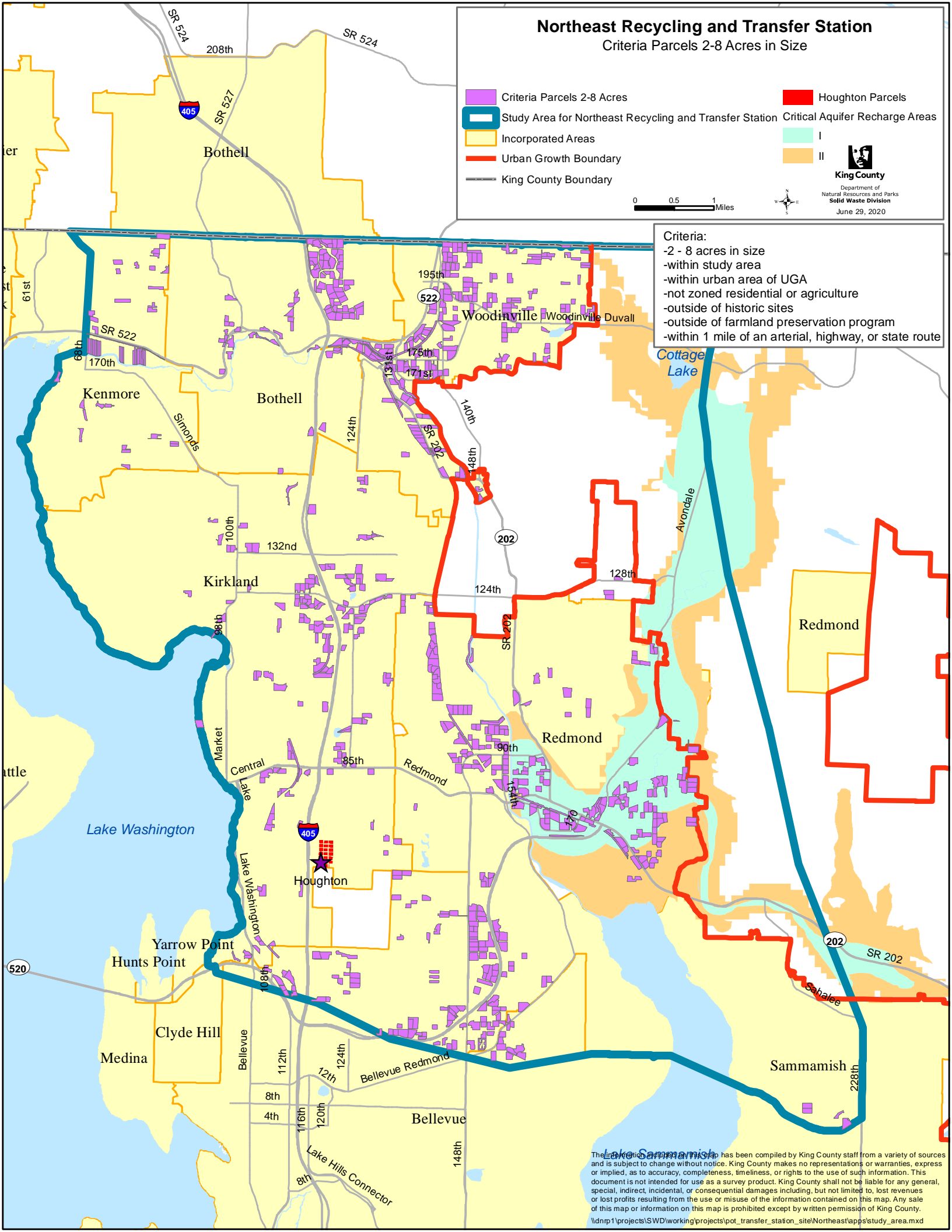


King County
 Department of Natural Resources and Parks
 Solid Waste Division
 June 29, 2020

0 0.5 1 Miles



- Criteria:**
- 2 - 8 acres in size
 - within study area
 - within urban area of UGA
 - not zoned residential or agriculture
 - outside of historic sites
 - outside of farmland preservation program
 - within 1 mile of an arterial, highway, or state route



The information on this map has been compiled by King County staff from a variety of sources and is subject to change without notice. King County makes no representations or warranties, express or implied, as to accuracy, completeness, timeliness, or rights to the use of such information. This document is not intended for use as a survey product. King County shall not be liable for any general, special, indirect, incidental, or consequential damages including, but not limited to, lost revenues or lost profits resulting from the use or misuse of the information contained on this map. Any sale of this map or information on this map is prohibited except by written permission of King County.

\\dnr1\projects\SWD\working\projects\pot_transfer_station_site\Northeast\apps\study_area.mxd