

# Factoria Recycling and Transfer Station

## Fact Sheet

**Overview:** The facility is located in a light industrial area northeast of the intersection of Interstate 90 and Interstate 405 in the City of Bellevue.

In May 2016, a new building replaced the original 1960s-era transfer building. The addition of garbage compactors at the station has resulted in fewer trucks needed to transport the garbage to the landfill. Another new feature of the station is that customers now unload their garbage directly onto a flat floor rather than into trailers. The new flat floor design allows for more adjustable and efficient traffic flow, and flexibility in where waste is collected and processed.

The station primarily serves residents and businesses from the Bellevue, Issaquah, Mercer Island, and Sammamish areas. The station includes a dedicated building for collection of household hazardous waste and offers a wide array of recycling services.

**Location:** 13800 SE 32nd St, Bellevue, WA 98005

### Hours of operation

Transfer Station Hours	Household Hazardous Waste (HHW) Hours
Mon-Fri: 6:30 a.m. – 4 p.m.	Tues-Fri: 8 a.m. – 4 p.m.
Sat & Sun: 8:30 a.m. - 5:30 pm	Sat & Sun: 9 a.m. – 5 p.m. Mon: closed

*Closed on Thanksgiving, Christmas, and New Year's Day*

**What happens to the waste?** The waste is transported by county employees in covered trailers from Factoria to the Cedar Hills Regional Landfill, 18 miles away.

**What happens to recyclable materials?** Recyclable materials are separated by type and distributed to local, national or international markets for processing into recycled content products. Reusable materials (textiles) are donated to local non-profits.

### Notable features:

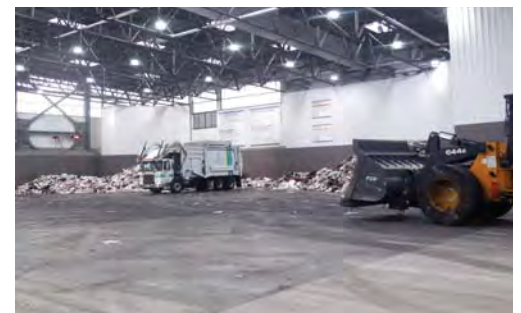
- The flat floor design improves the efficiency and flexibility of our operations, and makes it easier to check for materials that need to be recycled, such as cardboard, scrap metal, yard waste, and clean wood.
- The new recycling drop-off area is located inside the transfer station building where there are designated areas or marked recycling bins for each type of material accepted.
- A separate area is designated for yard waste and clean wood. The fees charged for yard waste and clean wood are lower than the garbage fee.
- The new Household Hazardous Waste building has advanced environmental control features including spill containment and an innovative ventilation system that reduces employee exposure to vapors during fuel collection.
- This facility includes many sustainable design features such as:
  - An enclosed solid waste transfer building which minimizes noise, dust, and odors
  - Translucent wall panels, skylights, and solar tubes make natural daylight the primary light source, reducing energy demand.
  - A conference room with cabinets manufactured locally in Tacoma made almost exclusively of recycled content materials and rapidly renewable eucalyptus.
  - Rainwater harvesting, low-flow fixtures, and drought tolerant landscaping choices save 1.3 million gallons of water a year.



*New transfer building has large self-haul customer unloading areas.*



*A household hazardous waste (HHW) transfer station operator sorts HHW*



*Commercial customer unloading area.*



**King County**

Department of  
Natural Resources and Parks  
**Solid Waste Division**

## 2017 at a glance

- **Who are the customers?** 80 percent of visits were made by self-haul customers, who contributed 21 percent of the total solid waste received at the station. Commercial customers contributed 79 percent of the total solid waste with 20 percent of the visits.
- **Tons of solid waste disposed:** 142,425. This constitutes 15 percent of solid waste at all King County transfer stations.
- **Total customer visits:** 110,461
- **HHW services provided:** The station offers Household Hazardous Waste (HHW) collection services. Materials accepted include batteries (household, vehicle, or marine), thermostats, thermometers, mercury-containing light bulbs and tubes, oil-based paints, thinners and solvents, motor oil, propane and butane tanks, household cleaners, lawn and garden products, glues and adhesives, automotive products, antifreeze, flammable liquids, and marine and road flares. Wastes collected through these services are recycled, reused, or incinerated when necessary. None of the collected household hazardous waste materials is disposed at the Cedar Hills Regional Landfill. **Note:** This service is available for households and pre-approved small quantity generators only.

### Recycling services provided:

- Appliances
- Bicycles and bicycle parts
- Cardboard
- Mercury-containing light bulbs and tubes
- Scrap metal
- Textiles
- Wood (clean, untreated)
- Yard waste
- The following can be combined in the large blue "Recyclable Materials" containers:
  - o Paper, including office paper, junk mail, envelopes, newspapers, magazines, catalogs, paper food boxes, cartons such as milk, juice and broth cartons, paper cups, shredded paper if securely tied in clear plastic bags, and hard and paperback books
  - o Cans (aluminum, tin, steel)
  - o Glass bottles and jars
  - o Plastic bottles, cups, jugs, tubs, pots, food containers, clamshells, trays
  - o Lids (3 inches or more)



Fluorescent lights and other mercury-containing bulbs and tubes are collected for recycling.



Transfer trailers haul garbage from Factoria to landfill.

### Awards and recognition:

- **The Northwest Construction Consumer Council** awarded Factoria the Green Project for Innovation in Sustainability award.
- **Solid Waste Association of North America** awarded Gold Excellence Award for Transfer Stations to Factoria.
- **American Council of Engineering Consultants** gave Factoria a 2018 National Recognition Award and a Silver Environmental award.
- **American Academy of Environmental Engineers and Scientists** honored Factoria with an Industrial Waste Practice award
- **Associated General Contractors of Washington** awarded PCL Construction Services a Construction Excellence award for their work.



**King County**

Department of  
Natural Resources and Parks  
Solid Waste Division

Waste  
Prevention

Resource  
Recovery

Waste  
Disposal

Alternative Formats On Request

206-477-4466 • TTY Relay: 711

[your.kingcounty.gov/solidwaste/facilities/factoria-transfer.asp?ID=418](http://your.kingcounty.gov/solidwaste/facilities/factoria-transfer.asp?ID=418)