



Project Overview

CURRENT



Houghton Station

Built in the 1960s, the Houghton Transfer Station is outdated and has outlived its useful life.

The layout is unable to accommodate many recycling and garbage services offered at most modern stations.

MOVING FORWARD

The County is committed to building a new, modern facility to meet the community's needs, as outlined in the 2019 Solid Waste Division Comprehensive Plan.



New Station Benefits

- More recycling and garbage services
- More convenient and accessible
- Keeps more materials out of the landfill



Listening to the Community

What We've Heard	What We've Done
We do not want this project to impact Taylor Fields.	Taylor Fields will not be impacted by the project. In fact, the fields may be enhanced if Alternative 1A or 1B is selected.
What was the process for site selection and how do we know it was transparent?	In addition to regular community updates, a special public forum and information session was held to answer questions from the community and explain the process in detail. The project schedule was also extended to allow time for a secondary review of site selection in order to add an additional layer of transparency around the process for the community.
We would like additional time to provide feedback about the Focused Site Screening process.	The deadline for the Focused Site Screening community survey was extended to allow more time for responses.
We have concerns about the closed landfill at Houghton.	A report evaluating environmental issues related to the closed landfill was developed and shared with the community.
Will you review other small sites instead of the Houghton Park & Ride?	Single parcels that ranged between 5 and 8 acres in size were reevaluated to ensure that no viable locations were overlooked during the initial selection process.
<i>A request was received from regional partners to review the Brickyard Park & Ride for viability.</i>	<i>We reviewed the Brickyard Park & Ride parcel against the Focused Site Screening criteria and determined it had more environmental constraints than the Houghton Park & Ride. For this reason, it was not included.</i>
<i>A request from a member of the Siting Advisory Group for analysis of an additional site.</i>	<i>The additional site was reviewed and analyzed by the project team.</i>



SEPA Process

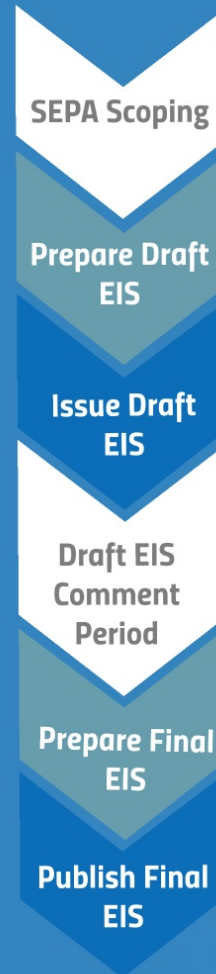
SEPA: State Environmental Policy Act

A law that requires state and local agencies to identify potential environmental impacts of proposed actions, like the construction of a new facility, through a formal review process.

This process helps all parties understand how a project will affect the area around it.

EIS: Environmental Impact Statement

The project team gathers information about potential impacts into a report called an Environmental Impact Statement, or EIS. This report is reviewed by regulators and the public, and finally by decision makers before a project can move forward.



Scoping

The first step of the EIS is called scoping and it is one of the most important parts of the process for the public to participate in. Scoping allows the project team to understand the full scope of potential impacts and mitigation to assess in the EIS.



Action Alternative 1A & 1B



Current use:

Existing Houghton Transfer Station and closed landfill
11724 NE 60th Street
Kirkland, WA

Action Alternative 1A

Existing Houghton Transfer Station facility is closed and demolished as part of construction



Current use:

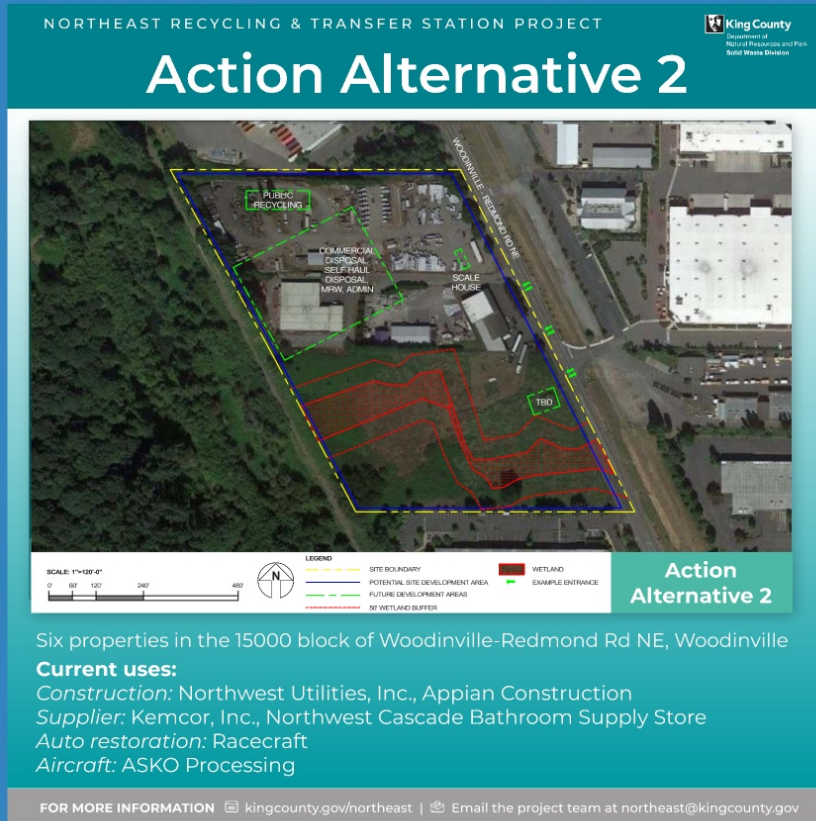
Existing Houghton Transfer Station and closed landfill
11724 NE 60th Street
Kirkland, WA

Action Alternative 1B

Existing Houghton Transfer Station facility remains open and operational during construction



Action Alternative 2



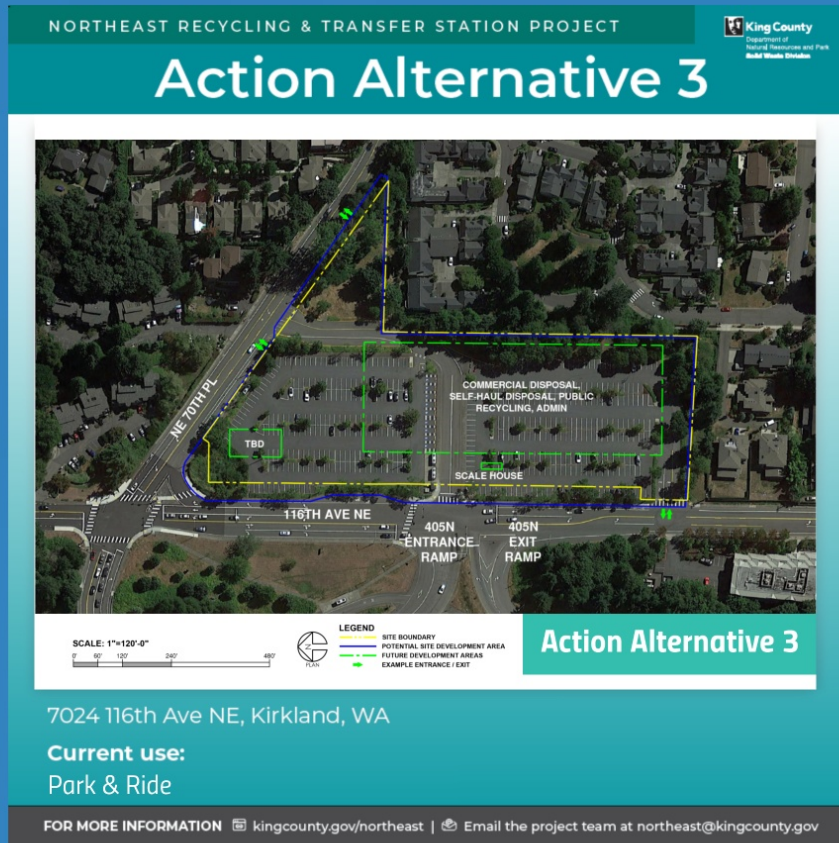
**15000 Woodinville-Redmond Rd NE
Woodinville, WA**

Current use:

Construction: Northwest Utilities,
Inc., Appian Construction
Supplier: Kemcor, Inc., Northwest
Cascade Bathroom Supply Store
Auto restoration: Racecraft
Aircraft: ASKO Processing



Action Alternative 3



7024 116th Ave NE
Kirkland, WA

Current use:
Houghton Park & Ride



No-Action Alternative

NORTHEAST RECYCLING & TRANSFER STATION PROJECT



No-Action Alternative



No-Action Alternative

11724 NE 60th Street,
Kirkland

Current use:
Houghton Transfer
Station and closed landfill

Under the no-action alternative, no new transfer station would be built and the existing station would continue to offer services as long as it operates. However, services would not be modernized or expanded.

11724 NE 60th Street
Kirkland, WA

Current use:
Houghton Transfer
Station and closed landfill

Under the no-action alternative, no new transfer station would be built and the existing station would continue to offer services as long as it operates. However, services would not be modernized or expanded.

FOR MORE INFORMATION kingcounty.gov/northeast | Email the project team at northeast@kingcounty.gov



Ways to Comment

As scoping begins, King County Solid Waste is asking the public to share what they know by submitting formal comments that will allow the team to analyze or study possible impacts and/or mitigation options.

The most effective comments include clear and specific statements about what you would like us to analyze, what you believe could be impacted and how significant that impact may be.

Once the scoping period comes to a close, the project team will review these comments and may incorporate them, as applicable, into their analysis and EIS report.

This draft report will be made available for the public to review so that you will have the chance to see how we have responded to the scoping comments, and provide additional comments on our EIS findings.

After the public and other agencies have the opportunity to provide feedback on the draft EIS, the team will incorporate responses and any additional analysis into a final document that is sent to the regulatory agencies and to the Solid Waste Director to inform the project decision.



Email

northeast@kingcounty.gov



In-Person

Thursday, Dec. 8: 6-8 PM

Brightwater Center Facility
22505 State Route 9 SE
Woodinville, WA 98072



Mail

King County Solid Waste Division
Attn: Mary K. O'Hara, P.E., PMP,
NERTS Project Manager
201 S. Jackson Street, Suite 5701
Seattle, Washington, 98104



Online Open House

kingcounty.gov/northeast

