



# BALLARD SIPHON

## Replacement Project

Department of Natural Resources and Parks • Wastewater Treatment Division

### North Site Project Update – February 28, 2012 (*see reverse for South Site*)

**North site:** Shaft excavation begins this week. Neighbors can expect continued activity and heavy truck traffic through April.

*El sitio del norte: La excavación del eje comienza esta semana. Vecinos pueden esperar actividad continuada y tráfico de camiones hasta abril.*

**Typical work hours:** 7:00 a.m. – 6:00 p.m. weekdays

**24-hour project hotline/Para más información\*:** 206-296-3848

(\*Señale su idioma y llamaremos a un intérprete. El servicio es gratuito.)

#### NORTH SITE ACTIVITIES:

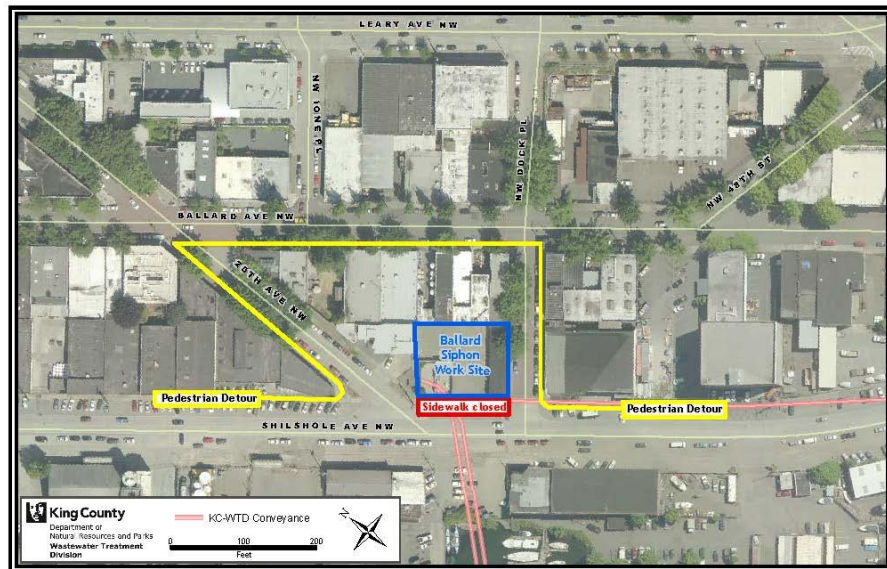
Crews have installed dewatering wells at the project's north site on Shilshole Avenue Northwest and are now beginning to excavate the tunnel boring machine retrieval shaft. The shaft extends roughly 80 feet below ground. Neighbors can expect to continue to see activity and increased truck traffic at the site through April.

King County urges drivers and bicyclists to continue to use caution near the site. Pedestrians in Ballard should follow sidewalk detour signs around the north site.

#### WHAT TO EXPECT AT THE NORTH SITE THROUGH EXCAVATION:

- Activity involving crews, excavators, and trucks
- Truck traffic on and around Shilshole Avenue Northwest
- Shilshole Avenue Northwest sidewalk remains closed in front of the project site

*North Site Project  
Area and  
Pedestrian Detour*



#### FOR MORE INFORMATION:

For 24-hour project information call/  
Para más información: 206-296-3848

Visit the project website at:

<http://www.kingcounty.gov/environment/wtd/Construction/Seattle/BallardSiphon.aspx>

### South Site Project Update – February 28, 2012 (*see reverse for North Site*)

**South site:** Shaft construction intensifies, utility relocation continues. Truck deliveries increase as equipment and materials are brought to the site.

*El sitio del sur: Construcción del eje se intensifica, utilidad reubicación continua. Aumentan las entregas de camiones como equipo y materiales son llevados al sitio.*

**Typical work hours:** 7:00 a.m. – 6:00 p.m. weekdays

**24-hour project hotline/Para más información\*:** 206-296-3848

(\*Señale su idioma y llamaremos a un intérprete. El servicio es gratuito.)

#### SOUTH SITE ACTIVITIES:

**Onsite activity continues to increase at the project's south site at West Commodore Way.** Crews have started excavating and forming the ring wall for the vertical shaft machine entrance. Large, concrete rings needed for shoring and other large equipment will continue to be delivered to the site.

There will continue to be **increased truck traffic** around the project area. King County urges community members to follow traffic control personnel directions and take extreme caution when passing through the 24th Avenue West and West Commodore Way intersection.

Seattle Public Utilities (SPU) work was completed last week on West Commodore Way to relocate utilities in preparation for installation of a junction structure connecting the new siphon to the existing conveyance system. *Thank you for your patience during this period of high-level activity.*

Puget Sound Energy (PSE) will perform similar work in the same area of West Commodore Way in March. Parking remains available along the project site's northern boundary on West Commodore Way. ***Please use caution in this area and follow posted traffic signs and flaggers.***

#### WHAT TO EXPECT AT THE SOUTH SITE:

- High levels of activity involving crews, cranes, excavation equipment and trucks
- Increased truck traffic on and around West Commodore Way
- Periodic traffic revisions on West Commodore Way near the 24th Avenue W intersection
- Possible work on Saturdays and/or longer work hours during the week

South Site  
Project Area

