

BALLARD SIPHON

Replacement Project

Department of Natural Resources and Parks • Wastewater Treatment Division

May 29, 2012

Heavy truck traffic Friday, June 1; Road closure begins Saturday, June 2

Mucho tráfico de camiones el viernes, 1 de junio; el cierre de West Commodore Way entre 23rd Avenue West y 24th Avenue West comienza el sábado, 2 de junio

Heavy truck traffic Friday, June 1:

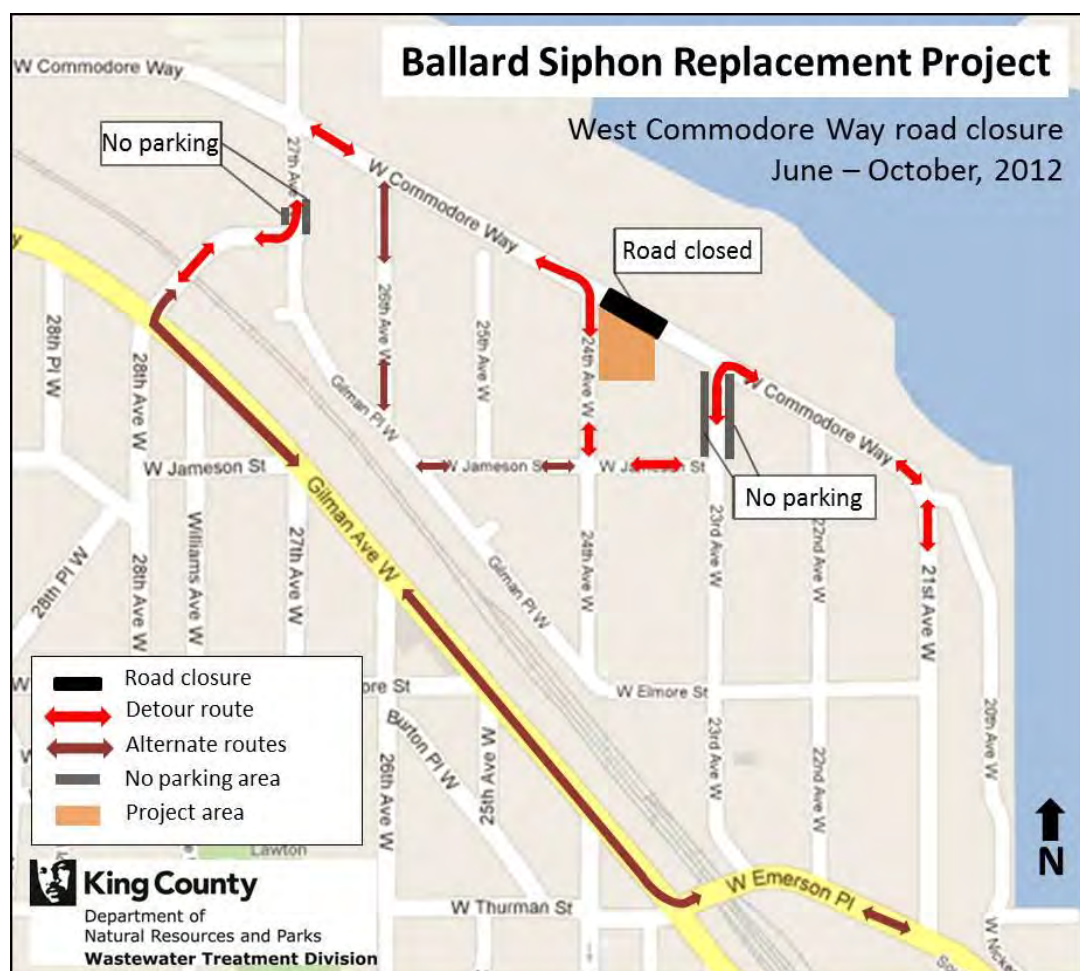
Crews have completed digging the shaft at the south project site on West Commodore Way and 24th Avenue West. On Friday, crews will be pouring a concrete "plug" at the bottom of the shaft. **There will be heavy truck traffic from 6 a.m. to 2 p.m. on Friday and 8 to 10 trucks on site at a time.**

Road closure begins Saturday, June 2:

Beginning June 2, West Commodore Way will be closed between 23rd Avenue West and 24th Avenue West for approximately four months. Traffic will be detoured around the road closure via 23rd Avenue West, West Jameson Street and 24th Avenue West (*see map*). The road closure is necessary to connect existing sewer pipes to the new siphon pipeline.

WHAT TO EXPECT DURING THE ROAD CLOSURE:

- Traffic control signs and staff to ease congestion
- Parking restrictions along the detour route (*see map*)
- High levels of activity involving crews, cranes, excavation equipment and trucks; noise and dust typical of a construction site
- Increased truck traffic along the detour route
- Typical work hours Monday - Friday, from 7 a.m. until 6 p.m.; longer weekday hours and Saturday work possible



FOR MORE INFORMATION:

For 24-hour project information call/
Para más información: 206-296-3848

Alternate formats available: call 206-684-1235 or TTY Relay: 711
Suplente formatear disponible: llame 206-684-1235 o relevo de TTY: 711

Visit the project website at:

<http://www.kingcounty.gov/environment/wtd/Construction/Seattle/BallardSiphon>

Road closure begins Saturday, June 2 (continued):

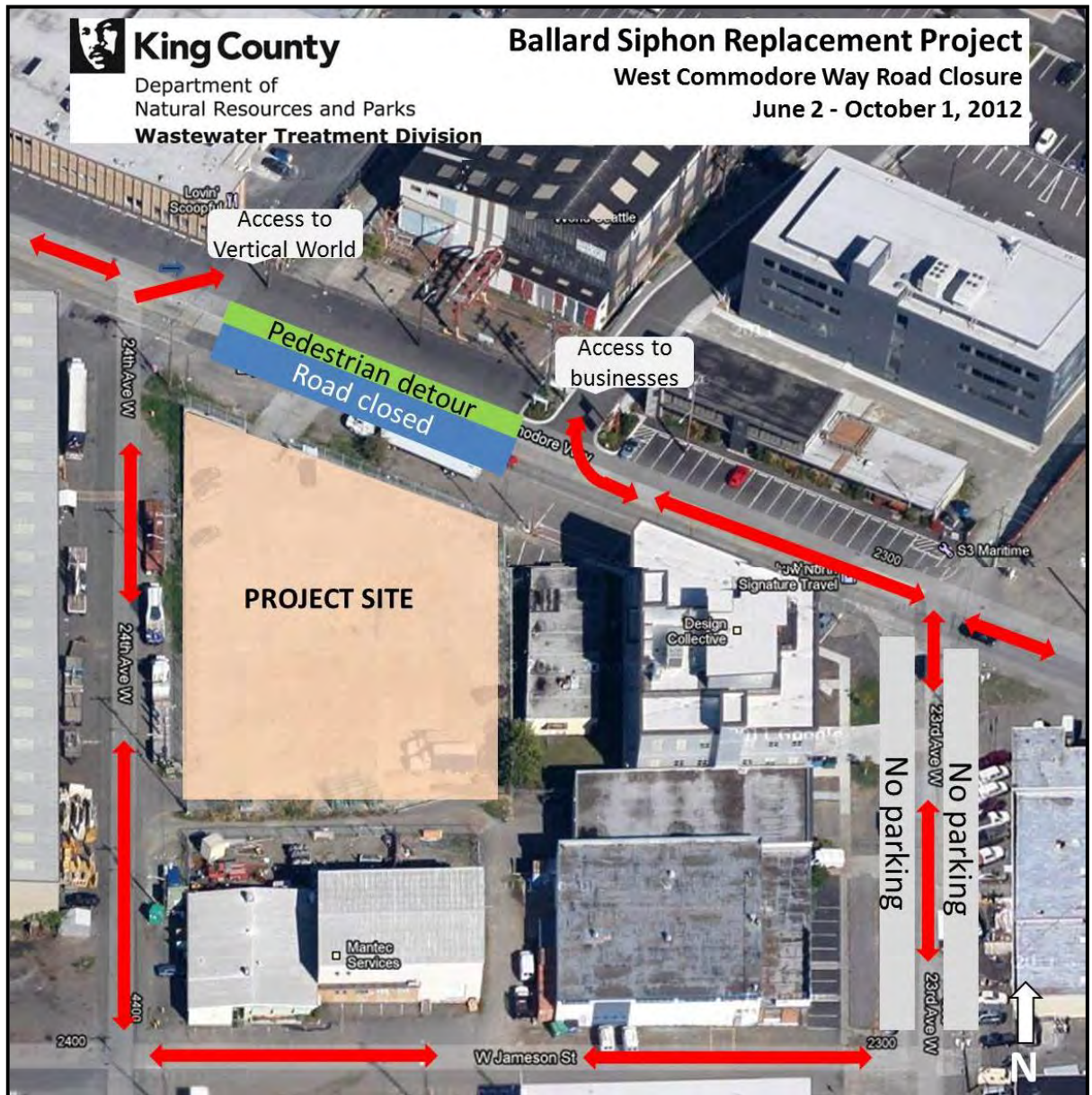
Businesses along West Commodore Way in the area of the road closure will be open and accessible during this time via the following:

Vehicle:

Access to businesses will be maintained from both the east and west (see map). Please follow posted signs and use caution in this area.

Pedestrian:

A pedestrian detour will be in place along West Commodore Way (see map).



***Please use caution and follow posted traffic signs and flaggers.
Please plan for extra travel time when driving through this area.***

FOR MORE INFORMATION:

For 24-hour project information call/
Para más información: 206-296-3848

Alternate formats available: call 206-684-1235 or TTY Relay: 711
Suplente formatear disponible: llame 206-684-1235 o relevo de TTY: 711

Visit the project website at:

<http://www.kingcounty.gov/environment/wtd/Construction/Seattle/BallardSiphon>