

October 1, 2013

### Tunnel complete! Crews begin installing pipe from the south site

**North site:** Crews continue to prepare the north shaft for pipe installation. Detour on Shilshole Avenue Northwest begins in early 2014.

*El sitio del norte: Continúan los trabajos para preparar el túnel para la instalación de la tubería. El desvío en la Avenida Shilshole Northwest comienza en los primeros 2014.*

**South site:** Crews are installing sewer pipe in the tunnel, working two 10-hour shifts a day, Monday through Saturday. Increased truck traffic around the site as trucks deliver pipe.

*El sitio del sur: Los equipos están instalando tubería de desagüe en el túnel, trabajando dos turnos de 10 horas al día, del lunes al sábado. Aumenta tráfico de camiones alrededor del sitio.*

**24-hour project hotline/Para más información:**

206-296-3848

#### NORTH SITE ACTIVITIES:

Crews completed the 2,000 foot tunnel underneath Salmon Bay and removed the tunnel boring machine from the Ballard site. Work continues on the north site to prepare the north shaft for pipe installation.

King County urges drivers and bicyclists to continue to use caution near the site. Pedestrians in Ballard should follow sidewalk detour signs around the north site (*see map*).

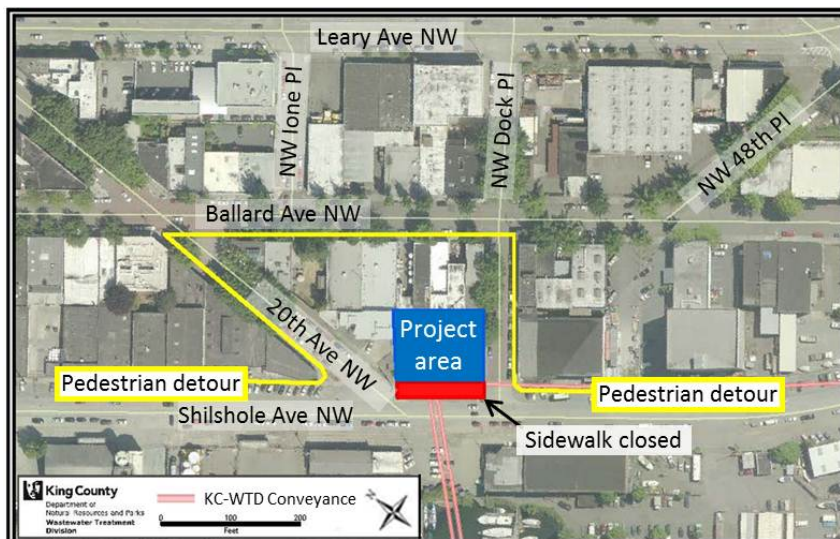


Looking through the tunnel towards the north shaft in Ballard

#### WHAT TO EXPECT AT THE NORTH SITE:

- High levels of activity involving crews, cranes, excavation equipment and trucks
- Increased truck traffic on and around Shilshole Avenue Northwest
- Shilshole Avenue Northwest sidewalk remains closed in front of the project site
- **Four-month Shilshole Avenue Northwest detour begins in early 2014**

(over)



**Alternate formats available: call 206-684-1280 or TTY Relay: 711**



# BALLARD SIPHON

## Replacement Project

Department of Natural Resources and Parks • Wastewater Treatment Division

### SOUTH SITE ACTIVITIES:

Crews cleaned the tunnel and are installing the sewer pipe this week. There will be **increased truck traffic** around the project area as trucks deliver 85-inch diameter pipe sections to the site for lining the tunnel. Crews will install approximately 160 sections of pipe and will be working two 10-hour shifts a day, Monday through Saturday.

Crews also continue to build the afterbay structure (*see map*) connecting the new siphon to the existing sewer system.

King County urges drivers, bicylists and pedestrians to continue to use caution near the site.

### WHAT TO EXPECT AT THE SOUTH SITE:

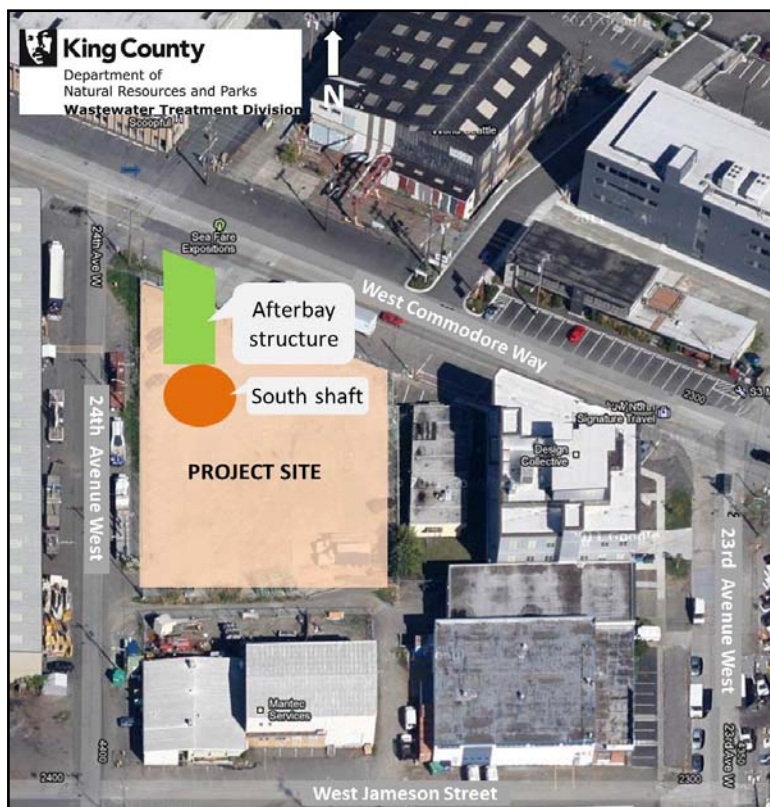
- Activity on the project site involving equipment and trucks 24 hours a day, Monday through Saturday and some Sundays
- Increased truck traffic around West Commodore Way
- Additional nighttime noise and lighting



*The tunnel boring machine after tunneling*



*The tunnel boring machine cutter head*



### FOR MORE INFORMATION OR TO BE ADDED TO THE PROJECT EMAIL NOTIFICATION LIST:

**Contact:** Adair Muth at [adair.muth@kingcounty.gov](mailto:adair.muth@kingcounty.gov) or 206-263-7319

**24-hour Project Hotline/Para más información:** 206-296-3848

**Website:** Visit [www.kingcounty.gov](http://www.kingcounty.gov) and search "Ballard Siphon"

**Alternate formats available: call 206-684-1280 or TTY Relay: 711**