

BALLARD SIPHON

Replacement Project

Department of Natural Resources and Parks • Wastewater Treatment Division

North Site Project Update – July 23, 2012 (see reverse for South Site)

North site: Crews will install a piece of monitoring equipment near the north site on July 24 and 25. The north site will continue to have little activity for the next 3-4 months.

El sitio del norte: Instalarán una pieza de equipo de monitoreo cerca del sitio del Norte el 24 de julio y 25. El sitio del norte sigue tener poca actividad para los próximos 3-4 meses.

Typical work hours: 7:00 a.m. – 6:00 p.m. weekdays

24-hour project hotline/Para más información*: 206-296-3848

(*Señale su idioma y llamaremos a un intérprete. El servicio es gratuito.)

NORTH SITE ACTIVITIES:

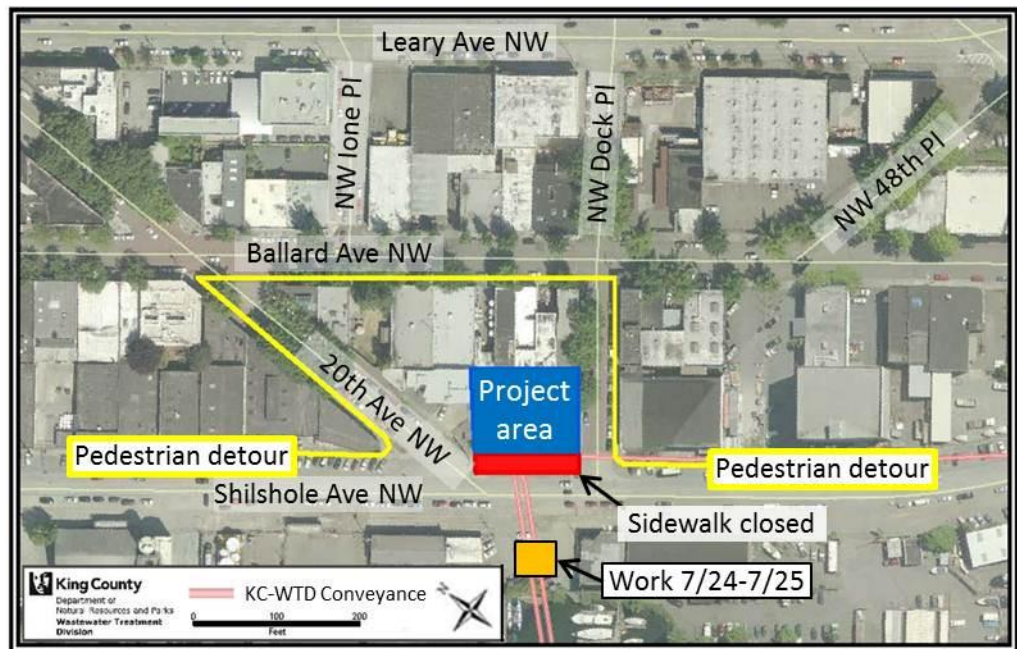
Crews will install a small piece of equipment to monitor ground movement during tunnel installation on July 24 and July 25 in the parking lot across the street from the project site on Shilshole Avenue Northwest (see map). Crews will work 7 a.m. to 5 p.m. and need 5-6 parking spaces for the work. There will be large construction equipment on site during the work, including a drill rig.

The north site will continue to have little activity until tunneling reaches Ballard. During this quieter time, the

County has moved the construction fencing on Shilshole Avenue Northwest back to provide more space for cyclists and parking. Fencing will be moved back towards the street when activity at the site resumes in 3-4 months.

King County urges drivers and bicyclists to continue to use caution near the site. Pedestrians in Ballard should follow sidewalk detour signs around the north site.

North Site Project Area and Pedestrian Detour



FOR MORE INFORMATION:

Contact: Adair Muth at
adair.muth@kingcounty.gov or
206-263-7319

24-hour Project Hotline/Para más información: 206-296-3848

Website:

<http://www.kingcounty.gov/environment/wtd/Construction/Seattle/BallardSiphon.aspx>

Alternate formats available: call 206-684-1235 or TTY Relay: 711

South Site Project Update – July 23, 2012 (see reverse for North Site)

South site: Work continues to build the structure that will connect existing sewer pipes to the new siphon pipeline. The West Commodore Way road closure and detour continue through early October.

El sitio del sur: Continúan los trabajos para construir la estructura que conectará la tubería de alcantarilla existente al nuevo tubería de sifón. El cierre y desvío de West Commodore Way continúa hasta principios de octubre.

Typical work hours: 7:00 a.m. – 6:00 p.m. weekdays

24-hour project hotline/Para más información*: 206-296-3848

(*Señale su idioma y llamaremos a un intérprete. El servicio es gratuito.)

SOUTH SITE ACTIVITIES:

Work continues on West Commodore Way to build the structure that will connect the existing sewer pipes to the new siphon pipeline. Crews have installed shoring and completed excavation in the roadway. Crews are beginning to build the junction structure, which will connect to the new siphon pipe.

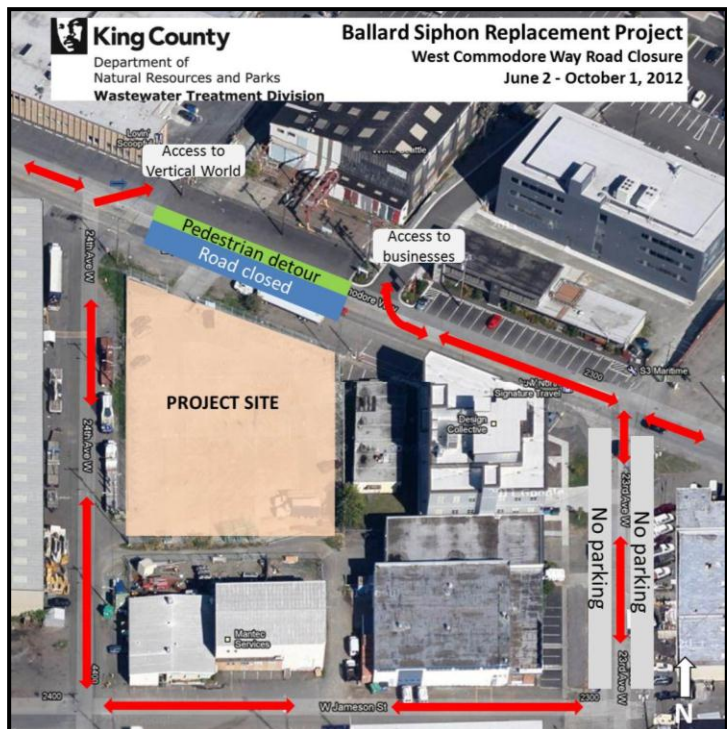
Tunneling will begin in September. The tunnel boring machine and large, concrete tunnel rings to support excavation will be delivered to the site in late August. The tunnel will be built with over 500 rings.

Community members can expect increased truck traffic around the project area. King County urges community members to follow traffic control personnel directions and take extreme caution around the project area and detour.

WHAT TO EXPECT AT THE SOUTH SITE:

- High levels of activity involving crews, cranes, excavation equipment and trucks
- Increased truck traffic on and around West Commodore Way
- West Commodore Way road closure and detour (see map)
- Possible work on Saturdays and/or longer work hours during the week

South Site Project Area and Detour



Alternate formats available: call 206-684-1235 or TTY Relay: 711