

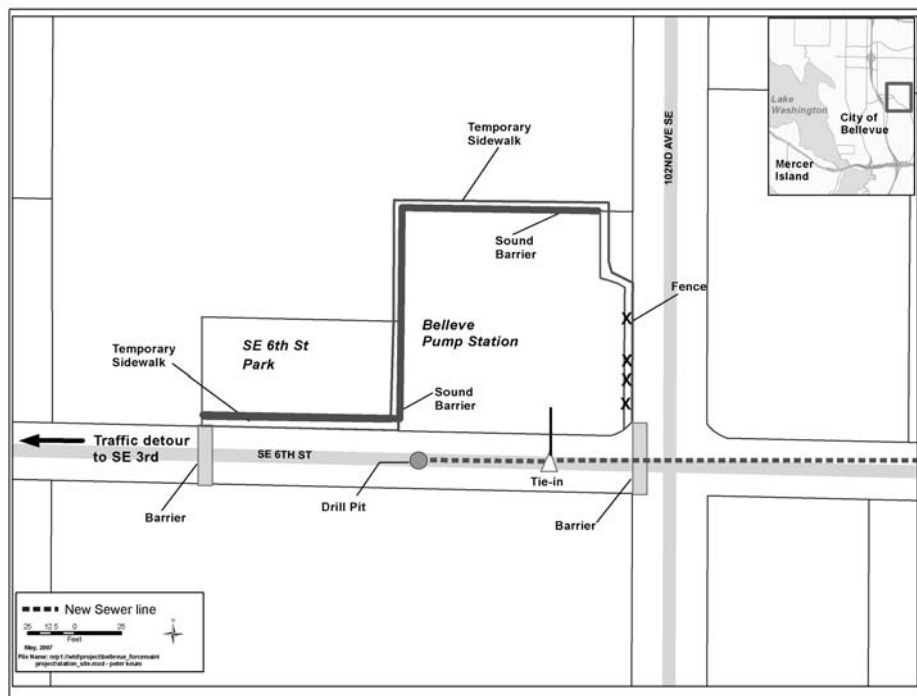


## ***Drill casing installation begins August 22 at Bellevue Pump Station work site Southeast Sixth Street closes August 21***

During the week of August 20 King County's contractor will install steel casing on Southeast Sixth Street between 100<sup>th</sup> and 102<sup>nd</sup> Avenues Southeast. Southeast Sixth Street will close to traffic on August 21 and remain closed through the end of the year.

The casings help stabilize the soils at the drill's point of entry and guide the drill on an accurate bore path. Installing the casings requires heavy machinery likely to increase noise levels during the week. King County's contractor is closely monitoring noise levels to minimize disruption.

This phase of the project should be completed by the end of August. Crews will begin drilling the pilot hole for the new force main after the casings are in place.



King County is building this new 5,300 foot force main to help meet Bellevue's growing demand for wastewater treatment services.

### ***What should you expect?***

- Heavy machinery, increased noise and activity from the work area beginning August 22, 2007.
- Work hours will generally be 7 a.m. – 6 p.m. on weekdays, 9 a.m. – 6 p.m. on Saturdays.

Thank you for your continued patience. Please call the hotline with questions or concerns.

**Alternate formats available by calling 206-684-1235 or TTY (711)**

**QUESTIONS? Call the 24-Hour Construction Hotline: 206-296-4081**