



FREMONT SIPHON

replacement project



King County

Department of
Natural Resources and Parks
Wastewater Treatment Division

Queen Anne Site Project Update

January 6, 2017

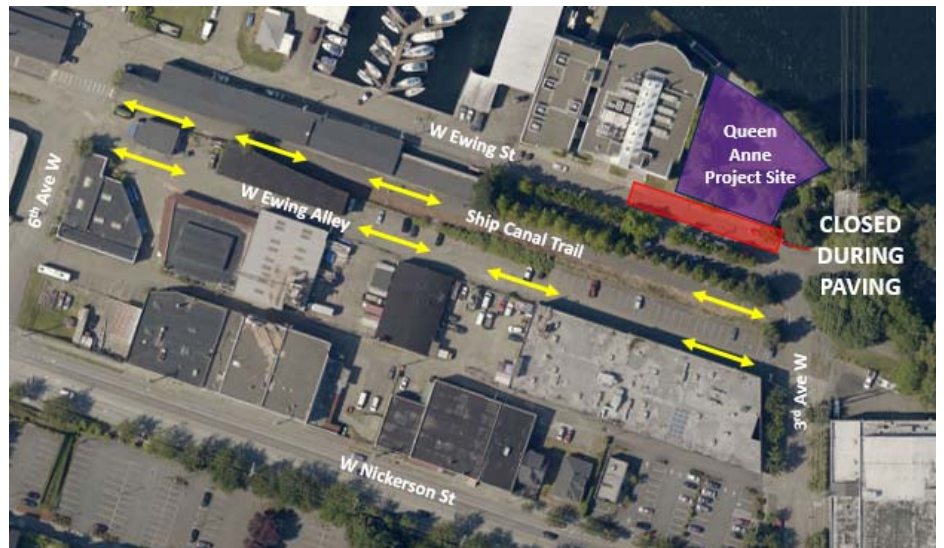
Week of January 9: Paving and restoration on W. Ewing St.

The project team is excited to announce that the new siphons are now fully operational and in use! Sewage and stormwater from more than 100 square miles of King and Snohomish Counties now flows safely and reliably through the new pipes to the County's treatment plant in Magnolia.

With the siphons online, the contractor will begin restoring the construction area. To restore the area, the contractor will remove the current asphalt and gravel before repaving the street. The curbs, gutters and sidewalks will return to their pre-construction states.

W. Ewing Street closes Jan. 9, reopens Jan. 16

- The contractor will close W. Ewing Street for restoration work beginning **Monday, Jan. 9**, weather dependent
- The road will reopen by **Monday Jan. 16**
- Vehicles detour to W. Ewing Alley
- W. Ewing St. will remain open for deliveries west of the King County Environmental Labs
- The Ship Canal Trail will remain open for cyclists and pedestrians



What to expect:

- Asphalt trucks on and around the project site
- Odors from laying the asphalt. Odors will subside after crews finish paving
- Signs marking the street closure and W. Ewing Alley detour
- Work on weekdays from 7 a.m. – 6 p.m.

Thank you for your patience! We know the detours and traffic changes during construction aren't easy.

Stay safe!

Please be cautious and aware when you're near the construction site. Please do not engage individuals working at the site. Community members can ask questions or share concerns about the project 24 hours a day by calling the project information line: 206-205-5428.

For more information:

Call the 24-hour project information line: 206-205-5428
Visit: www.kingcounty.gov/fremontsiphon
Email: doug.marsano@kingcounty.gov

ALTERNATIVE FORMATS AVAILABLE
206-477-5371 / 711 (TTY RELAY)