



# Kirkland Pump Station and Sewer Upgrade

## OVERVIEW

- Originally built in the 1960's
- Conveys flows from downtown Kirkland east to the main conveyance pipe which takes the wastewater to King County's South Treatment Plant in Renton



**KIRKLAND  
PUMP  
STATION**



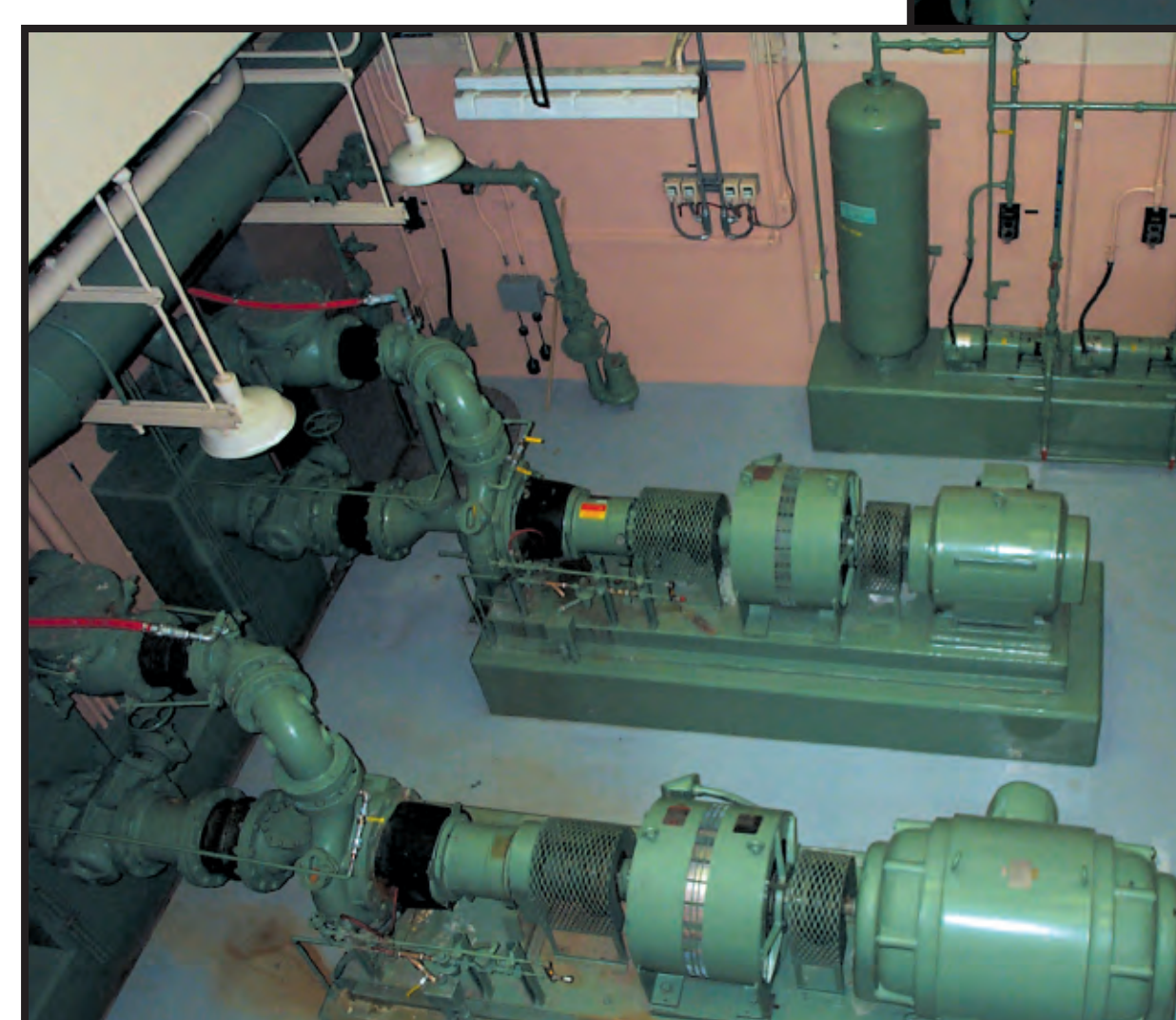
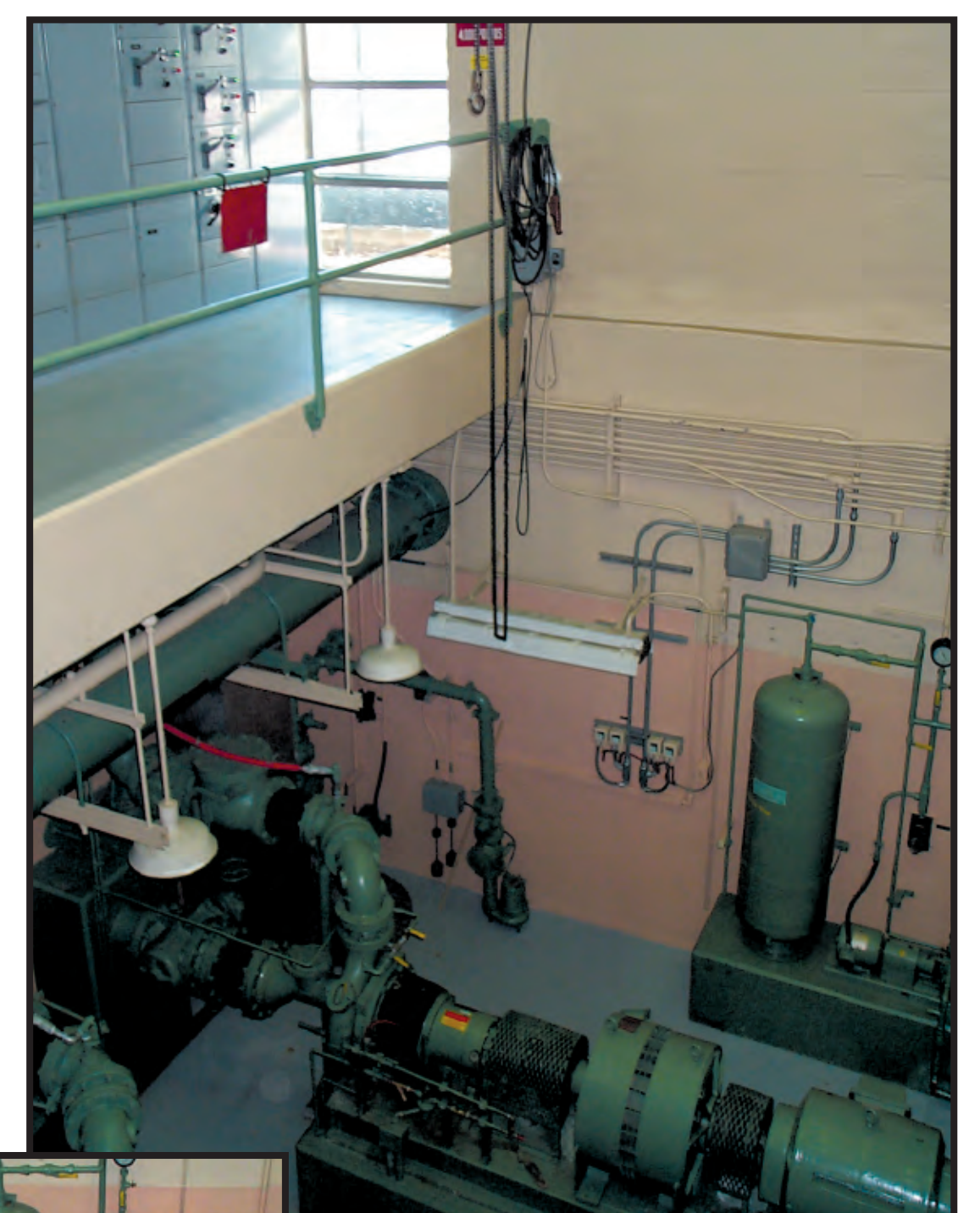
**PUMP STATION FROM PARK LANE**

## NEED FOR PROJECT

- Replace aging equipment to ensure safe and reliable operations for the future
- Meet current design standards and codes
- Increase capacity to accommodate growth

## WORK TO BE COMPLETED

- Replace pumps
- Modernize control instrumentation
- Upgrade electrical equipment
- Replace standby emergency generator
- Replace odor control equipment
- Construct new influent sewer and downstream force main sewer



**INSIDE  
PUMP  
STATION**