



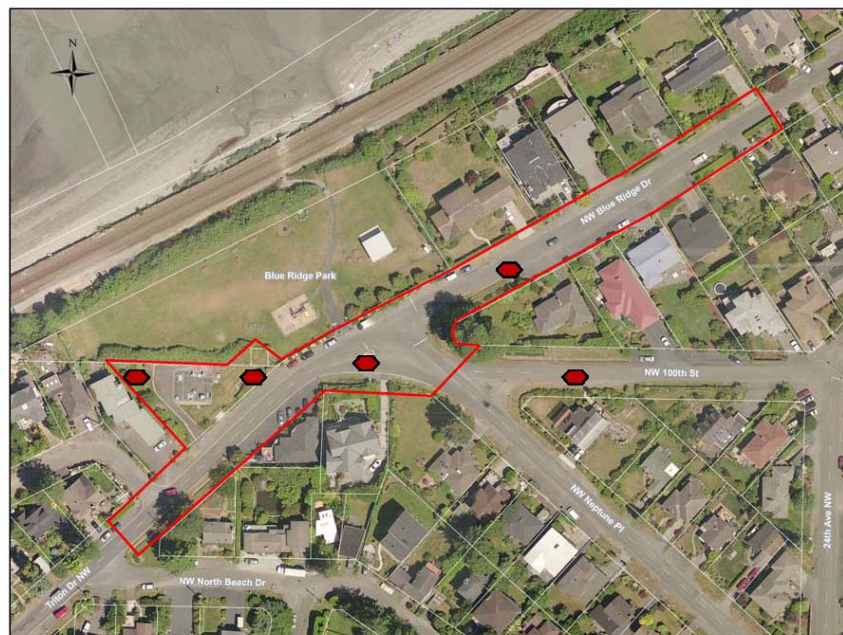
Geotechnical Field Investigations in North Beach

Work Beginning the Week of September 26, 2011

To support design of the North Beach Combined Sewer Overflow (CSO) Control project, King County will conduct geotechnical investigations to evaluate soil and groundwater conditions to inform the design and construction of an underground storage pipeline and odor control/electrical facility. The new storage facility will store excess wastewater and stormwater flows during large storms, reducing untreated discharges from the North Beach Pump Station. After storms have passed, the stored flows will be conveyed to Carkeek Wet Weather Facility for conveyance or treatment.

Proposed Work

A truck mounted drill rig will bore holes up to 60 feet below the surface. The boreholes will be stabilized with a dense grout material and an observation well will be installed in each boring. The monitoring wells will be used to measure groundwater conditions. The investigation involves up to five (5) borings. Additional borings may be conducted at a later time, as needed.



ALTERNATIVE FORMATS AVAILABLE
206-684-1280 / 711 (TTY Relay)



What Neighbors Can Expect

- Work hours will be during daylight hours from 7:00 am until 7:00 p.m. or as limited by the City of Seattle permits. For one boring on 100th Street Northwest, work hours are restricted from 9:00 a.m. until 4:00 p.m.
- People may experience noise close to the work area. During drilling, people will hear the sound of a motor. Maximum noise will occur for 2-3 minutes during sampling.
- Traffic control will be provided for all locations in the right-of-way. People should drive slowly and watch for flaggers in the work area.
- The soil boring equipment will occupy an area 10 feet wide by 80 feet long or about 5 parking spots.
- Duration of work at each location will be one to two days to complete drilling and installation of the observation well.
- Each soil boring will be 6 inches in diameter and up to 60 feet deep.
- Staff is expected on site monthly for monitoring activities.



Truck-mounted drill rig

For more information about the upcoming geotechnical work, contact Monica Van der Vieren at 206-263-7301 or Monica.vandervieren@kingcounty.gov. To learn more about the Magnolia CSO control project visit www.kingcounty.gov/environment/wtd/Construction/Seattle/NBeachCSOStorage.aspx.