

North Beach CSO Control Project



King County

Department of
Natural Resources and Parks
**Wastewater Treatment
Division**

NEWSLETTER • APRIL 2012

King County's Design Team Shares Preliminary Design of the North Beach CSO Control Project

You are receiving this newsletter because you live in the project area, along a potential construction haul route, or you have expressed interest in the North Beach CSO Control Project. This newsletter will provide you with an update on important decisions reached in early design, and let you know about upcoming opportunities to participate in project design.

A multidisciplinary design team has been working hard to meet deadlines set by Washington State Department of Ecology for design of the North Beach Combined Sewer Overflow (CSO) Control Project. Ecology requires the final design to be submitted by December 2012.

Neighbors and park users may have received notice about field investigations or have seen crews in the project area on Northwest Blue Ridge Drive and Triton Drive Northwest. These investigations provide the project team with important data to inform the location and configuration of project elements and to help plan for construction. Investigations have included:

- Utility surveys to inform the design on facility location and constructability
- Surveys to identify the boundary of the right-of-way in the potential project area
- Geotechnical investigation to assess soils and groundwater conditions
- Stormwater and drainage surveys to identify creek and stormwater conveyance in the project area



Pump station tours were a hit at the August 2011 open house.



North Beach neighbors meet King County's design team

North Beach neighbors have helped the project team understand local conditions that have been considered in project design. Your input on King County's North Beach Pump Station site was considered as we developed a configuration for the new odor control and electrical facility.

The community has been engaged throughout the planning and early design phases of the North Beach CSO Control Project, providing the team with input and vital local information. For information on how you can continue to participate in the project, please see page 4.

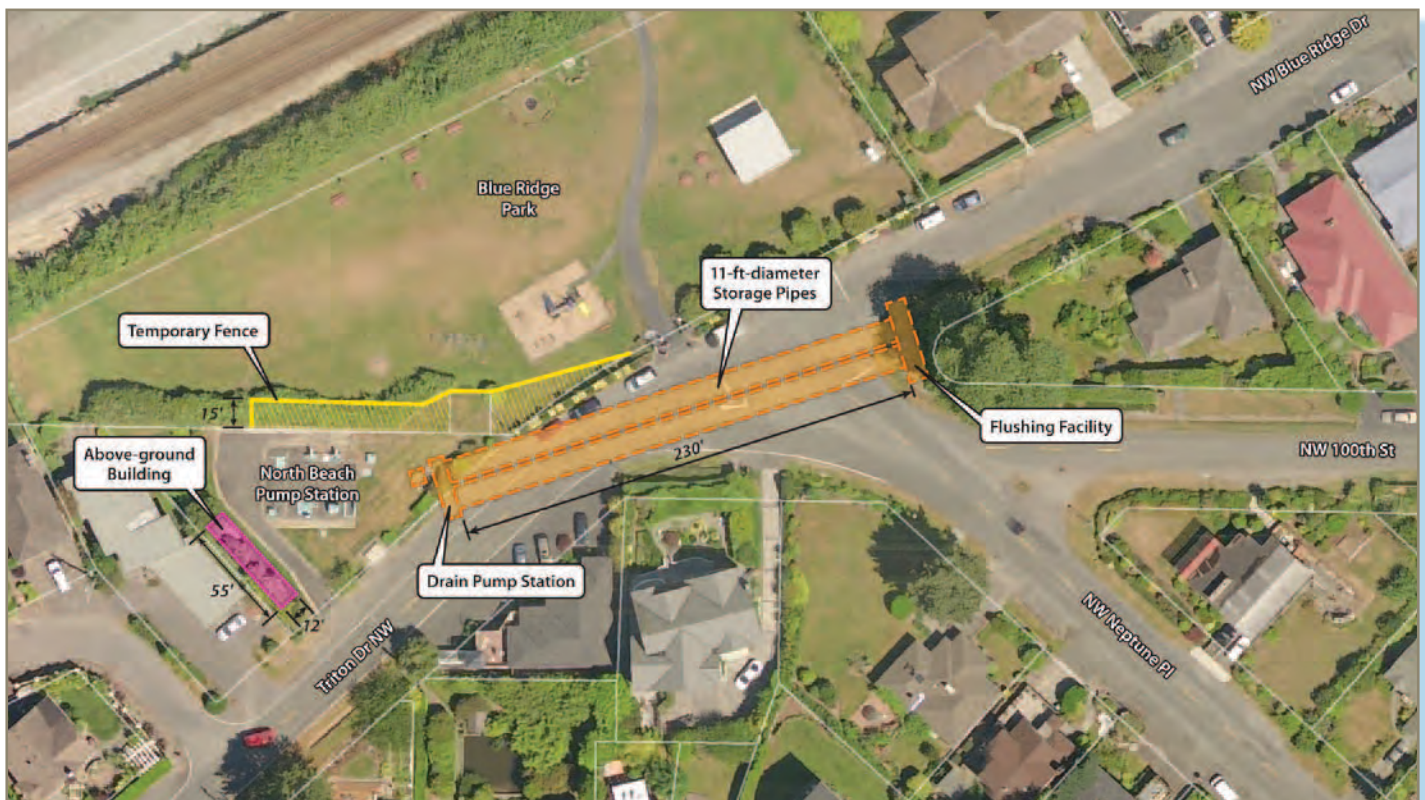
Underground storage pipeline

The design team used a range of factors to identify an optimal location and configuration for the underground storage pipeline, including underground utilities, park and residential access during construction, local conditions, safety, and efficient operations and maintenance (O/M).

The team identified a configuration that incorporates two underground storage pipes in an alignment crossing Northwest Blue Ridge Drive that:

- Provides access for O/M crews outside of travel lanes, increasing safety and reducing traffic impacts
- Allows for a simple, lower-maintenance flushing system that uses less water
- Reduces interference with underground utilities

King County's project team knows that construction of the storage pipeline in neighborhood streets requires careful planning and advance notice of construction activities to limit impacts to neighbors, park users, and commuters. The project team will host a meeting on site in Summer 2012 as construction details are developed. We will host a pre-construction meeting once a contractor is identified so the community can meet the contractor and understand construction plans and schedule.



Proposed underground pipe location and configuration

Managing our assets: North Beach Force Main Assessment

For about two weeks during Summer 2012, a contractor will be working in the tidelands at five locations between North Beach and Carkeek Park to excavate the North Beach Force Main and take pipe samples. These samples will be analyzed to provide an update on the remaining service life of this pipeline. We will provide the community with prior notice and updates on this work.

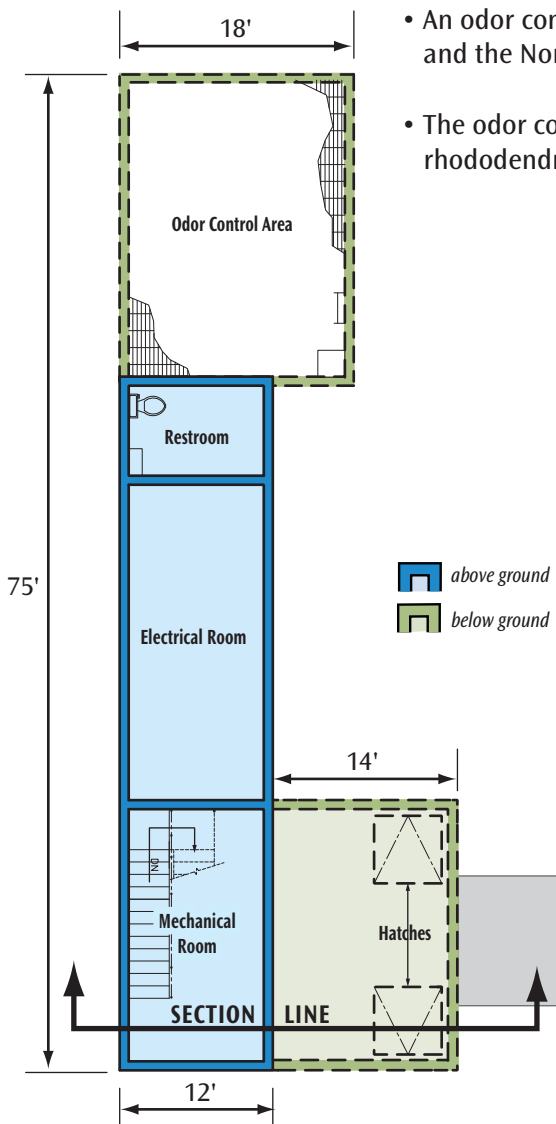
Odor Control and Electrical Equipment Facility

During planning, King County determined a location for an odor control and electrical facility on the County's North Beach Pump Station site. The building location avoids conflicts with existing underground infrastructure associated with operations of the North Beach Pump Station.

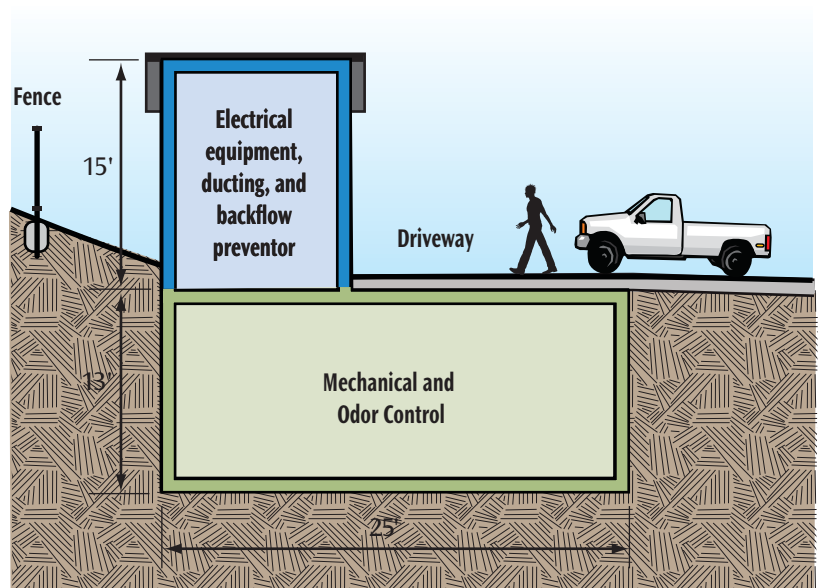
- A proposed above-ground facility size reduced from the preliminary design shown in the Facility Plan). Because of local flooding concerns, electrical equipment and other critical elements will be installed above grade. See the graphics below for information about which elements are above grade or underground.
- The existing emergency generator at North Beach can serve both the North Beach Pump Station and the new storage pipeline, eliminating space needed for a generator in the new facility. The emergency generator is needed to continue operations during power outages.
- Two existing fans will be removed, reducing surface features at the existing site.



The new odor control and electrical equipment facility was positioned to limit impacts to views of Puget Sound.



- An odor control unit will provide needed air processing for both the CSO storage facility and the North Beach Pump Station.
- The odor control and electrical building will replace a raised berm, rockery, and large rhododendrons, reducing additional view impacts for near neighbors.



Community input inspired the design of a smaller footprint for the above-ground odor control and electrical equipment facility.



King County

Department of Natural Resources and Parks

Wastewater Treatment Division

201 S. Jackson St., Suite 505

KSC-NR-0505

Seattle, WA 98104-3855

Creating Resources from Wastewater

Join us for a design workshop!

King County is working to blend new facilities in with the neighborhood.



Saturday, May 12, 2012

10:00 a.m. – 12:30 p.m.

Carkeek Park Environmental
Learning Center
950 NW Carkeek Park Rd
Seattle, WA

Puget Sound Beaches CSO Control Projects

NORTH BEACH • APRIL 2012

Upcoming opportunities for public participation

- **In April 2012**, King County will begin applying for project permits. Watch for permit signs at the North Beach Pump Station and information on the project Web page about opportunities for public comment.
- **On May 12, 2012**, you can join the team for a design workshop to help us blend the restored North Beach Pump Station site in with the neighborhood.
- **In summer 2012**, you will be invited to an onsite event to see architectural and landscape renderings resulting from community input, and to learn how we'll work to address impacts during construction.

Alternative Formats Available

206-684-1280
TTY Relay: 711

Printed on recycled paper.
Please recycle. ♻️ 1202M

1204_2379L_NbeachCSOnews.indd lpre