

North Beach CSO Control Project



King County

Department of
Natural Resources and Parks
**Wastewater Treatment
Division**

NEWSLETTER • FALL 2012

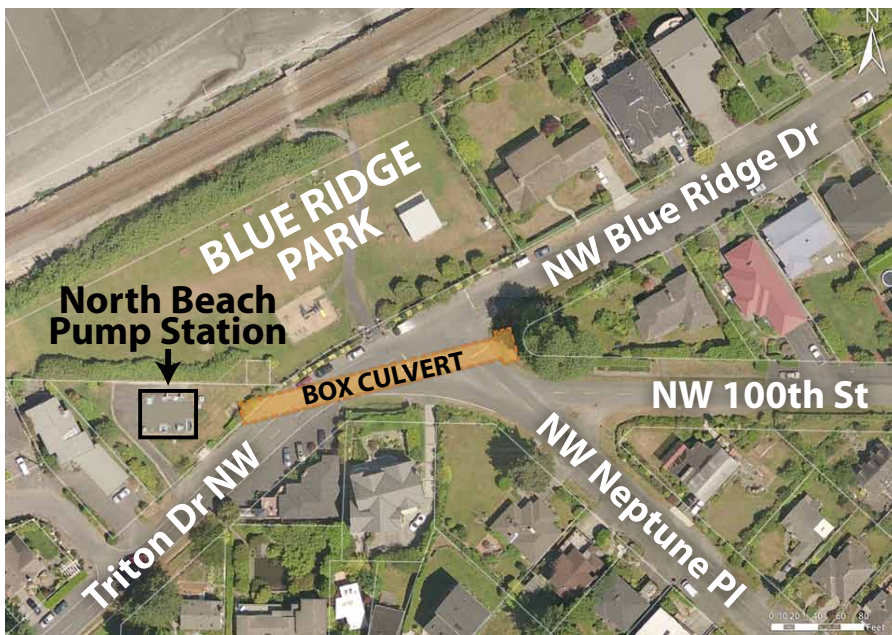
North Beach Pump Station Site Design Update



Beach-inspired building and landscape design

Community Input Helps Shape Design

King County Wastewater Treatment Division hosted a community design workshop on May 12, 2012 to hear the community's thoughts about three landscape and architecture design themes for the County's North Beach Pump Station site. The project team also discussed street restoration elements under discussion with the City of Seattle. The project team provided another opportunity for community input at the Blue Ridge Club General Meeting on June 11, which was opened to all interested community members. See page 2 for a summary of the community's thoughts and suggestions on design.



Storage facility configuration changes

King County conducts independent project reviews to look for opportunities to improve cost efficiency, constructability, and operations of our facilities. The current design developed for North Beach was largely confirmed by the review team, with one important change in the storage facility configuration, from twin pipelines to a concrete box culvert. See page 3 for more information on this new configuration and its benefits.

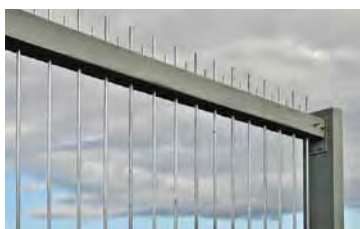
Proposed box culvert location and configuration

Community Helps King County Select Landscape and Architectural Design Elements

Community members provided thoughtful feedback to the design team at two community events, and in comments. Overall, the community expressed appreciation for the team's work to improve upon the appearance of the existing North Beach Pump Station site and to consider community input.

Most attendees expressed preference for Theme I, a beach-inspired building and landscape design. The roof profile evokes the shape of a dune while the low-maintenance, drought tolerant plants and rocky elements suggest a vegetated nearshore area. Community input about adding some color to the landscape has resulted in addition of flowering shrubs. In the updated building design, the team has changed glass and siding material to reflect observations that the previous materials were too brightly colored.

The community mostly favored the vertical rod fence type, with a few people indicating a preference for chain link fencing. No support for a mesh type fence was received by the team. Community members throughout the area suggested that the same fence type should be used to enclose the County's property and the affected area of Blue Ridge Park frontage to create a unified "gateway" appearance to both the Blue Ridge and North Beach communities.

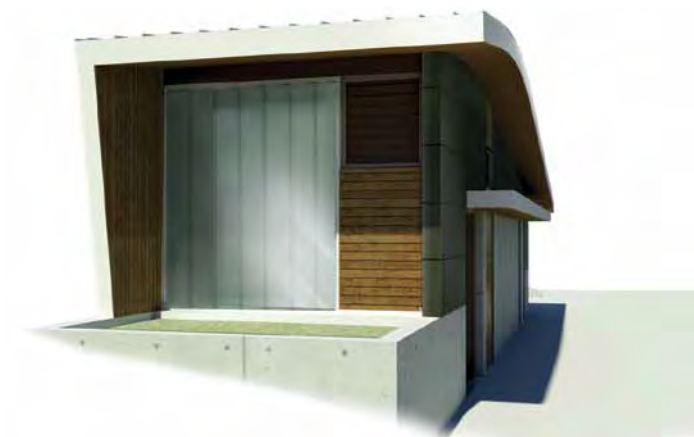


Vertical rod fence detail

Community concerns about new lighting suggested by the Seattle Department of Transportation (SDOT) were conveyed to the agency. As a result of this input, no new street lighting will be required by SDOT. Restoration of the right-of-way is still under discussion with the City of Seattle. People appreciated redesign of the intersection for vehicle and pedestrian safety. The bioretention area suggested for this area caused some concern; however, this element is no longer being considered.



Looking south from Blue Ridge Park



New Building Materials reflect community input

You're Invited!

**Saturday, Sept. 29th 10 a.m.– 1 p.m.
9921 Triton Drive NW**

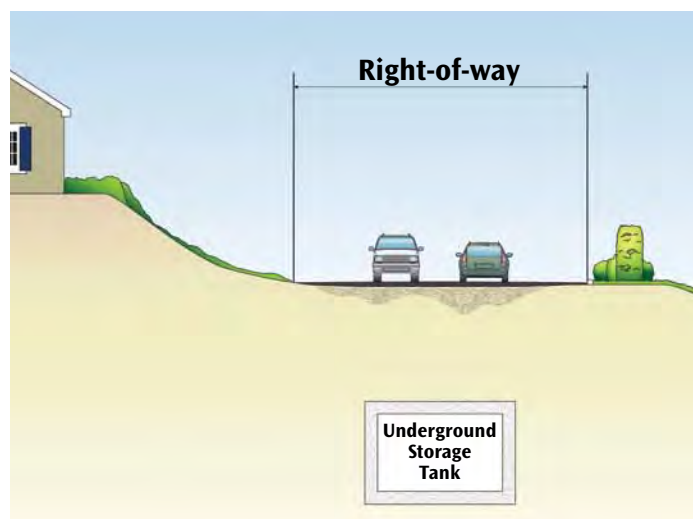
Visit us at King County's North Beach Pump Station for a project update and pump station tours!

- Hear updates on restoration of the North Beach Pump Station site and the right-of-way.
- Tour the North Beach underground pump station.
- *These tours are popular, and are provided on a "first-come, first served" basis. Please wear closed-toe shoes to tour the station.*

Box culvert design provides same storage capacity with benefits

King County will construct the storage facility as a box culvert configuration. The box culvert will be constructed in the same alignment as the twin pipelines previously proposed, and will provide the same storage capacity. This type of structure will provide a constructability benefit because the excavation is narrower, allowing installation further away from residences and creating better access for truck travel, limiting the need for trucks to back up.

We are working with near neighbors, including Blue Ridge Board on construction issues like access, deliveries, garbage/recycling, and landscaping. Construction work will be close to both homes and Blue Ridge Park. Closer to the time of construction, you will be notified by King County staff. Metro bus service will be temporarily interrupted during construction. Bus service will return to Triton Drive after construction is complete.



Storage facility under the right-of-way

Box Culvert Design Benefits

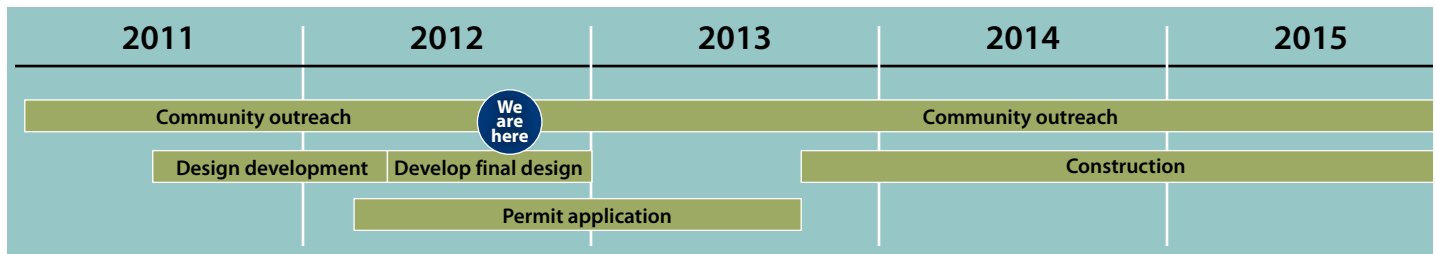
- Same storage capacity
- Narrower excavation, farther from homes
- Construction truck traffic flow improved

North Beach Force Main and Outfall Assessments

King County's contractor has completed work to obtain core samples, or coupons, from the North Beach force main, a pipeline conveying wastewater from North Beach to the Carkeek Park Pump Station and Wet Weather Facility. Three samples, along with groundwater and soils, were obtained in areas determined previously to have air pockets. These areas are most susceptible to both internal and external corrosion, and can provide the most conservative estimate of remaining service life. Analysis of the samples will be carried out this fall to develop an estimate of remaining service life for the pipeline. A report will be available by the end of 2012. For more information, please Google "North Beach Force Main."

In response to community concerns, King County has initiated a project to evaluate short and long term repair options for the deepwater outfall that is used during Combined Sewer Overflow (CSO) discharges from the North Beach Pump Station. The outfall pipeline predates the construction of the pump station and has been affected by the marine environment. We will keep the community up to date as the evaluation progresses.

North Beach CSO Project Timeline



For more information, please Google “North Beach CSO Project” or contact Monica Van der Vieren at monica.vandervieren@kingcounty.gov or 206-263-7301.



For more information about the Force Main maintenance activities, please Google “North Beach Force Main.”



Printed on recycled paper.
Please recycle.

1208_2805_NbeachCSOnews.indd wgab



King County

Department of Natural Resources and Parks

Wastewater Treatment Division

201 S. Jackson St., Suite 505

KSC-NR-0505

Seattle, WA 98104-3855

Creating Resources from Wastewater

Join Us for a Tour of the North Beach Pump Station and Project Update



Sept. 29, 2012

10 a.m. – 1 p.m.

9921 Triton Drive NW

See page 2 for details

Alternative Formats Available

206-684-1280 TTY Relay: 711