

# North Beach CSO Control Project



**King County**

Department of  
Natural Resources and Parks  
**Wastewater Treatment  
Division**

PROJECT NEWSLETTER • SPRING 2014

## Construction is underway!

King County's North Beach Combined Sewer Overflow (CSO) Control Project is currently under construction! In February, the contractor for the project, Stellar J Corporation, began mobilizing for construction and preparing for the intersection closure. You may have noticed equipment on the North Beach Pump Station site, some work in the street, and temporary construction fences.

On Monday, April 28, 2014, the project entered a major phase of construction: intersection closure at NW Neptune Place, NW 100th Street, NW Blue Ridge Drive, and Triton Drive NW. King County Metro buses also began the reroute of routes 18X and 61. The intersection closure will last up to one year, and the project is required to be complete by the end of 2015.

The contractor hired a security guard to staff the construction site after hours for safety purposes. Thanks to those who have reported safety and traffic concerns and for all neighbors' patience and cooperation as we adjust to this major change in the neighborhood. Please continue to let us know if you have any questions or concerns by calling our 24-hour construction hotline: 206-296-7372.

### ***During construction and the intersection closure, neighbors can expect:***

- Construction work hours between 7 a.m. and 6 p.m. on weekdays and 9 a.m. and 6 p.m. on Saturdays. Unexpected events could require work outside of these hours; if this occurs, the County will provide notice to neighbors and the community about the activities and duration.
- Maintained access to homes and Blue Ridge Park during project work. Neighbors should access Blue Ridge Park via the north side of NW Blue Ridge Drive using the existing gate.
- Traffic signs installed around the project area to alert drivers, cyclists, and pedestrians to the intersection closure.



*Approximate intersection closure area shown in orange.*

### **FAQ: Can pedestrian access be created so people can walk past the construction zone?**

*During the design phase, the project team recognized that the contractor has limited space to carry out major construction activities, making it infeasible to create a pedestrian walkway past the area. Accommodations were made for neighbors to receive mail and safely enter and exit away from the construction area. The intersection closure may provide a temporary inconvenience to travel in the area, but the project will provide benefits far into the future, reducing overflows of untreated stormwater and sewage into Puget Sound at North Beach.*

**Questions? Concerns? Call our 24-hour hotline: 206-296-7372**

**Leave a message, and a project team member will return your call.**

## What will happen during the intersection closure?

Until June, the construction contractor will be relocating utility lines and installing bypass systems to make room for the underground storage tank. Utilities include sewer, water, gas, phone, and cable lines. Temporary service outages will occur. The project team and appropriate utility companies will provide neighbors advance notice of any planned service interruptions.

In late June, the intersection will likely reopen for approximately ten days. The contractor opted to reopen the street to reduce street closure fees charged by the City of Seattle. Asphalt will be installed, but then removed and recycled when the intersection is closed again to build the underground storage tank. In total, the intersection will be closed for up to one year.

To install the underground storage tank, the contractor will dig a 20-foot-deep trench in the intersection. This will involve shoring (see box below), which requires large, heavy machinery.

The project team will continue to provide updates to neighbors prior to major work via flyers and email.

## What does the site look like?

- Six-foot-high construction fences protect the construction site and work area.
- Equipment on site for the next few months will include excavators, dump trucks, and trailers.
- Trucks with materials and equipment will use 24th Avenue NW as the haul route. Trucks and equipment will enter the construction site on NW Neptune Drive.
- Signs and flyer boxes with the latest project information are located at each side of the site.



## Project Schedule

This is an overview construction schedule and is subject to change.

ACTIVITY	2014				2015			
Preparing for construction and setting up construction site								
Intersection closure: NW Blue Ridge Dr and NW 100th St								
Utility relocation and bypass installation								
Construct CSO Tank in street								
Construct new aboveground building: North Beach Pump Station								
Restoration: Utilities, roadway, landscaping								

We  
are  
here

**Shoring** is a general construction term that refers to methods used to keep excavations open during underground construction, essentially preventing the surrounding soils from running into the excavation. Many different shoring methods can be used and depend on the type and size of excavation, and the surrounding soils and water table. For the North Beach CSO Control Project, the contractor proposes to use shoring technology called “soil mix walls.” This method involves cutting through the ground, and mixing and injecting the soil with cement-like grout. Panels are then inserted and reinforced with steel piles to create a continuous wall. This approach creates less vibration and requires a smaller construction footprint compared to other shoring methods. Once shoring is in place, the area within the stabilized area will be excavated, soil will be taken off-site, and construction of the underground tank can begin.



## Traffic changes and updates

Closing the intersection resulted in several changes for drivers, cyclists, and pedestrians. The County understands it can be difficult for neighbors and commuters to adjust to new travel patterns.

Now that construction has begun, the County and contractor are evaluating traffic flow and area use and will make adjustments as needed to protect people and access, and to limit illegal parking. We have received comments about the traffic detours and signage, and will continue to work with the City of Seattle to create safe and clear traffic patterns and signage.

### Key things to remember:

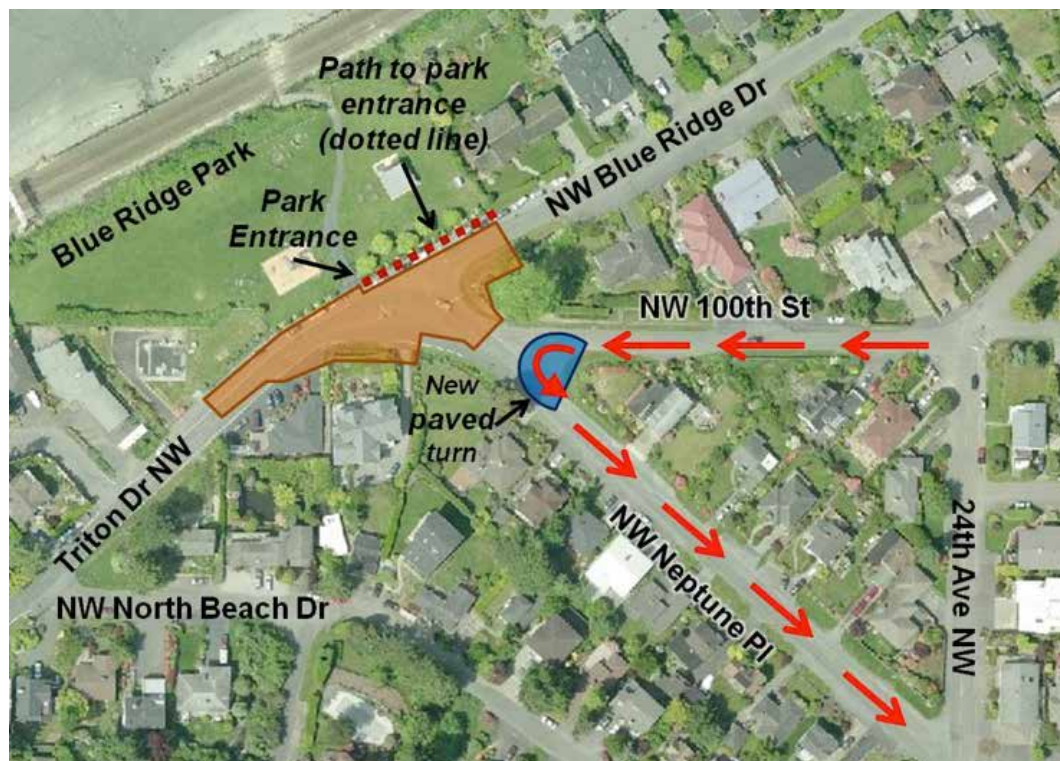
- Take extra caution when driving near the construction site. Be aware of pedestrians, cyclists, and other drivers as the neighborhood adapts to new traffic patterns.
- For safety reasons, you may not enter the construction site. Only those with authorized access and proper safety equipment may enter the site.
- Call the 24/7 construction hotline (206-296-7372) if you have additional questions or concerns.

### Traffic revisions in the area include the following:

- The intersection of NW 100th Street, NW Blue Ridge Drive, NW Neptune Place, and NW Triton Drive is closed to traffic, cyclists, and pedestrians.
- NW Neptune Drive is one-way headed southeast (see map below). Neighbors accessing NW Neptune Place should drive down NW 100th Street and turn left onto NW Neptune Place.
- NW 100th Street is two-way with local access only.
- NW Blue Ridge Drive can be accessed via NW Richwood Avenue.

### Metro bus reroute

The North Beach CSO Control Project team coordinated with King County Metro Transit to maintain bus service to the area during construction. To accommodate buses turning around, the proposed staging area in the street was reduced and a new paved turn area was installed at the corner of NW 100th Street and NW Neptune Place. Starting on April 28, the bus stop at Triton Drive NW was temporarily closed and bus service for routes 18X and 61 was rerouted from 28th Avenue NW to 24th Avenue NW.



*Intersection closure area shown in orange. Traffic pattern on NW 100th Street and NW Neptune Place shown with red arrows on map. Not to scale.*



## King County

Department of Natural Resources and Parks

### Wastewater Treatment Division

201 S. Jackson St., Suite 505

KSC-NR-0505

Seattle, WA 98104-3855

*Creating Resources from Wastewater*



## North Beach CSO Control Project

NEWSLETTER • SPRING 2014

### About the North Beach CSO Control Project

King County is installing a new combined sewer overflow (CSO) control facility, which will store excess wastewater and stormwater flows during large storms, reducing untreated discharges from the North Beach Pump Station. The County is building a concrete storage facility under Triton Drive NW and NW Blue Ridge Drive and a new aboveground equipment building adjacent to the County's existing North Beach Pump Station.

#### For more information

Stay up to date! Call the project hotline to join the project email list.

**Project Website:** [www.kingcounty.gov/environment/wtd/Construction/Seattle/NBeachCSOStorage](http://www.kingcounty.gov/environment/wtd/Construction/Seattle/NBeachCSOStorage)

Use the project feedback form, linked in the lower right side of the homepage, under "For more information"

**24-Hour Project Hotline:** 206-296-7372

**Project Contact:** Monica Van der Vieren

Email: [monica.vandervieren@kingcounty.gov](mailto:monica.vandervieren@kingcounty.gov)



#### Alternative Formats Available

206-477-5371 TTY Relay: 711

Printed on recycled paper. Please recycle.

1405\_3991w\_NbeachNEWS.indd

