

# North Beach CSO Control Project



**King County**

Department of  
Natural Resources and Parks  
Wastewater Treatment  
Division

## Weekly Construction Update – January 2, 2015

The contractor had a successful concrete pour on December 23. Heavy rain kept crews working after 6 p.m. to get the concrete dry enough to cure properly. They have now completed the bottom of the combined sewer overflow (CSO) tank. Upcoming concrete pours will occur in January to form the walls of the CSO tank.

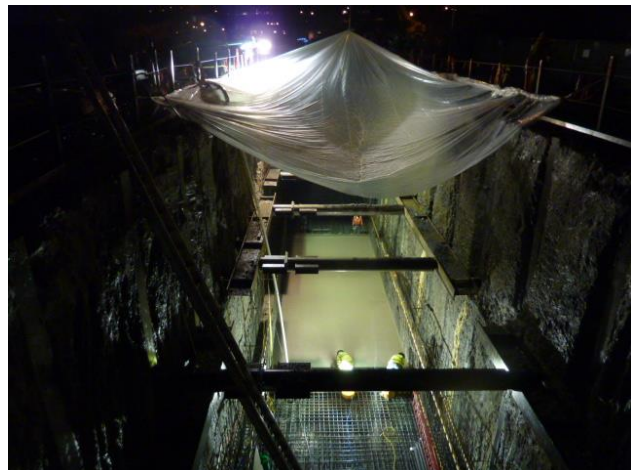
## Upcoming concrete pours & activities

Four more concrete pours are planned to install the CSO tank walls. The next pour will be on **Thursday, January 8**. We do not expect concrete work for the CSO to require work after 6 p.m. Additional concrete pours are **planned for January 15, January 22, and January 29**. We will keep you updated on the dates of these additional pours, and whether extended work hours will be needed. As a reminder, an overview of what to expect during concrete pours is included on the back.

Crews will start work on the structure that serves as a backup for CSO discharges when the North Beach Pump Station can't get all flows to Carkeek Park or through the main outfall. This structure allows excess stormwater and wastewater flows to be sent through a second pipe to the outfall on the beach. Most of the time, this pipe is carrying water from piped creeks through the outfall. Excavation, forming, and concrete pours for the new structure will begin in early January. Because this structure has more typical shoring, groundwater can get in and will need to be removed with pumps.



*The contractor completed pouring concrete for the base of the CSO tank on Tuesday, December 23.*



*Crews work to finish concrete pour work under a tarp in the heavy rains.*

### Did you know?

King County (then Metro) connected the North Beach Pump Station to the secondary outfall after sewer overflows in a large storm affected homes. Even with the new CSO Control facility at North Beach, this connection will remain in place to serve as a relief valve in extremely large or back-to-back storms that can overwhelm the storage, pump station, and main outfall. This relief valve is a safety measure to prevent backups into homes during extraordinary weather events.

*Continued on reverse*

**ALTERNATIVE FORMATS AVAILABLE**  
**206-477-5371 / 711 (TTY RELAY)**

# North Beach CSO Control Project



**King County**

Department of  
Natural Resources and Parks  
Wastewater Treatment  
Division

## Construction progress

- Concrete pours for the CSO tank base have been completed.
- Rebar placement to form the CSO walls will continue in preparation for the concrete pours in January.
- Work continues on the mechanical/electrical building, including adding gravel to the site (“backfill”) and additional concrete pours for the building structure. Concrete will be poured to form parts of the building on January 9.

## What to expect from upcoming activities

- Approximately 10 concrete trucks are expected to deliver concrete to the site on January 8.
- Trucks will be connected to a large concrete pump, which will pour concrete into the excavated tank area.
- Concrete trucks will remain running while in use. If trucks are not in use, they will be turned off.
- Pumps may be used to keep the excavation site dry. Neighbors may hear gurgling and other pump sounds during the day and at night. Crews will turn off the pumps if they are not needed.
- After sunset, lights will be used on site for worker safety. The team makes its best effort to reduce lights shining near neighbors’ homes, while maintaining safe work conditions for the construction crew.



*Crews finish a section of the CSO tank slab after the concrete is poured.*

## Questions? Comments? Concerns?

**24/7 Construction Hotline:**

**206-296-7372**

*Leave a message, and a project team member will return your call.*

### For more information

**Project Contact:** Monica Van der Vieren [monica.vandervieren@kingcounty.gov](mailto:monica.vandervieren@kingcounty.gov).

**Project Website:** [www.kingcounty.gov/environment/wtd/  
Construction/Seattle/NBeachCSOStorage](http://www.kingcounty.gov/environment/wtd/Construction/Seattle/NBeachCSOStorage)

**ALTERNATIVE FORMATS AVAILABLE**  
**206-477-5371 / 711 (TTY RELAY)**