

# North Beach CSO Control Project



**King County**

Department of  
Natural Resources and Parks  
Wastewater Treatment  
Division

## Weekly Construction Update – April 10, 2015

Crews continued backfilling (filling the excavated area on top of the underground tank, see photo to the lower right) for the combined sewer overflow (CSO) tank this week. Backfilling will continue through mid-April. The contractor is working with utility companies to schedule relocation of water, electric, and communications lines, which will continue through April.

Crews will be working this Saturday, April 11. Thanks for your continued patience and understanding with all of the activity on site.

### Construction progress and updates

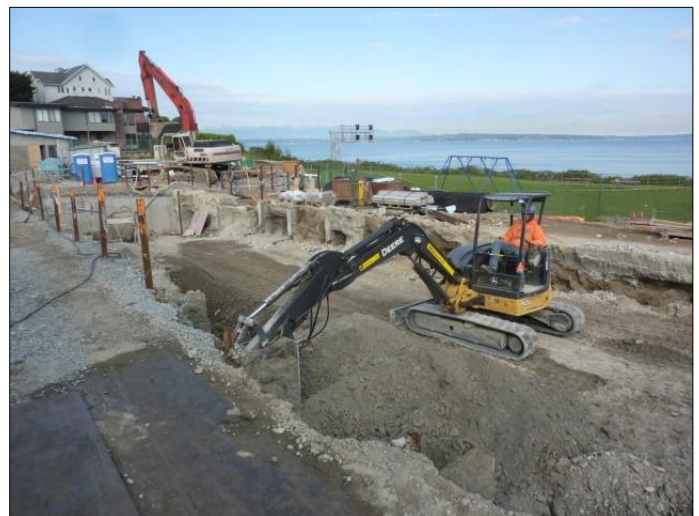
- *CSO Tank:* Backfilling will continue. Crews are also preparing for utility companies to be on site to reinstall utility lines.
- *Mechanical/electrical building:* This week crews continue interior work, including painting and installing ventilation equipment.
- *Site work:* Crews are working on installing pipe and manhole connections to the sewer system. Additional concrete pours are planned for mid-April.

### What to expect from upcoming activities

- During utility work, utility agencies and companies may have vehicles, crews, and equipment on or near the site. While they are on site to re-install utility lines, King County is not able to direct their work, where they park, or if their trucks are idling.
- Increased trucks coming to and from the site using the haul route to deliver backfill material.
- Two concrete trucks are expected to arrive on site for each of the upcoming concrete pours. Trucks will be connected to a large concrete pump, which will pour concrete into the excavated area. Concrete trucks will continue to run while in use. If trucks are not in use, they will be turned off.



*A view inside the underground CSO tank.*



*Backfilling the area above the CSO tank continues.*

### Questions? Comments? Concerns?

**24/7 Construction Hotline: 206-296-7372**

*Leave a message, and a project team member will return your call.*

**Project Contact:** Monica Van der Vieren, [monica.vandervieren@kingcounty.gov](mailto:monica.vandervieren@kingcounty.gov)

**Project Website:** [www.kingcounty.gov/environment/wtd/Construction/Seattle/NBeachCSOStorage](http://www.kingcounty.gov/environment/wtd/Construction/Seattle/NBeachCSOStorage)

**ALTERNATIVE FORMATS AVAILABLE**

**206-477-5371 / 711 (TTY RELAY)**