

North Beach CSO Control Project



King County

Department of
Natural Resources and Parks
Wastewater Treatment
Division

Final paving this week, intersection opening Monday, August 31

The contractor laid new asphalt earlier this week, and continues preparing the intersection to be **opened the morning of Monday, August 31**. Roadway site cleanup will continue on Friday and Saturday. Final roadway striping is weather dependent and may be delayed due to expected rain. If needed, temporary pavement markings will be installed.

Crews will be working this Saturday, August 28, to finish preparing for the intersection opening. The contractor does not expect to work Saturdays after August 28. We will notify the community if any additional Saturday work is required.

New intersection details

The intersection is now designed as a three-way stop, or “T-intersection” to improve safety for drivers, pedestrians, and cyclists traveling through the area. The map on the next page shows the new intersection design and traffic pattern, including:

- Three-way stop, with stop signs and “stop bars” painted on the roadway on Triton Drive NW, NW Neptune Place, and NW Blue Ridge Drive.
- NW Neptune Place and NW 100th Street returning to two-way traffic.
- The turning area at NW 100th Street and NW Neptune Place will be permanently closed, with orange barrels blocking the turn until it is restored. This area will be repaved in September, which will require additional work in this area.
- Full access to Blue Ridge Park.



Intersection on August 26, 2015. Crews are preparing the intersection for reopening on Monday, August 31.

Map on reverse shows new intersection layout.

Metro Route 18X returns to normal route

- Route 18X will return to the normal route on Monday, August 31. The intersection will open before the first morning routes. Crews will on site to remove remaining detour signage and barricades at 4 a.m. Monday morning for street opening and the first bus routes.
- All bus stops on 24th Avenue NW and 28th Avenue NW will reopen, except for the stop by King County’s North Beach Pump Station on Triton Drive NW. Metro will set up a temporary stop on Triton Drive NW, just south of NW Esplanade.
- The temporary bus stop near 24th Avenue NW and NW 98th Street will be closed starting the morning of Monday, August 31.
- The new, permanent bus stop in front of the North Beach Pump Station site will be complete by the end of September.

Continued work after intersection opening

- Single-lane closures will be required to complete landscaping, bus stop installation, and other final project elements. Flaggers will safely direct cars, pedestrians, and cyclists during these temporary lane closures.
- Work will continue on the North Beach Pump Station site, including finalizing system connections, finishing the mechanical/electrical building, and testing the new system.
- Landscaping vegetation will be planted by the end of September.

ALTERNATIVE FORMATS AVAILABLE

206-477-5371 / 711 (TTY RELAY)

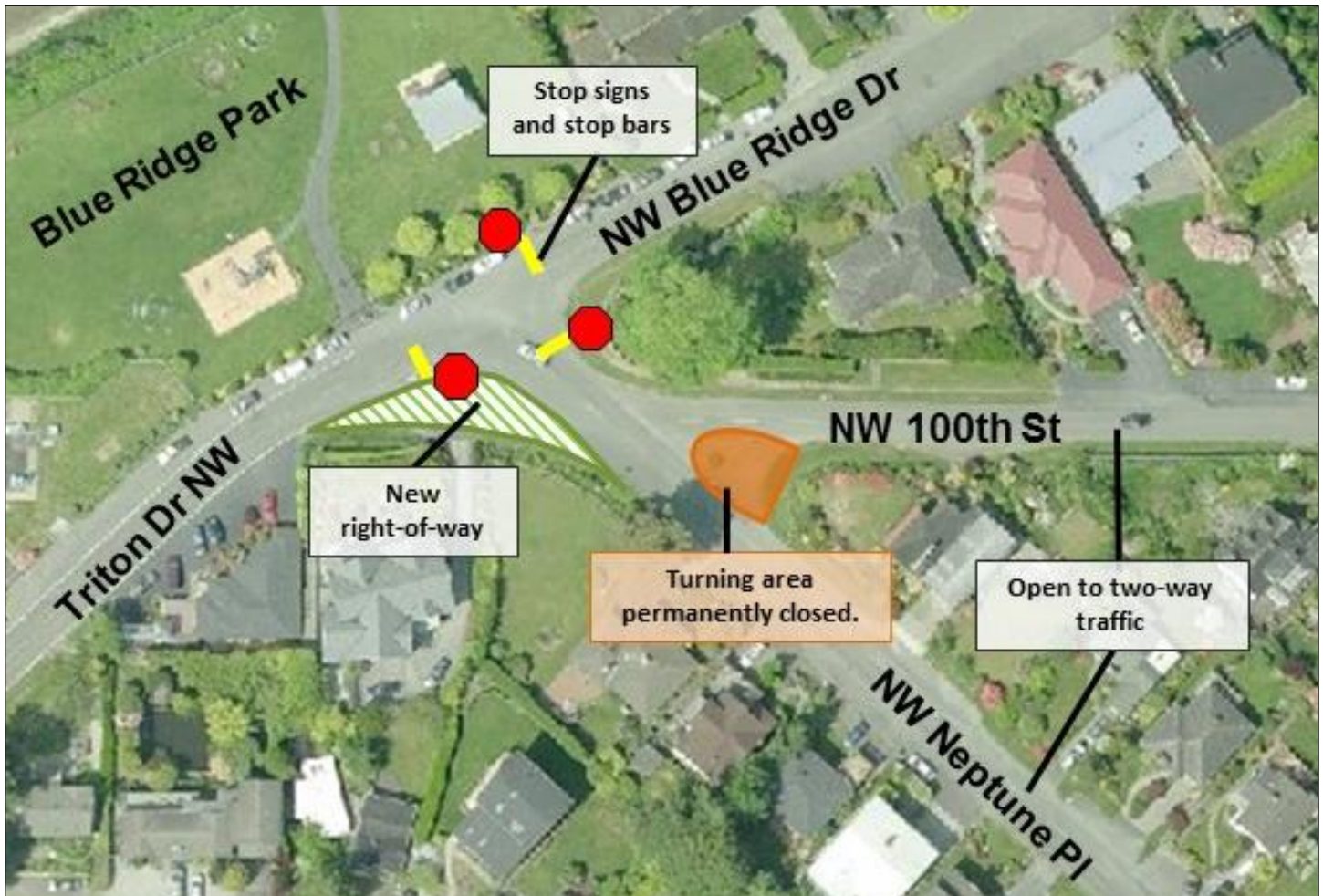
North Beach CSO Control Project



King County

Department of
Natural Resources and Parks
Wastewater Treatment
Division

New intersection layout. Map not to scale.



Questions? Comments? Concerns?

24/7 Construction Hotline: 206-296-7372

Leave a message, and a project team member will return your call.

Project Contact: Monica Van der Vieren, monica.vandervieren@kingcounty.gov

Project Website: www.kingcounty.gov/environment/wtd/Construction/Seattle/NBeachCSOStorage

ALTERNATIVE FORMATS AVAILABLE

206-477-5371 / 711 (TTY RELAY)