



## **King County investigation at North Beach continues - Beach area closed until further notice**

King County's investigation of the North Beach Pump Station facilities continued today Thursday, February 6. The County is following up after a sinkhole was observed next to the pump station on January 27. An initial excavation did not reveal the source of the problem.

County operators, engineers, and contractors will be on site continuing work to evaluate pipes associated with the North Beach Pump Station. Neighbors may see construction activity and the County's sewer inspection truck on King County's site.

The County has been testing water quality in the area as a precaution. All monitoring results have been reported to Public Health - Seattle & King County, which has recommended temporarily closing the beach due to high bacteria counts in recent samples. The area is posted with signs and the Washington Department of Ecology has been notified. The beach will remain closed until the situation at the North Beach Pump Station is identified and resolved, and bacteria levels in water quality samples have returned to safe levels.

King County's response team thanks everyone for your patience while the investigation's field work continues. We will continue to provide updates.

This investigation work does not involve the Combined Sewer Overflow (CSO) storage facility that went into operation in 2015. The storage facility continues to operate as designed, reducing overflows during large storms to help protect Puget Sound..

### **For more information**

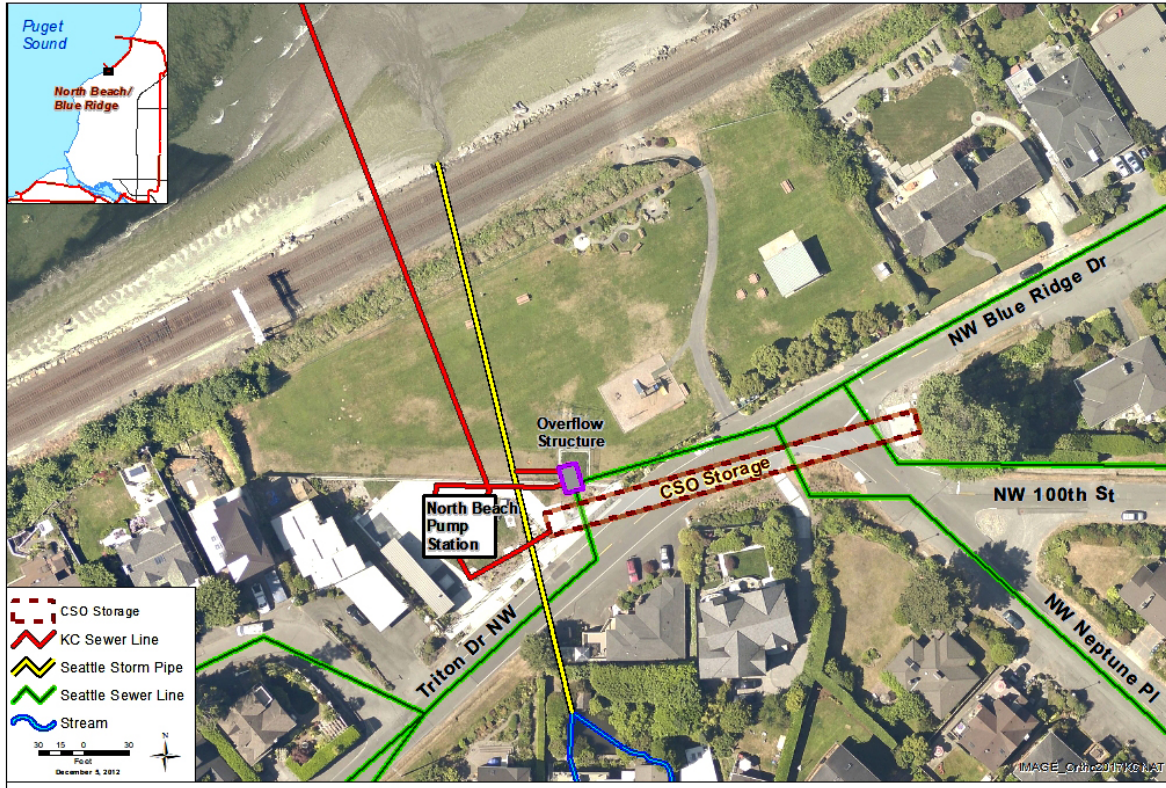
To learn about the facilities at North Beach, visit the Web:

[www.kingcounty.gov/depts/dnrp/wtd/capital-projects/completed/north-beach-cso-control.aspx](http://www.kingcounty.gov/depts/dnrp/wtd/capital-projects/completed/north-beach-cso-control.aspx)

**If you have questions or concerns, please contact Monica Van der Vieren at 206-477-5502 or [monica.vandervieren@kingcounty.gov](mailto:monica.vandervieren@kingcounty.gov)**



## Map of North Beach Pump Station area with City and County facilities



**ALTERNATIVE FORMATS AVAILABLE**  
206-477-5371 / 711 (TTY Relay)