



Work at North Beach Pump Station Saturday, Feb. 8

King County will be performing work at the North Beach Pump Station facilities on Saturday, February 8. The County is following up after a sinkhole was observed next to the pump station on January 27. After an initial excavation did not reveal the source of the problem, the County's team and contractor have continued testing. Work has proceeded carefully to protect the operating facilities.

The County's response team has identified an area that will be excavated beginning Saturday morning. County operators, engineers, and contractors will be on site. Pipe repair materials and clean fill have been delivered on Friday to prepare for any pipe repair that may be needed.

What neighbors can expect

- Crews will be on site at about 8:00 a.m. but will not begin work until 9 a.m.
- Depending on conditions, work may proceed into the evening. We will provide updates as work progresses tomorrow.
- People will see vehicles, equipment, and trucks coming and going from the work site at 9921 Triton Drive NW.
- Traffic will be directed around the site. **Please drive slowly and obey any signs or flaggers.**

If you have questions or concerns, please contact Monica Van der Vieren at 206-477-5502 or monica.vandervieren@kingcounty.gov

The North Beach Pump Station and force main were built in the 1960's to carry wastewater from the North Beach/Blue Ridge area to Carkeek Wet Weather Treatment Facility. From Carkeek, the wastewater travels to West Point Treatment Plant.

King County added a storage tank and odor control to the existing North Beach Pump Station to reduce overflows of untreated stormwater and sewage into Puget Sound during large storms. Those facilities went online in 2015 and continue to operate.

The County has been testing water quality in the area as a precaution. All monitoring results have been reported to Public Health - Seattle & King County, which has recommended temporarily closing the beach due to high bacteria counts in recent samples. The area is posted with signs and the Washington Department of Ecology has been notified. The beach will remain closed until the situation at the North Beach Pump Station is identified and resolved, and bacteria levels in water quality samples have returned to safe levels.



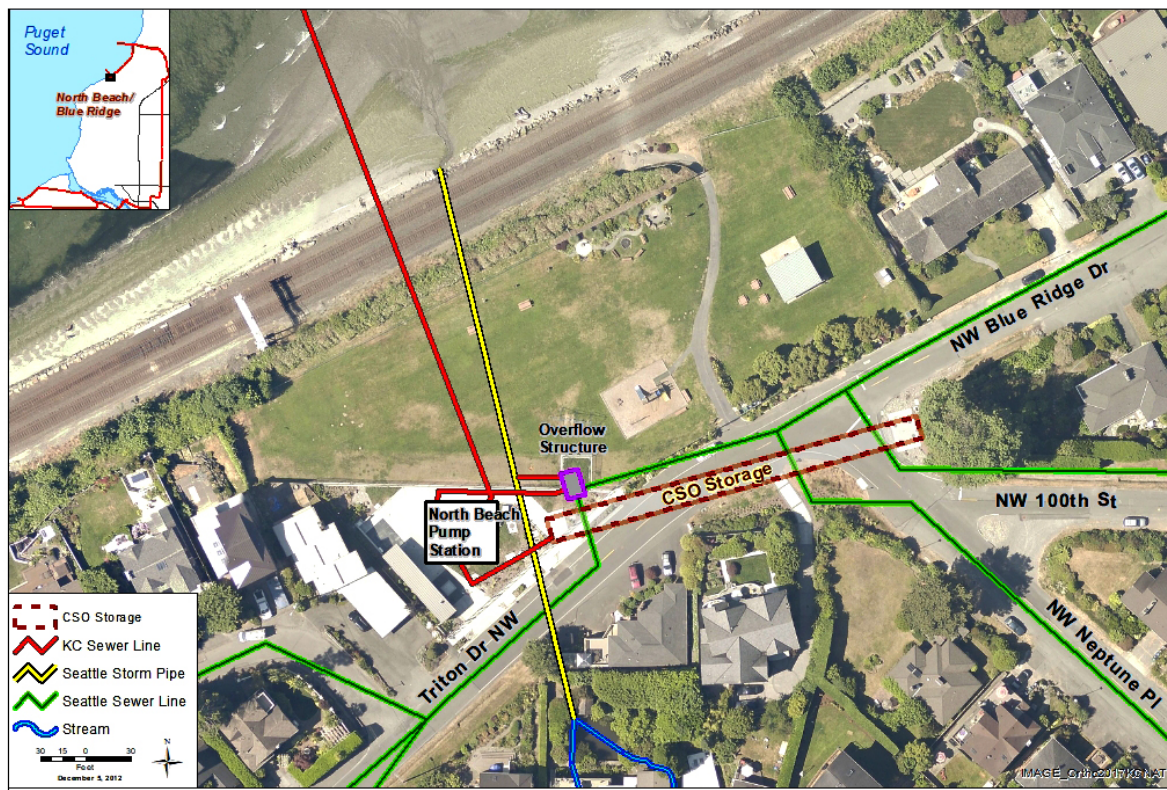
King County's response team thanks everyone for your patience while the investigation's field work continues. We will continue to provide updates.

For more information

To learn about the facilities at North Beach, visit the Web:

www.kingcounty.gov/depts/dnrp/wtd/capital-projects/completed/north-beach-cso-control.aspx

Map of North Beach Pump Station area with City and County facilities



ALTERNATIVE FORMATS AVAILABLE
206-477-5371 / 711 (TTY Relay)