



## **Investigation continues at North Beach Pump Station Sunday, Feb 9**

King County will be continuing investigation at the North Beach Pump Station facilities on Sunday, February 9. The County is following up after a sinkhole was observed next to the pump station on January 27. Work has proceeded carefully to protect the operating facilities.

On Saturday, Feb. 8, the County's response team uncovered the pipe extending from the pump station fence across Blue Ridge Park. The pipe was found to be intact, and soils are clean, compact, and dry around the pipe. No pipe repair was needed, but repair materials may remain stored on site as a precaution. The contractor backfilled the area around the pipe, and will begin restoration of that area on Monday, Feb. 10.

The County's team is continuing to investigate, and we will keep the community up to date.

### **What neighbors can expect**

- The County's inspection truck will be on site Sunday.
- People will see vehicles, equipment, and trucks coming and going from the work site at 9921 Triton Drive NW.
- Traffic will be directed around the site. Please drive slowly and obey any signs or flaggers.

**If you have questions or concerns, please contact Monica Van der Vieren at 206-477-5502 or [monica.vandervieren@kingcounty.gov](mailto:monica.vandervieren@kingcounty.gov).**

The North Beach Pump Station and force main were built in the 1960's to carry wastewater from the North Beach/Blue Ridge area to Carkeek Wet Weather Treatment Facility. From Carkeek, the wastewater travels to West Point Treatment Plant.

King County added a storage tank and odor control to the existing North Beach Pump Station to reduce overflows of untreated stormwater and sewage into Puget Sound during large storms. Those facilities went online in 2015 and continue to operate.

The County has been testing water quality in the area as a precaution. All monitoring results have been reported to Public Health - Seattle & King County, which has recommended temporarily closing the beach due to high bacteria counts in recent samples. The area is posted with signs and the Washington Department of Ecology has been notified. The beach will remain closed until the situation at the North Beach



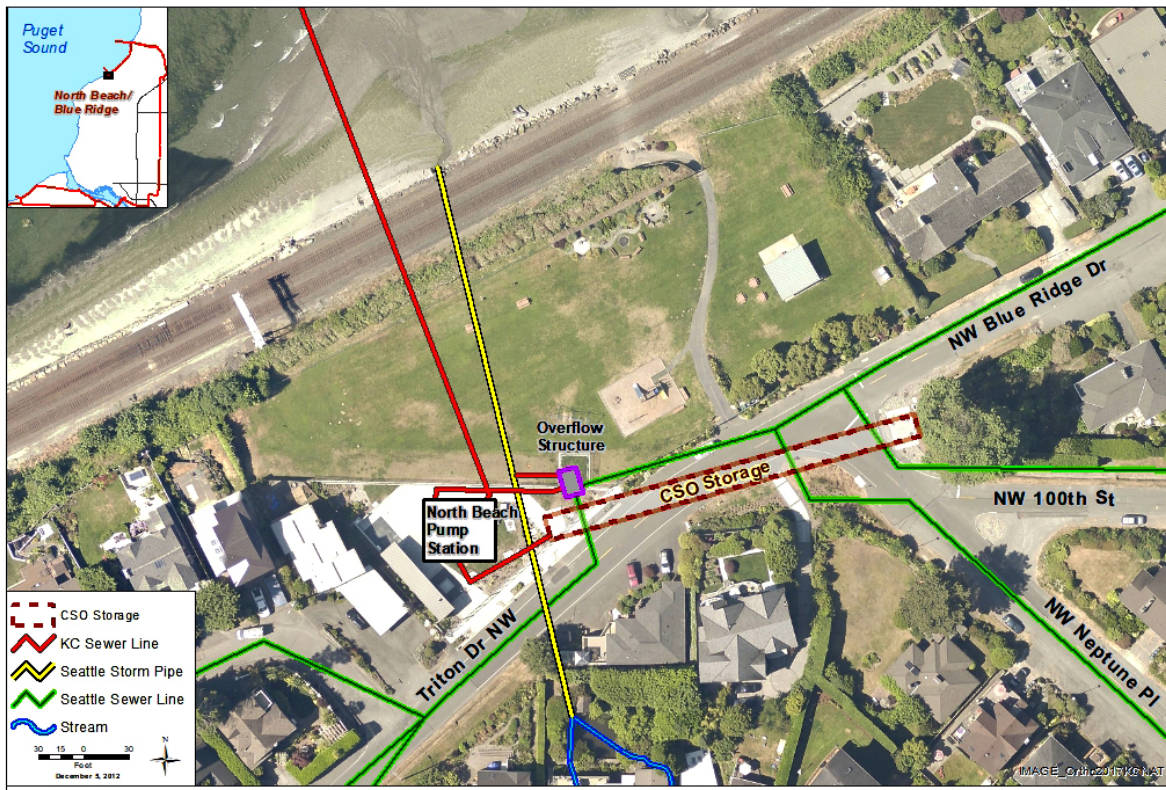
Pump Station is identified and resolved, and bacteria levels in water quality samples have returned to safe levels.

### For more information

To learn about the facilities at North Beach, visit the Web:

[www.kingcounty.gov/depts/dnrp/wtd/capital-projects/completed/north-beach-cso-control.aspx](http://www.kingcounty.gov/depts/dnrp/wtd/capital-projects/completed/north-beach-cso-control.aspx)

### Map of North Beach Pump Station area with City and County facilities



**ALTERNATIVE FORMATS AVAILABLE**

206-477-5371 / 711 (TTY Relay)