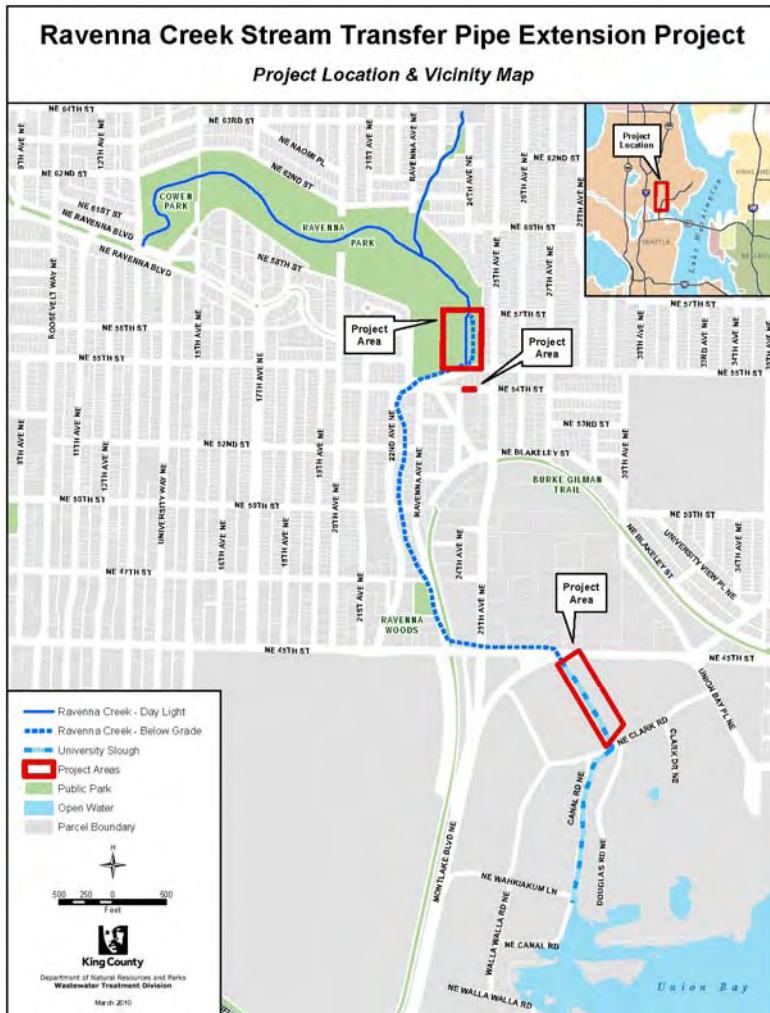




Ravenna Creek Transfer Pipe Extension Project Scheduled to Begin June 2010

King County's project will isolate Ravenna Creek flow within a pipe installed in an underground box culvert that now conveys creek flows. The county has learned that this box culvert may receive sewer overflows during large storms. The "pipe in culvert" design allows normal creek flows to travel through the system to University Slough without risk of sewage cross-contamination during periods of heavy rain. Sewer overflows would continue downstream in the box culvert to the county's Laurelhurst Trunk and on to the West Point Treatment Plant.

King County has worked closely with Seattle Public Utilities during project design. The county will continue to monitor the system for two years following construction. All areas affected by project construction will be restored to previous condition. In addition, King County will carry out two vegetation projects as part of permit required mitigation. A State Environmental Policy Act (SEPA) Determination of Nonsignificance (DNS) was issued for the project on March 16, 2010.



For more information

Visit the project Web page

www.kingcounty.gov/environment/wtd

Attend a public meeting

April 13, 2009 6:00-8:00 p.m.

Ravenna Eckstein Community Center

6535 Ravenna Ave NE
Seattle, WA 98115

Contact Us

206-263-7301

Project Schedule

SEPA Comment period

March 16-April 2, 2010

Contracting

Spring 2010

Construction

Beginning late June 2010

Restoration

October, 2010

Mitigation projects

Fall 2010



What to Expect

Construction in the park area will be limited to the southeast portion of the park, with limited street area required for equipment and truck access.

- The ballfield will be closed for use during the summer and early fall of 2010. Summer users will be scheduled on nearby alternate fields.
- Excavation in the park will be carried out for up to six weeks. Pumps and generators will be required for dewatering during excavation.
- To protect public safety, there will be some pedestrian and trail detours around the construction area and truck entrance.
- Some street parking will be eliminated temporarily during construction.
- A temporary creek bypass is necessary. Surface creek flows in the park will not be affected. Underground flows will be diverted to the county sewer.

