

RAVENNA CREEK



King County

Department of Natural Resources and Parks
Wastewater Treatment Division

3 STORY APARTMENT BUILDING

PIPE EXTENSION PROJECT

SUMMER 2010

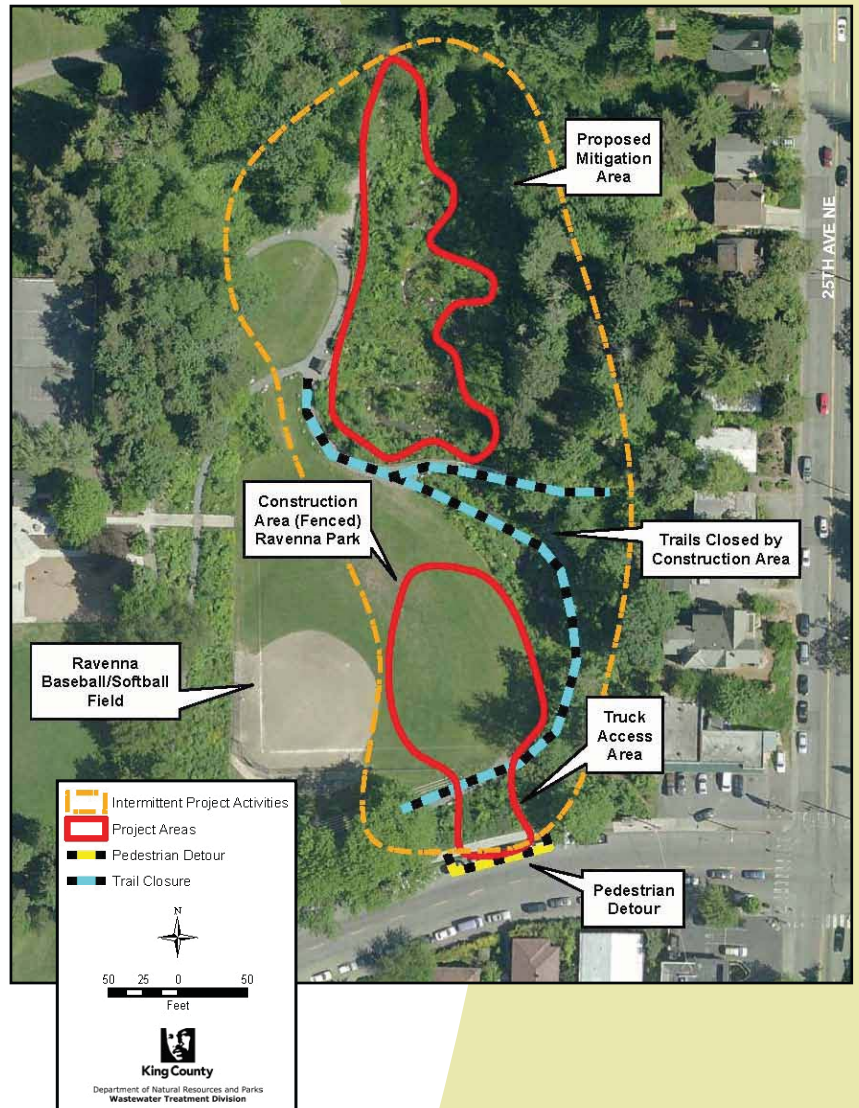
RAVENNA CREEK PIPELINE CONSTRUCTION BEGINS AUGUST 2010

King County will begin work to extend a pipe conveying Ravenna Creek through Ravenna Park into the University Slough and Lake Washington in August 2010. King County is responsible for conveying and treating wastewater from 17 sewer districts and 17 cities including Seattle. Wastewater from residences and businesses collected by the City of Seattle is transported to the county's West Point Treatment Plant in Magnolia through pipes owned by the county.

This project protects public health and the environment by isolating creek flow from the wastewater stream and eliminating the potential for sewer overflows into University Slough on the University of Washington campus.

Construction and restoration activities will last until October 2010.

Public art from the Ravenna Creek Daylighting Project will be protected or removed and returned after construction is complete.



PROJECT SCHEDULE	June	July	August	September	October
Pre-construction neighborhood surveys conducted					
Construction in Ravenna Park and along NE 54th Street					
Restoration of ball field, plantings, other park features					
Mitigation projects, including removing invasive weeds (this work continues throughout 2010)					

For more information call 206-205-9890 or visit the Project Web page:
www.kingcounty.gov/environment/wtd/Construction/Seattle/RavennaCkPipeExtension.aspx

Creating Resources from Wastewater

WHAT TO EXPECT DURING CONSTRUCTION (AUGUST – OCTOBER 2010)

- Heavy machinery, construction materials and excavation equipment in the outfield of the Ravenna Park ball field (see map).
- Increased noise, dust and activity coming from the construction site.
- No public access to the Ravenna Park ball field or the ball field stairs.
- Reduced access to the trails and creek near the ball field.
- Reduced parking, increased congestion along NE 55th Street.
- Increased truck traffic, construction equipment, limited parking and single lane traffic on NE 54th Street during work to reconfigure a sewer manhole.

SCHEDULE AND WORK HOURS

- Construction work hours will typically be Monday – Friday, 7:00 a.m. to 5:00 p.m.
- Excavation activities in the park will last six weeks. Pumps and generators will operate every day around the clock to control ground water and allow for work to occur below grade.
- Mitigation projects in the park including removal of invasive weeds will continue throughout the fall.

PEDESTRIAN DETOURS AND PARKING

- To protect public safety, there will be pedestrian and trail detours around the construction area and truck entrance. The sidewalk along on north side of NE 55th Street will have a pedestrian detour in place for most of the construction period.
- Some street parking along NE 55th Street and NE 54th Street will be eliminated temporarily during construction.

King County urges park users, pedestrians, bus riders, bicyclists and motorists to use extreme caution when passing by the construction site.

TEMPORARY CREEK BYPASS

To allow for construction activities in the box culvert (see project overview graphic on the right) below grade creek flows will be diverted to the county sewer. Surface creek flows in the park will not be affected.

FOR MORE INFORMATION

Visit the project Web page at <http://www.kingcounty.gov/environment/wtd/Construction/Seattle/RavennaCkPipeExtension.aspx>

For questions or concerns during construction:

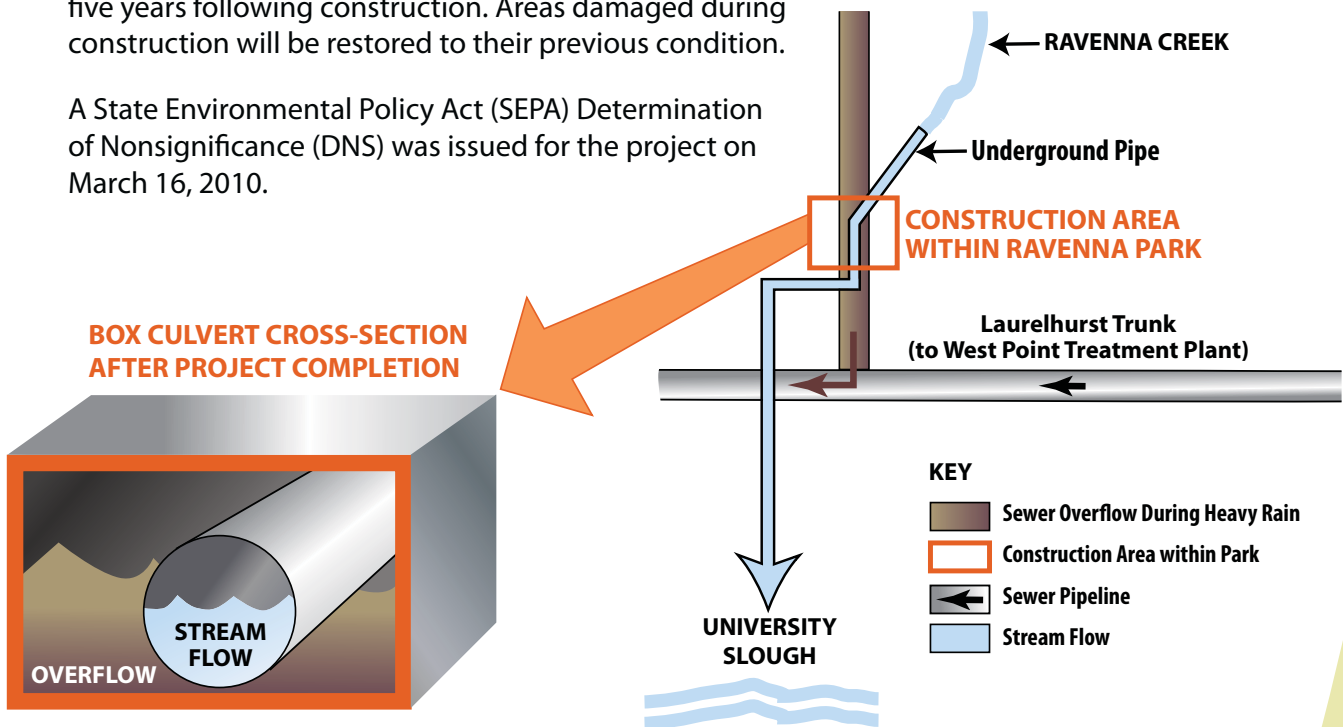
Call our 24-hour construction hotline at 206-205-9890. Your message alerts project staff carrying a pager and they will return your call promptly.

PROJECT OVERVIEW

This project will prevent sewer overflows into University Slough by isolating Ravenna Creek flows within a pipe. The Ravenna Creek Daylighting Project completed in 2004 used a box culvert believed to be abandoned to divert flows from the King County wastewater conveyance system to the University Slough. The county has since learned that the box culvert has the potential to receive sewer overflows during heavy rains. Extending the pipe carrying creek flow through the box culvert will allow the creek to travel through the system to University Slough without risk of sewage contamination. Sewer flows in the box culvert will continue to the county's Laurelhurst Trunk for treatment at the West Point Treatment Plant in Magnolia.

King County worked closely with Seattle Public Utilities (SPU) during project design to ensure compatibility with existing stormwater systems. The pipeline extension will be monitored for five years following construction. Areas damaged during construction will be restored to their previous condition.

A State Environmental Policy Act (SEPA) Determination of Nonsignificance (DNS) was issued for the project on March 16, 2010.



Pipe extension eliminates potential for sewage entering creek flow

MITIGATION PROJECTS

As part of permit-required mitigation King County will remove invasive weeds and replace native plants in some areas around the Ravenna Creek Daylighting Project in the south end of Ravenna Park. King County will also remove invasive weeds and replace failed plantings along University Slough on the University of Washington campus between Northeast 45th Street and Clark Road. This work will occur in Fall 2010.



**Department of
Natural Resources and Parks
Wastewater Treatment Division**
King Street Center
KSC-NR-0503, 201 S. Jackson St.
Seattle, WA 98104-3855

Creating Resources from Wastewater

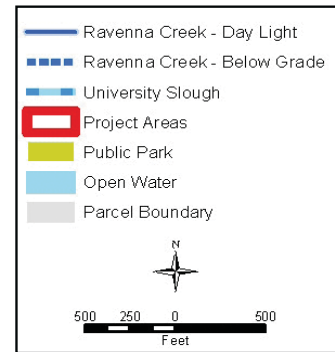
Alternative formats available

206-684-1280 or TTY Relay: 711

Printed on recycled paper. Please recycle. 1202M
Produced by King County DNRP, WLRD, GIS/VC & Web Unit
1006_RavennaPipe.indd skrau, mdev, wgab



RAVENNA CREEK PIPE EXTENSION CONSTRUCTION BEGINS AUGUST 2010



FOR MORE INFORMATION

Visit the project Web page at <http://www.kingcounty.gov/environment/wtd/Construction/Seattle/RavennaCkPipeExtension.aspx>

For questions or concerns during construction:

Call our 24-hour construction hotline at 206-205-9890. Your message alerts project staff carrying a pager and they will return your call promptly.

