

**July 11, 2014**

## **Overnight work in the Magnolia Bridge/Smith Cove area** *Alternating ramp closures continuing week of July 14*

King County's contractors are constructing a new combined sewer overflow (CSO) control facility in the Smith Cove/Terminal 91 area of South Magnolia. This 1.5-million-gallon underground tank will store excess flows of stormwater and sewage when heavy rains fill pipes, reducing untreated overflows to Puget Sound. A 3,000-foot long gravity sewer pipeline will carry excess flows from 32<sup>nd</sup> Avenue West to the storage tank on 23<sup>rd</sup> Avenue West.

As part of this work King County's contractor will install a sewer line under the Magnolia Bridge to connect the CSO facility to the County's existing sewer line on Port of Seattle property north of the bridge. This work will require trenching through the on- and off-ramps, which will be closed one at a time. Work will continue the week of July 14, and may extend to the week of July 21.

This work will be performed overnight from 7 p.m. to 7 a.m. during lower traffic periods. During this time, access to the Elliott Bay Marina, Palisade and Maggie Bluffs restaurants via the Magnolia Bridge will be maintained. Travel to and from 15<sup>th</sup> Avenue West and the Magnolia community will also be maintained. See detour route maps on the back of this flier.

### **What you can expect during overnight detours**

- Detours around Magnolia Bridge ramps for several nights
- Flaggers and signs to direct motorists, pedestrians, and bicyclists around closure
- Metro Transit routes 19, 23, and 33 will maintain regular service
- Traffic delays

### ***Use caution, stay safe***

**Drive slowly through the work area and follow directions from flaggers.**



### ***Check daily Web updates and the construction hotline***

Check the Web at [www.kingcounty.gov](http://www.kingcounty.gov) and search "South Magnolia CSO" or scan the QR code with a smartphone.

Call our 24-hour construction hotline for the latest recorded message about schedule and progress. Leave a message with questions or concerns, and we will call you back shortly.

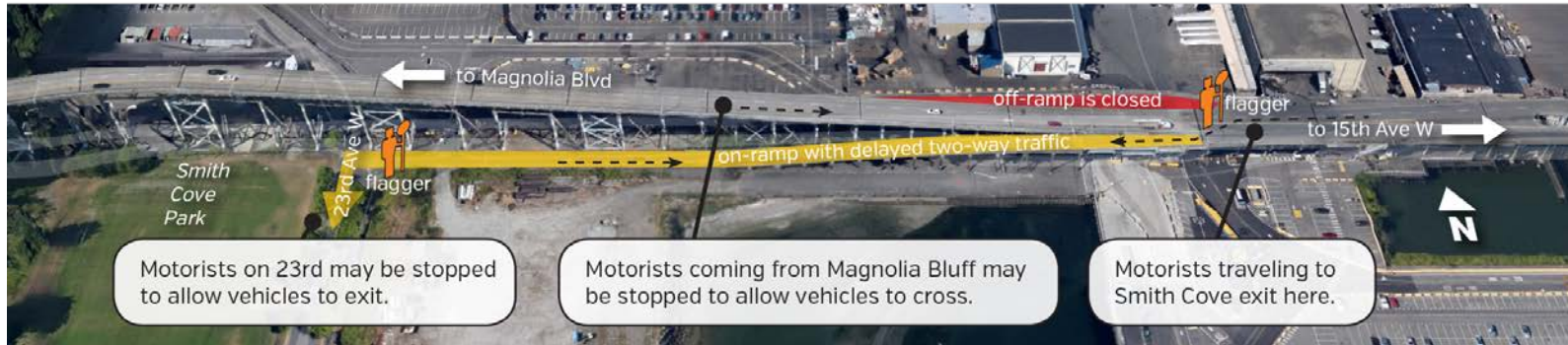
***24-hour construction hotline***  
**206-205-0968**

# Overnight work in the Magnolia Bridge/Smith Cove area

## *Alternating ramp closures beginning July 7*

### On-ramp detour

*When off-ramp is closed (north side of bridge)*



When the off-ramp on the north side of the bridge is closed, traffic in both directions will be directed to the on-ramp. Flaggers will direct traffic through the detour. Expect some delays.

### Off-ramp detours

*When on-ramp is closed (south side of bridge)*



When the on-ramp on the south side of the bridge is closed, traffic in both directions will be directed to the off-ramp. Flaggers will direct traffic through the detour. Expect some delays.