

Construction Update

September 7, 2018

Construction continues for outfall and treatment station; Conveyance contractor onboard

King County's Wastewater Treatment Division (WTD) is building a new wet weather treatment station in Georgetown at the corner of Fourth Avenue South and South Michigan Street. As part of the Wet Weather Treatment Station project, WTD is also building a new outfall structure under the First Avenue South Bridge and connecting pipes from the station to the outfall. Read below for updates about all three parts of the project!

Treatment Station Secant piling is complete!

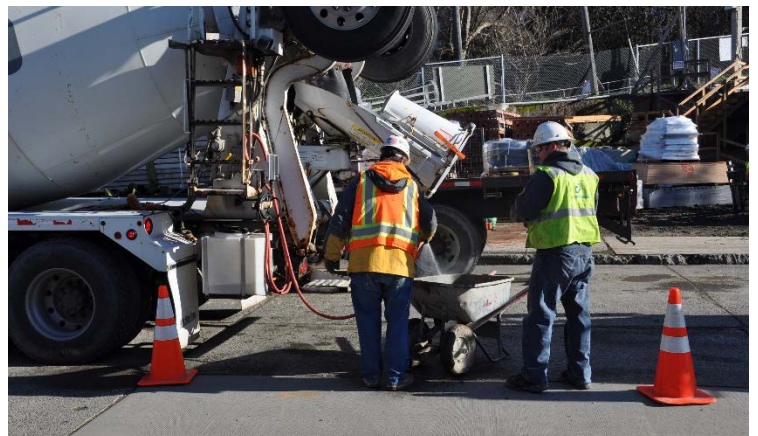
The structural wall for the underground Influent Pump Station, which will help to move flows into the station, is in place. Crews placed 104 secant piles to complete the wall. The wall will keep soil in place as excavation for the pump station begins in September.

Around the site, crews are pouring concrete where pipes will be placed. The concrete will support the pipes underground and keep them in place. Before the pour, rebar forms are installed to hold the concrete.

Outfall Pipe installation and sheet piling continue

Construction continues on the Outfall structure. Right now, crews are working on the structure that will help control water flows into the Duwamish River and prevent erosion. Concrete pours to form the structure have begun. Sheet piling activities are planned to continue intermittently through the fall as surrounding pipes are installed.

Concrete pours and excavation activities for the station and outfall are planned to continue through fall 2018. Increased truck traffic in and out of the site is expected during concrete pours.



Crews are pouring concrete at the station and outfall construction sites through fall 2018.

For more information:

Visit the project website: www.kingcounty.gov/GeorgetownWWTS

24/7 Project hotline: 206-205-9286

SMS updates: Text "King GeorgetownWWTS" to 468311

Contact Bibiana Ocheke-Ameh:

Bibiana.Ocheke-Ameh@kingcounty.gov

Conveyance Pipes Contractor Onboard

James W. Fowler Company has been awarded the contract to build the underground conveyance pipes that will connect the station to the new outfall structure. We'll share more information later this year as we begin to prepare for construction, expected to start in late 2018.

What to expect during construction:

- Excavation activities and concrete pours continue at both construction sites through fall 2018.
- Increased truck traffic going in and out of both construction sites.
- Increased noise and vibration levels as sheet piles are installed at the outfall structure site.
- Work completed weekdays between normal work hours, 7 a.m. to 6 p.m.
- Drills, pumps, excavators, cranes and trucks working on project sites.
- Hotline staffed 24/7.

Project Highlight

Students Learn about Construction, Careers in Wastewater at Georgetown Wet Weather Treatment Station (GWWTS)

A group of students from Tahoma High School visited the GWWTS construction site in July to learn what happens during construction and see the trades in action. In addition to informing students about the design and purpose of the GWWTS project, Wastewater Treatment Division (WTD) construction staff provided an overview of job opportunities in the industry. WTD community relations lead on the project was also on hand and provided students information on careers in wastewater.

King County partnered with Apprenticeship and Non-Traditional Employment for Women (ANEW), a pre-apprenticeship training provider open to all genders, to bring the students to GWWTS. As part of a class offered by ANEW, students expressed interest in the construction industry and chose the GWWTS site to explore different options available in the trade. The site tour took place in coordination with the County's Labor Equity Program Manager, Samantha Kealoha.



For more information:

Visit the project website: www.kingcounty.gov/GeorgetownWWTS

24/7 Project hotline: 206-205-9286

SMS updates: Text "King GeorgetownWWTS" to 468311

Contact Bibiana Ocheke-Ameh:

Bibiana.Ocheke-Ameh@kingcounty.gov