



## King County

Department of Natural Resources and Parks  
**Wastewater Treatment Division**

201 S. Jackson St., KSC-NR-0500  
Seattle, WA 98104-3855

### Find out what's happening at the Georgetown Wet Weather Treatment Station!

- **Sign up for regular project updates** by visiting our Public Involvement page [kingcounty.gov/georgetownWWTS](http://kingcounty.gov/georgetownWWTS).
- **Take a virtual tour of our site** by going to [youtu.be/x1s-Rb\\_pNvQ](https://youtu.be/x1s-Rb_pNvQ).
- **Attend virtual briefings\*** for near neighbors to learn more about what to expect during construction, ask questions or share concerns.
- **Attend neighborhood meetings\*** to learn about project progress during construction.
- **Read about project updates** in the *Georgetown Gazette*.
- **Call our project hotline** with questions or concerns 24 hours a day/7 days a week, **206-205-9286**.

\* Following the guidance of Seattle-King County Public Health, King County will not host in-person public meetings until further notice.



### For questions, comments, more information, or to request a briefing, please contact:

**Bibiana Ocheke-Ameh**  
206-205-9286  
[Bibiana.Ocheke-Ameh@kingcounty.gov](mailto:Bibiana.Ocheke-Ameh@kingcounty.gov)  
[kingcounty.gov/georgetownWWTS](http://kingcounty.gov/georgetownWWTS)



## King County

Alternative formats available  
206-477-5371 or TTY relay: 711

Este texto brinda información sobre la estación de tratamiento Georgetown Wet Weather Treatment Station. Para obtener más información, llame al 206-205-9286, deje un mensaje con su número telefónico e indique su idioma. Se le proporcionará un intérprete de forma gratuita.

该文披露, “乔治城潮湿天气应对工作站 (Georgetown Wet Weather Treatment Station) 已经选定在乔治城附近。如需更多信息, 请拨打 206-205-9286 留言, 留下您的电话号码和您的语言。将提供免费翻译。

PRSRT STD  
US POSTAGE  
**PAID**  
SEATTLE, WA  
PERMIT NO. 836

Printed on recycled stock. Please recycle. 1202M  
File: 2106\_11608E\_Georgetown\_Wet-Weather\_Treatment\_Station\_Newsletter.indd

@KingCountyWTD



## GEORGETOWN Wet Weather Treatment Station



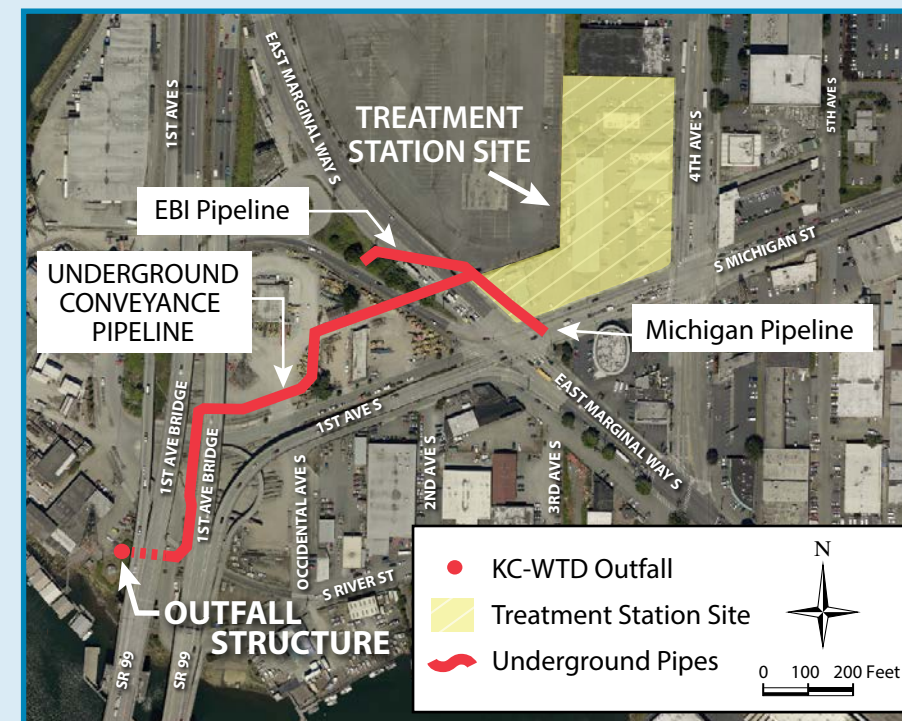
**Protecting Our Waters**  
*Doing our part on rainy days*

## Protecting the Duwamish River: SUMMER 2021 NEWSLETTER

### Construction of conveyance pipeline and outfall structure is complete!

In May 2021, crews successfully finished installing underground pipes called conveyance pipes. The pipes will carry the treated flows from the station to the new outfall structure.

The outfall structure, which is located under the First Avenue South Bridge was completed in March 2020. It will release treated flows into the Duwamish River when operational. After completing the outfall structure, crews installed native plants and logs around the outfall site to prevent erosion, stabilize the riverbank, and improve wildlife habitat.



Project Elements



Restoring landscape around outfall structure.

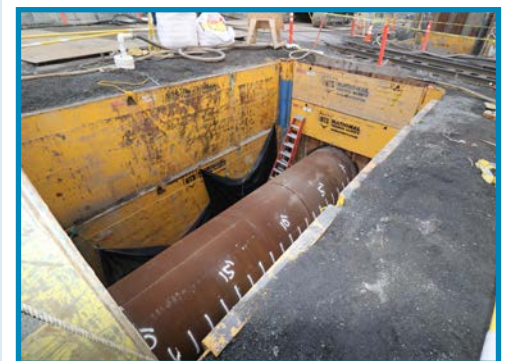
### ABOUT THE PROJECT

Since 2018, King County Wastewater Treatment Division (WTD) has been building the Georgetown Wet Weather Treatment Station, a combined sewer overflow (CSO) treatment station on the corner of 4th Avenue South and South Michigan Street in the Georgetown neighborhood. When constructed, the station will treat up to 70 million gallons of combined runoff and sewerage per day during heavy rains before safely discharging back into the Duwamish River.

### Want to stay up to date on project progress?

Check out the Construction page for more progress photos:  
<https://bit.ly/2I1lo6j>

Sign-up for email updates on the Public Involvement page to receive project updates and see construction videos of progress:  
<https://bit.ly/2sHdOYb>



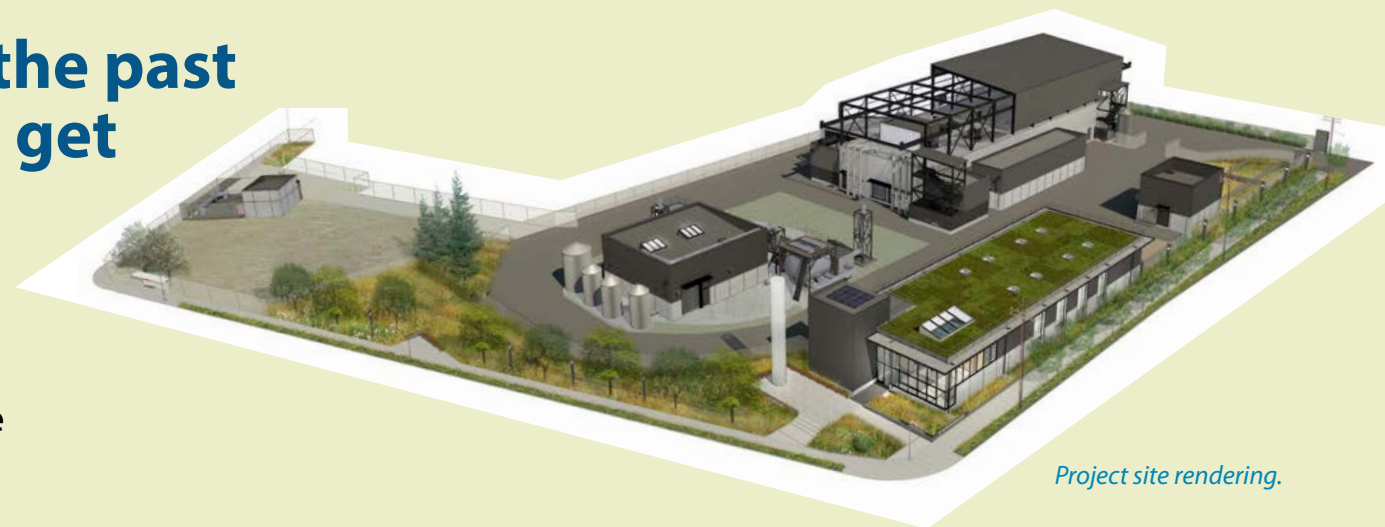
*Look inside to see how our community helped create the treatment station and make our construction site beautiful!*



# Thank you for working with us the past 7 years! We are so excited as we get closer to the finish line in 2022!

Over the years, the community has been very important to the development of the treatment station. We've enjoyed working with the community and partnering with organizations on some unique projects and events. Here are some of our favorite highlights:

- 2015 Design Advisory Group and online surveys to understand the community's values of environmental and social sustainability, which influenced the final design.
- Hanging out with you during the Garden Walk and sharing information at Georgetown Community Council Meetings.
- Partnering with the Nature Consortium and Maple Elementary on an eight-week curriculum about the Duwamish watershed and water art techniques. The art created by the students has made the fence around our construction site beautiful the past few years.
- Celebrating our groundbreaking event at the construction site (pre-COVID 19 pandemic).



Project site rendering.



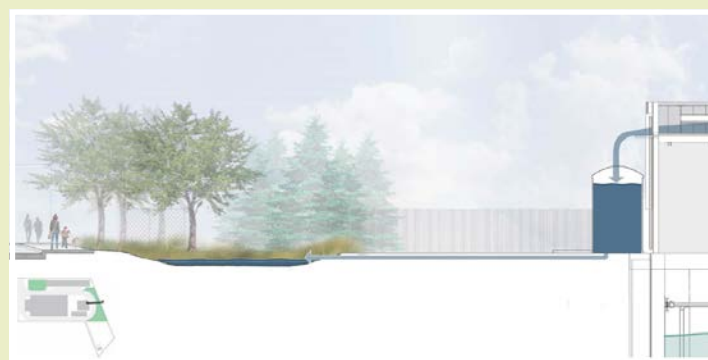
Tahoma High school students site tour.



Groundbreaking event.



Georgetown garden walk.



Cisterns.



Maple Elementary School students art.



Example of education space.

## How the station helps the community

The wet weather treatment station will have many environmental and community benefits:

- **Cisterns** will use natural processes to manage stormwater. Drains from rooftops attach to above ground containers, or cisterns, which collect and store rainwater. Collected rainwater will be used on vegetation. Cisterns also reduce water entering the sewer system at the site.
- **A green, or vegetated roof** will be installed on the mechanical and operations building. With layers of vegetation and soil, the green roof will use plants to collect and filter stormwater. It also will keep the building cooler in the summer and warmer in the winter.
- **Meeting space** in the operations and maintenance building will provide opportunities for WTD to host community educational activities.
- **Informational signage** will be installed around the site with information about how the treatment station works, art and sustainability.

## Construction at the treatment station is progressing

Work at the treatment station continues and is expected to wrap up in 2022 (can you believe it?!). Crews have been busy putting structures up, installing electrical conduits and finalizing concrete work.



### What to expect during construction:

- Security fencing and erosion and sediment control around the project sites
- Noise and vibrations typical of a construction worksite: We will do our best to notify the nearby neighbors of construction activities beforehand and share updates when they are known.
- 24-Hour hotline 206-205-9286