

# **Design Advisory Group Meeting #4**

*Thursday, June 18, 2015*

*6:00 p.m. – 8:00 p.m.*

**GEORGETOWN**  
*Wet Weather Treatment Station*

 **King County**  
**Protecting Our Waters**  
*Doing our part on rainy days*

# Public Comment

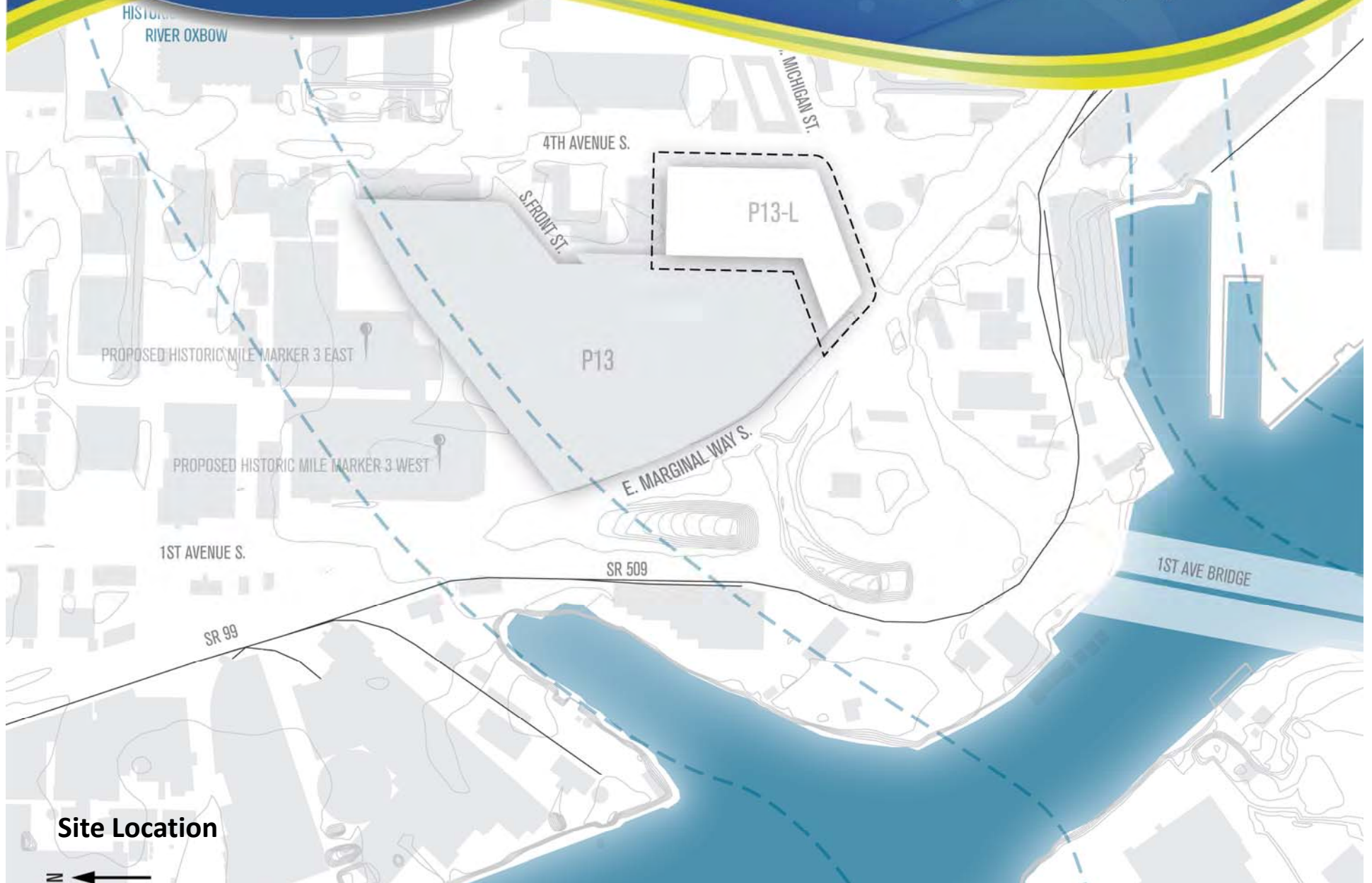
## Design Guidelines

- Reflect the individual character of the neighborhood; from whimsical to hard working, industrial to residential, and hand made to natural systems.
- Enhance air and water quality while making both natural and treatment processes visible.
- Enhance the understanding of public wastewater infrastructure through education and employment opportunities.
- Balance the public and private spaces to meet the needs of the utility and the community.
- Acknowledge the place, history, color palette, and transformations over time in Georgetown.
- Humanize the design by expressing craft, grit, and elegance at all scales, resulting in a place of neighborhood pride.
- Create a facility that is environmentally and socially sustainable through conservation, efficiency and stewardship.
- Reflect the value of and connection to the Duwamish River and its benefits for the region.

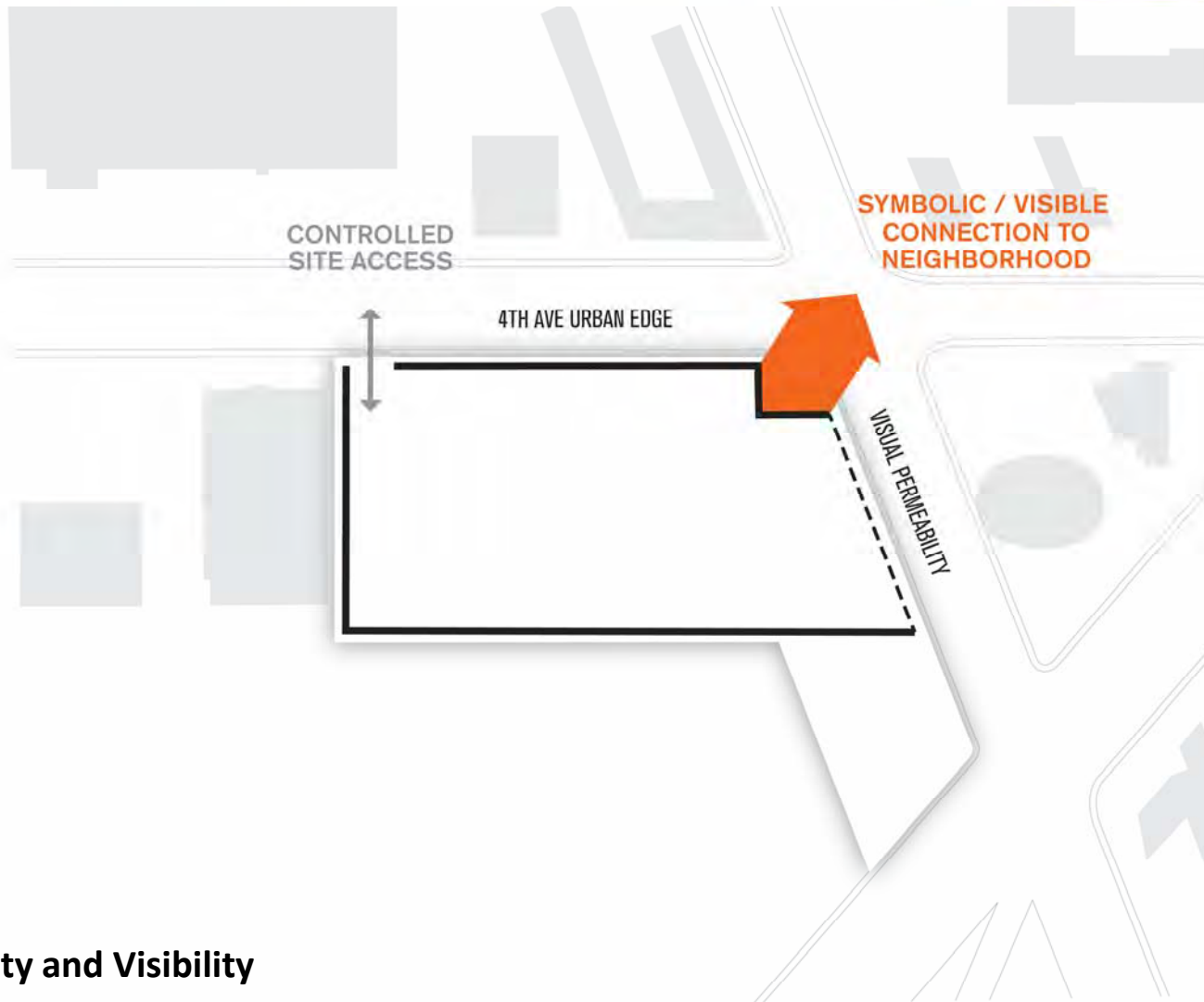
# GEORGETOWN

Wet Weather Treatment Station

 King County  
Protecting Our Waters  
*Doing our part on rainy days*



Site Location

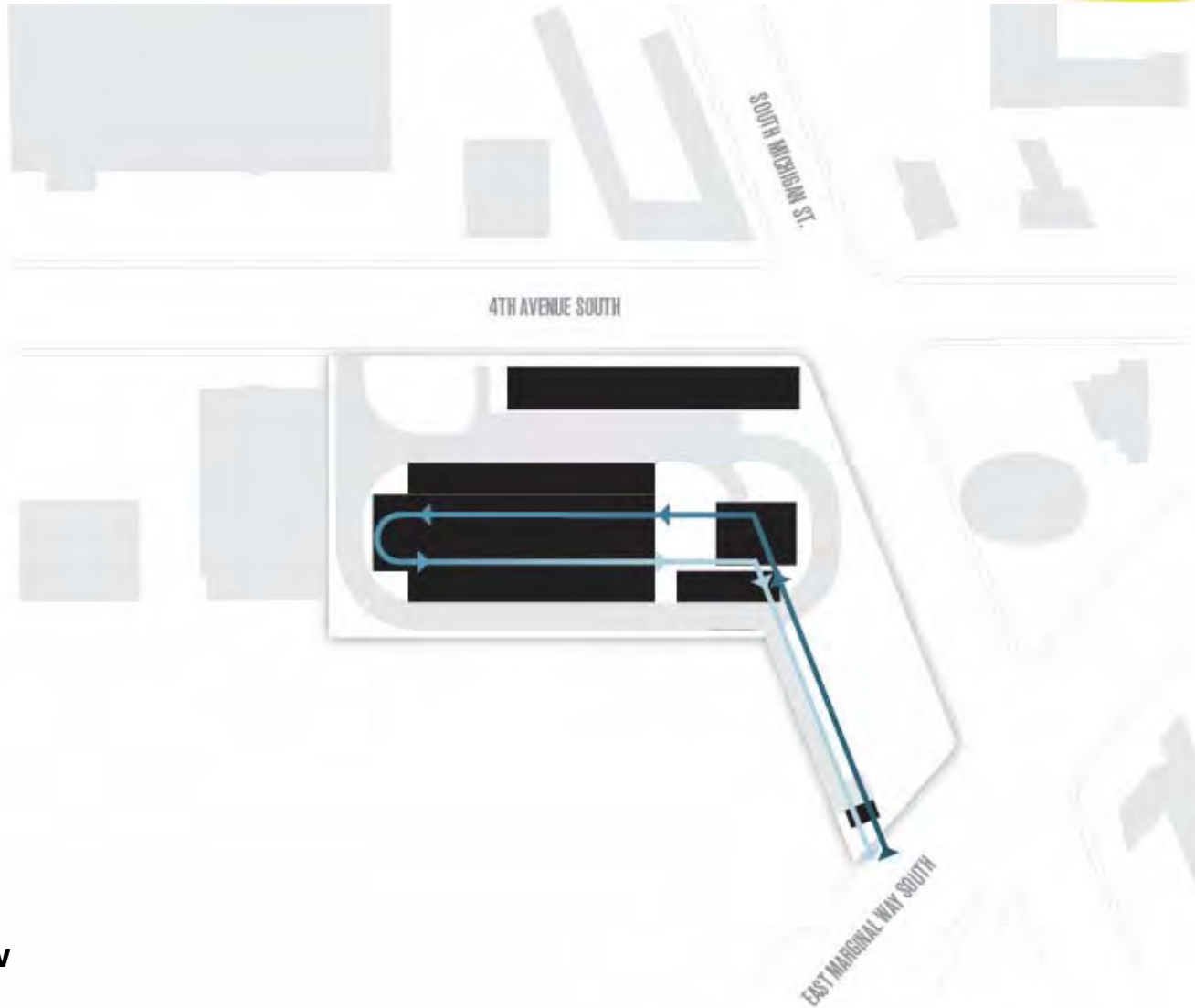


**Permeability and Visibility**

# GEORGETOWN

Wet Weather Treatment Station

 King County  
**Protecting Our Waters**  
*Doing our part on rainy days*

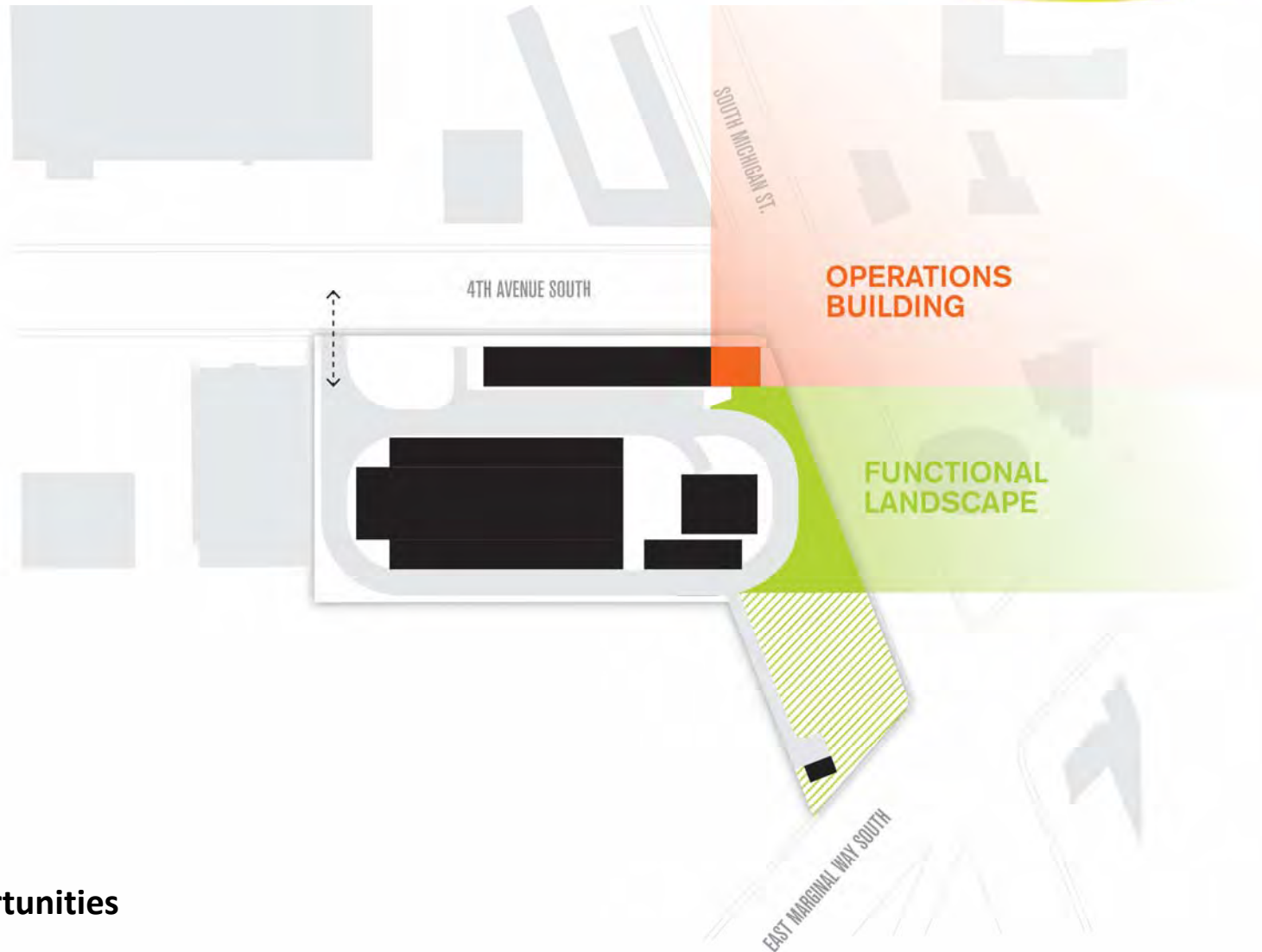


**Water Flow**

# GEORGETOWN

Wet Weather Treatment Station

 King County  
**Protecting Our Waters**  
*Doing our part on rainy days*

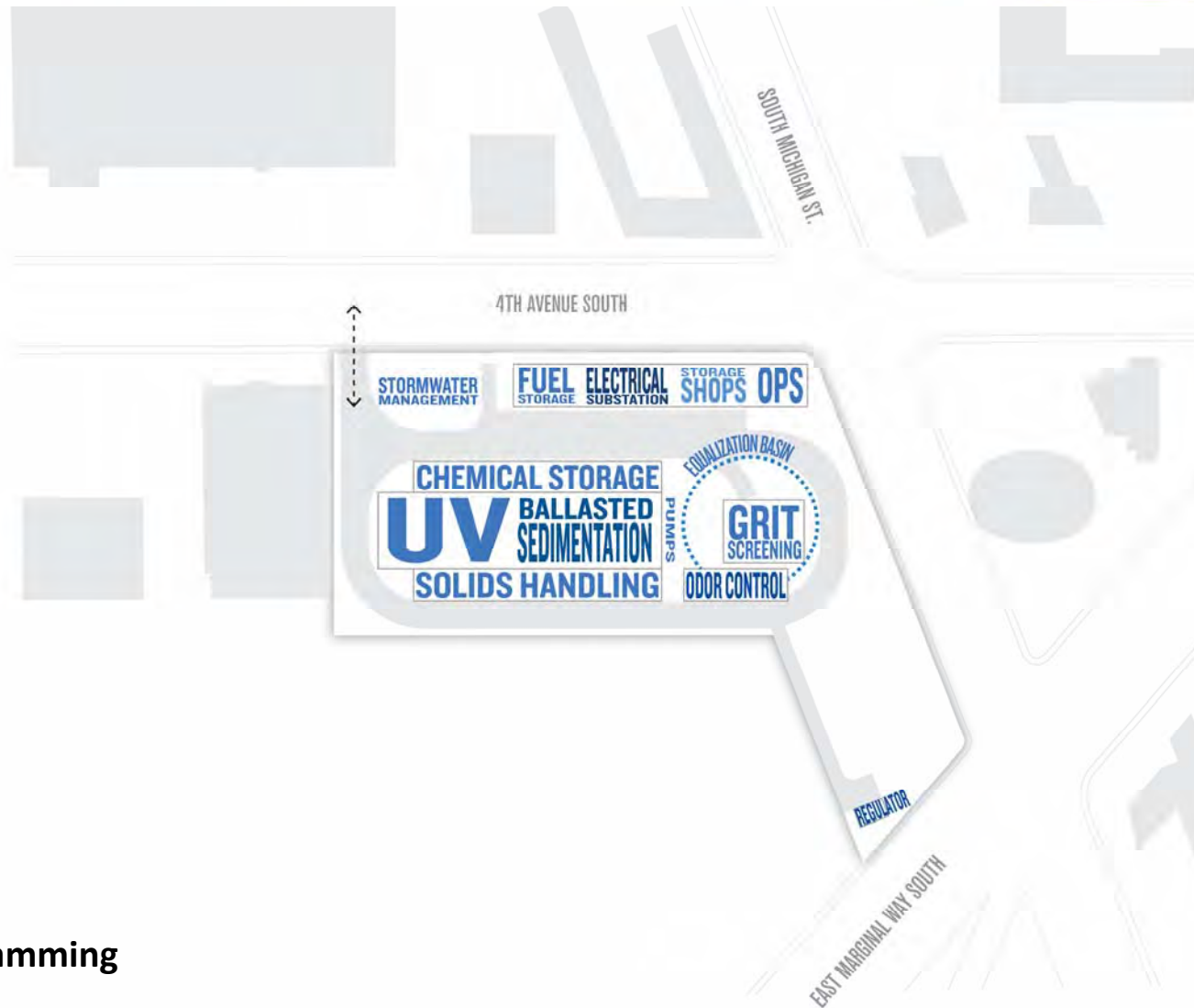


## Site Opportunities

# GEORGETOWN

Wet Weather Treatment Station

 King County  
Protecting Our Waters  
*Doing our part on rainy days*



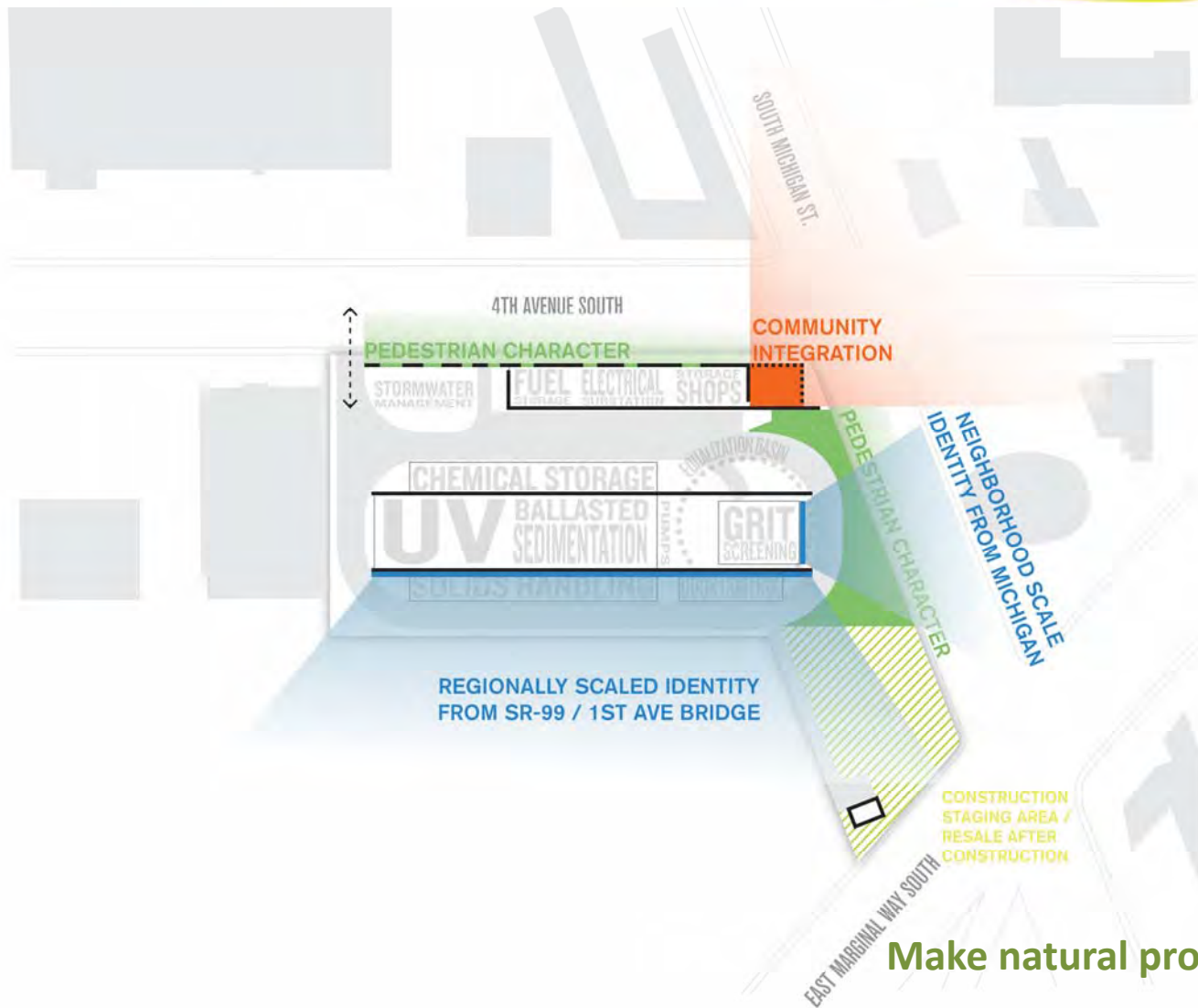
## Site Programming



# GEORGETOWN

Wet Weather Treatment Station

King County  
Protecting Our Waters  
Doing our part on rainy days



Make natural processes visible

**GEORGETOWN**  
*Wet Weather Treatment Station*

 **King County**  
**Protecting Our Waters**  
*Doing our part on rainy days*



**Express elegance at all scales**

**GEORGETOWN**  
*Wet Weather Treatment Station*

 **King County**  
**Protecting Our Waters**  
*Doing our part on rainy days*



**Express elegance at all scales**

**GEORGETOWN**  
*Wet Weather Treatment Station*

 **King County**  
**Protecting Our Waters**  
*Doing our part on rainy days*

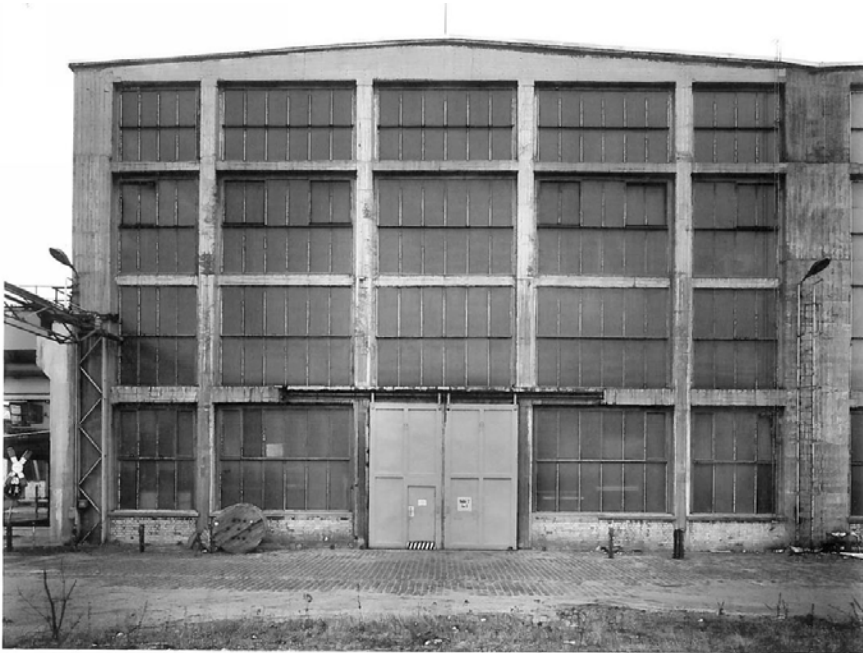


**Acknowledge the place, history, and transformations over time**

# GEORGETOWN

Wet Weather Treatment Station

 King County  
Protecting Our Waters  
*Doing our part on rainy days*



93 Eisenhüttenstadt, Brandenburg, D 1994



194 Rombas, Lorraine, F 1992

**Character – Craft, Grit, and Elegance**

**GEORGETOWN**  
*Wet Weather Treatment Station*

 **King County**  
**Protecting Our Waters**  
*Doing our part on rainy days*



**Make the treatment process visible**

**GEORGETOWN**  
*Wet Weather Treatment Station*

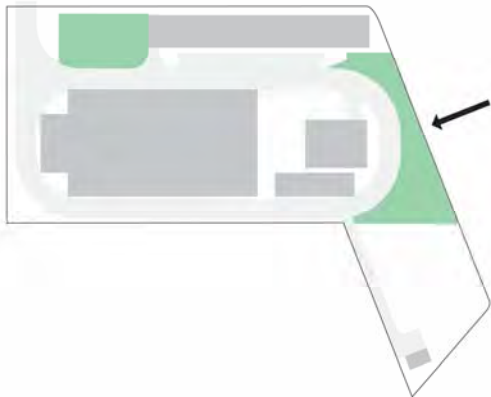
 **King County**  
**Protecting Our Waters**  
*Doing our part on rainy days*



**Make the treatment process visible**

**GEORGETOWN**  
*Wet Weather Treatment Station*

 **King County**  
**Protecting Our Waters**  
*Doing our part on rainy days*



## 4<sup>th</sup> and Michigan

Balance the public and private spaces



**GEORGETOWN**  
*Wet Weather Treatment Station*

 **King County**  
**Protecting Our Waters**  
*Doing our part on rainy days*



**Humanize the design / accessible and inviting human interaction**

**GEORGETOWN**  
*Wet Weather Treatment Station*



**King County**

**Protecting Our Waters**

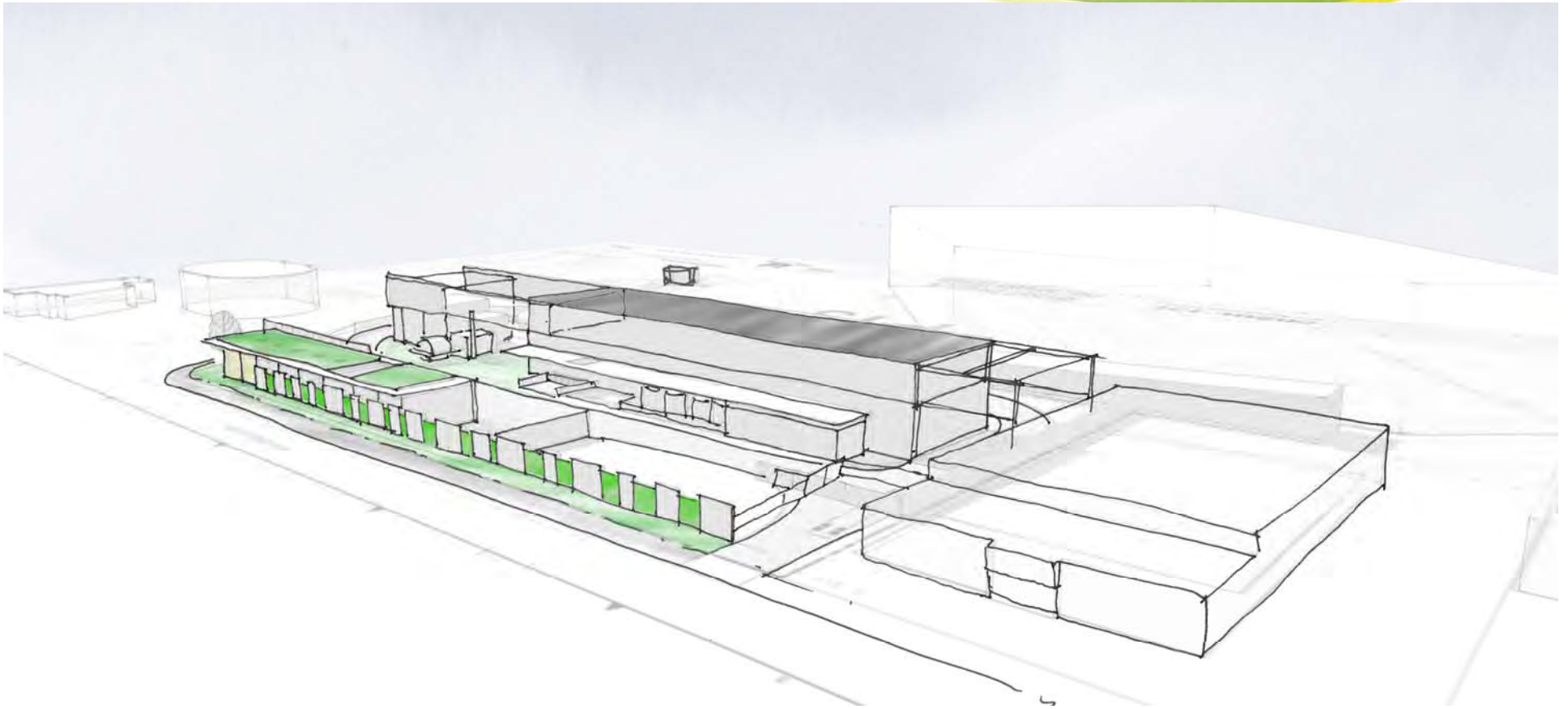
*Doing our part on rainy days*



**Humanize the design / accessible and inviting human interaction**

**GEORGETOWN**  
*Wet Weather Treatment Station*

 **King County**  
**Protecting Our Waters**  
*Doing our part on rainy days*



**NE Corner**

**Environmentally and socially sustainable**

**GEORGETOWN**  
*Wet Weather Treatment Station*

 **King County**  
**Protecting Our Waters**  
*Doing our part on rainy days*



## SW Corner

Enhance the understanding of public wastewater infrastructure

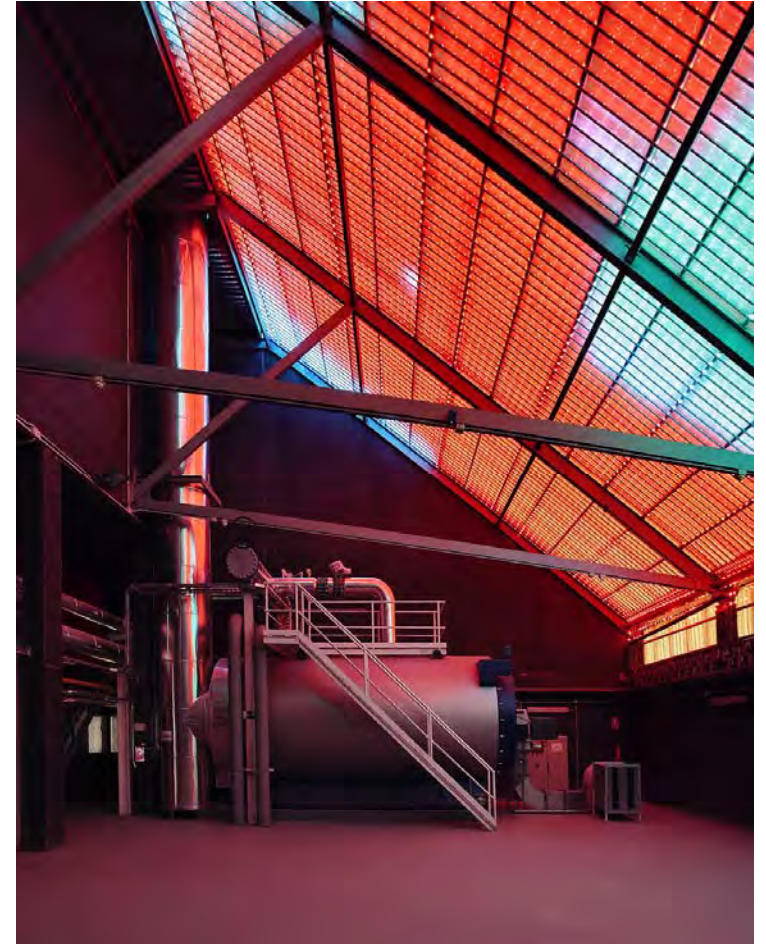
GEORGETOWN  
*Wet Weather Treatment Station*



King County

Protecting Our Waters

*Doing our part on rainy days*



**Acknowledge the place, history, and color palette**

**GEORGETOWN**  
*Wet Weather Treatment Station*

 **King County**  
**Protecting Our Waters**  
*Doing our part on rainy days*



**4<sup>th</sup> and Michigan**  
Individual Character



**NE Corner**

**Acknowledge the color palette**

**GEORGETOWN**  
*Wet Weather Treatment Station*

 **King County**  
**Protecting Our Waters**  
*Doing our part on rainy days*



## SW Corner

**Whimsical to hard working, industrial to residential, hand made to natural systems**



**GEORGETOWN**  
*Wet Weather Treatment Station*

 **King County**  
**Protecting Our Waters**  
*Doing our part on rainy days*



## 4<sup>th</sup> and Michigan

Whimsical to hard working, industrial to residential, hand made to natural systems

**GEORGETOWN**  
*Wet Weather Treatment Station*



**King County**

**Protecting Our Waters**

*Doing our part on rainy days*



**Make treatment processes visible**

**GEORGETOWN**  
*Wet Weather Treatment Station*

 **King County**  
**Protecting Our Waters**  
*Doing our part on rainy days*



**Make the treatment process visible**

# GEORGETOWN

Wet Weather Treatment Station

 King County  
**Protecting Our Waters**  
*Doing our part on rainy days*

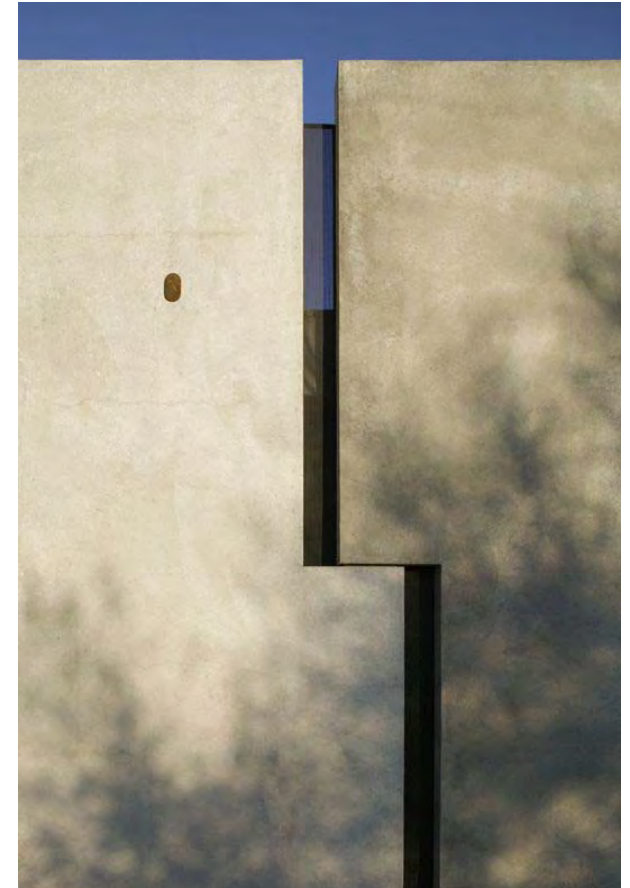


© Pegenauto

**Environmentally sustainable**

**GEORGETOWN**  
*Wet Weather Treatment Station*

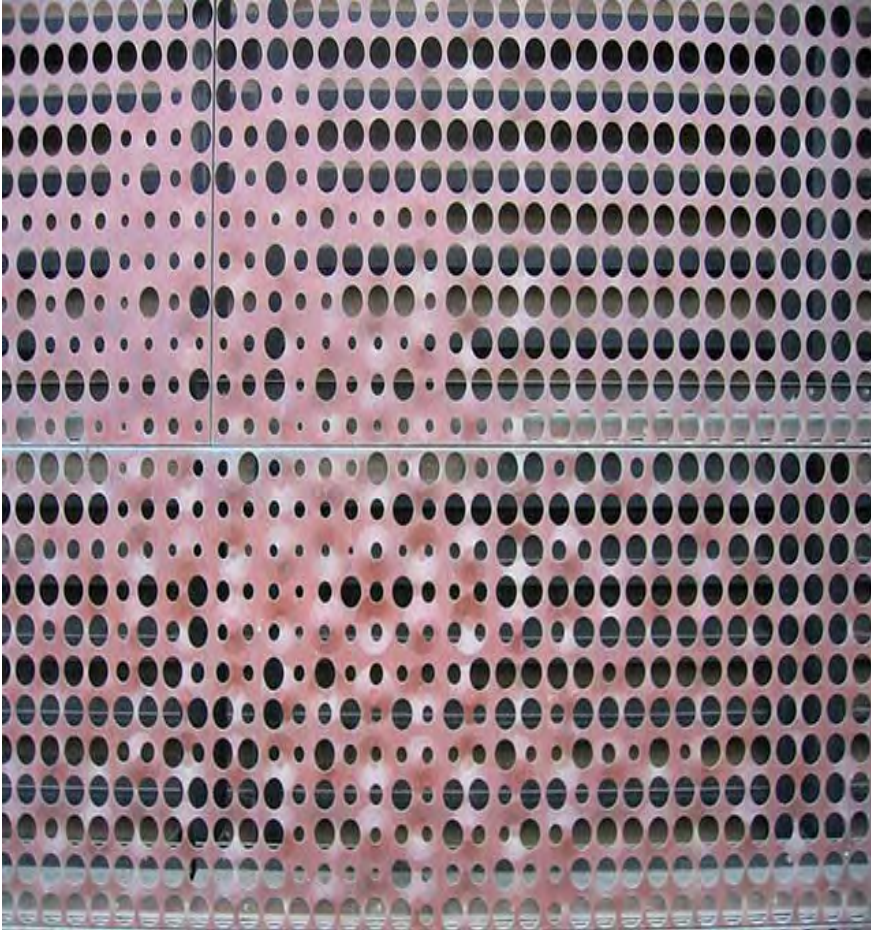
 **King County**  
**Protecting Our Waters**  
*Doing our part on rainy days*



**Humanize the design through scale**

**GEORGETOWN**  
*Wet Weather Treatment Station*

 **King County**  
**Protecting Our Waters**  
*Doing our part on rainy days*



**Express elegance at all scales**

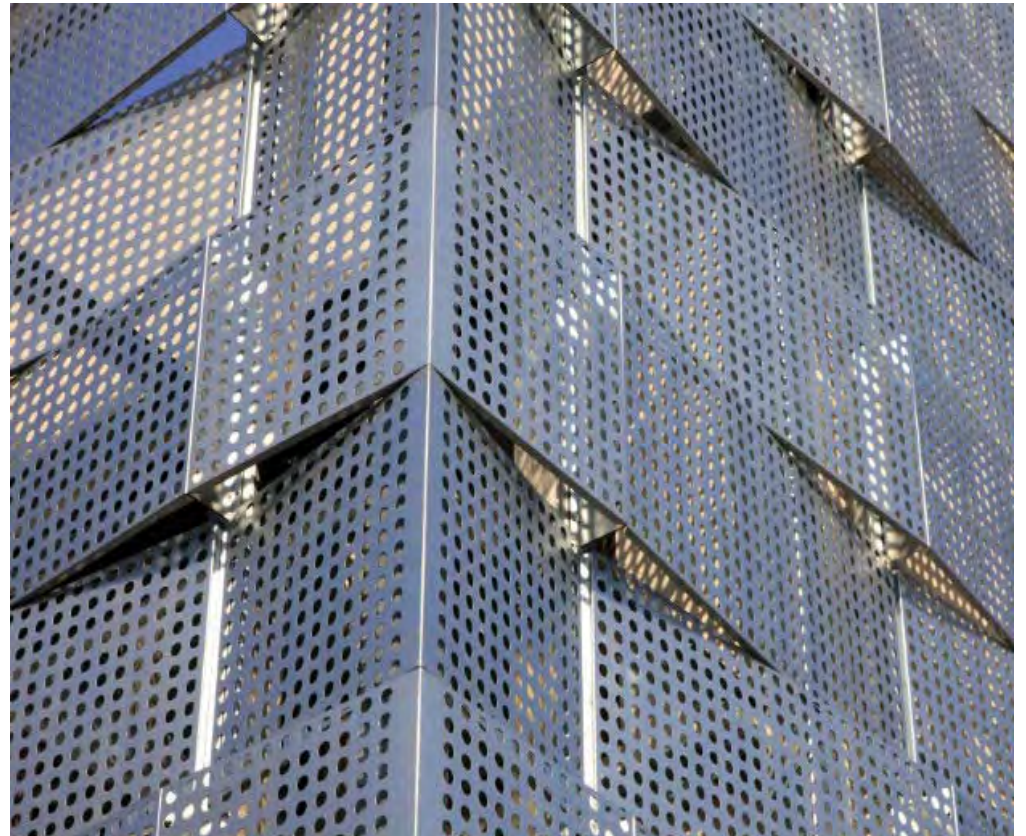
**GEORGETOWN**  
*Wet Weather Treatment Station*



**King County**

**Protecting Our Waters**

*Doing our part on rainy days*



**Environmentally sustainable**

# GEORGETOWN

Wet Weather Treatment Station

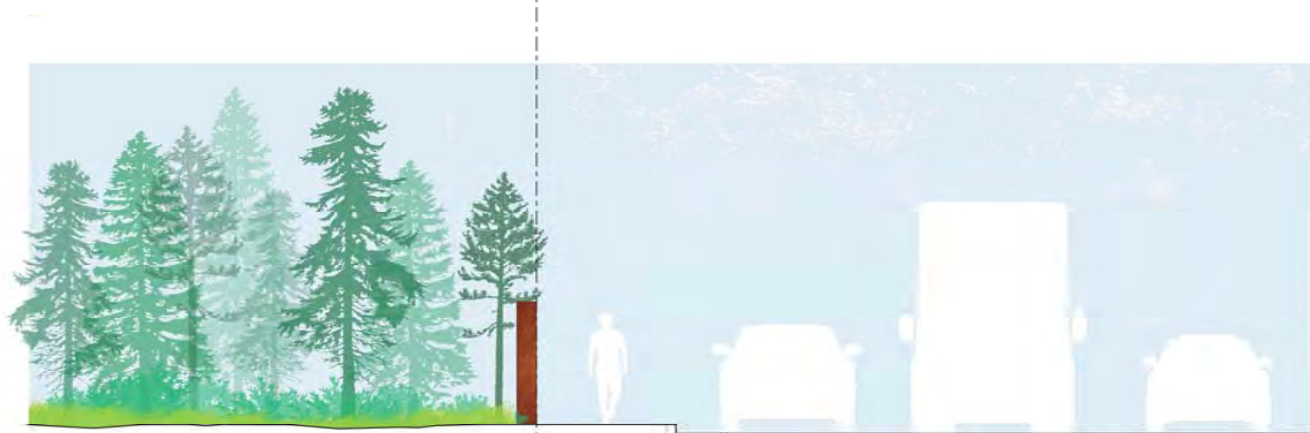
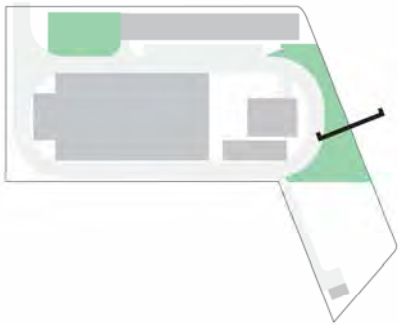
King County  
Protecting Our Waters  
Doing our part on rainy days



Option 1

Enhance air and water quality, make natural processes visible





FENCE/WALL AT  
PROPERTY LINE

**Enhance air and water quality, make natural processes visible**

**GEORGETOWN**  
*Wet Weather Treatment Station*

 **King County**  
**Protecting Our Waters**  
*Doing our part on rainy days*

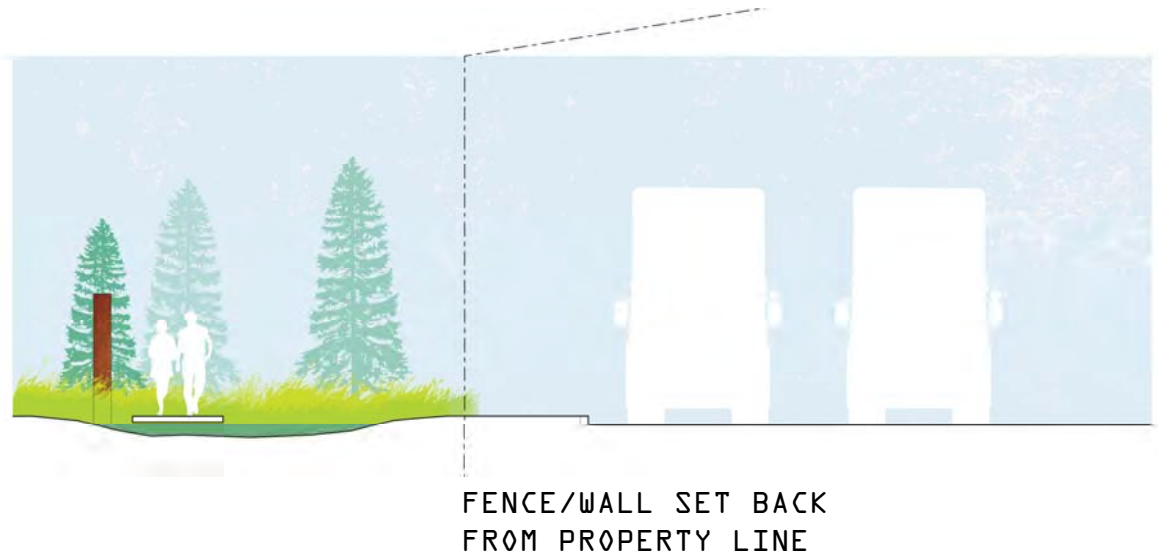
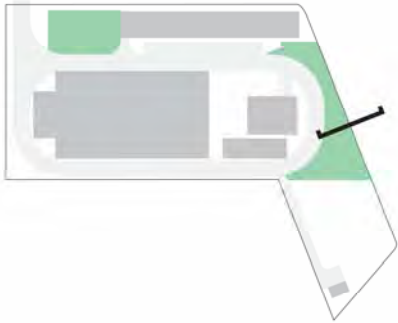


**Enhance air and water quality, make natural processes visible**



**Option 2**

**Enhance air and water quality, make natural processes visible**



**Enhance air and water quality, make natural processes visible**

**GEORGETOWN**  
*Wet Weather Treatment Station*

 **King County**  
**Protecting Our Waters**  
*Doing our part on rainy days*

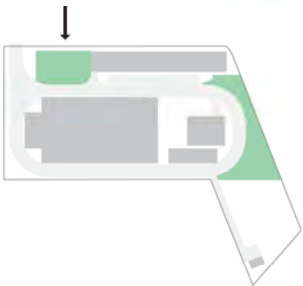


**Enhance air and water quality, make natural processes visible**

# GEORGETOWN

*Wet Weather Treatment Station*

 King County  
**Protecting Our Waters**  
*Doing our part on rainy days*



**Reflect the individual character of the neighborhood**

**GEORGETOWN**  
*Wet Weather Treatment Station*



**King County**

**Protecting Our Waters**

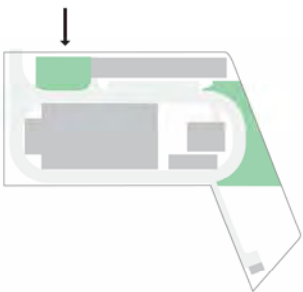
*Doing our part on rainy days*



**Reflect the individual character of the neighborhood**

**GEORGETOWN**  
*Wet Weather Treatment Station*

 **King County**  
**Protecting Our Waters**  
*Doing our part on rainy days*

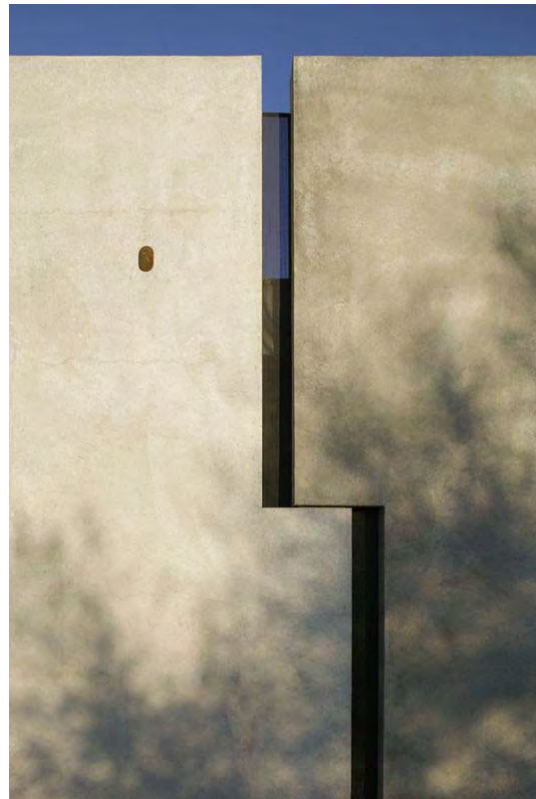


**Reflect the individual character of the neighborhood**



**GEORGETOWN**  
*Wet Weather Treatment Station*

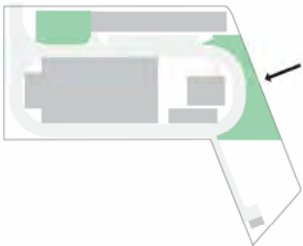
 **King County**  
**Protecting Our Waters**  
*Doing our part on rainy days*



**Reflect the individual character of the neighborhood**

**GEORGETOWN**  
*Wet Weather Treatment Station*

 **King County**  
**Protecting Our Waters**  
*Doing our part on rainy days*



**Reflect the individual character of the neighborhood**

**GEORGETOWN**  
*Wet Weather Treatment Station*

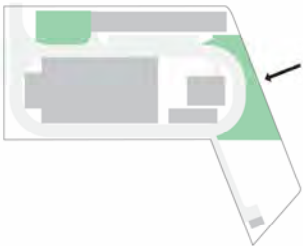
 **King County**  
**Protecting Our Waters**  
*Doing our part on rainy days*



**Reflect the individual character of the neighborhood**

**GEORGETOWN**  
*Wet Weather Treatment Station*

 **King County**  
**Protecting Our Waters**  
*Doing our part on rainy days*



**Reflect the individual character of the neighborhood**

**GEORGETOWN**  
*Wet Weather Treatment Station*

 **King County**  
**Protecting Our Waters**  
*Doing our part on rainy days*



**Reflect the individual character of the neighborhood**

## Design Concept Preferences

Please use **dots** to select your level of interest for each question.

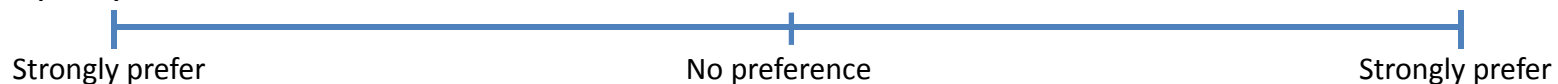
Please use **sticky notes** to indicate why you selected this level of interest.

### Example

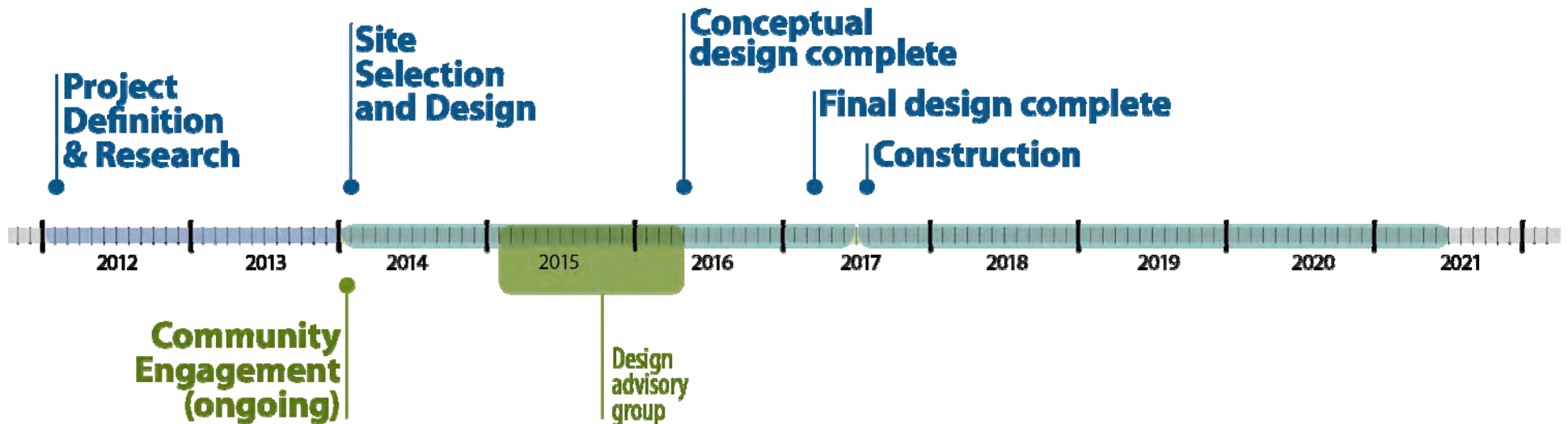
#### Preference for location of fence/wall on Michigan Avenue

Set back from  
property line

Along property  
line



# Project Schedule



## Community Events

- Georgetown Merchants Association – June 9
- Georgetown Community Council Meeting – June 15
- **Online Open House** – June 22 – July 15
- **Manufacturing and Industrial Council** – June 23
- **In-Person Open House** – June 23
- **Greater Duwamish District Council Meeting** – June 24
- **Georgetown Art Attack** – July 11
- **Georgetown Garden Walk** – July 12
- **Design Advisory Group Meeting #5** – July 30



**GEORGETOWN**  
*Wet Weather Treatment Station*



**King County**

**Protecting Our Waters**

*Doing our part on rainy days*

# Public comment

**Thank you!**

**For questions or comments, please  
contact:**

**Kristine Cramer**

**206-477-5415**

**[kristine.cramer@kingcounty.gov](mailto:kristine.cramer@kingcounty.gov)**

**[www.kingcounty.gov/georgetownWWTS](http://www.kingcounty.gov/georgetownWWTS)**