

Stuck River Trunk



King County

Department of Natural Resources and Parks
Wastewater Treatment Division

Kent-Auburn Conveyance System Improvements Project

Fall 2012

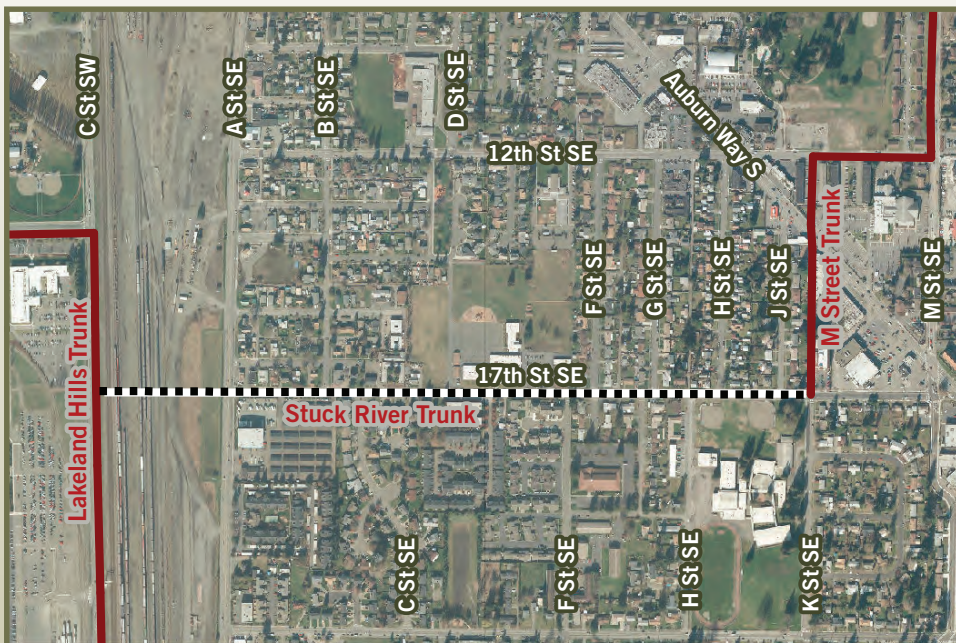
King County to install new sewer pipe along 17th Street Southeast in Auburn in 2013

King County protects public health and the environment by conveying and treating the region's wastewater. Wastewater is collected by local cities and sewer districts, including the cities of Auburn and Kent, and transported through King County pipes to the County's South Treatment Plant in Renton.

In order to accommodate growth in the area, King County is installing

4,000 feet of new sewer pipe along 17th Street Southeast in Auburn between K Street Southeast and C Street Southwest (see map).

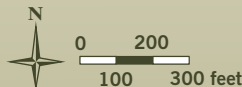
This new pipeline, the Stuck River Trunk, will provide sufficient capacity to meet Auburn's needs through 2050 and reduce the chance of sewer backups into homes and streets.



The new sewer pipe will add capacity to the King County sewer system and reduce the potential for sewer overflows into homes and streets.

----- New County Sewer

———— Existing County Sewer



Fall 2012

What to expect during construction

- Noise and dust typical of a construction site
- Crews, trucks, and heavy equipment
- Increased truck traffic and road restrictions
- Traffic control and flaggers
- Access limitations
- Pedestrian restrictions and sidewalk closures
- Typical work hours 7 a.m. to 6 p.m. weekdays



For more information

Project Website:

Visit www.kingcounty.gov and search "Kent Auburn"

Contact:

Adair Muth
adair.muth@kingcounty.gov
206-263-7319



Construction on King County sewer project in Auburn begins next year!

Being a good neighbor

King County is committed to being a good neighbor and will work directly with the community throughout the project to minimize construction impacts whenever possible. Residents and businesses can expect:

- Community meetings prior to the start of construction
- Advance notice of construction activities
- Project website and construction updates
- 24-hour construction hotline
- One-on-one problem solving with residents directly impacted by construction activities

Alternative Formats

Available Upon Request

206-684-1280 or 711 TTY Relay

Printed on recycled paper.

1210_2880_CSImailer_AUBURN.indd LPRE



PRESORTED
STANDARD
U.S. Postage
PAID
Seattle, WA
Permit No. 836