

### What is King County building?

Summer 2012

To protect public health and the environment, King County is building a new 20-inch diameter sewer adjacent to the Kent Phoenix Academy and along Southeast 264th Street between the Academy and 114th Avenue Southeast in Kent.

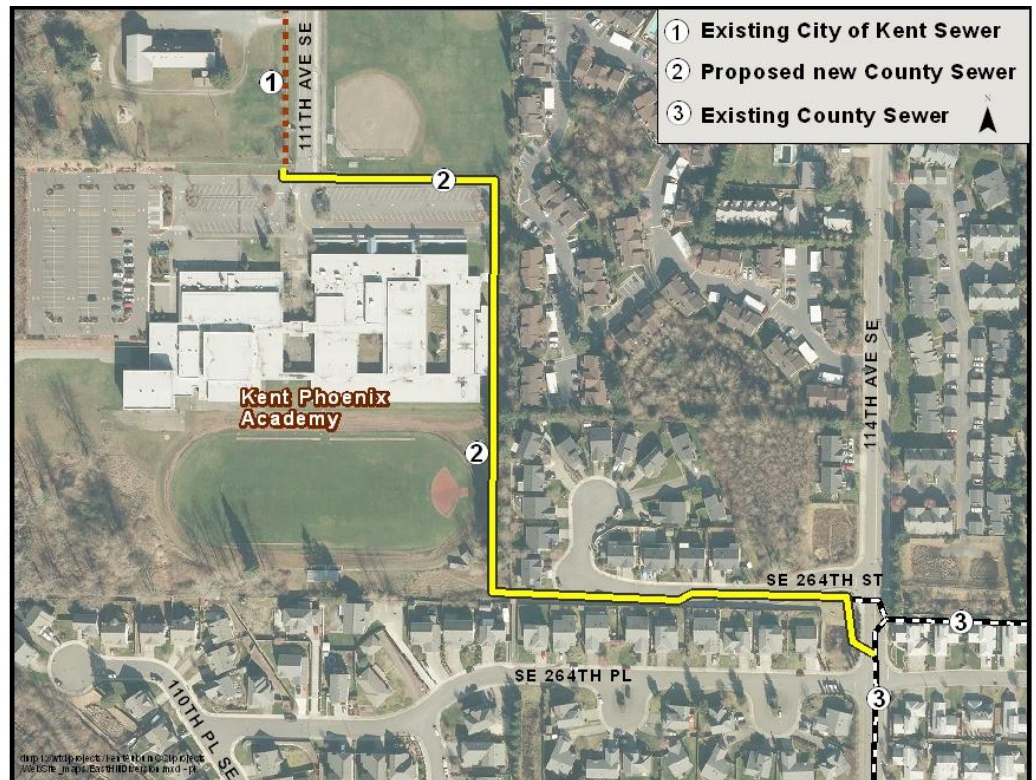
### Why do we need this project?

The Kent East Hill Diversion pipeline will increase the capacity of the King County sewer system to accommodate growth in Kent and neighboring communities.

Wastewater from south King County is collected by local cities and sewer districts, including the cities of Kent, Auburn, Algona and Pacific. King County collects sewage from these local jurisdictions and conveys it to the County's South Treatment Plant in Renton.

Providing additional sewer capacity will protect public health by reducing the chance of sewer overflows into homes and streets. The new pipeline will provide sufficient capacity to meet Kent's needs through 2050.

Approximately 1,500 feet of the new pipeline will be installed by open trench construction. Approximately 300 feet of the new pipeline will be installed below ground using trenchless construction methods. Construction is anticipated to begin in summer 2013. More information about schedule and expected impacts will be available later.



*Location of the new Kent East Hill Diversion pipeline in Kent*

#### FOR MORE INFORMATION:

##### Project webpage:

<http://www.kingcounty.gov/environment/wtd/Construction/South/KentAuburn.aspx>

##### Contact:

Adair Muth at [adair.muth@kingcounty.gov](mailto:adair.muth@kingcounty.gov) or 206-263-7319

**ALTERNATE FORMATS AVAILABLE**

206-684-1235/TTY Relay: 711