



King County

Department of Natural Resources and Parks
Wastewater Treatment Division

NORTH MERCER ISLAND/ENATAI Sewer Upgrade Project

November 2022

Pipe installation progresses to 78th Avenue Southeast

Background:

Crews expect to wrap up pipe installation via “open cut” trenching through the intersection of Southeast 22nd Place and 78th Avenue Southeast as early as this week. Immediately following, crews will adjust and install traffic control measures and begin installation on 78th Avenue Southeast. During open-cut construction, crews will complete the following activities:

- **Excavation:** Crews will saw cut, remove asphalt, and dig from the roadway surface to the pipe depth.
- **Installation:** Crews will lower pipe segments into the trench and fuse them together.
- **Temporary Restoration:** Crews will backfill the excavation and temporarily restore the roadway surface where the pipe has been installed.
- **Final Restoration:** Once all the pipe in this area has been installed, we will fully restore all disturbed areas based on permit conditions agreed upon with the City of Mercer Island.

What to expect during pipe installation:

- Permitted work hours are 7 a.m. to 7 p.m. Monday to Friday and 9 a.m. to 6 p.m. on Saturday.
- Some homes may be subject to temporary daytime driveway access interruptions.
 - Access to residences should be always maintained during construction. **If access is denied, please call or text the 24-hour hotline at 425-305-3578.** We will speak with the on-site staff and resolve the issue as quickly as possible.
 - Crews will lay metal plates over excavations to restore access as needed. It may take crews up to 15 minutes to set up a safe surface for you to cross.
- There will be noise, dust, and vibrations typical of an active construction project.
- Emergency vehicle access will be maintained during construction.
- Services such as garbage, recycling, composting, and mail will not be interrupted.



Excavations to install the pipe range in depth from 15 – 30 feet. Do not approach open excavations for your safety and the safety of our crews.

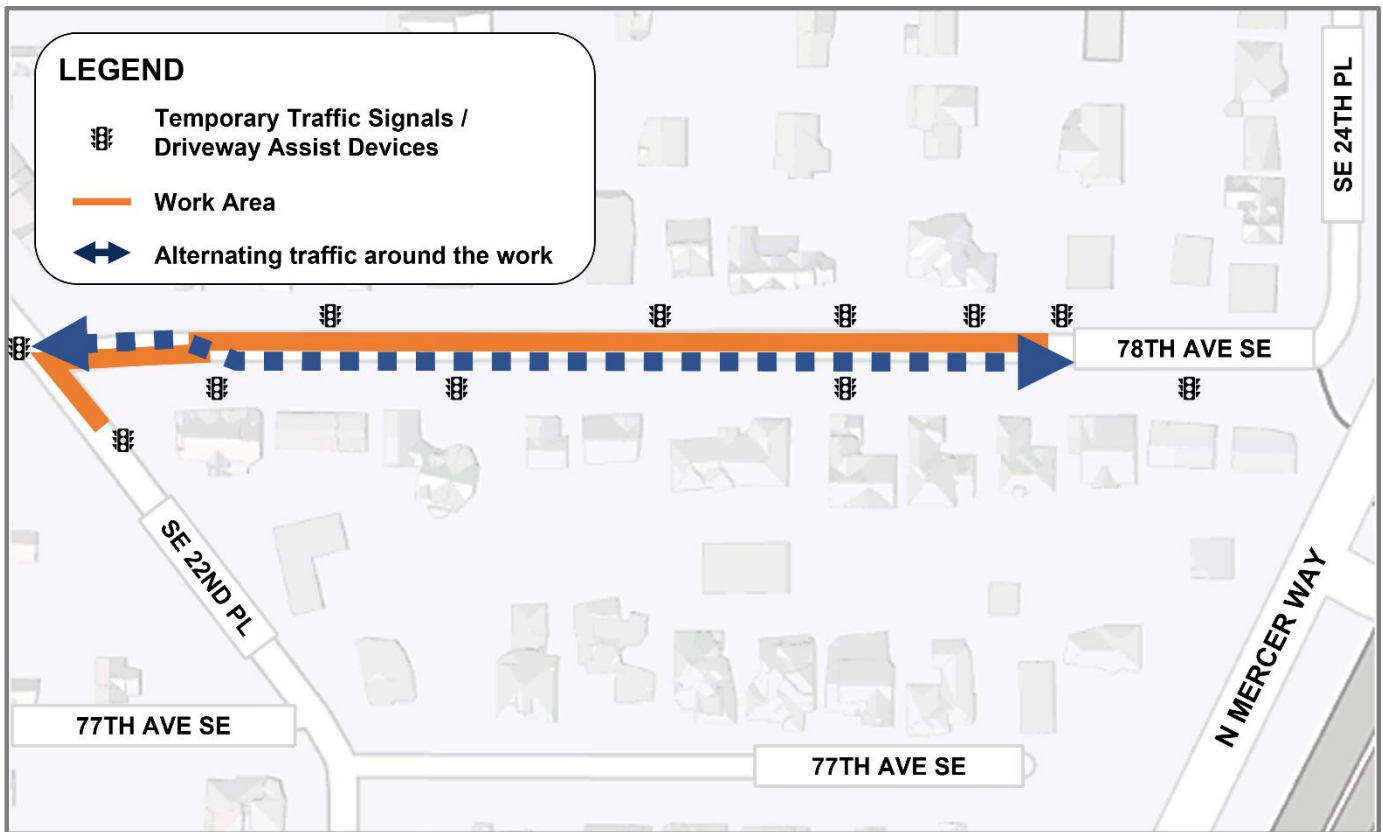
Please join us on Thursday, November 17, for a neighborhood walk on 78th Ave SE

Project staff and the contractor will meet on the corner of 78th Ave SE and SE 24th St and walk the work area with neighbors from 4 to 5 p.m. During the walk, the team will share more information about the location of the new sewer pipe and what neighbors can expect as construction starts.

We'll walk rain or shine, so please dress for the weather and wear sturdy shoes for walking.

*To request special accommodations or if you cannot attend, **please contact the community relations team by calling or texting 425-305-3578 or by emailing NMEsewer@kingcounty.gov.***

Traffic control on 78th Avenue Southeast:



Temporary signals will direct one lane of alternating traffic around the work area.

We have approval from the City of Mercer Island to use temporary signals, also known as “automatic flaggers,” to maintain one lane of alternating traffic around the work area. The temporary signals are set to hold traffic for up to 15 minutes. This time allows crews to move materials and equipment through the work area and ensure safe passage for people driving.

These signals are set up to communicate with one another and are being adjusted regularly to respond to the feedback we hear from our construction team and neighbors. We understand that waiting at these lights can be a temporary inconvenience for near neighbors. We appreciate your patience as we work to complete construction as safely and efficiently as possible.

NORTH MERCER ISLAND/ENATAI

Sewer Upgrade Project

Talk to us! For more information or to schedule a virtual meeting, please contact:

The community services team at **425-305-3578** or **NMEsewer@kingcounty.gov**

Sign up for text alerts. Text **KING MERCERSEWER** to **468-311**.

Visit the project Webpage at **www.kingcounty.gov/MercerEnataiSewer**



Alternative formats available
206-477-5371 or TTY replay: 711

@KingCountyWTD

