



King County

Department of Natural Resources and Parks
Wastewater Treatment Division

NORTH MERCER ISLAND/ENATAI Sewer Upgrade Project

April 2023

UPDATE: Construction on North Mercer Way starting as early as May 8th

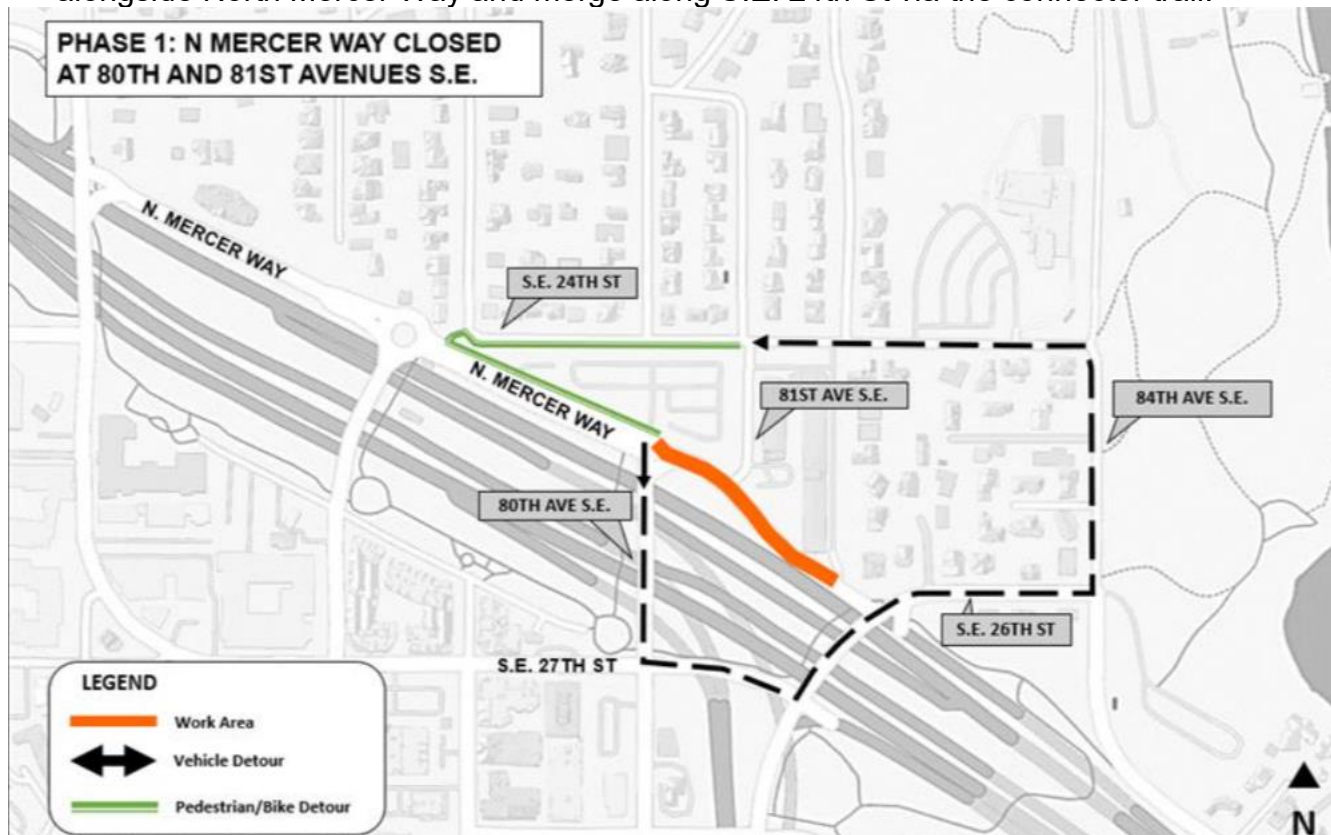
Construction will take place in four phases:

We anticipate work on North Mercer Way to be complete approximately two months after construction begins. For more information regarding all four phases of construction on North Mercer Way, [please read our previous notice](#).

Phase 1 begins as early as May 8th:

North Mercer Way closed at 80th and 81st Avenues S.E.

- There will be no right turns to eastbound North Mercer Way from 80th Ave S.E.
- Drivers will be detoured right onto 80th Ave S.E., S.E. 27th St, Island Crest Way, S.E. 26th St, 84th Ave S.E. and S.E. 24th St to avoid work zone.
- Pedestrians and bicyclists will be detoured away from the work zone onto the shared-use sidewalk alongside North Mercer Way and merge along S.E. 24th St via the connector trail.



North Mercer Way for phase 1 of construction.

What to expect:

- All work will be performed in the public right-of-way.
- Typical work hours are 7 a.m. to 7 p.m. Monday to Friday and 9 a.m. to 6 p.m. on Saturday for the duration of this work.

- Noise, dust, and vibrations typical of an active construction project.
- Emergency vehicle access will be maintained.
- Garbage, recycling, composting, and mail service should be maintained.
 - If services are interrupted, please call the 24-hour hotline at 425-305-3587.

NORTH MERCER ISLAND/ENATAI

Sewer Upgrade Project

Talk to us! For more information or to schedule a virtual meeting, please contact:

The community services team at **425-305-3578** or **NMEsewer@kingcounty.gov**

Visit the project Webpage at **www.kingcounty.gov/MercerEnataiSewer**



@KingCountyWTD



ALTERNATIVE FORMATS AVAILABLE
206-477-5371 / 711 (TTY Relay)

ALTERNATE FORMATS AVAILABLE
206-477-5371 OR TTY REPLY: 711