



NORTH MERCER ISLAND/ENATAI Sewer Upgrade Project

October 28, 2022

Construction on Southeast 35th Place beginning next week

Background:

King County is preparing to install a new sewer line that will run underneath streets, the I-90 Trail, and through the wooded area between 97th Ave SE and the cul-de-sac on SE 35th PL. In this cul-de-sac, the pipe changes from a gravity pipe to a siphon (a pipe that uses pressure to move wastewater flows). To support this transition, we will build above and below-ground structures supporting future operations.

Parking will be restricted in the cul-de-sac on SE 35th PL while crews work in this area. We will partially close SE 35th PL between E Mercer Way and Frontage Road. Residents will still be able to access their homes. We will also build temporary access roads for construction machinery. The roads will connect to our western work area on 97th Avenue SE and our eastern staging area at the Mercer Island Boat Launch.



Approximate locations of the above and below-ground structures that will support future operations.

Pedestrian and bike access to the Mercer Island Boat Launch will be closed during construction on SE 35th PL. The I-90 Trail will remain open to the south of SE 35th PL.

Planned construction activities and schedule:

Starting as early as Monday, October 31st, the contractor will begin work by surveying the work area, removing and storing existing signage, and installing erosion control and tree protection.

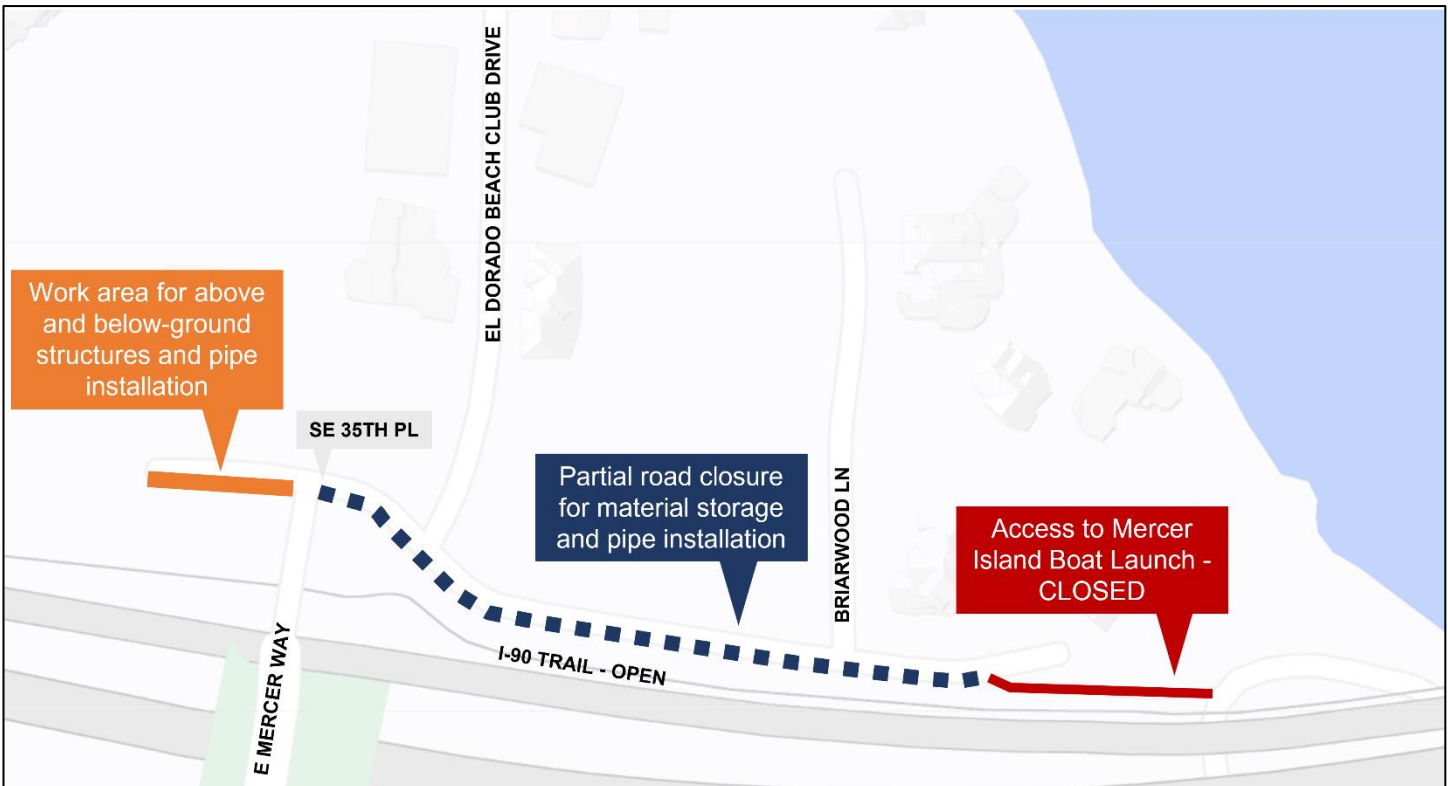
As early as Monday, November 7th, crews will partially close SE 35th PL between E Mercer Way and Frontage Road (see map on reverse) and install the access road from the Boat Launch to the cul-de-sac at 35th PL SE. The partial closure on SE 35th PL will be used to lay down and store materials for the above and below-ground structures in the cul-de-sac. Then as work progresses, this will be the location of the new sewer pipe.

Beginning in mid-November, crews will begin to excavate and install the above and below-ground structures in the cul-de-sac.

We have received requests for a neighborhood walk to help residents better understand construction and discuss potential impacts. We are working with the contractor to schedule a visit. We will follow up with neighbors once a date and time have been selected.

What to expect:

- All work will be performed in the public right-of-way.
 - We will not access private property during this work unless we have a signed agreement.
- Permitted work hours are 7 a.m. to 7 p.m. Monday to Friday and 9 a.m. to 6 p.m. on Saturday.
 - Work outside these hours will be done as approved by the City of Mercer Island.
- Some homes may be subject to temporary daytime driveway access interruptions.
 - Access to residences should always be maintained during construction. If access is denied, please call the 24-hour hotline at 425-305-3578. We will speak with the on-site construction inspector and contractor and resolve the issue as quickly as possible.
 - Crews will lay metal plates over excavations to restore access as needed. It may take crews up to 15 minutes to set up a safe surface for you to cross.
- There will be noise, dust, and vibrations typical of an active construction project.
 - Vibration monitors are onsite collecting data during construction to ensure that vibration levels do not exceed allowable limits set by the City of Mercer Island.
 - If vibration levels exceed the allowable limits, crews will temporarily stop work to address vibration levels as needed.
- Emergency vehicle access will be maintained during construction.
- Services such as garbage, recycling, composting, and mail will not be interrupted.



Work and staging areas on SE 35th PL.

Learn more:

- Read about work on SE 35th PL by visiting the project website (scan the QR code to access) www.kingcounty.gov/MercerEnataiSewer.
- Sign up for location-specific email lists by scanning the QR Code to the right.
- Changes to email and text preferences must be done using an internet browser. Changes submitted via text to KING MERCERSEWER at 468-311 will not be applied.
- Contact the community services team at 425-305-3578 or email NMEsewer@kingcounty.gov