



**King County**

Department of Natural Resources and Parks  
Wastewater Treatment Division

# NORTH MERCER ISLAND/ENATAI Sewer Upgrade Project

May 4, 2022

## Surveying continues/utility locates beginning in May

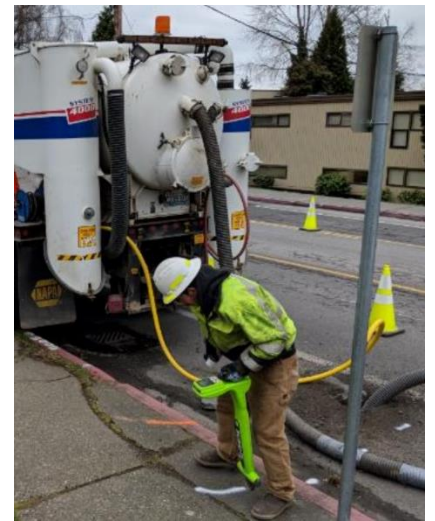
**Expect increased noise and vibration in neighborhoods, public parks, and along the I-90 trail.**

Starting as early as May 16, crews will locate utilities in north Mercer Island and Bellevue to prepare for major construction activities beginning later this Spring. Surveying and utility location will take place in neighborhoods, public parks, and along the I-90 trail. Most work will take place in the public right of way. King County will notify property owners ahead of any work on private property.

Utility location helps crews avoid service disruptions during construction work. To locate utilities, crews will use a jackhammer break-up pavement. Next, they use a vacuum excavation truck to remove dirt and locate buried utilities. Once the utilities have been located and documented, the roadway will be restored with asphalt.

### What to expect while crews are locating utilities:

- Permitted hours are 7 a.m. to 7 p.m. Monday to Friday and 9 a.m. to 6 p.m. on Saturday.
  - We will provide advance notice of any weekend or after-hours work.
- Utility location is expected to take approximately one month to complete.
  - Please note, construction schedules often change due to weather, staffing, and other unforeseen things.
- Flaggers will direct vehicle, pedestrian, and bicycle traffic around the work site, as necessary.
- Expect intermittent loud noise during jackhammering and saw cutting.
- Expect increased continuous noise while the vacuum truck is in use.



*Typical equipment used for utility location*

We will share additional information about impacts and schedule via the location-specific email lists, as needed. Learn how to sign up for targeted construction notifications on the reverse side of this PDF.

***For your safety, and the safety of our crews, please drive slowly and obey signs near active work areas.***

### For more information:

Contact the community services team at 206-477-5415 or email [NMEsewer@kingcounty.gov](mailto:NMEsewer@kingcounty.gov)

Visit the project web page at [www.kingcounty.gov/MercerEnataiSewer](http://www.kingcounty.gov/MercerEnataiSewer).

ALTERNATIVE FORMATS AVAILABLE

206-477-5371 / 711 (TTY Relay)



Utility location will take place along the future pipeline route in Mercer Island and Bellevue

### Sign up for location-specific email lists!

To stay up to date on the topics that matter to you, please sign up for targeted email or text lists based on location. We will continue to send regular project updates to the broad email lists we have used for years but will target construction notifications by location. Sign up for the lists you care about most by [clicking this link to our construction homepage](#) or by scanning the QR Code below.

### Topics for the North Mercer Island Enatai project include:

- North Mercer Pump Station
- North-central Mercer residential streets
- North Mercer Way/Mercer Park and Ride
- I-90 trail
- 90th PL SE
- Northeast Mercer residential streets
- Enatai Beach Park
- Mercer Slough



Changes to email and text preferences must be done using an internet browser. Changes submitted via text to KING MERCERSEWER at 468-311 will not be applied.

### For more information:

Contact the community services team at 206-477-5415 or email [NMEsewer@kingcounty.gov](mailto:NMEsewer@kingcounty.gov)

Visit the project web page at [www.kingcounty.gov/MercerEnataiSewer](http://www.kingcounty.gov/MercerEnataiSewer).

ALTERNATIVE FORMATS AVAILABLE

206-477-5371 / 711 (TTY Relay)