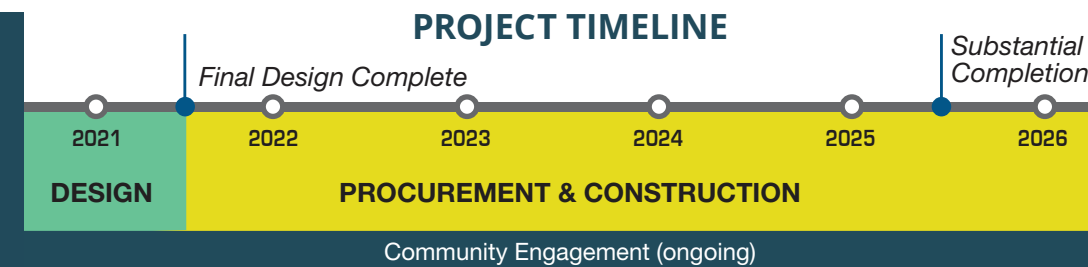




Please do not approach crews to ask questions about the work. Instead, call our construction hotline, and we'll put you in touch with the right person to address your questions or comments. 206-263-1915.

Scan or visit our website to sign up for alerts!



Construction safety is everyone's responsibility.



Expect to see crews in new locations this summer. Read more to learn how to keep yourself, your community, and construction crews safe.



To build new sewer infrastructure, crews work near many places where people live, work, and play. We need to work together to prevent accidents, injuries, and illnesses. Here are some general tips to stay safe:

- 1 Avoid going near active construction sites.** If you see temporary fencing, heavy machinery, or crews in vests, hardhats, and safety glasses, assume the area is an active construction zone. Only trained personnel with approved safety gear can enter construction zones.
- 2 Stay alert.** Construction will occur in many locations along our project corridor. Try to eliminate distractions when traveling around North Mercer Island and West Bellevue. There may be new crews in the areas you frequent as well as traffic detours or delays.
- 3 Look for construction and detour signage.** We have construction staging areas, active construction zones, temporary closures, and detours for everyone traveling through the project area. We will have signs and flaggers where necessary and required by permitting agencies.
- 4 Be considerate of our crews and observe current COVID-19 guidance.** For more information on King County's COVID-19 guidance and other resources, visit kingcounty.gov/covid.



If you're a pedestrian

- Move slowly through the area, look, and listen for hazards.
- Observe signs directing you to move through the area safely.
- Keep children, pets, and personal belongings away from construction sites.
- Call the construction hotline if you observe safety hazards or access barriers in the project area.



If you're a cyclist

- Share your path. Some cycling detours will be shared with pedestrians. Use bells, lights, and verbal signals to keep pedestrians safe.
- Cycle slowly through the area, look and listen for hazards.
- Observe signs directing you to cycle through the area safely.
- Call the construction hotline if you observe safety hazards or access barriers in the project area.



If you're a driver

- Share the road. Watch for cyclists and pedestrians.
- Do not drive into a construction site or staging area.
- Check behind you before backing out of your driveway. There may be new construction activities outside your home.
- Drive slowly through the area, look and listen for hazards.
- Call the construction hotline if you observe safety hazards or access barriers in the project area.



Join us in person on Mercer Island this summer!

King County Wastewater Treatment Division's community relations team will be in your community this summer. Staff will share project updates and answer questions.

Here's where you can find us:

- **Mercer Island Farmers Market** – select Sundays. Watch for announcements.
- **Mercer Island Community Center** – Community Office Hours Wednesdays starting July 27.

We hope to see you there!



Staff hosting booth at Bike Everywhere Day.



Find us online at kingcounty.gov/MercerEnataiSewer



NORTH MERCER ISLAND/ENATAI Sewer Upgrade Project

July 2022

CONSTRUCTION UNDERWAY

Scan or visit our website to sign up for alerts!

Major sewer construction activities continue this summer and fall in Mercer Island and Bellevue

We are working on four miles of sewer pipeline across North Mercer Island and southwest Bellevue. Learn more about progress and upcoming work.



FALL - WINTER 2021-22

King County awarded the construction contract to the Walsh Group and prepared for construction. The project team sent out a pre-construction newsletter and shared a pre-construction online open house with the community.



SPRING - SUMMER 2022

The contractor moved into approved staging sites in Mercer Island. We surveyed the project area, confirmed underground utilities, and removed trees as needed.

NORTH MERCER ISLAND/ENATAI Sewer Upgrade Project

Este boletín informativo brinda información acerca del proyecto de actualización del alcantarillado en el norte de Mercer/Enatai, el cual comenzará a construirse durante este año en Mercer Island y Bellevue. Para obtener más información, llame al 206-477-5415, deje un mensaje con su número de teléfono e indique su idioma. Se proporcionará un intérprete sin costo.

本通讯为您提供有关北 Mercer/Enatai 下水道升级项目的信息，该项目将于今年晚些时候在 Mercer 岛和 Bellevue 开始建造。如需更多信息，请致电 206-477-5415，使用您的电话号码留言并选定您所讲的语言。我们将免费提供口译员服务。

本通訊為您提供有關北 Mercer/Enatai 下水道升級項目的資訊，該項目將於今年晚些時候在 Mercer 島和 Bellevue 開始建造。如需更多資訊，請致電 206-477-5415，使用您的電話號碼留言並選定您所講的語言。我們將免費提供口譯員服務。



Talk to us!

For more information, or to schedule a virtual meeting, please contact the Community Relations Team.

☎ 206-263-1915 ✉ NMEsewer@kingcounty.gov

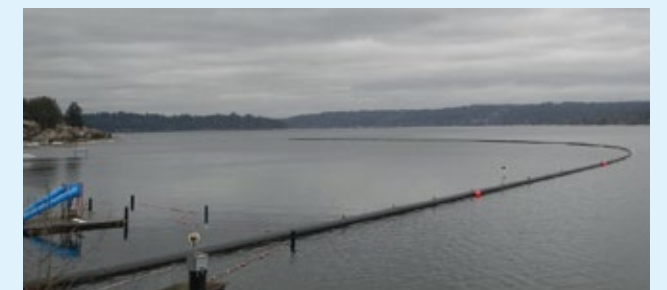
Visit the project Web page to learn more and sign up for email and text alerts.

🌐 kingcounty.gov/MercerEnataiSewer



SUMMER 2022

This summer, we will begin installing new pipes on Mercer Island. We will also relocate utilities in residential neighborhoods to make space for new sewer infrastructure. In Bellevue, we will begin drilling the path for the new pipe that will eventually be "pulled" under the Enatai hillside.



FALL 2022

In the fall, we will focus on in-water work during the first "fish window." A fish window is a period when spawning/migrating fish are less likely to be in the area. During the fish window, we plan to float the pipe that we will install under the Enatai hillside in the East Channel of Lake Washington. Then we will "pull" it under the hill.



Please note that construction schedules often change due to weather, staffing, and other unforeseen things. We will share additional information about impacts and the schedule via project email lists. Scan the QR code on the back of this newsletter to sign up.