



King County

Protecting Our Waters

Doing our part on rainy days

Rainier Valley Wet Weather Storage Project Online Survey Responses

*Responses collected in July 2014 and
between March and June 2015*



King County

Department of Natural Resources and Parks
Wastewater Treatment Division

Let us hear from you! Help King County be a better neighbor in the Rainier Valley!



About the survey

- In July 2014 and from March through June 2015, more than 200 people in the Rainier community completed a questionnaire about the design of the new storage facility to be built in the Rainier Valley.
- People responded to the survey online and at public meetings, events, grocery stores, and community centers.
- The survey was translated into four languages: English, Spanish, Vietnamese and Amharic.



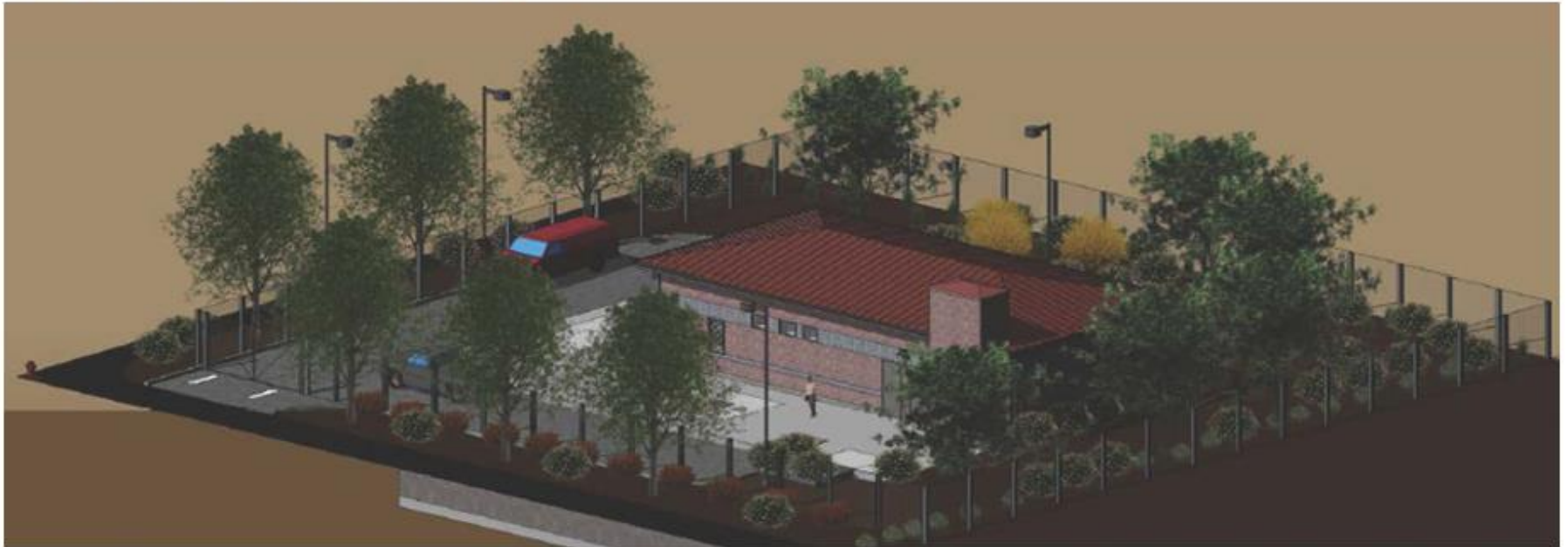
Summary of responses

- The majority of the people who answered the survey (80%) liked or loved the way the building looked in the design.
- 62% preferred the red brick over the gray.
- 76% would like to see public art included in the building and property design.
- The pump station will have a fence around it for safe operation. Most people (75%) were satisfied with how the fence looked in the design and with the proposed landscaping. Some indicated in the comments that they are concerned that dense landscaping would provide hiding places, creating a safety concern.
- Opinion was split on how the property surrounding the facility should be used. Answers varied between public open space (33%), a community center (18%), housing (22%), commercial (24%) and other (3%).



Building design

The building on top of the tank holds equipment to control odors and keep the tank working when the power goes out. This is the initial design for the building.



How do you feel about the way the building looks?

Answer Options	Do not like	Needs improvement	Like it	Love it	N/A	Rating Average	Response Count
Please add any specific comments about the building	5	27	156	16	6	2.90	210 34
						<i>answered question</i>	210
						<i>skipped question</i>	4



King County

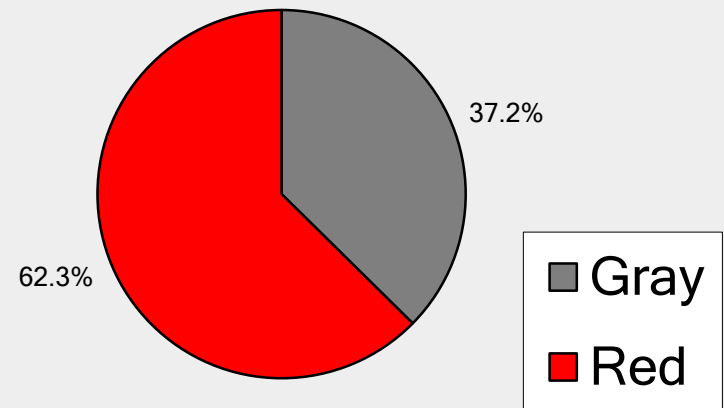
Protecting Our Waters

Doing our part on rainy days

Building color: Red or Gray?



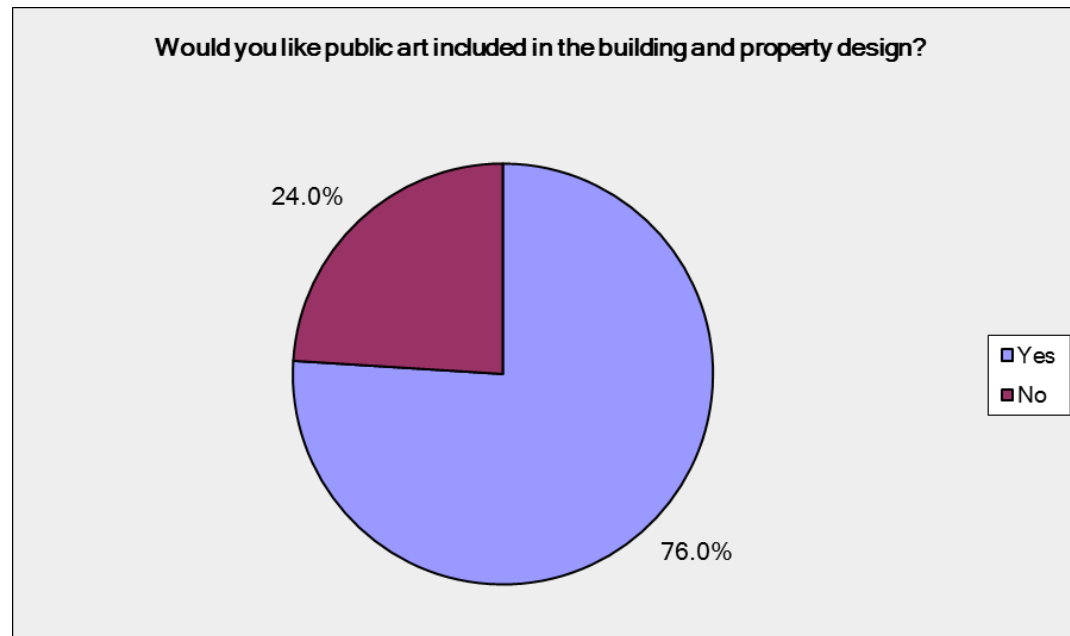
Which color do you prefer?



Answer Options	Response Percent	Response Count
Gray	37.2%	74
Red	62.3%	124
answered question		199
skipped question		15



Should we include public art?



Answer Options	Response Percent	Response Count
Yes	76.0%	155
No	24.0%	49
answered question		204
skipped question		10

Fence design



The tank and support building will be fenced so that it can be safely operated and maintained. How do you feel about the way the fence looks?

Answer Options	Do not like	Needs improvement	Like it	Love it	N/A	Rating Average	Response Count
	14	27	134	22	12	2.83	209
Please add any specific comments about the fence							56
answered question							209
skipped question							5

Landscaping design

New bushes, trees and ground cover will be planted around the tank and building on both sides of the fence.



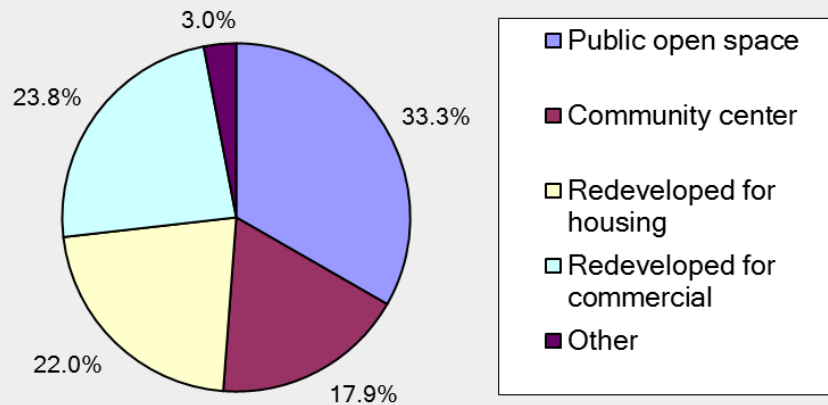
How do you feel about the look of plants and trees at the site?

Answer Options	Do not like	Needs improvement	Like it	Love it	N/A	Rating Average	Response Count
	3	46	108	47	4	2.98	208
Please add any specific comments you have about the plants and trees							53
<i>answered question</i>							208
<i>skipped question</i>							6



Preference for future use of property

King County will use the building east of the facility as a project office. After the project is complete, the County plans to make the property available for other use. Do you have suggestions on how to use the property after the project is finished?



Answer Options	Response Percent	Response Count
Public open space	33.3%	56
Community center	17.9%	30
Redeveloped for housing	22.0%	37
Redeveloped for commercial	23.8%	40
Other	3.0%	5
Other (please specify)		50
<i>answered question</i>		168
<i>skipped question</i>		46