



King County

Department of Natural Resources and Parks
Wastewater Treatment Division

Sunset and Heathfield Pump Stations and Force Main Upgrade

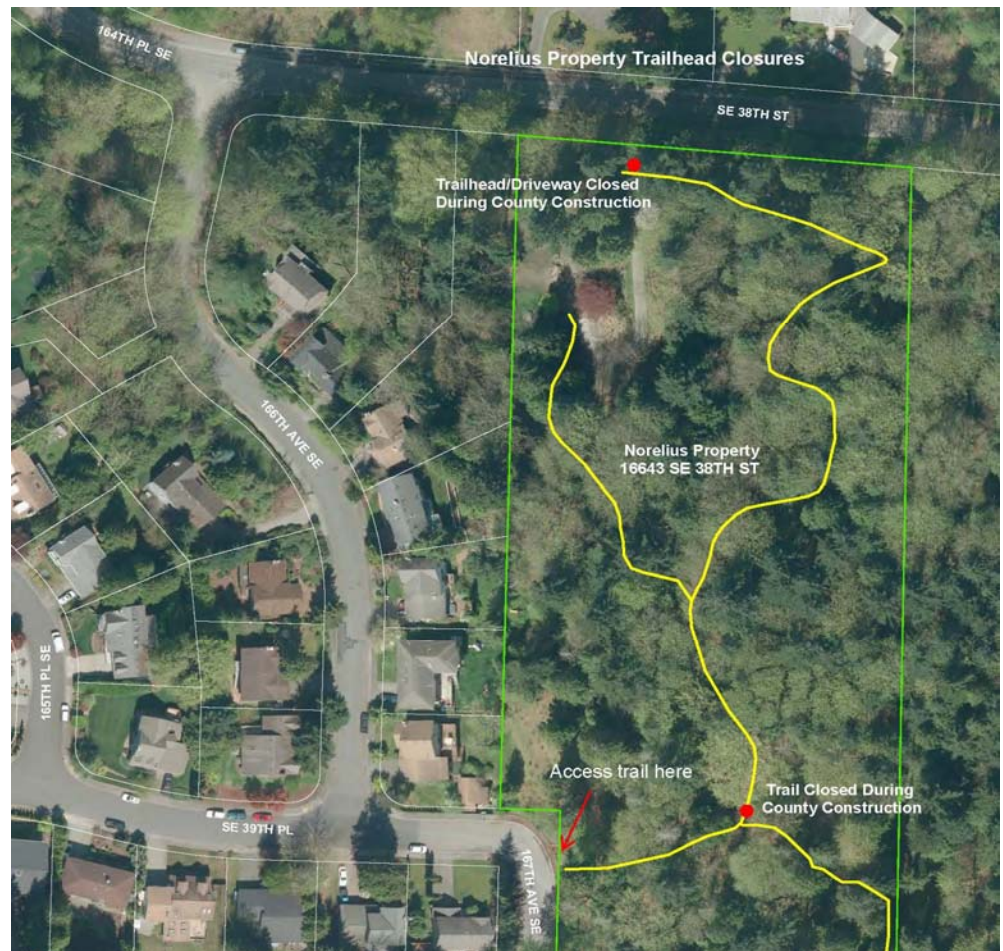
August 4, 2014

Mountains to Sound Greenway and I-90 Trail access closed Aug. 4-6

Access to the Mountains to Sound Greenway and I-90 Trail system is closed at this location (see map below) while King County conducts geotechnical investigations during the week of August 4. This work is part of the Sunset and Heathfield Pump Stations and Force Main Upgrade project and is being performed to gather important data about underground conditions to inform the project's design. The work is expected to last up to three days. Trail access will reopen after King County crews finish their work, projected to be by Wednesday, August 6.

Alternate Access:

While crews work at this site, please access the trail system at S.E. 39th Place and 167th Avenue S.E., shown on map to the right.



For more information:

Contact Kristine Cramer:

kristine.cramer@kingcounty.gov or 206-477-5415

Visit the project website:

www.kingcounty.gov and search "Sunset Heathfield"

ALTERNATIVE FORMATS AVAILABLE

206-477-5371 / 711 (TTY Relay)