



King County

Department of Natural Resources and Parks
Wastewater Treatment Division

ONLINE OPEN HOUSE: FEBRUARY 23 - MARCH 6, 2015

Sunset and Heathfield Pump Stations and Force Main Upgrade

Welcome

Project Overview

Sunset Pump Station

Heathfield Pump Station

Force Main

Envision: Equity and Sustainability

Provide Your Input

Thank you

Welcome

Next

Welcome to the Sunset and Heathfield Pump Stations and Force Main Upgrade project online open house. We're glad you joined the conversation.

How to use the online open house

Learn more about the project and see updates on the team's progress by clicking "next" or the tabs above. **You can take notes as you go at the bottom of every page.** Your notes will automatically transfer to the comment form on the Comment page. Please visit all pages, **take the survey on the 'Provide your input' page**, and submit the comment form to share your thoughts with the project team.

Committed to keeping you informed

Thanks to the community members who joined the King County project team on March 3 to discuss the project at Vasa Park Ballroom. We appreciated the opportunity to share information and identify opportunities to work together as the County continues to design improvements to the 50-year old wastewater system serving Bellevue, Sammamish, and Issaquah.

King County will continue to provide updates to the community as we reach important milestones. Sign up to receive updates at the bottom of the page or at the end of this open house.

For more information visit the project website at www.kingcounty/sunsetheathfield

ALTERNATIVE FORMATS AVAILABLE 206-477-5371 | 711 (TTY Relay)



Next station

Take notes as you go

You can use these notes later in the comments section

Take notes here.

Want to learn more?

Visit the project website: www.kingcounty/sunsetheathfield

Share this site with neighbors or friends





Sunset and Heathfield Pump Stations and Force Main Upgrade

[Welcome](#)[Project Overview](#)[Sunset Pump Station](#)[Heathfield Pump Station](#)[Force Main](#)[Envision: Equity and Sustainability](#)[Provide Your Input](#)[Thank you](#)[Next](#)

Project Overview

King County will upgrade the Sunset and Heathfield Pump Stations as well as the connected sewer force main pipe. The pump station and sewer pipes send sewage from Sammamish, Issaquah, and Bellevue to be cleaned at the County's treatment plant in Renton. The sewer system is being upgraded with additional capacity to serve the area's growing population.

At this point in the project, the team knows the general layout of the pump station equipment. The basic route and construction methods of the new force main pipe have also been decided.

Project Schedule

The project team has finished the preliminary design phase. The next phase of design will focus on fencing, lighting, and landscaping at the pump stations. The team will decide the final layout of the pump station equipment and the exact location of the new force main pipe. Please note construction is not expected to begin until 2017.

Terms to Know

- **Pump station:** A structure used to move wastewater uphill, against gravity.
- **Force main:** Pipe that carries flow from the Sunset and Heathfield Pump Stations to the Eastgate Trunk.
- **Eastgate Trunk:** Large pipe that carries wastewater from Sammamish, Issaquah, and Bellevue north to connect with additional pipes that carry the flow to the South Treatment Plant in Renton.
- **Sewage:** Used water that goes down drains and/or toilets in homes and businesses.

Link to

- [Project factsheet](#)
- [Project FAQ](#)

[Next station](#)

Take notes as you go

You can use these notes later in the comments section

Take notes here.

Project Area Map



Project Schedule

Sunset & Heathfield Pump Stations & Force Main Upgrade Project Timeline



Want to learn more?

Visit the project website: www.kingcounty/sunsetheathfield

Share this site with neighbors or friends



Sunset and Heathfield Pump Stations and Force Main Upgrade

Sunset Pump Station

Next

The Sunset Pump Station is located on West Lake Sammamish Parkway S.E. near Vasa Park.

Improvements to the Sunset Pump Station include:

- New lighting and fencing – [click here to share your thoughts!](#)
- 4 new pumps to increase capacity
- New electrical and controls systems
- New standby generator
- New heating and air conditioning systems (HVAC)
- Green roof
- Rain garden
- Landscaping
- Roof replacement



Sunset Pump Station



Sunset Pump Station conceptual site layout

Green roof

The project team is considering planting lightweight, low growing plants on the roof of the Sunset Pump Station.

Green roof benefits include:

- Help with heating and cooling
- Allow stormwater runoff to soak in before it reaches Lake Sammamish
- Camouflage building equipment to improve views

Examples of green roofs

Sunset and Heathfield Pump Stations and Force Main Upgrade
Examples of green roofs



EPA Region 10 Headquarters, Seattle



Seattle City Hall



Ballard Public Library

Next station

Take notes as you go

You can use these notes later in the comments section

Take notes here.

Want to learn more?

Visit the project website: www.kingcounty/sunsetheathfield

Share this site with neighbors or friends





Sunset and Heathfield Pump Stations and Force Main Upgrade

Welcome Project Overview Sunset Pump Station **Heathfield Pump Station** Force Main Envision: Equity and Sustainability Provide Your Input Thank you

Heathfield Pump Station

Next

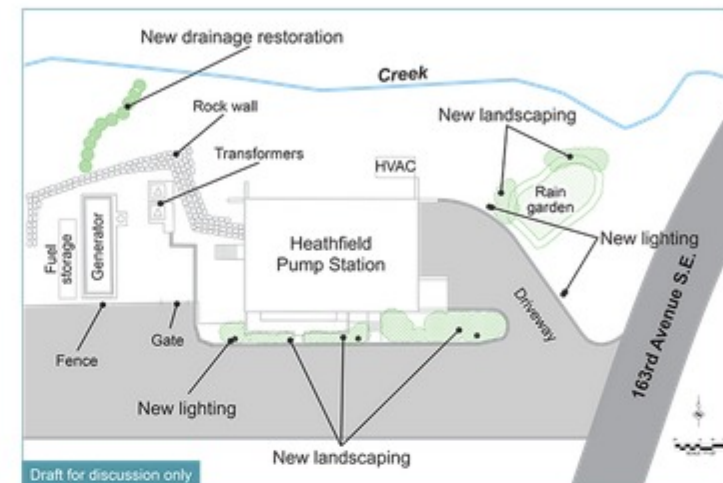
Heathfield Pump Station is located on 163rd Avenue S.E.

Improvements to the Heathfield Pump Station include:

- 4 new pumps to increase capacity
- New electrical and controls systems
- New standby generator
- New heating and air conditioning systems (HVAC)
- Rain garden
- Landscaping
- Roof replacement
- New lighting

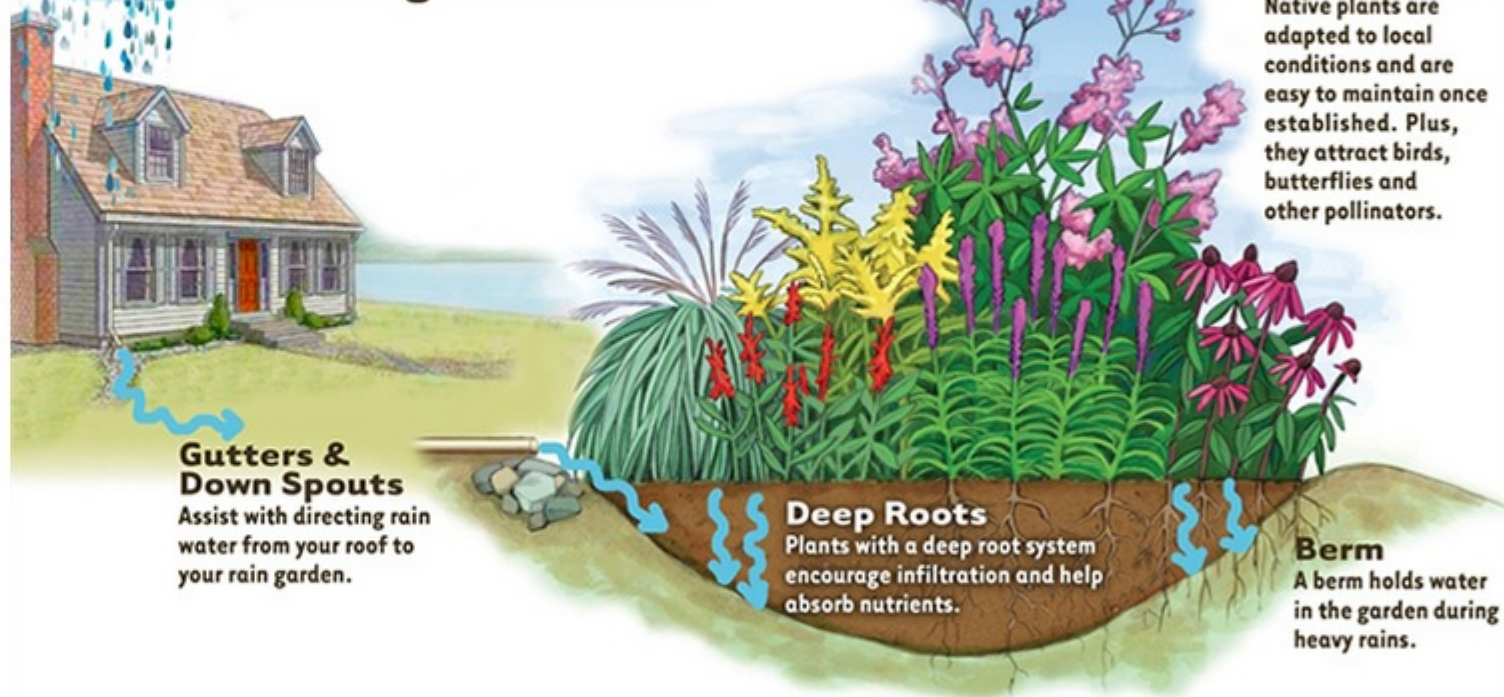


Heathfield Pump Station



Heathfield Pump Station conceptual site layout

How does a rain garden work?



Next station

Take notes as you go

You can use these notes later in the comments section

Take notes here.

Want to learn more?

Visit the project website: www.kingcounty/sunsetheathfield

Share this site with neighbors or friends





Sunset and Heathfield Pump Stations and Force Main Upgrade

Welcome

Project Overview

Sunset Pump Station

Heathfield Pump Station

Force Main

Envision: Equity and Sustainability

Provide Your Input

Thank you

Next

Force Main

The current 12 inch sewer force main pipe will be replaced with a 24 inch pipe to increase conveyance capacity. The new force main pipe will run from the Sunset Pump Station on West Lake Sammamish Parkway S.E. along S.E. 38th Street and 164th Place S.E. where it will connect to the Heathfield Pump Station on 163rd Avenue S.E. From the Heathfield Pump Station the new force main pipe will run along S.E. 35th Place and end at S.E. Eastgate Way.

Construction Methods

Two different construction methods, explained below, will be used to install the new force main pipe. Low-impact construction methods will be used where the new force main pipe crosses Vasa Creek.

Method 1: Horizontal Directional Drilling (HDD)

A trenchless method of installing underground pipes. HDD will be used from Sunset Pump Station near Vasa Park to 166th Avenue S.E. (see map)

- Does not require digging trenches along roadways.
- Uses drilling rig equipment on the surface to install pipe underground from point to point without the need for open excavations.
- Reduces traffic impacts to West Lake Sammamish Parkway S.E.
- Lower impact to neighbors and residents.
- Reduces impacts to trees and wetlands along S.E. 38th Street.
- Requires a large staging area on both ends of the pipe.
- Requires specific site conditions to be cost-effective.

Method 2: Open cut

A method of installing underground pipes that requires digging an open trench. Open cut will be used from 166th Avenue S.E. to S.E. Eastgate Way.

- Requires digging trenches in segments using backhoes and dump trucks.
- Impacts roadways; traffic detours will likely be necessary.
- Access to driveways will always be maintained.
- Paving is restored to original condition or better.
- Most common method for installing pipelines.
- Provides flexibility during construction to work around existing utilities.

Map of construction techniques by area



Click on the above photo to view larger

Construction Methods



Click on a photo above to view construction slide show

Next station



King County

Department of Natural Resources and Parks
Wastewater Treatment Division

ONLINE OPEN HOUSE: FEBRUARY 23 - MARCH 6, 2015

Sunset and Heathfield Pump Stations and Force Main Upgrade

Welcome

Project Overview

Sunset Pump Station

Heathfield Pump Station

Force Main

Envision: Equity and Sustainability

Provide Your Input

Thank you

Next

Envision: Equity and Sustainability

King County works to build and operate facilities that benefit the local community, environment, and economy on all our projects. The good news is King County can now earn a certificate for these efforts. The Envision program provides a framework to help measure how well an organization incorporates sustainability on infrastructure projects. Some of the factors King County considers include:

- Health and safety
- Reliability of the system
- Lifecycle cost
- Potential benefits and burdens associated with the wastewater system

Equity

King County works to advance equity and social justice throughout our project areas. We focus on fairness and provide opportunities for everyone's voice to be heard. We plan to include the following strategies on this project:

- Educate the community about King County's wastewater system
- Coordinate with City of Bellevue and nearby schools
- Provide translated materials to non-English speakers
- Incorporate an artistic kiosk with information about our project in the community

Sustainability

King County works to use their resources wisely and protect the environment. We plan to include the following strategies on this project:

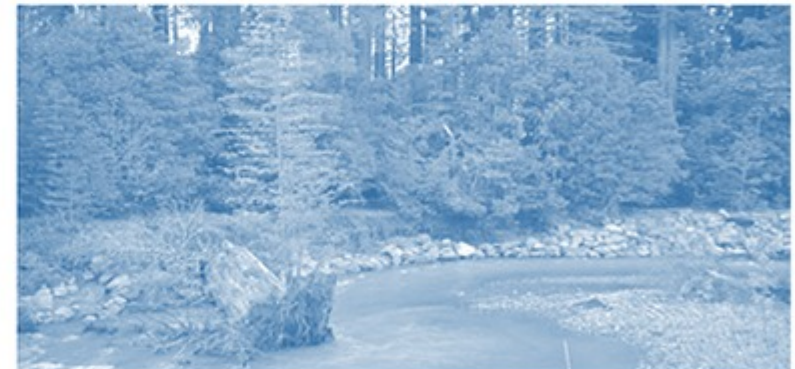
- Green roof and shoreline protection at Sunset Pump Station
- Rain gardens at each pump station
- Vasa Creek protection throughout the project area
- Energy efficient equipment
- Use of sustainable materials

Link to

- [More information about the Envision process](#)
- [More information about King County's commitment to equity and social justice](#)
- [King County Determinants of Equity](#)

Next station

Envision Categories





King County

Department of Natural Resources and Parks
Wastewater Treatment Division

ONLINE OPEN HOUSE: FEBRUARY 23 - MARCH 6, 2015

Sunset and Heathfield Pump Stations and Force Main Upgrade

Welcome

Project Overview

Sunset Pump Station

Heathfield Pump Station

Force Main

Envision: Equity and Sustainability

Provide Your Input

Thank you

Provide Your Input

Next

We Want to Hear from You!

Lighting

The large streetlights will be removed from the Sunset Pump Station and replaced with lower impact lighting.

Fencing

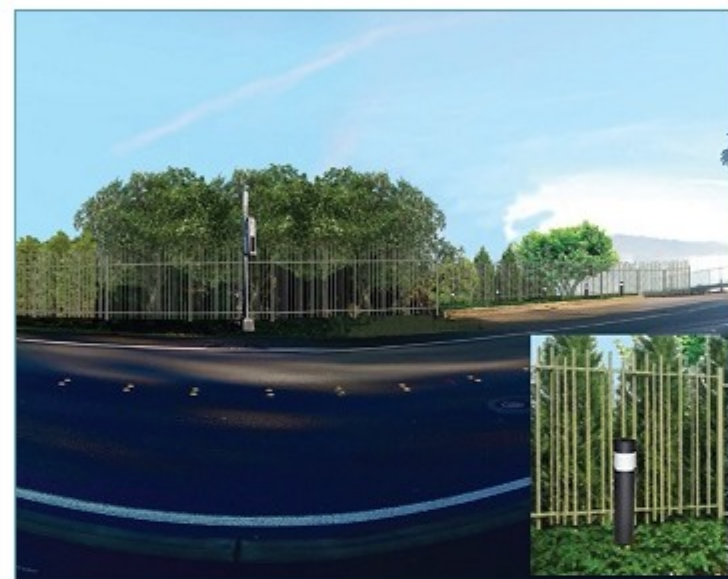
The fencing at Sunset Pump Station that runs along West Lake Sammamish Parkway S.E. is going to be replaced.

[Click here](#) to choose your favorite option and share your thoughts.

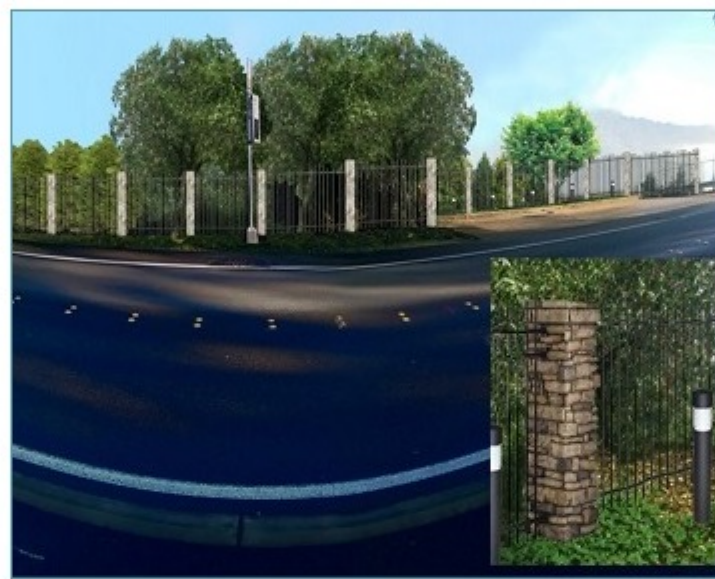
Current fencing and lighting



Option 1: Metal fence with no columns, lighting with bollards



Option 2: Metal fence with stone columns, lighting with bollards



Option 3: Metal fence with stone columns, lighting embedded in the stone column



Please complete the form below to be added to the project mailing list or to ask a question of King County. If you would like to stay anonymous, please write "anonymous" in all three contact fields. Questions will be answered promptly.

First Name

Last Name

Email Address

Comment*



King County

Department of Natural Resources and Parks
Wastewater Treatment Division

ONLINE OPEN HOUSE: FEBRUARY 23 - MARCH 6, 2015

Sunset and Heathfield Pump Stations and Force Main Upgrade

Welcome

Project Overview

Sunset Pump Station

Heathfield Pump Station

Force Main

Envision: Equity and Sustainability

Provide Your Input

Thank you

Thank you

Thank you for visiting the Sunset and Heathfield Pump Stations and Force Main Upgrade Project online open house!

Forgot to tell us what fencing and light you'd like to see at the Sunset Pump Station? [Click here](#) to give us your input!



Take notes as you go

You can use these notes later in the comments section

Take notes here.

Want to learn more?

Visit the project website: www.kingcounty/sunsetheathfield

Share this site with neighbors or friends

