

# Sunset and Heathfield Pump Stations Upgrade

2016

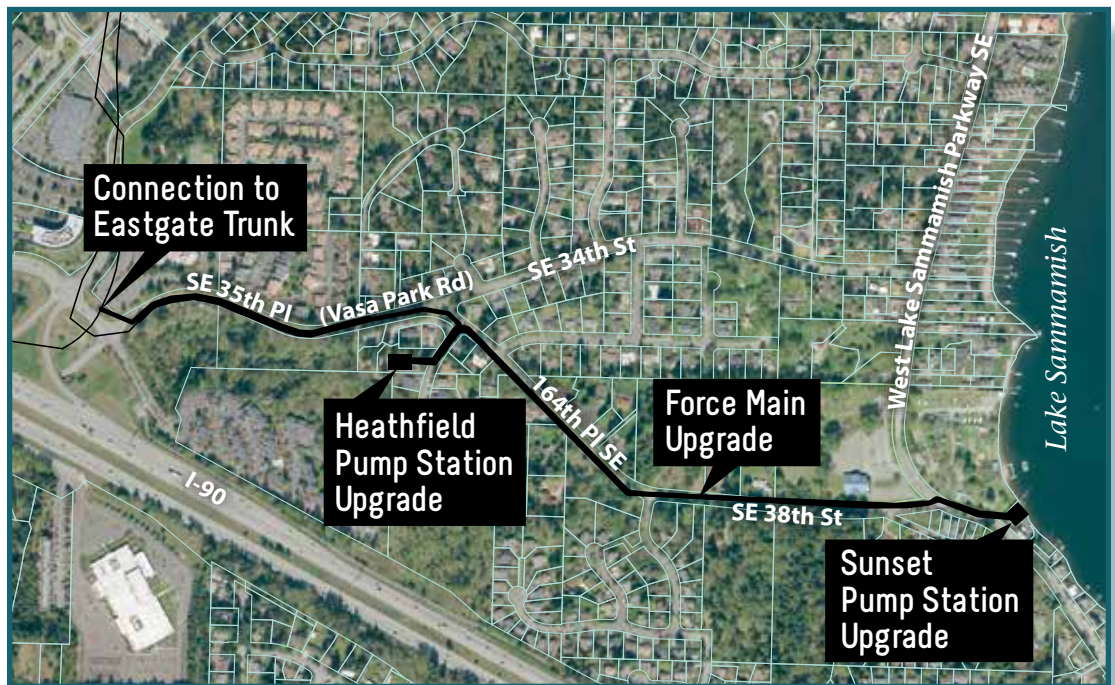
## Final designs for the project are complete!

After nearly three years of design, the final design for the Sunset and Heathfield Pump Stations upgrade projects have completed. Look inside to learn more about how the community influenced design and see the final site plans.

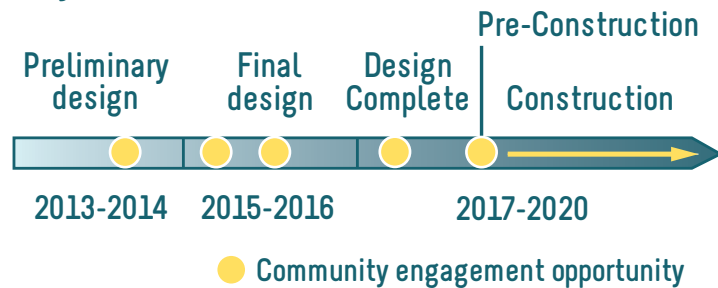
### What's next?

Now that final design for the project is complete, King County will advertise a contract to construct the pump stations and force main upgrades. King County will have a contractor on board by early 2017. Construction is expected to start as early as spring 2017.

King County is committed to being a good neighbor during construction and reducing disruptions to where possible. Before construction begins, you are welcome to attend a public meeting where you can meet the construction team, learn more about the construction schedule, ask questions, and get more information about what to expect while work is underway.



### Project Timeline



### How the community influenced the design

Since 2013, residents, businesses, and community helped King County shape the design for the Sunset and Heathfield Pump Stations. You joined us at open houses, neighborhood briefings and events, and provided input through comment forms, surveys, and conversations with project staff.

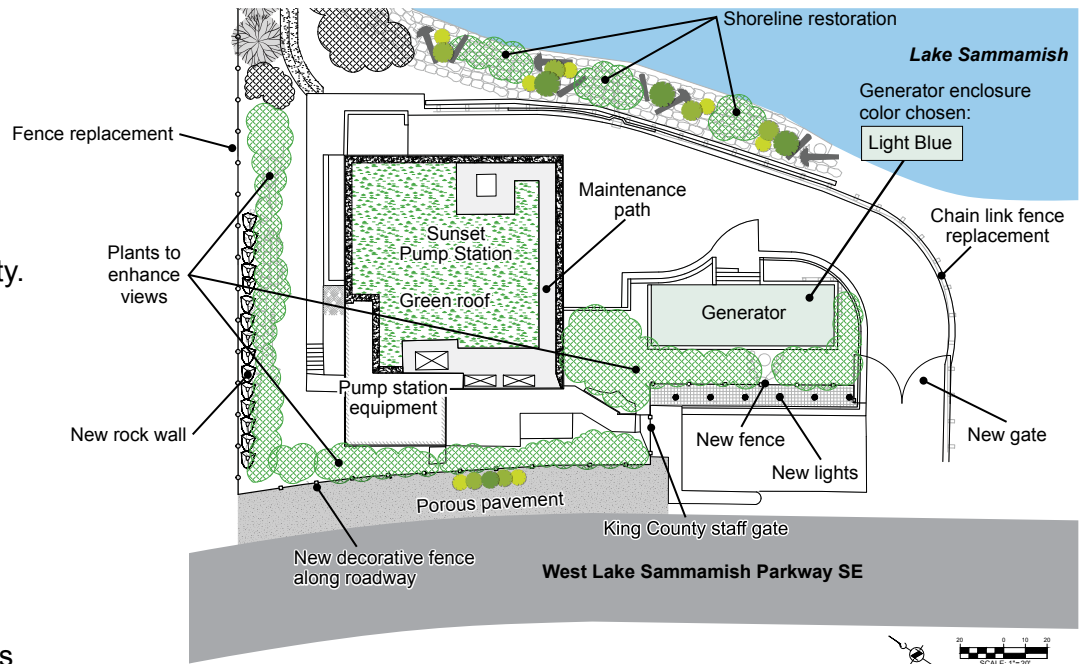
## INSIDE:

Read more about what we've heard from you and how your input helped shape design.

## Sunset Pump Station site layout

### Final Design

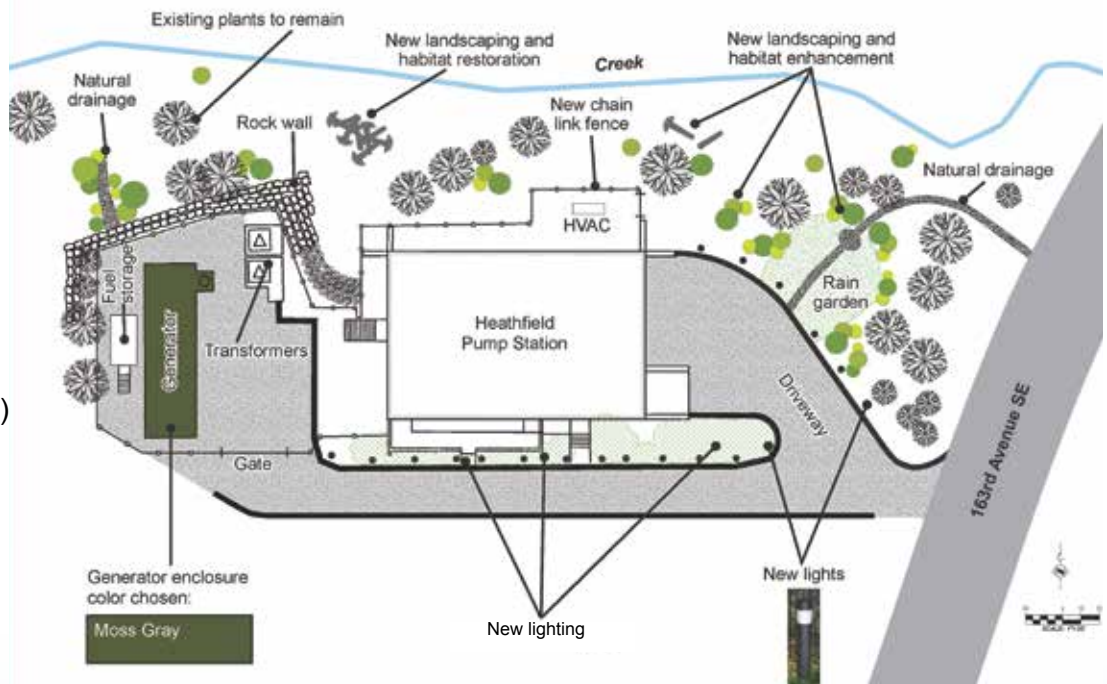
King County's facility upgrades design matches the look and feel of the surrounding neighborhood and will include four new pumps for increased capacity. The upgrades include new generators that may result in higher noise levels during severe storm events.

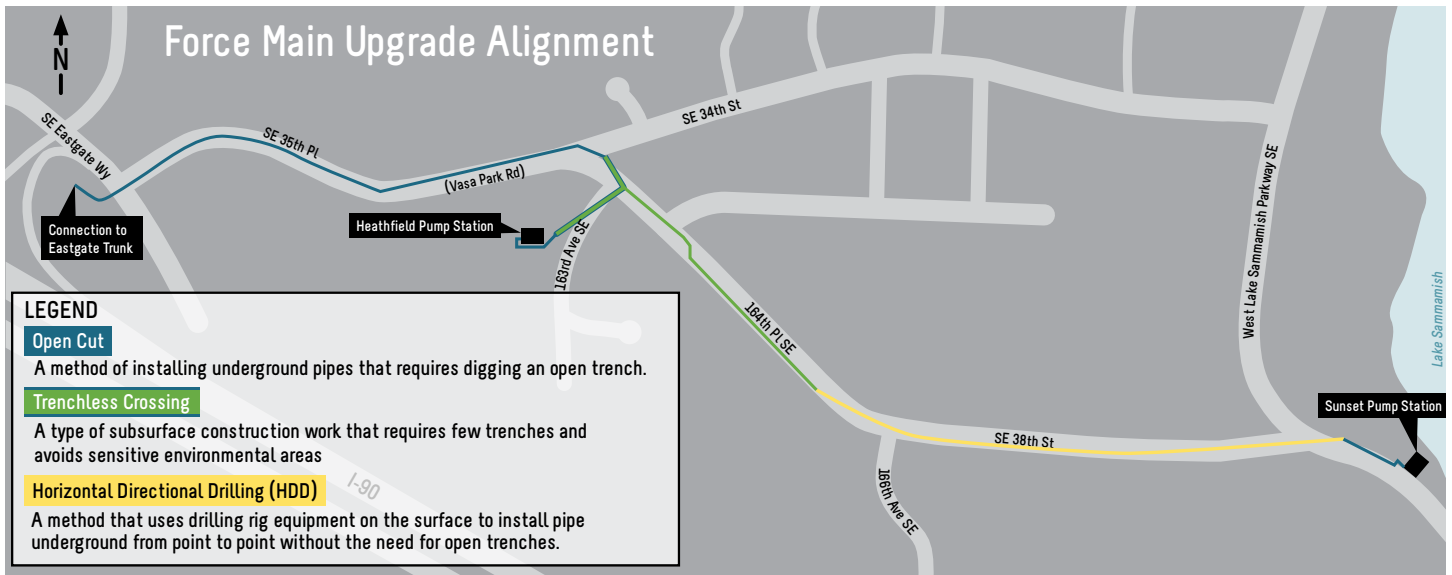


Some of the key features incorporated into the designs at each pump station include:

- New standby generator
- New bollard lighting
- New and replaced fencing
- Landscaping
- Roof replacement
- Shoreline and habitat restoration
- Green roof (Sunset)
- Porous paving system (Sunset)
- Rain garden (Heathfield)

## Heathfield Pump Station site layout






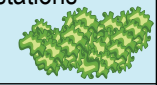
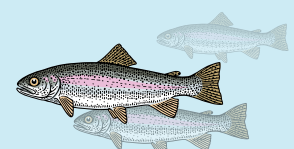
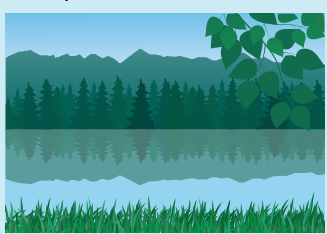
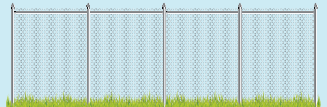
## Force Main Alignment

One of the force main pipes, which connect the pump stations to the larger system, will be upgraded from the existing 12-inch pipe to a 24-inch pipe. The force main alignment (diagram above) shows where the force main will be placed along SE 35th Pl, 164th Pl SE, and SE 38th St.

Construction impacts were a main consideration when choosing the alignment of the force main.

Three installation methods are being used to minimize roadway impacts and expedite the time needed to install the force main pipe: open cut construction, including trenchless crossings, and horizontal directional drilling (HDD). For more information about each of these methods, check out the latest factsheet on the library page of the project's website: [www.kingcounty.gov/sunsetheathfield](http://www.kingcounty.gov/sunsetheathfield)

Installation of the force main will require temporary road closures at times. You will receive in advance, notice of these events. King County will be contacting residents along the alignment before construction starts with more information about what to expect.

Community Preferences	Resulting Design Decision
 <p>Screen the pump stations using landscaping </p>	<p>1 Native trees and shrubs will be used to screen both pump stations from the surrounding neighborhood</p>
<p>Prioritize sustainability, fish and wildlife habitat, and green stormwater infrastructure </p>	<p>2 Habitat enhancing log structures and plants along the Lake Sammamish shoreline at the Sunset Pump Station</p> <p>3 New green roof at the Sunset Pump Station</p> <p>4 New rain garden at the Heathfield Pump Station</p>
<p>Match generator enclosure colors to the look and feel of the surrounding area</p>	<p>5 Generator enclosure colors were chosen based on neighbor feedback</p>
<p>Maintain private viewpoints by limiting building height and choosing site specific tree species </p>	<p>6 While the new equipment on the roof of the Sunset Pump Station will be 01.5 feet taller than the existing pump station, current sightlines to the lake will not be obscured.</p> <p>Native trees and shrub species were chosen to screen the pump stations while also maintaining views of Lake Sammamish where possible, specifically near the Sunset Pump Station</p>
<p>Use community preferences from the 2015 community survey for the fencing and lighting at the Sunset Pump Station </p>	<p>8 The Sunset Pump Station will have a straight metal fence with stone columns based on community preference</p> <p>9 Both pump stations will feature new, energy-efficient, straight bollard lighting based on community preference</p>



# King County

Department of Natural Resources and Parks

## Wastewater Treatment Division

201 S. Jackson St., KSC-NR-0505

Seattle, WA 98104-3855

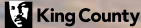
PRESORTED  
STANDARD MAIL  
US POSTAGE  
PAID  
SEATTLE, WA  
PERMIT NO.836

## Join us for an Open House and Pump Station Tours

**When:** Saturday, Jan. 28, 2017

**Time:** 1-3 p.m.

**Location:** Vasa Park Ballroom  
3560 West Lake Sammamish Rd SE,  
Bellevue, WA 98008



Department of  
Natural Resources and Parks  
Wastewater Treatment Division

## Sunset and Heathfield Pump Stations Upgrade

### Providing reliable wastewater service for years to come

For 50 years, the Sunset and Heathfield pump stations and sewer pipes have provided reliable sewer service, sending sewage from Sammamish, Issaquah, and Bellevue to be treated at King County's treatment plant in Renton. The pump stations are nearing capacity and need to be replaced to help serve the growing population for years to come.

Both pump stations will be upgraded with four new, larger pumps. The force main pipes, that connect the pump stations to the King County's larger system, will also be upgraded from the existing 12-inch pipe to a 24-inch pipe.

Once upgraded, the system will have the capacity to serve the region for years to come. This is one of several projects being implemented across King County to ensure reliable wastewater service into the future.

### For more information

- Ask us to come to your community group meetings
- Join our mailing list to receive project newsletters and meeting announcements
- Contact De'Sean Quinn: 206-477-5417
- Email: [desean.quinn@kingcounty.gov](mailto:desean.quinn@kingcounty.gov)

Submit comments online at the project website: [www.kingcounty.gov/sunsetheathfield](http://www.kingcounty.gov/sunsetheathfield)

Alternate formats available: call 206-477-5371 or TTY Relay: 711