



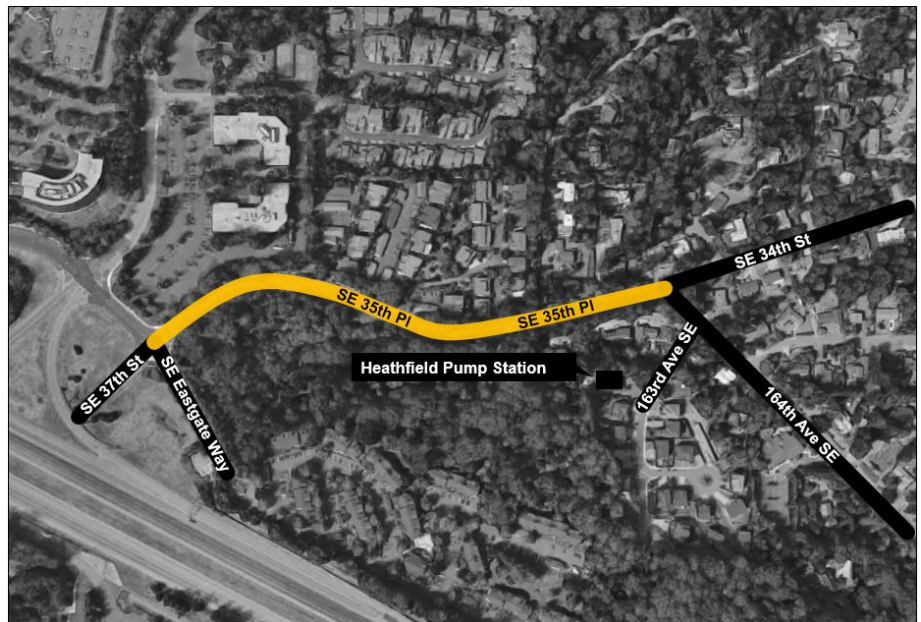
Sunset and Heathfield Pump Stations and Force Main Upgrade

Construction Update – August 15, 2017

Southeast 35th Place single lane closures starting as early as 8/21

Starting as early as Monday, August 21st, King County Wastewater Treatment Division's construction contractor plans to excavate potholes in the sidewalks and roadway along Southeast 35th Place to locate utilities. The potholing is anticipated to last two days.

This work is part of the County's project to upgrade the Sunset and Heathfield pump stations and related sewer pipes that send sewage from Sammamish, Issaquah, and Bellevue to King County's treatment plant in Renton.



What is potholing?

The utility locating method, commonly called "potholing," uses vacuum and air-compression technology to excavate pavement or other material without disrupting utility lines. Contractors will use truck-mounted equipment to dig small holes (6-inch diameter or less) approximately 4 to 8 feet below the surface to determine the locations of existing utility lines in the project area.

What to expect:

- Moving single lane closure on S.E. 35th Pl.
- Signs and flaggers to direct traffic around work
- Expect some traffic delays when driving through the area
- Equipment and noise close to the work areas
- When crews are done, sites will be restored

For more information

- Visit www.kingcounty.gov/sunsetheathfield
- Call the project hotline at **206-296-7800**
- Email De'Sean Quinn at desean.quinn@kingcounty.gov