

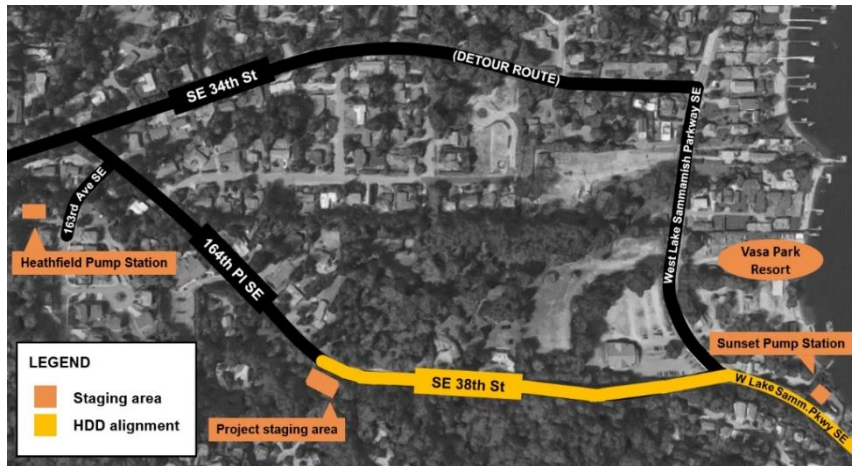


Sunset and Heathfield Pump Stations and Force Main Upgrade

Crews continue to prepare for Horizontal Directional Drilling (HDD) at Sunset Pump Station; HDD work to continue through Spring 2018

As early as Jan. 3, crews will begin the first of three steps in the HDD process: drilling an underground pilot bore.

This work will establish the new pipe's pathway between the Sunset Pump Station and the project staging area near 164th Place Southeast (see map). While the work will occur mostly underground, there will be surface equipment and increased traffic near the Sunset Pump Station.



What to expect during HDD work (flip over for HDD details and schedule information):

- Increased noise (including hammering) during work hours, particularly near the Sunset Pump Station and project staging area
- Work on weekdays and weekends from 7 a.m. to 5 p.m.
 - **Note:** Crews plan to stop work over the Thanksgiving weekend from November 23 - 27
- Intermittent lane closures on Southeast 38th Street to unload equipment and materials
- Intermittent single lane closures on West Lake Sammamish Parkway Southeast near the Vasa Park Resort and the Sunset Pump Station for delivery of equipment
- Signs and flaggers to direct traffic around work
- Equipment and vibrations close to the work areas



Crews will install steel conductor casings (left) before drilling the pilot bore (right).

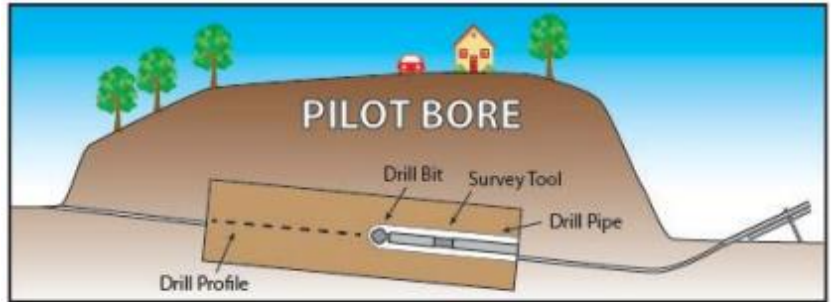
The HDD process

Horizontal directional drilling (HDD) is typically used to install pipelines under busy roadways and environmentally sensitive areas (such as wetlands and streams). The contractor uses a machine on the surface to drill an underground pathway for the new pipe, and then pulls the pipe through the new path. See below for an overview of how HDD works.

Pilot Bore

*approx. two weeks**

The contractor builds entry and exit points for the drilling operation. To protect the surface, steel pipes called casings will be installed where the drill enters and exits. The entry and exit points for this pipe will be at the Sunset Pump Station and in the King County right-of-way along 164th Pl. S.E. where it turns into S.E. 38th St.

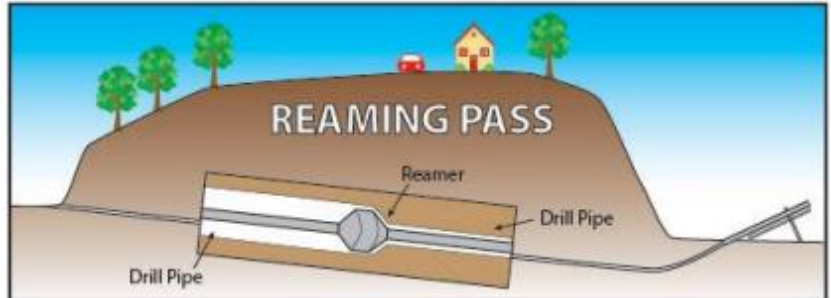


Then the contractor will complete the pilot bore, establishing the underground path for the new pipeline.

Reaming Pass

*approx. one month**

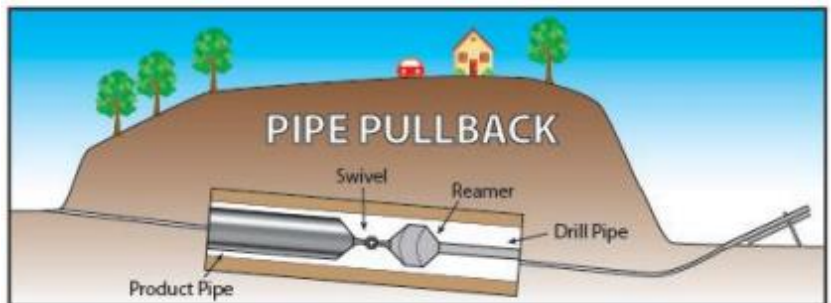
The contractor enlarges the hole to the final pipe size using a reamer. Mud from drilling in this step is collected and recycled.



Pipe Pullback

*approx. 2-3 days**

Once the bore hole is prepared, the pipe is pulled through the hole. For this project, the pipe will be floated on Lake Sammamish and pulled through from east to west. Pullback must be done without stopping. After the pipe is in place, crews will spend several weeks grouting and testing the pipe.



**The schedule and duration for HDD work is tentative and is subject to change as work progresses. We will continue to provide email notices and door fliers with updates on timing of specific construction activities.*



Sign up for email updates!

Construction notices will not always be delivered door to door. To stay informed, sign up for email construction updates at kingcounty.gov/sunsetheathfield.

For more information

- Visit www.kingcounty.gov/sunsetheathfield
- Call the project hotline at **206-296-7800**
- Email De'Sean Quinn at desean.quinn@kingcounty.gov

Alternative Formats Available
206-477-5371 TTY Relay: 711