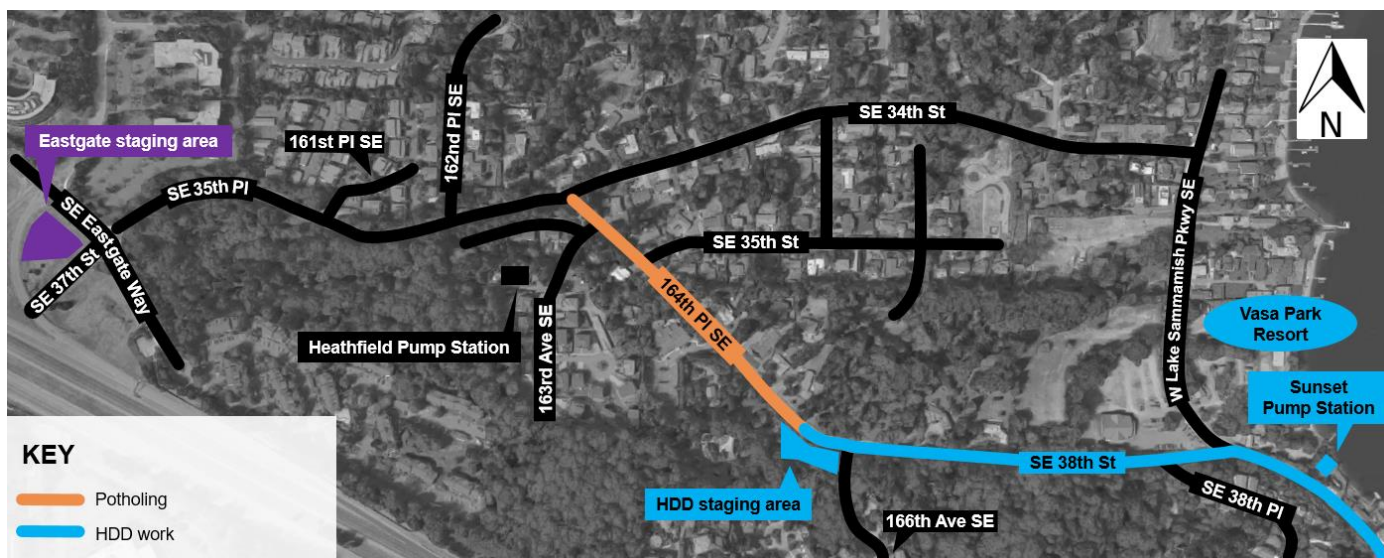




Construction Update – December 1, 2017

Heads up: Increased noise and weekend work as crews prepare for pipe installation

Crews continue to prepare for pipe installation in multiple locations between the Sunset and Heathfield pump stations. Below, you will see a map and descriptions of upcoming work activities for the next few weeks.



164th Place Southeast

Work hours: weekdays 7 a.m. to 5 p.m.

Over the next several weeks, King County’s contractor will continue to excavate potholes in the roadway to locate utilities along 164th Place Southeast. You can expect intermittent single-lane closures of 164th Place Southeast while crews pothole.

Sunset Pump Station, Vasa Park, and project staging area on 164th

Work hours: weekdays 7 a.m. to 5 p.m., weekends 7 a.m. to 7 p.m.

Crews are continuing to prepare for pipe installation via horizontal directional drilling (HDD). HDD is a method typically used to install pipelines under busy roadways and environmentally sensitive areas (such as wetlands and streams). The contractor uses a machine on the surface to drill an underground pathway for the new pipe, and then pulls the pipe through the new path.

Beginning as soon as the week of Dec. 4, you can expect:

- Crews to install pipe conductor casing using a pneumatic hammer along 164th Place Southeast and near Vasa Park. This work is loud and you may hear hammering near both locations.
- Crews to begin set up of drilling rigs near 164th Place Southeast and near Vasa Park to excavate launch pits
- A generator to run during work hours, Monday through Saturday, at the project staging area on 164th Place Southeast to dewater. Dewatering removes underground water by pumping it out of a set work area to allow for underground construction.

Eastgate staging area (intersection of S.E. Eastgate Way and S.E. 37th St.)

Work hours: weekdays 7 a.m. to 5 p.m.

You can expect increased activity and equipment at the staging area while crews use a drill rig and install piles.

What to expect

- Increased noise during work hours
- The fused pipe to float on Lake Sammamish until it is pulled through the underground pathway on Southeast 38th Street in 2018
- Truck traffic on West Lake Sammamish Parkway Southeast and Southeast 38th Street during working hours
- Intermittent single-lane closures on West Lake Sammamish Parkway Southeast near the Vasa Park Resort and the Sunset Pump Station for delivery of equipment
- Intermittent single-lane closures on 164th Place Southeast while crews pothole
- Signs and flaggers to direct traffic around work or to detour routes
- Equipment, dust, and vibrations close to the work areas
- Temporary roadway patches so that crews can re-open affected lanes to traffic when they are not working

The schedule and duration for construction is tentative and is subject to change as work progresses. We will continue to provide email notices with updates on timing of specific construction activities.



Sign up for email updates!

Construction notices will not always be delivered door to door.
To stay informed, sign up for email construction updates at
kingcounty.gov/sunsetheathfield.

For more information

- Visit www.kingcounty.gov/sunsetheathfield
- Call the project hotline at **206-296-7800**
- Email De'Sean Quinn at desean.quinn@kingcounty.gov

Alternative Formats Available
206-477-5371 TTY Relay: 711