



King County

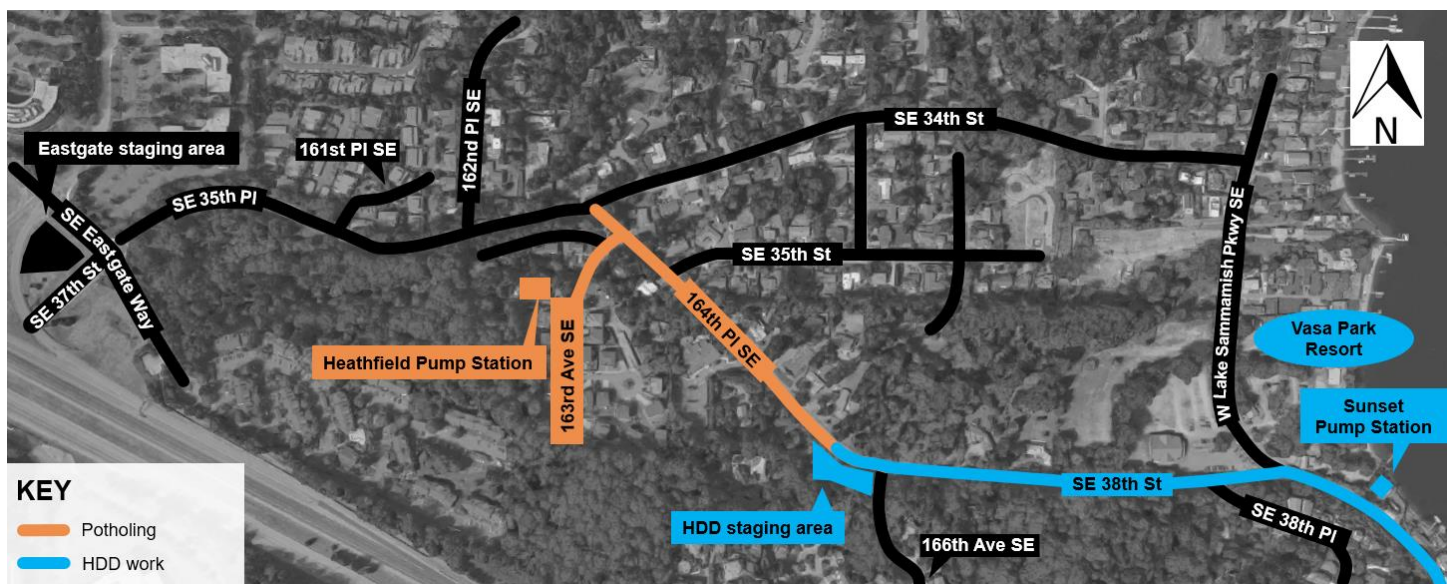
Department of Natural Resources and Parks
Wastewater Treatment Division

Sunset and Heathfield Pump Stations and Force Main Upgrade

Construction Update – December 8, 2017

Sewer pipe preparation work continues. Increased noise and additional weekend work expected on December 17.

Crews continue to prepare for pipe installation in multiple locations between the Sunset and Heathfield pump stations. Read below to learn more about the work taking place, by location. Please know that crews will be moving between locations as they continue to install the pipe and upgrade the pump stations.



Heathfield Pump Station and 164th Place Southeast

Work hours: weekdays 7 a.m. to 5 p.m.

Over the next several weeks, King County’s contractor will continue to excavate potholes in the roadway to locate utilities along 164th Place Southeast and begin excavating potholes near the Heathfield pump station. You can expect intermittent single-lane closures while crews pothole.

Sunset Pump Station, Vasa Park, and project staging area on 164th

Work hours: 7 a.m. to 7 p.m. Monday - Saturday

Crews are continuing to prepare for pipe installation using horizontal directional drilling (HDD). HDD is a method typically used to install pipelines under busy roadways and environmentally sensitive areas (such as wetlands and streams). The contractor uses a machine on the surface to drill an underground pathway for the new pipe, and then pulls the pipe through the new path.

The contractor will complete excavation and installation of pipe conductor casing at the entrance pit near Sunset Pump Station the week of Dec. 11th. Beginning the week of Dec. 11, you can expect:

- To see additional equipment onsite near Vasa Park and 164th Place Southeast. The additional equipment are necessary to support the HDD work..
- Crews to install pipe conductor casing for the exit pit at the HDD staging area on 164th Place Southeast. This work is loud and you may hear noise from hammering.

- Several generators running during work hours at the project staging area on 164th Place Southeast to dewater and support HDD work. Dewatering removes underground water by pumping it out of a set work area to allow for underground construction.

While the crews prepare to install the pipe, the fused pipe will float on Lake Sammamish. Due to limited space for staging, the pipe had to be fused and floated on Lake Sammamish before crews could mobilize equipment to drill an underground pathway and install the floating pipe. Crews plan to pull the floating pipe out of the lake by end of February 2018. For more information about the pipe's location on Lake Sammamish and the safety features on the pipe, check out our new flier on our website.

What to expect throughout construction:

- Increased noise during the approved work hours
- The fused pipe to float on Lake Sammamish until it is pulled through the underground pathway under Southeast 38th Street by end of February 2018.
- Truck traffic on West Lake Sammamish Parkway Southeast and Southeast 38th Street during working hours
- Intermittent single-lane closures on West Lake Sammamish Parkway Southeast near the Vasa Park Resort and the Sunset Pump Station for equipment deliveries and construction activities.
- Intermittent single-lane closures on 164th Place Southeast while crews pothole
- Signs and flaggers to direct traffic around work or to detour routes
- Equipment, dust, and vibrations close to the work areas
- Temporary roadway patches so that crews can re-open affected lanes to traffic when they are not working

The schedule and duration for construction is tentative and is subject to change as work progresses. We will continue to provide email notices with updates on timing of specific construction activities.



Sign up for email updates!

Construction notices will not always be delivered door to door.

To stay informed, sign up for email construction updates at

kingcounty.gov/sunsetheathfield.

For more information

- Visit www.kingcounty.gov/sunsetheathfield
- Call the project hotline at **206-296-7800**
- Email De'Sean Quinn at desean.quinn@kingcounty.gov

**Alternative Formats Available
206-477-5371 TTY Relay: 711**