

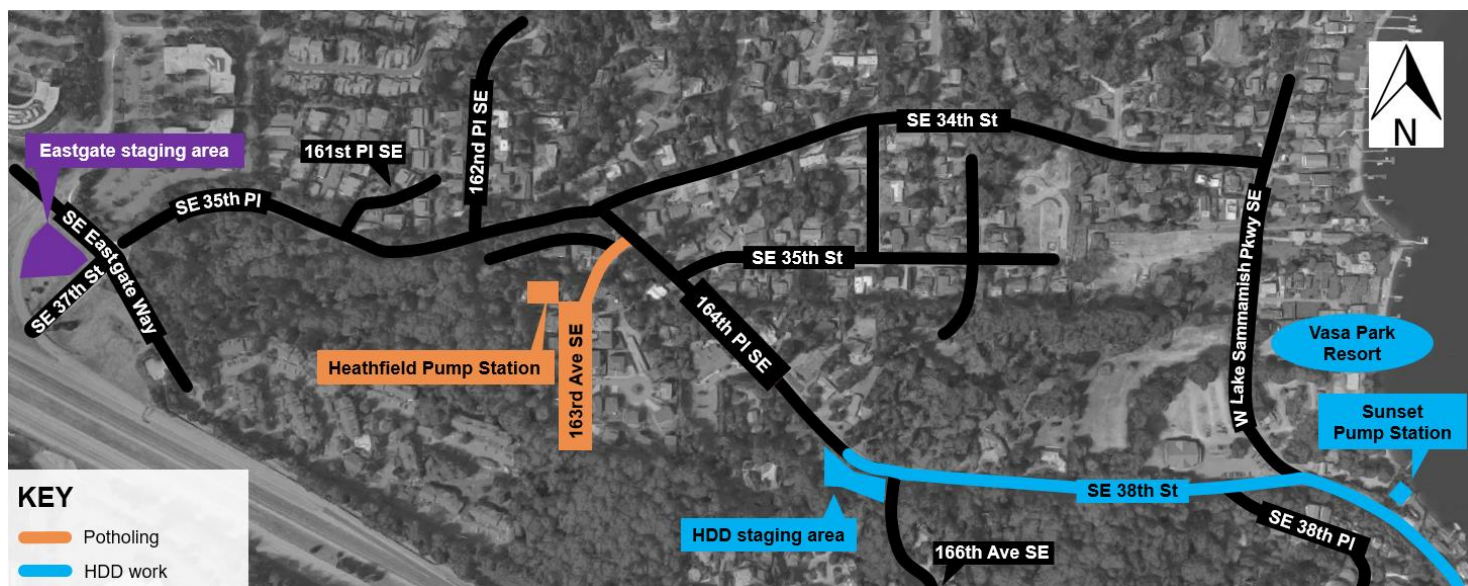


Sunset and Heathfield Pump Stations and Force Main Upgrade

Construction Update – December 15, 2017

Sewer pipe preparation work continues.

Crews continue to prepare for pipe installation in multiple locations between the Sunset and Heathfield pump stations. Please know that crews will be moving between locations as they continue to install the pipe and upgrade the pump stations.



Heathfield Pump Station

Work hours: weekdays 7 a.m. to 7 p.m.

Over the next several weeks, King County’s contractor will continue to excavate potholes in the roadway to locate utilities near the Heathfield pump station. You can expect intermittent single-lane closures while crews pothole.

Sunset Pump Station, Vasa Park, and project staging area on 164th

Work hours: weekdays and weekends 7 a.m. to 7 p.m.

Crews are continuing to prepare for pipe installation using horizontal directional drilling (HDD) and beginning to upgrade the Sunset Pump Station. HDD is a method typically used to install pipelines under busy roadways and environmentally sensitive areas (such as wetlands and streams). The contractor uses a machine on the surface to drill an underground pathway for the new pipe, and then pulls the pipe through the new path.

What to expect:

- Crews to set wire along the path of the future HDD pipe on Southeast 38th Street on Sunday morning, December 17 starting as early as 7 a.m.
- Construction activity at the Sunset Pump station while crews continue to use a drill rig to install piles for a retaining wall

- Crews to install pipe conductor casing for the exit pit at the HDD staging area on 164th Place Southeast. Once this work is complete, crews will use these drill rigs to excavate around the exit pit. This work is loud and you may hear increased noise.
- A generator to run during work hours at the project staging area on 164th Place Southeast to dewater. Dewatering removes underground water by pumping it out of a set work area to allow for underground construction.

Eastgate staging area (intersection of S.E. Eastgate Way and S.E. 37th St.)

Work hours: weekdays 7 a.m. to 7 p.m.

You can expect continued construction activity at the staging area while crews use a drill rig to install piles.

What to expect throughout construction:

- Increased noise during work hours
- The fused pipe to float on Lake Sammamish until it is pulled through the underground pathway on Southeast 38th Street in early 2018. To learn more, see our [boater flier](#) on our website.
- Truck traffic on Southeast 38th Street during working hours
- Intermittent single-lane closures on West Lake Sammamish Parkway Southeast near the Vasa Park Resort and the Sunset Pump Station, 164th Place Southeast and Southeast 35th Place for delivery of equipment
- Intermittent single-lane closures near the Heathfield Pump station while crews pothole
- Signs and flaggers to direct traffic around work or to detour routes
- Equipment, dust, and vibrations close to the work areas
- Temporary roadway patches so that crews can re-open affected lanes to traffic when they are not working

The schedule and duration for construction is tentative and is subject to change as work progresses. We will continue to provide email notices with updates on timing of specific construction activities.



Sign up for email updates!

Construction notices will not always be delivered door to door.
To stay informed, sign up for email construction updates at kingcounty.gov/sunsetheathfield.

For more information

- Visit www.kingcounty.gov/sunsetheathfield
- Call the project hotline at **206-296-7800**
- Email De'Sean Quinn at desean.quinn@kingcounty.gov

**Alternative Formats Available
206-477-5371 TTY Relay: 711**