



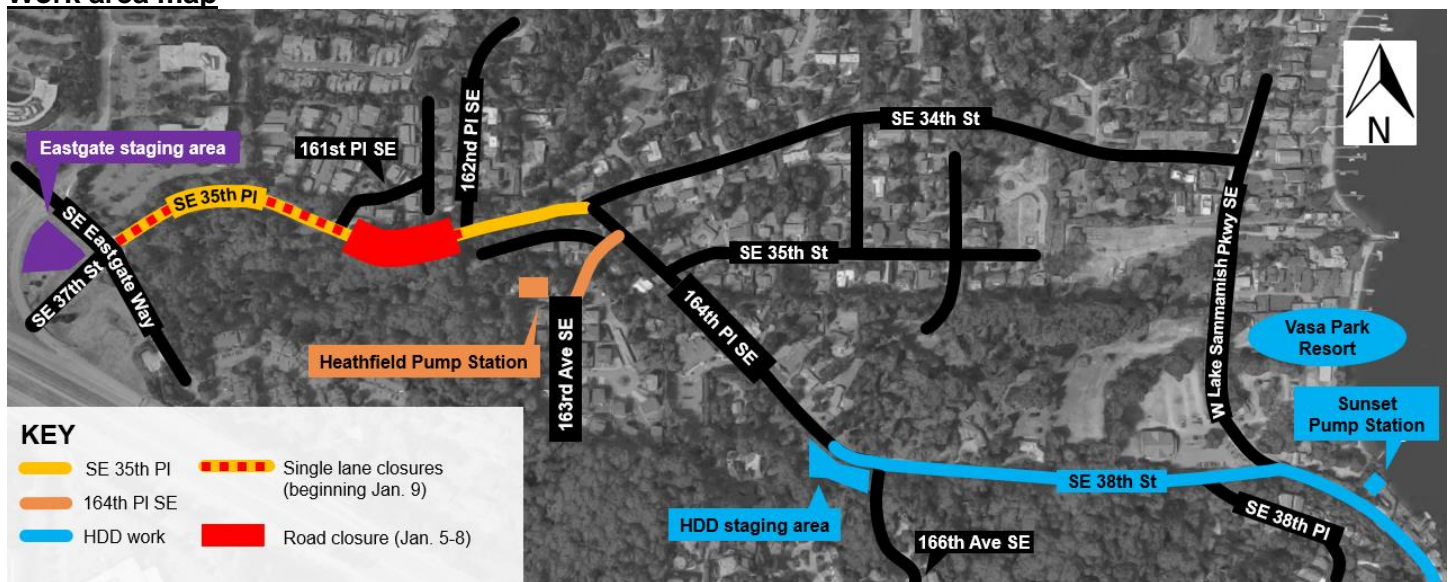
Sunset and Heathfield Pump Stations and Force Main Upgrade

Construction Update – December 21, 2017

Heads up: Southeast 35th Place CLOSED Jan. 5-8; other work continues

Crews continue to prepare for pipe installation in multiple locations between the Sunset and Heathfield pump stations. Read below to learn more about the work taking place, by location. Please know that crews will be moving between locations as they continue to install the pipe and upgrade the pump stations.

Work area map



Southeast 35th Place

Crews continue to prepare for pipe installation by locating underground utilities. Crews will begin installation in January using open-cut construction. Open cut involves digging an uncovered trench, laying pipe into the open trench and restoring all disturbed areas.

As early as Dec. 26:

- Crews will excavate potholes in the roadway to locate underground utilities
- Expect intermittent single-lane closures

Friday Jan. 5 at 10 p.m. to Monday Jan. 8 at 5 a.m.:

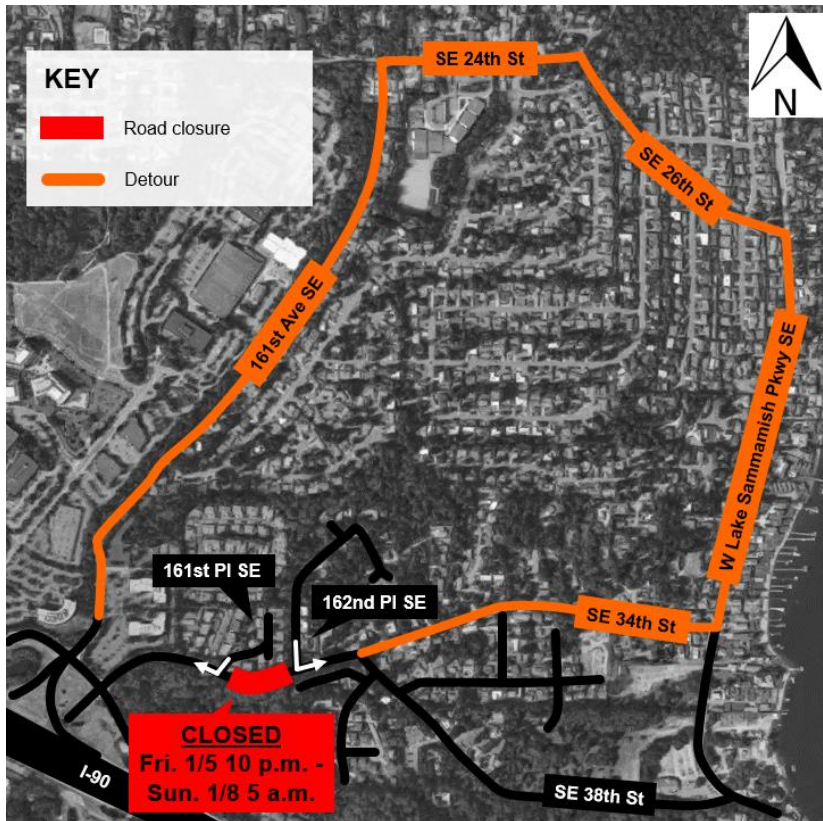
- **S.E. 35th PI. closed** between 161st and 162nd places southeast
 - 161st residents can turn right onto 35th
 - 162nd residents can turn left onto 35th
- **Nonstop work** to install pipe in the center of the road via open cut construction
- Noise within limits allowed by City of Bellevue

Starting Tuesday Jan. 9:

- Work weekdays 7 a.m. to 7 p.m. to continue installing pipe via open cut construction

- Intermittent single lane closures on S.E. 35th Pl.
- Two-way traffic maintained between 7-9 a.m. and 4-6 p.m.

Southeast 35th Place Detour Map



Heathfield Pump Station

Work hours: weekdays 7 a.m. to 7 p.m.

- Crews will excavate potholes near the Heathfield Pump Station
- Expect intermittent single-lane closures

HDD staging area on 164th

Work hours: weekdays and weekends 7 a.m. to 7 p.m.

Crews are continuing to prepare for pipe installation using horizontal directional drilling (HDD). You can expect:

- To see drill rigs onsite near 164th Place Southeast. Crews will use these drill rigs to excavate around the launch pit.
- Crews to install pipe conductor casing for the exit pit at the HDD staging area. This work is loud and you may hear noise from hammering.
- The next step, drilling a pilot bore, will begin as early as January.

For more information

- Visit www.kingcounty.gov/sunsetheathfield
- Call the project hotline at **206-296-7800**
- Email De'Sean Quinn at desean.quinn@kingcounty.gov

**Alternative Formats Available
206-477-5371 TTY Relay: 711**

- A generator to run during work hours at the project staging area on 164th Place Southeast to dewater. Dewatering removes underground water by pumping it out of a set work area to allow for underground construction.

Eastgate staging area (intersection of S.E. Eastgate Way and S.E. 37th St.)

Work hours: weekdays 7 a.m. to 7 p.m.

- Continued construction activity at the staging area, including excavating potholes on Southeast Eastgate Way
- Expect intermittent single-lane closures.

What to expect throughout construction:

- Increased noise during work hours
- The fused pipe to float on Lake Sammamish until it is pulled through the underground pathway on Southeast 38th Street in February 2018. For more information, see our [boater flier](#) on our website.
- Truck traffic and traffic impacts on West Lake Sammamish Parkway Southeast and 164th Place Southeast during working hours
- Intermittent single-lane closures on West Lake Sammamish Parkway Southeast near the Vasa Park Resort and the Sunset Pump Station for delivery of equipment
- Signs and flaggers to direct traffic around work or to detour routes
- Equipment, dust, and vibrations close to the work areas
- Temporary roadway patches so that crews can re-open affected lanes to traffic when they are not working

The schedule and duration for construction is tentative and is subject to change as work progresses. We will continue to provide email notices with updates on timing of specific construction activities.

For more information

- Visit www.kingcounty.gov/sunsetheathfield
- Call the project hotline at **206-296-7800**
- Email De'Sean Quinn at desean.quinn@kingcounty.gov

**Alternative Formats Available
206-477-5371 TTY Relay: 711**