



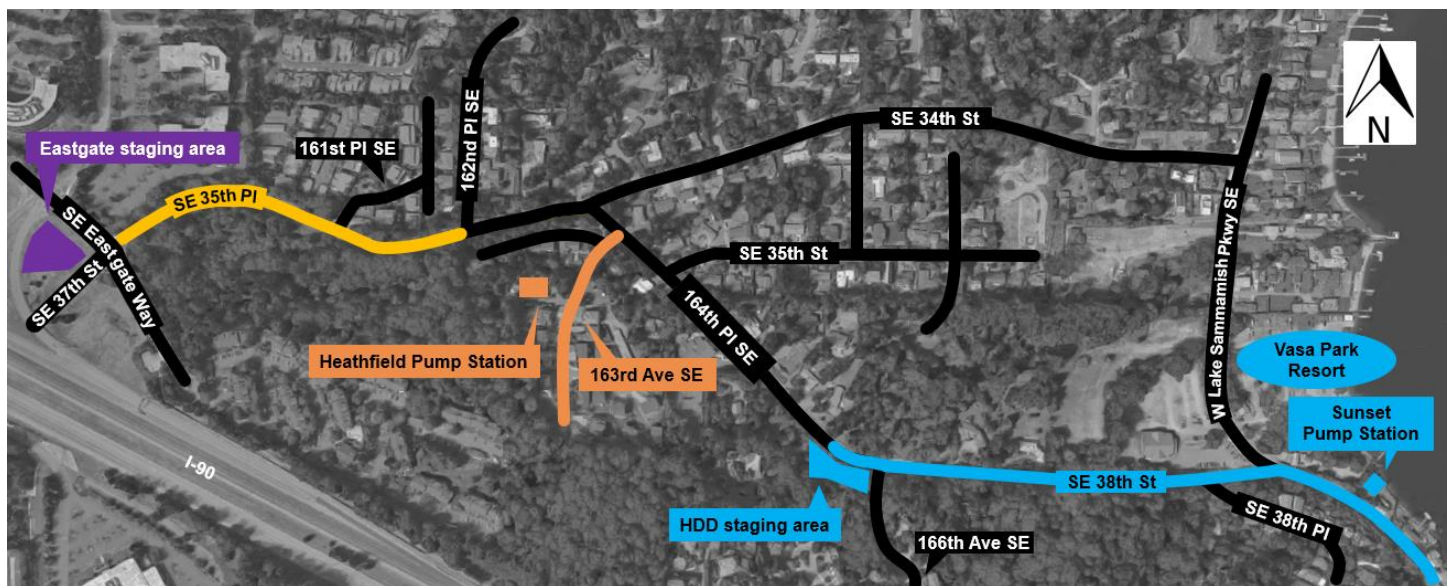
Construction Update – Jan. 12, 2018

Pump station and weekend HDD work continues

This weekend, crews will continue to prepare for pipe installation near the HDD staging area on SE 38th St and at the Sunset Pump Station between 7 a.m. and 7 p.m. on Saturday. On **Monday, Jan. 15**, crews will take the day off for Martin Luther King Jr. Day.

Please know that crews will be moving between locations as they continue to install the pipe and upgrade the pump stations.

Work area map



Eastgate staging area (intersection of S.E. Eastgate Way and S.E. 37th St.)

Work hours: weekdays 7 a.m. to 7 p.m.

Construction activities will continue in the Eastgate staging area, including concrete pouring and curing. You can expect equipment, noise and dust close to the staging area.

Southeast 35th Place

Work hours: weekdays 7 a.m. to 7 p.m.

Crews continue to prepare for pipe installation by excavating potholes along S.E. 35th PI.

Heathfield Pump Station and 163rd Avenue Southeast

Work hours: weekdays 7 a.m. to 7 p.m.

Crews will excavate potholes near the pump station and continue electrical work at the pump station. You can expect:

- Intermittent single-lane closures

- Installing temporary electrical equipment behind the station to supply power to the pump station during construction

[HDD staging area on 164th Place Southeast and Vasa Park/Sunset Pump Station](#)

Work hours: weekdays and weekends 7 a.m. to 7 p.m.

Crews are continuing to prepare for pipe installation using horizontal directional drilling (HDD). For more information about HDD activities and timing, see page two of our [FAQ document](#) on our website. You can expect:

- To see drill rigs onsite near 164th Pl. S.E. and in Vasa Park. Crews will use these drill rigs to excavate around the launch pit and drill the pilot bore.
- Crews continuing to drill the pilot bore, which began last week. This creates an underground pathway through which the pipe will be pulled.
- A generator to run during work hours at the project staging area on 164th Pl. S.E. to dewater. Dewatering removes underground water by pumping it out of a set work area to allow for underground construction.
- Continued construction at Sunset Pump Station as crews install a retaining wall and electrical equipment

What to expect throughout construction:

- Increased noise during work hours
- The fused pipe to float on Lake Sammamish until it is pulled through the underground pathway on Southeast 38th Street in February 2018. For more information, see our [boater flier](#) on our website.
- Truck traffic and traffic impacts on West Lake Sammamish Parkway Southeast and 164th Pl. S.E. during working hours
- Intermittent single-lane closures on West Lake Sammamish Parkway Southeast near the Vasa Park Resort and the Sunset Pump Station for delivery of equipment
- Signs and flaggers to direct traffic around work or to detour routes
- Equipment, dust, and vibrations close to the work areas
- Temporary roadway patches so that crews can re-open affected lanes to traffic when they are not working

The schedule and duration for construction is tentative and is subject to change as work progresses. We will continue to provide email notices with updates on timing of specific construction activities.

For more information

- Visit www.kingcounty.gov/sunsetheathfield
- Call the project hotline at **206-296-7800**
- Email De'Sean Quinn at desean.quinn@kingcounty.gov

**Alternative Formats Available
206-477-5371 TTY Relay: 711**